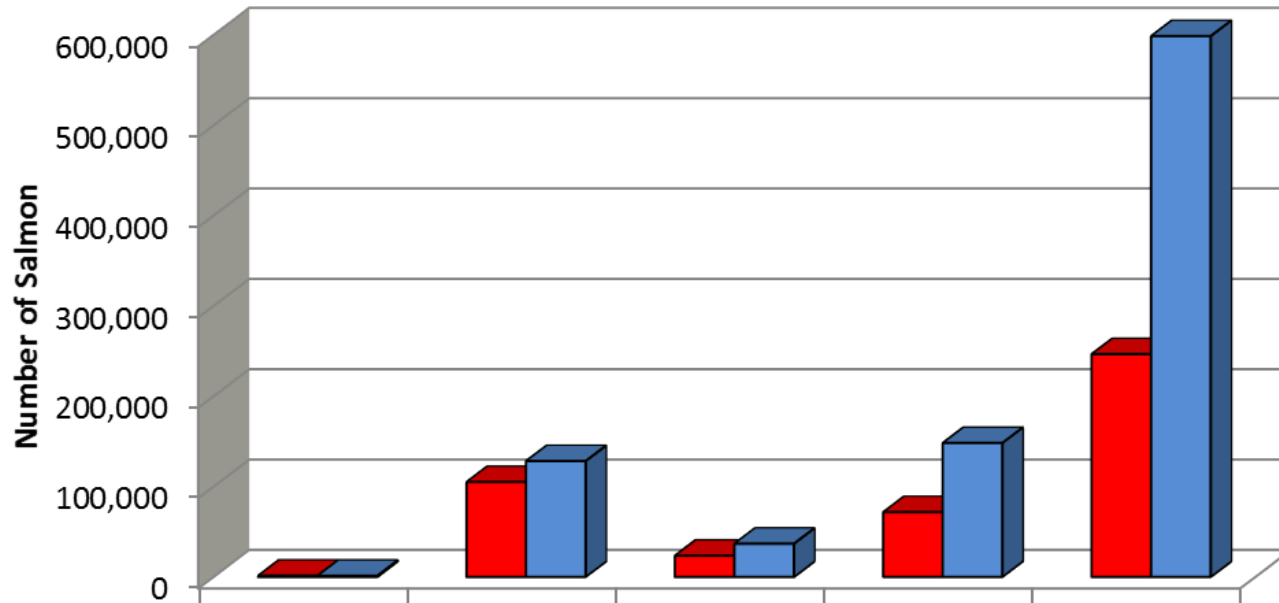


District 11 Drift Gillnet Fishery Taku Inlet, Stephens Passage, and Port Snettisham 2019 Management Summary



Scott Forbes
Gillnet Task Force Meeting
December 4, 2019
Sitka, AK

2019 District 11 Gillnet Harvest and 10-year Average



| | Chinook | sockeye | coho | pink | chum |
|--------------------|---------|---------|--------|---------|---------|
| ■ 2019 | 1,358 | 105,026 | 23,473 | 71,724 | 246,600 |
| ■ 10-year Average* | 1,311 | 128,236 | 36,770 | 148,253 | 598,672 |

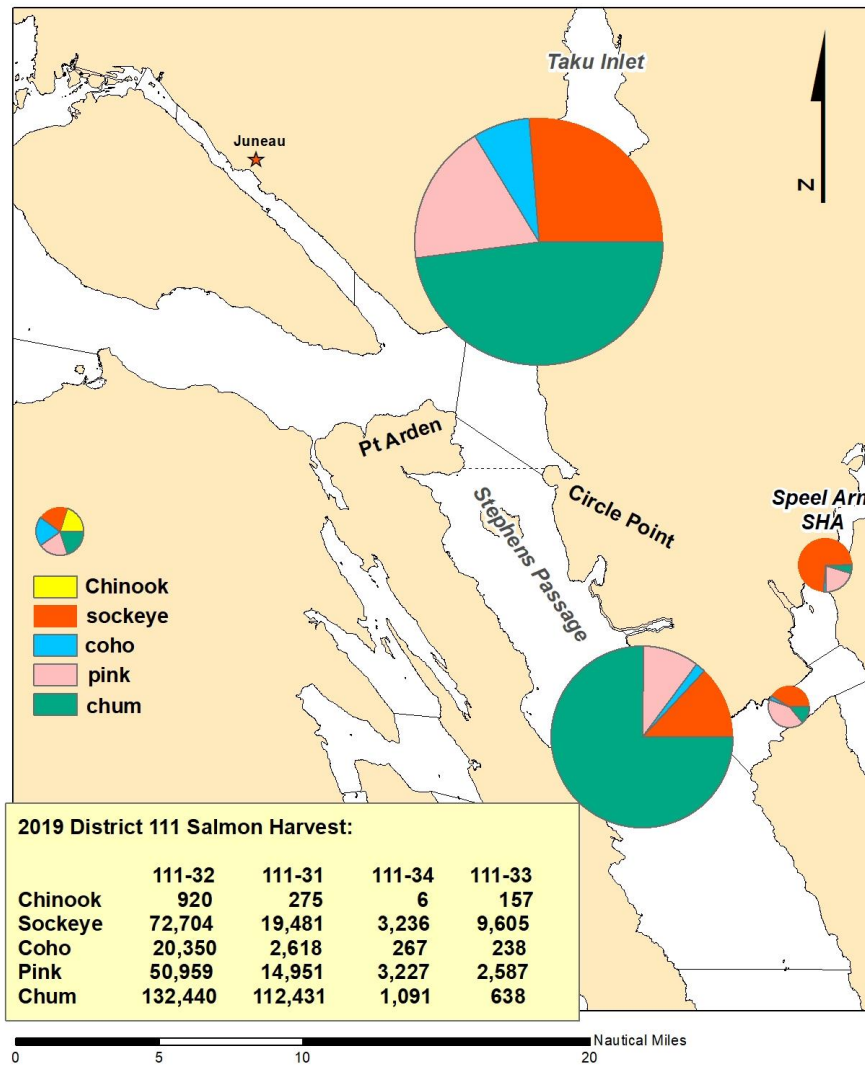
*from SW25-42

2019 District 11 Common Property Gillnet Weekly Time, Effort, and Harvest

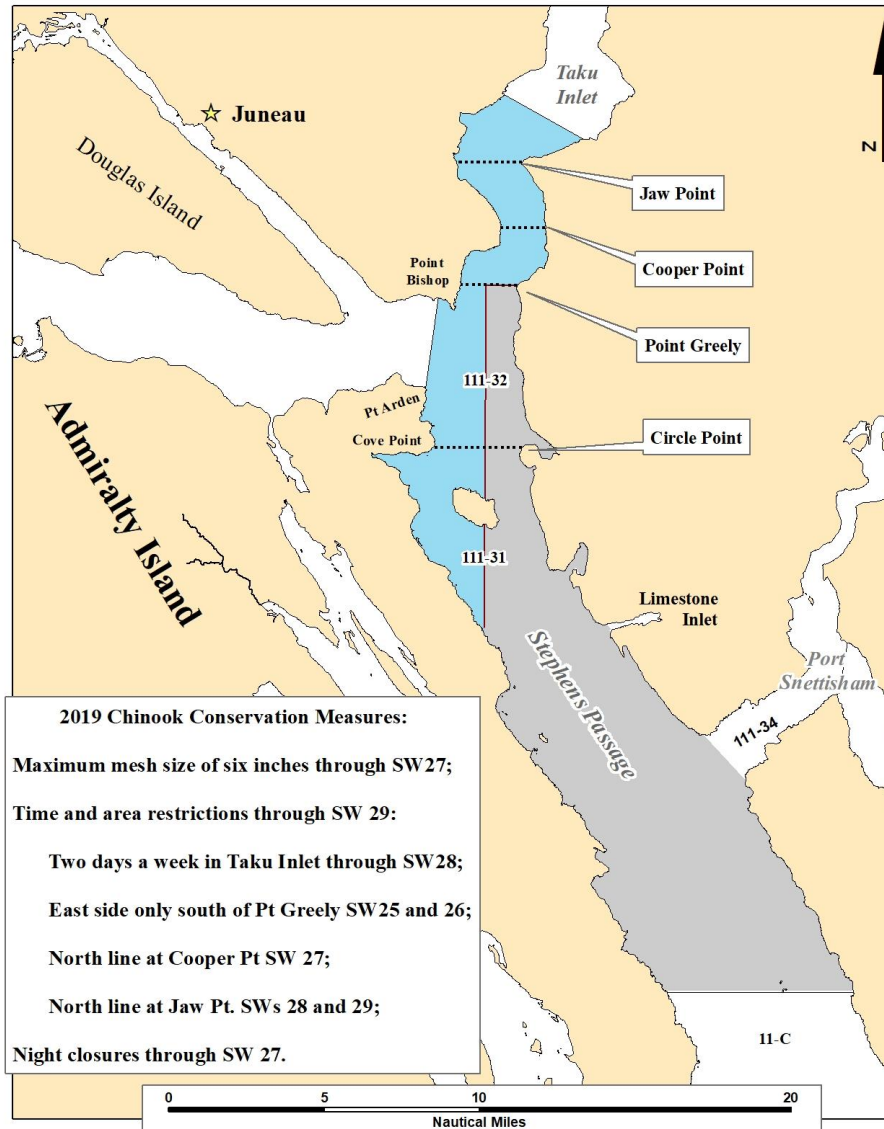
| | Stat Week | Days Open | Boats | Boat Days | Chinook | Sockeye | Coho | Pink | Chum |
|--------------------|-----------|---------------|-------|-----------|---------|---------|---------|---------|--------|
| Sockeye Management | 25 | 2 | 35 | 70 | 83 | 191 | 1 | 2 | 628 |
| | 26 | 2 | 41 | 82 | 133 | 988 | 6 | 102 | 2,502 |
| | 27 | 2 | 59 | 118 | 304 | 2,363 | 39 | 2,328 | 17,705 |
| | 28 | 3 | 99 | 297 | 272 | 7,914 | 75 | 20,125 | 46,322 |
| | 29 | 4 | 87 | 348 | 144 | 17,694 | 155 | 17,752 | 84,049 |
| | 30 | 4 | 96 | 384 | 117 | 27,574 | 637 | 10,133 | 66,058 |
| | 31 | 4 | 108 | 432 | 92 | 21,400 | 1,900 | 7,407 | 22,397 |
| | 32 | 5 | 63 | 303 | 40 | 11,303 | 1,146 | 7,289 | 4,126 |
| | 33 | 4 | 30 | 124 | 104 | 9,454 | 1,250 | 5,168 | 1,382 |
| | 34 | 3 | 27 | 122 | 52 | 4,369 | 2,042 | 1,277 | 697 |
| Coho Management | 35 | 2 | 24 | 72 | 5 | 1,586 | 2,594 | 127 | 327 |
| | 36 | 3 | 21 | 67 | 9 | 183 | 2,141 | 14 | 187 |
| | 37 | 4 | 25 | 100 | 2 | 7 | 7,048 | 0 | 149 |
| | 38 | 5 | 26 | 130 | 1 | 0 | 4,041 | 0 | 67 |
| | 39 | 5 | 8 | 40 | 0 | 0 | 264 | 0 | 4 |
| | 40 | 5 | 2 | 10 | 0 | 0 | 134 | 0 | 0 |
| | 41 | 5 | 0 | 0 | 0 | 0 | 0 | 0 | 0 |
| | 42 | season closed | | | | | | | |
| Fishery Total | 62 | 187 | 2,699 | 1,358 | 105,026 | 23,473 | 71,724 | 246,600 | |
| 2009-2018 Average* | 51 | 198 | 3,190 | 1,311 | 128,236 | 36,770 | 148,253 | 598,672 | |
| 2019 % Average | 122% | 94% | 85% | 104% | 82% | 64% | 48% | 41% | |

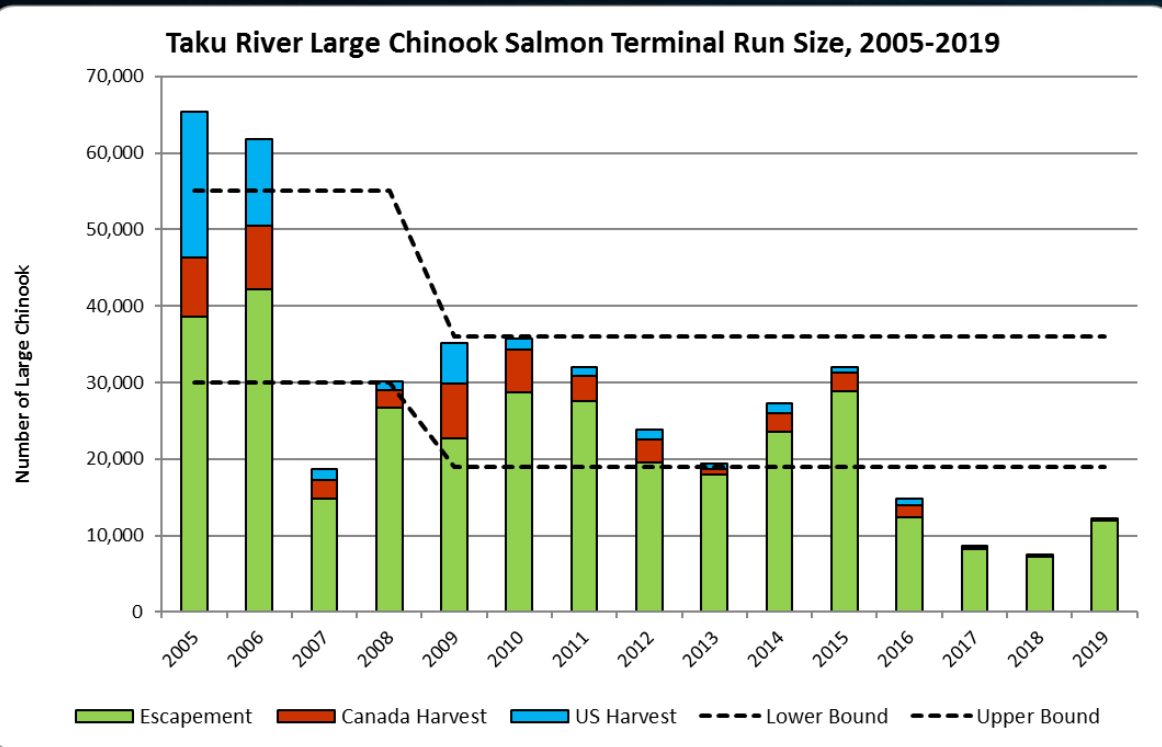
*All averages from SW 25-42

2019 District 111 Common Property Drift Gillnet Harvest by Species



2019 District 111 Taku River Chinook Salmon Conservation





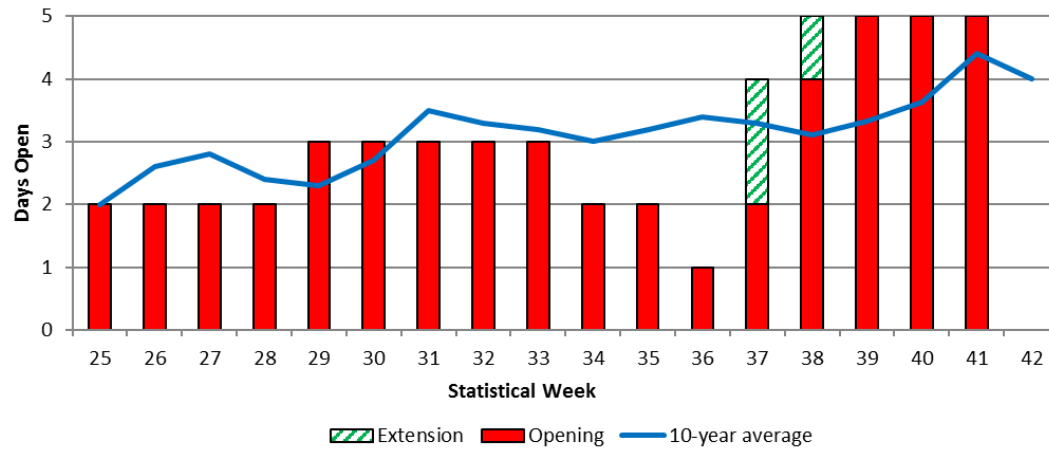
2019 Taku River Large Chinook

- Preseason forecast: 9,050 fish
- Escapement estimate: 12,000 fish
 - U.S. GSI-based harvest:
 - Gillnet = 124 fish
 - Sport = 94 fish
 - PU = 10 fish
- Canada mortality: 47 fish

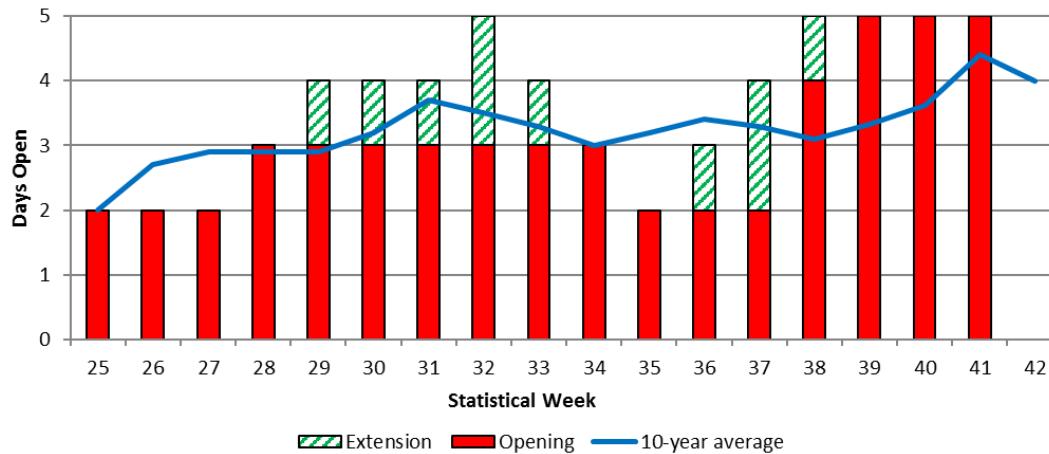


2019 ADF&G Taku River large
Chinook salmon forecast:
xx,xxx fish

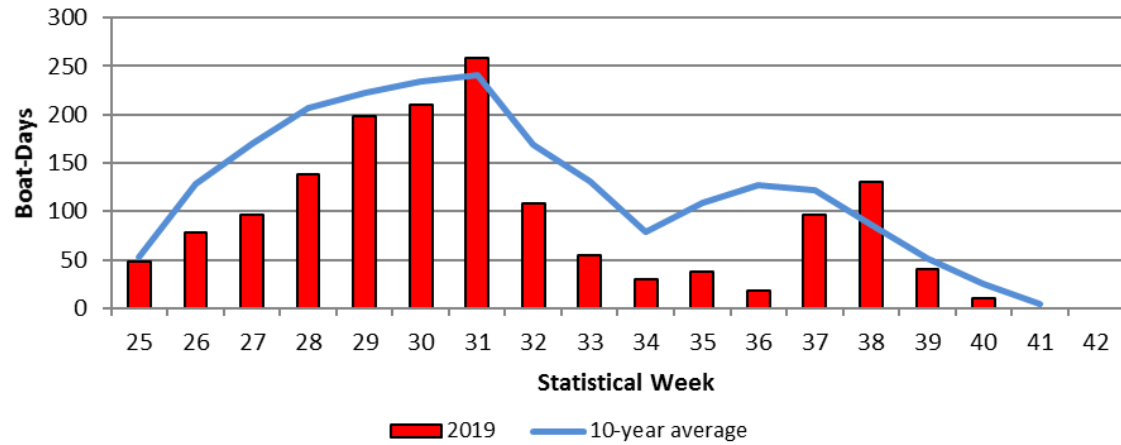
2019 Taku Inlet Weekly Gillnet Days Open



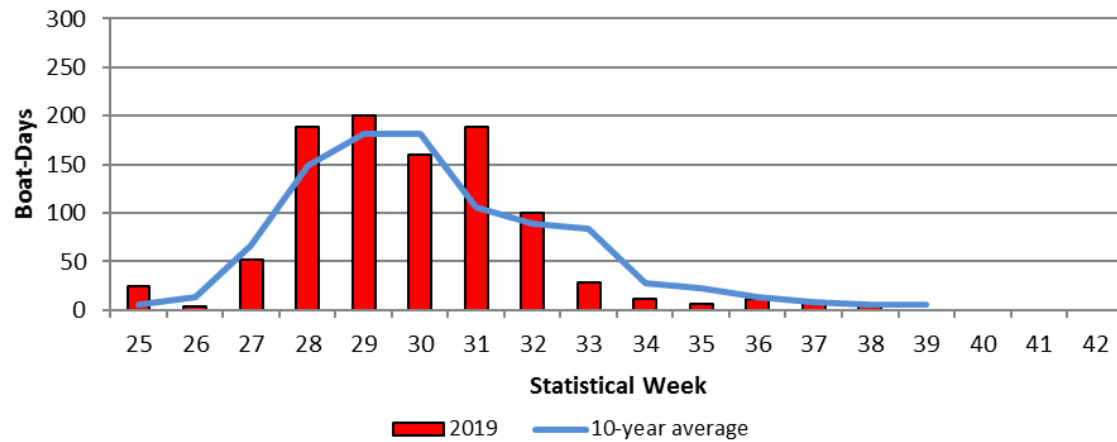
2019 Stephens Passage Weekly Gillnet Days Open

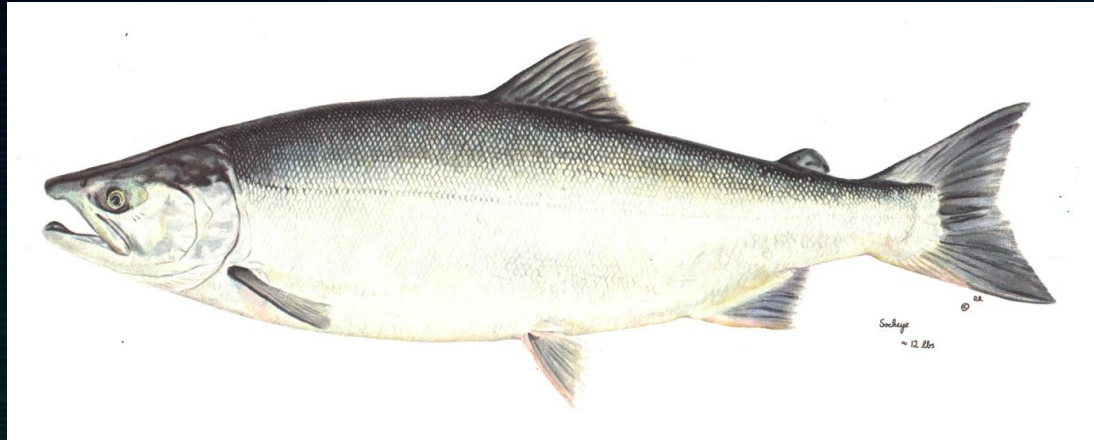


2019 Taku Inlet Weekly Gillnet Boat-Days

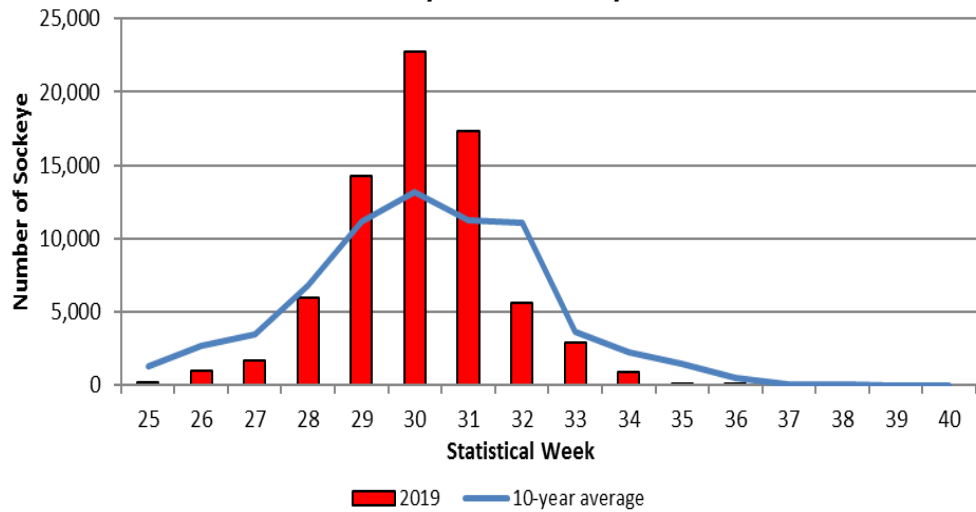


2019 Stephens Passage Weekly Gillnet Boat-Days

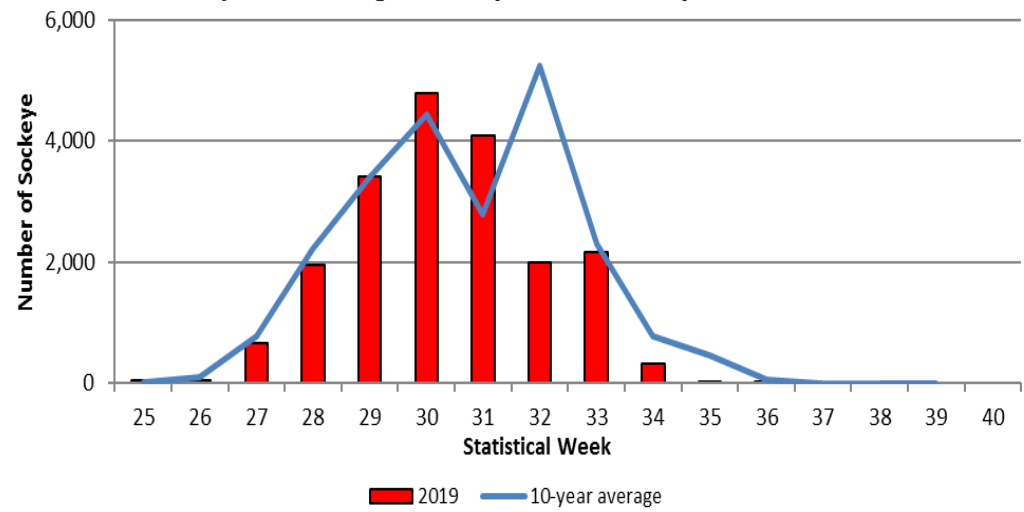




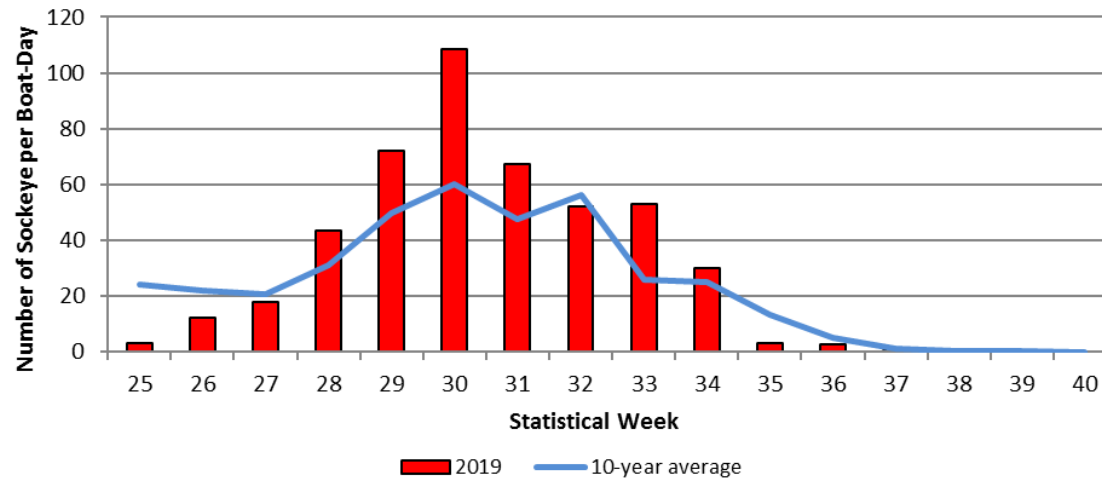
2019 Taku Inlet Weekly Gillnet Sockeye Salmon Harvest



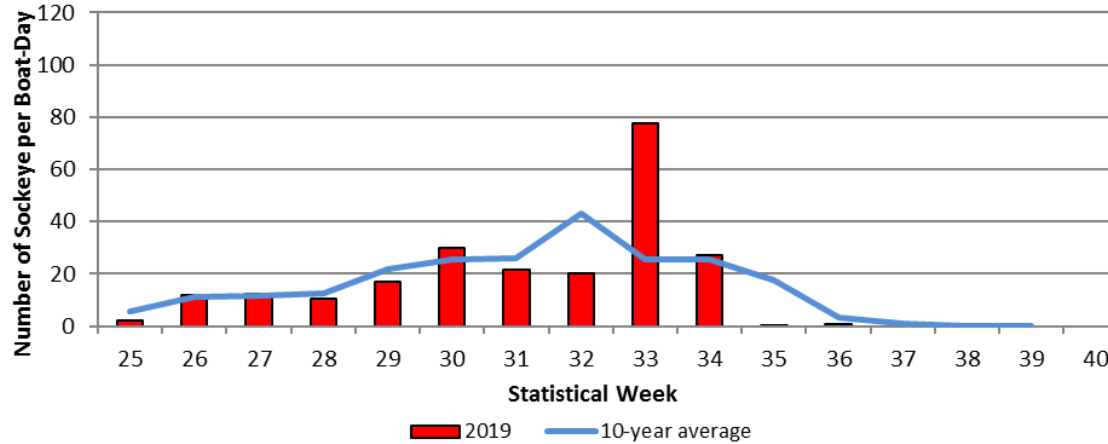
2019 Stephens Passage Weekly Gillnet Sockeye Salmon Harvest



2019 Taku Inlet Weekly Gillnet Sockeye Salmon CPUE

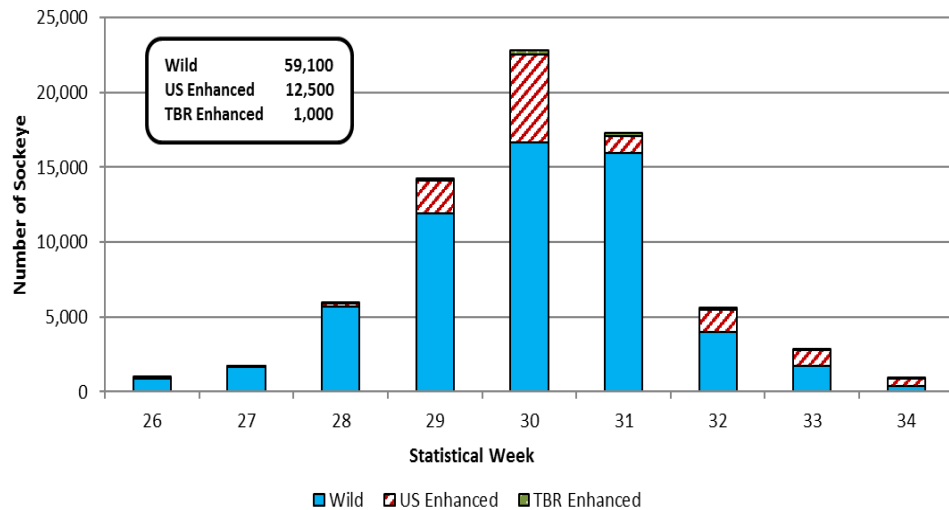


2019 Stephens Passage Weekly Gillnet Sockeye Salmon CPUE

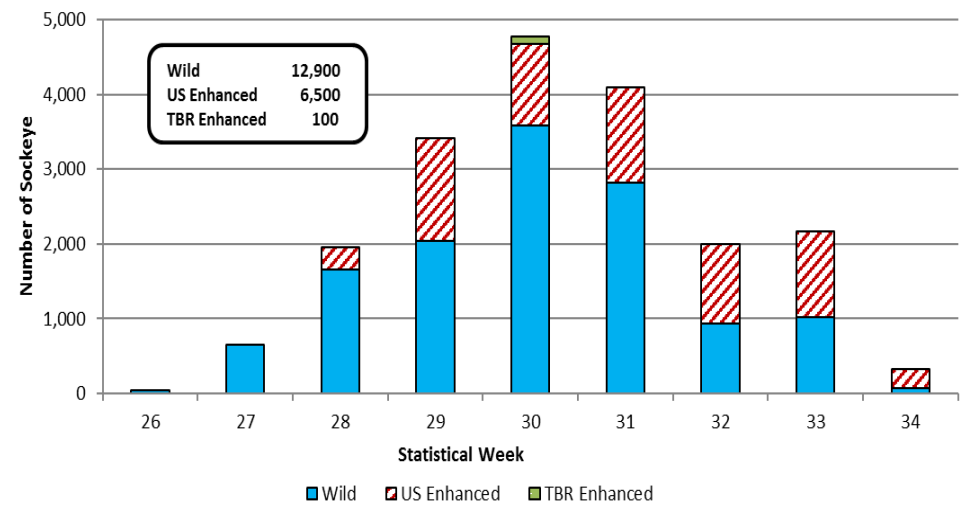


Inseason Otolith Sampling Results

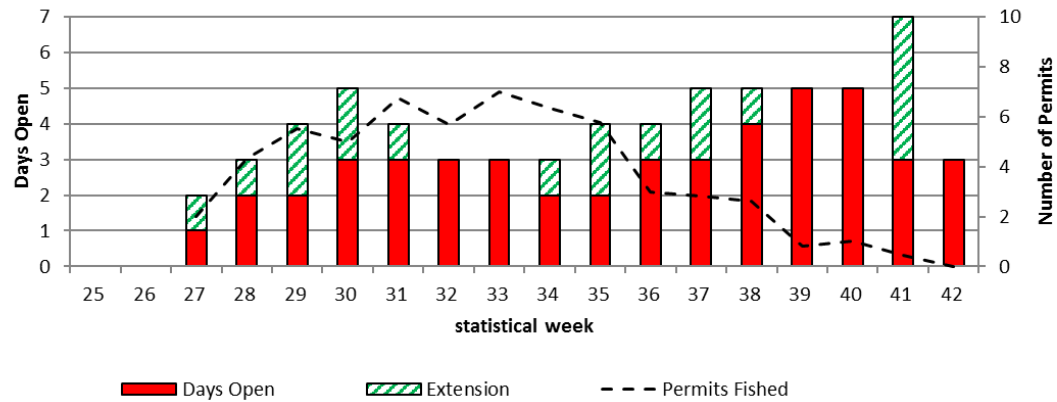
2019 Taku Inlet Weekly Gillnet Sockeye Salmon Harvest Composition



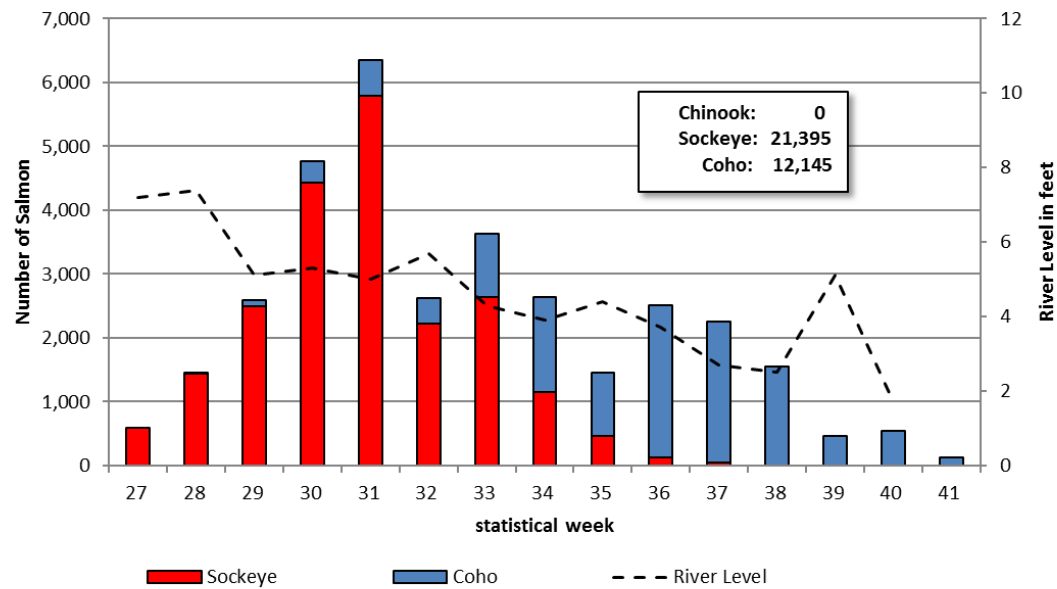
2019 Stephens Passage Weekly Gillnet Sockeye Salmon Harvest Composition



2019 Canada Taku River Weekly Commercial Gillnet Time and Effort



2019 Canada Taku River Weekly Commercial Fishery Harvest



Preliminary 2019 Taku River Sockeye Salmon Run Reconstruction

Inriver Run Size: 98,200 fish

Terminal Run Size: 142,200 fish (includes 3,000 enhanced fish)

Escapement: 76,700 fish

U.S. Harvest: 44,000 fish (includes PU fishery)

Canada Harvest: 21,500 fish (includes Aboriginal fishery)

TAC: 83,200 fish

Harvest shares (1 – 5,000 enhanced fish): 80% U.S., 20% Canada

U.S. AC: 66,600 fish (harvested 66%)

Canada AC: 16,600 fish (harvested 129%)

Preliminary 2019 Sockeye Salmon Escapements

Taku River: 76,700 fish

2019 Interim Spawning Objective Range: 55,000 – 62,000 fish

King Salmon Lake: 4,300 fish (2,700 average)

Kuthai Lake: 600 fish (800 average)

Little Trapper Lake: 6,400 fish (7,000 average)

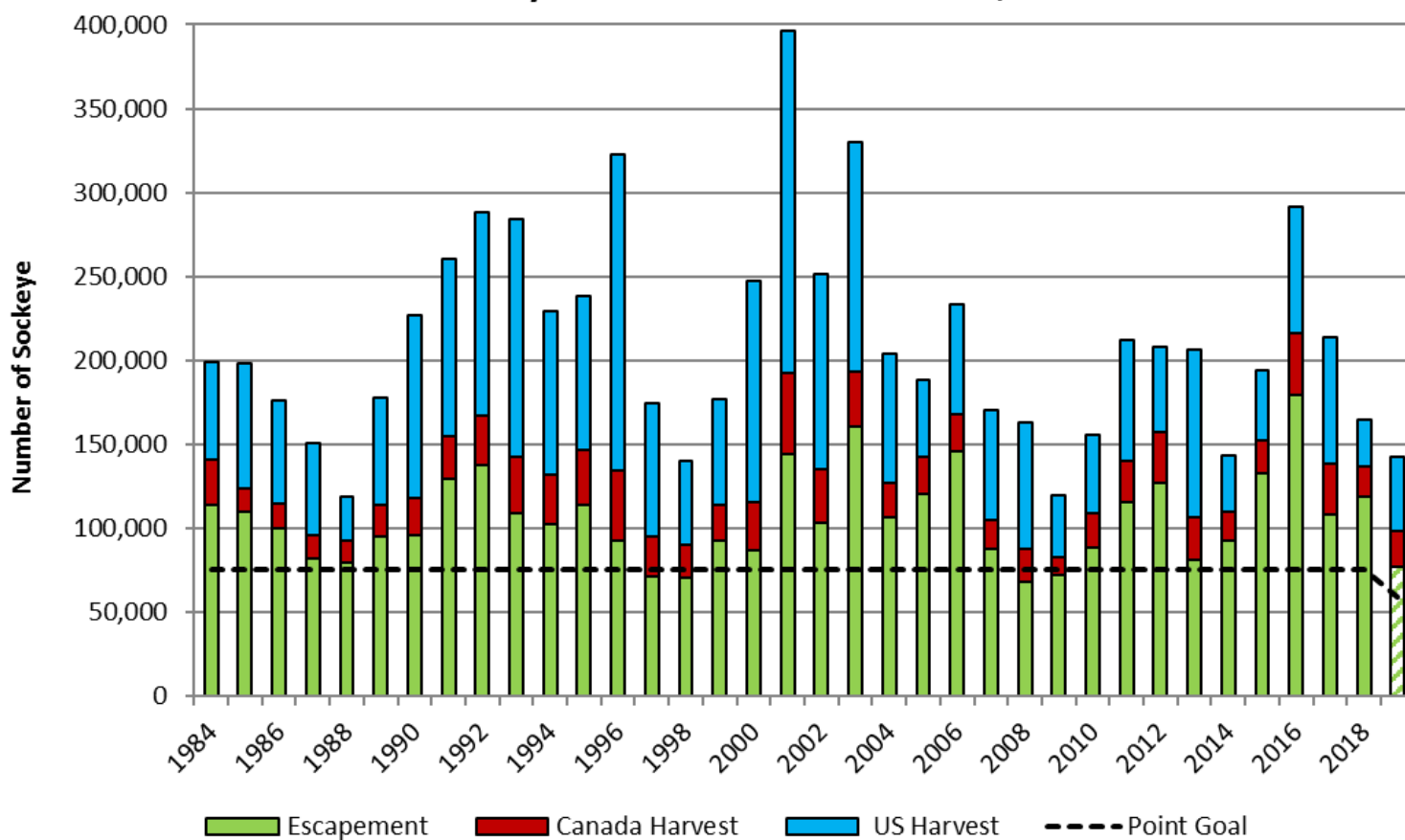
Tatsamenie Lake: 3,700 fish (10,800 average)

Speel Lake: 6,440 fish (4,900 average)

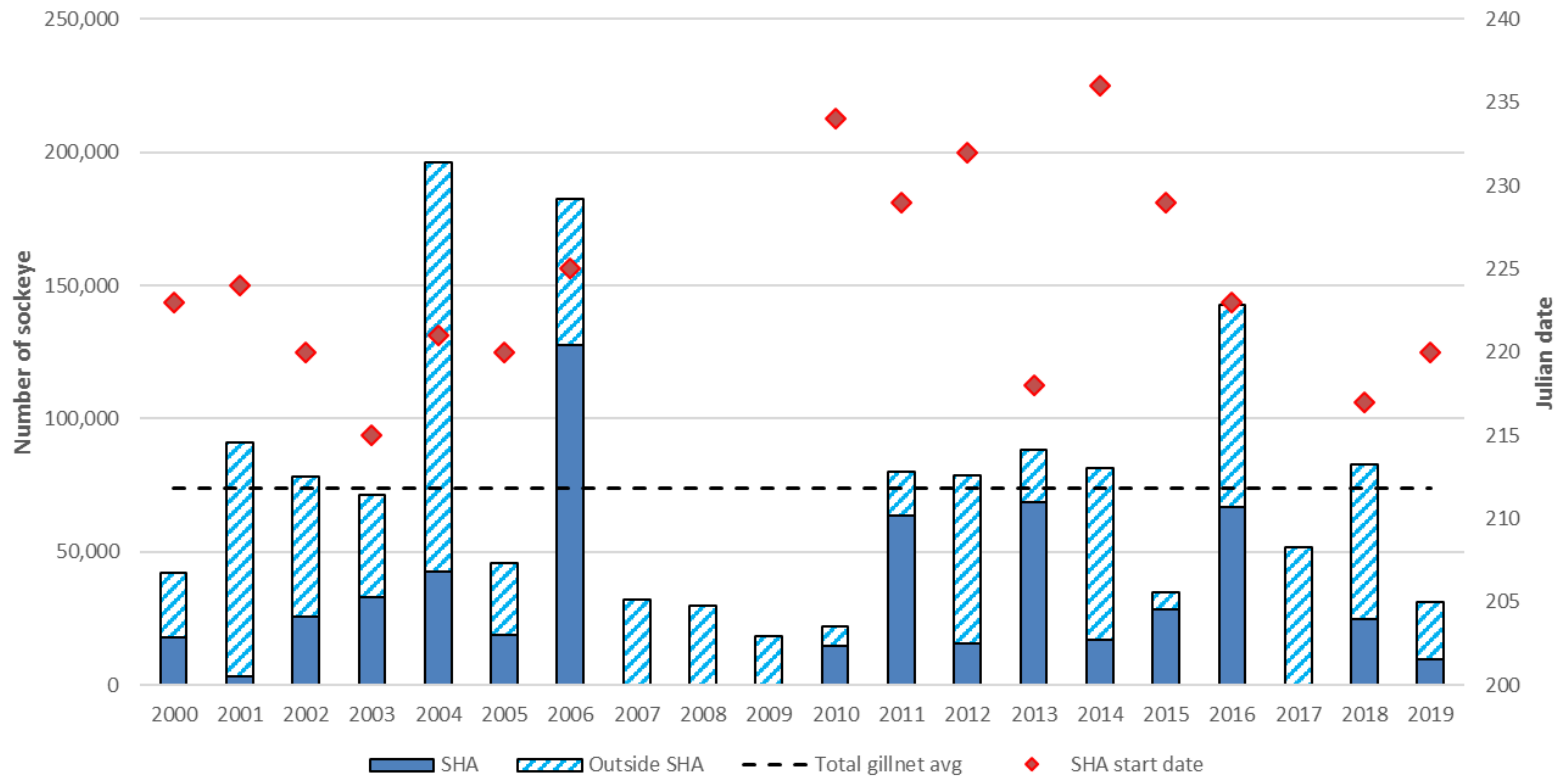
SEG Range: 4,000 – 9,000 fish

Crescent Lake: Fish observed on aerial surveys

Taku River Sockeye Salmon Terminal Run Size, 1984-2019

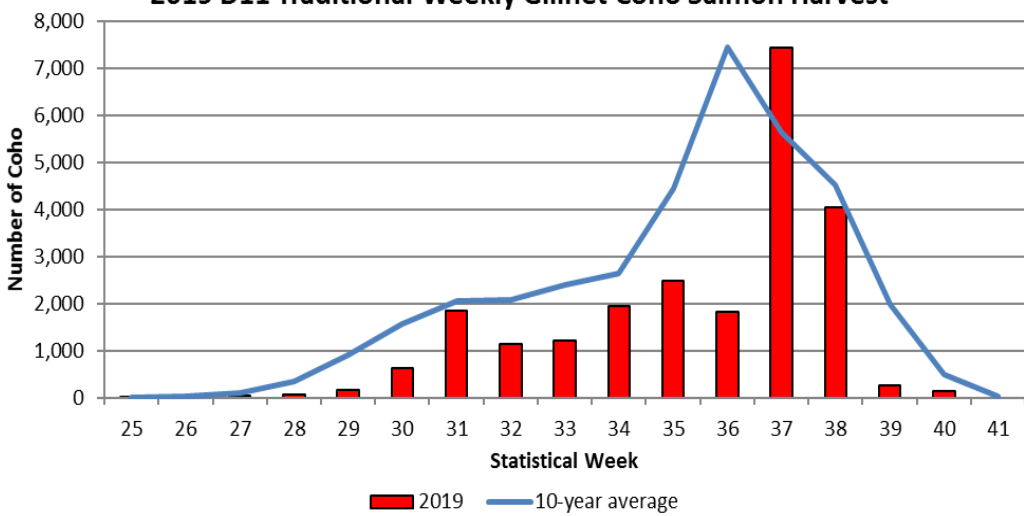


D11 Gillnet Harvest of Snettisham Hatchery Sockeye and Speel Arm SHA Start Date, 2000-2019

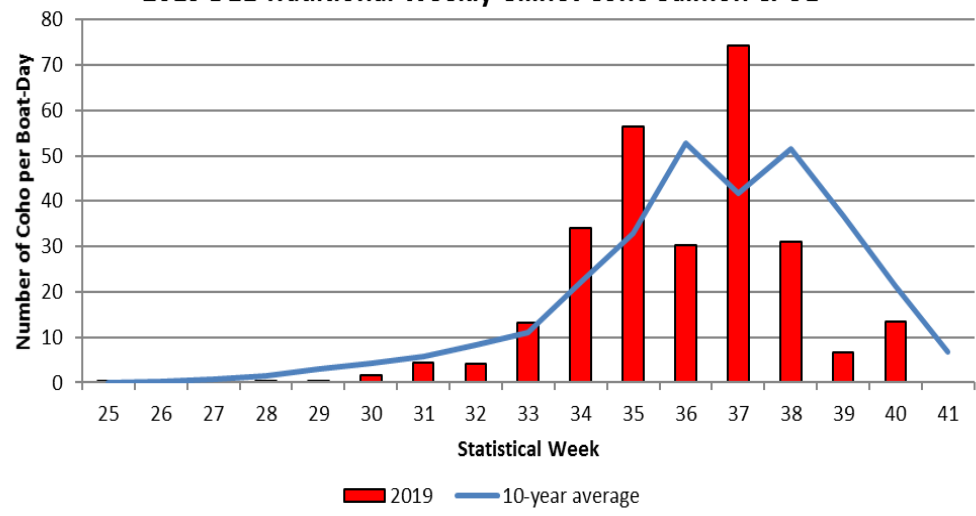




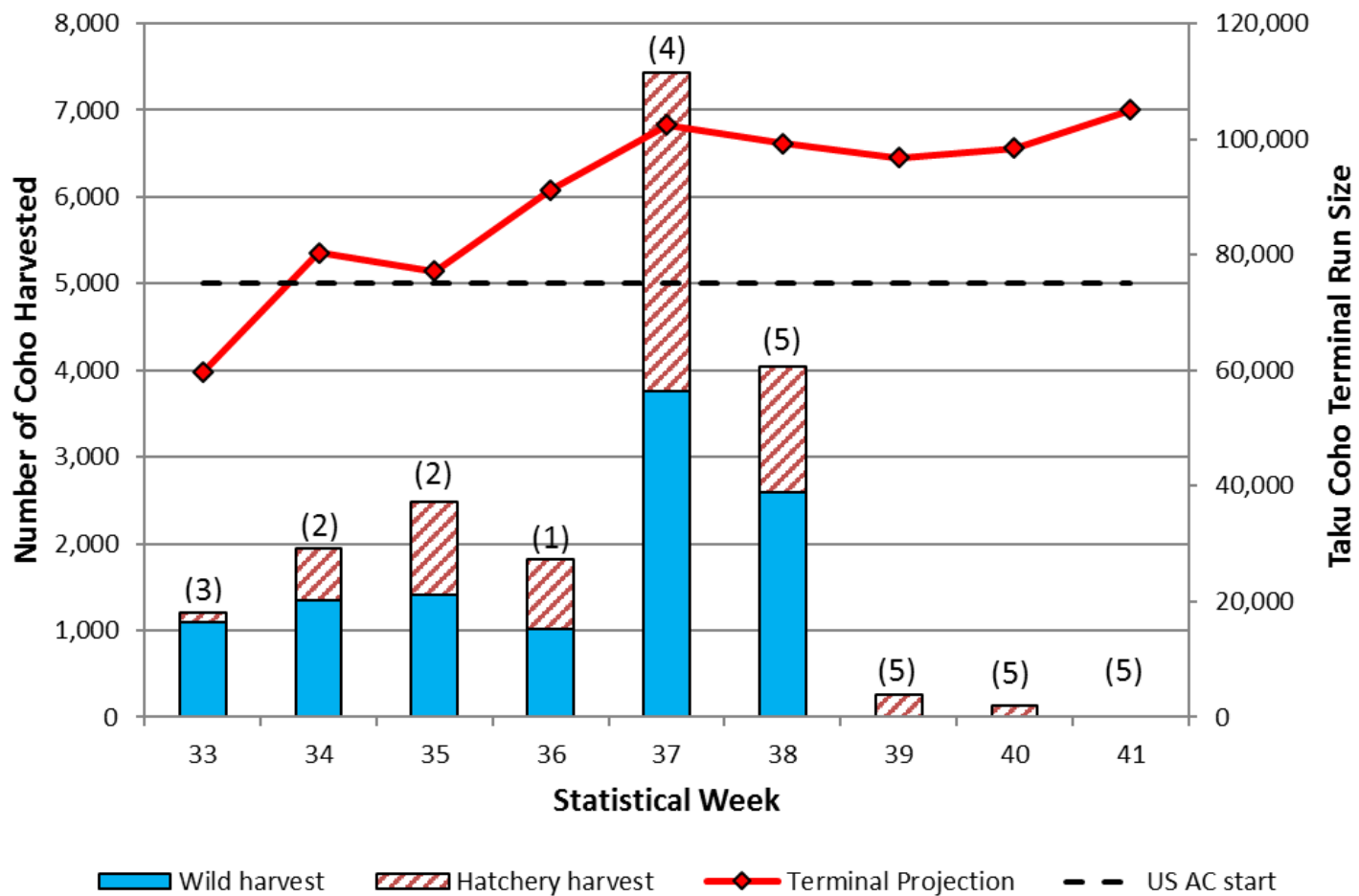
2019 D11 Traditional Weekly Gillnet Coho Salmon Harvest



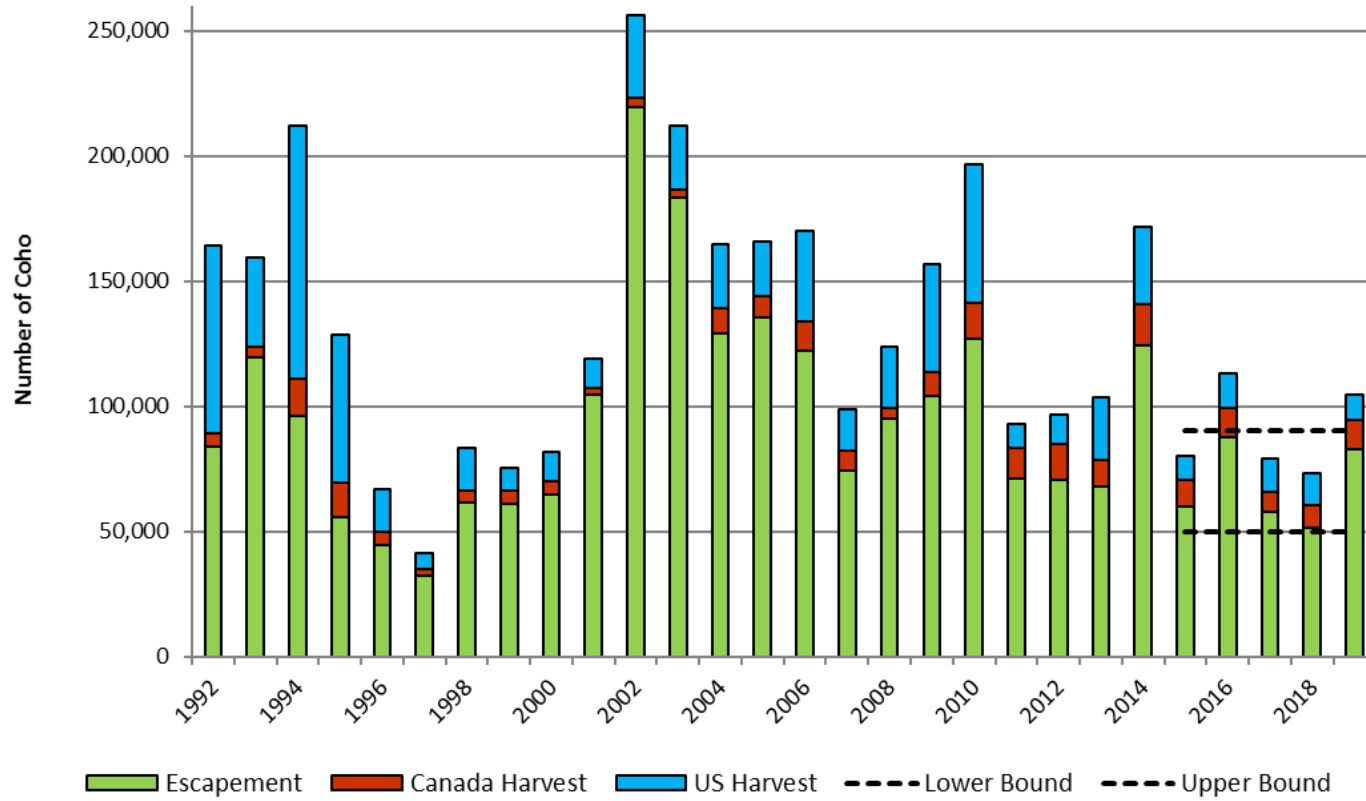
2019 D11 Traditional Weekly Gillnet Coho Salmon CPUE



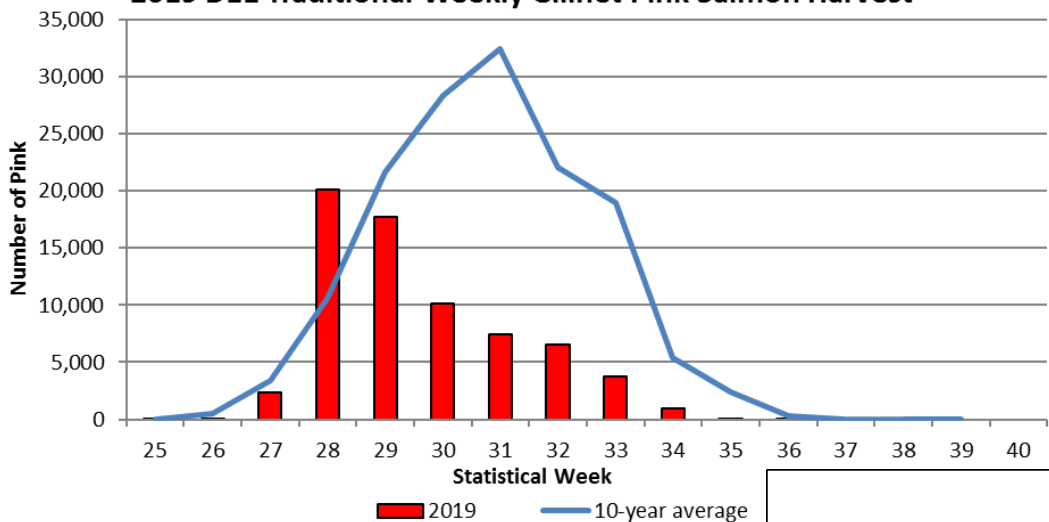
2019 D11 Traditional Weekly Gillnet Coho Harvest Composition and Taku Run Size



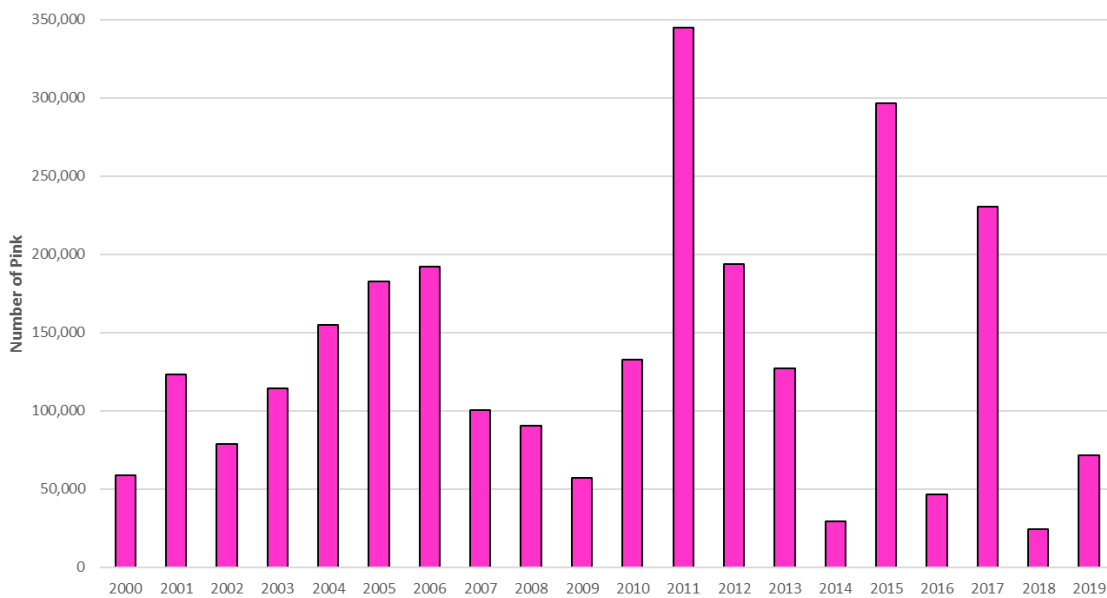
Taku River Coho Salmon Terminal Run Size, 1992-2019



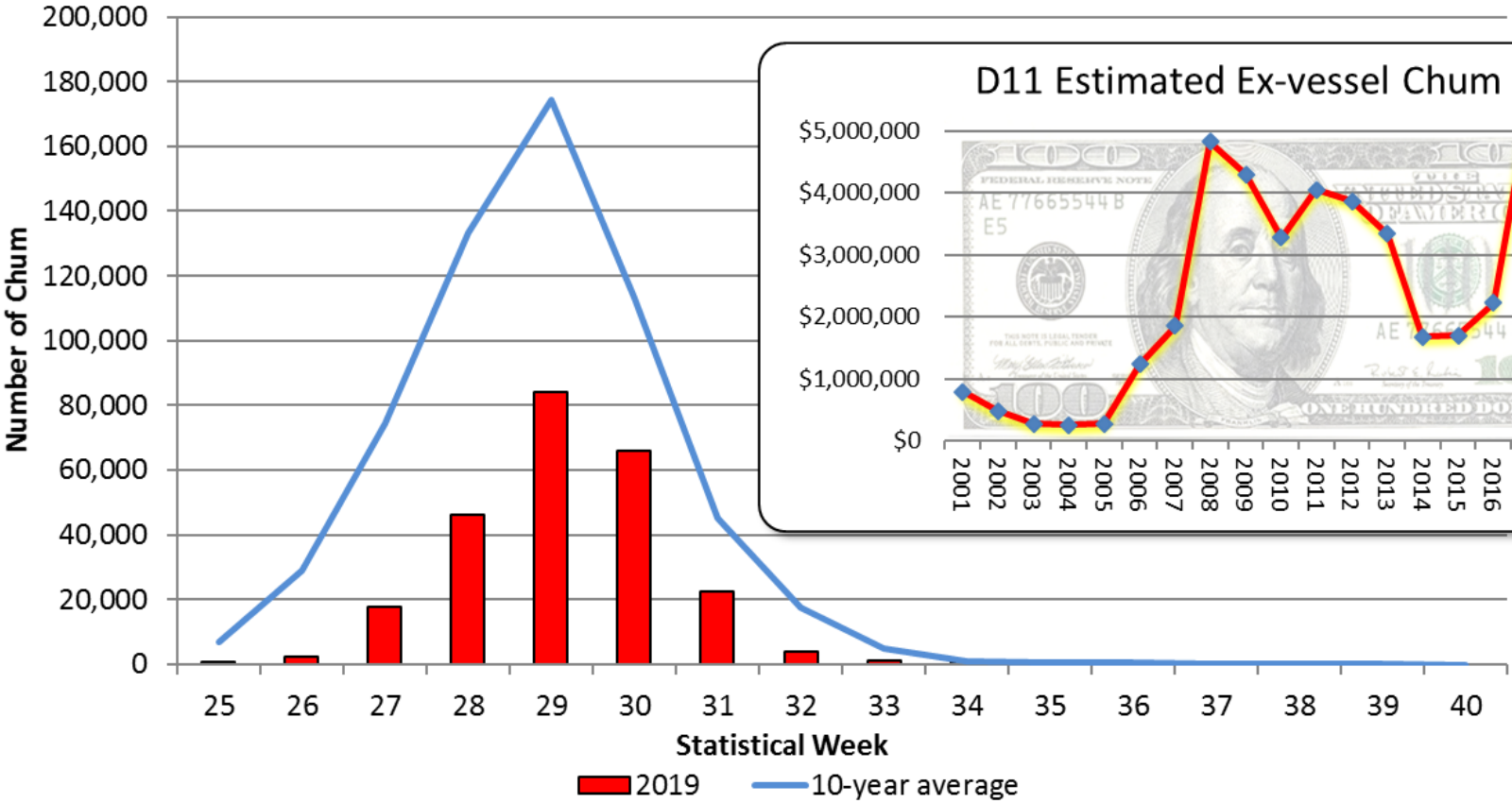
2019 D11 Traditional Weekly Gillnet Pink Salmon Harvest



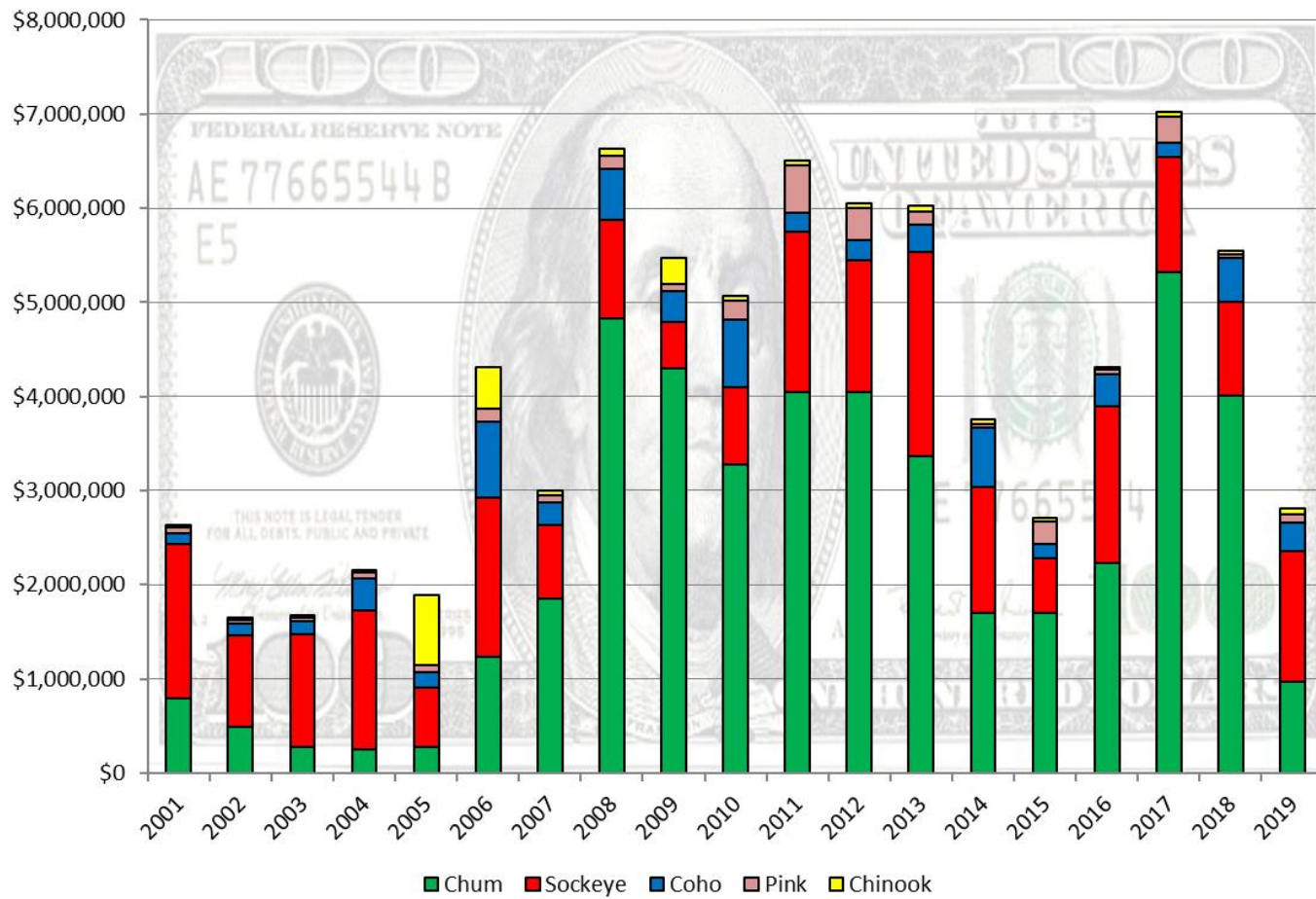
District 11 Gillnet Pink Salmon Harvest, 2000-2019



2019 D11 Weekly Gillnet Chum Salmon Harvest



D11 Gillnet Estimated Ex-vessel Value by Species, 2001-2019



Thanks to Detlef Buettner for permission to use his fish art.

