

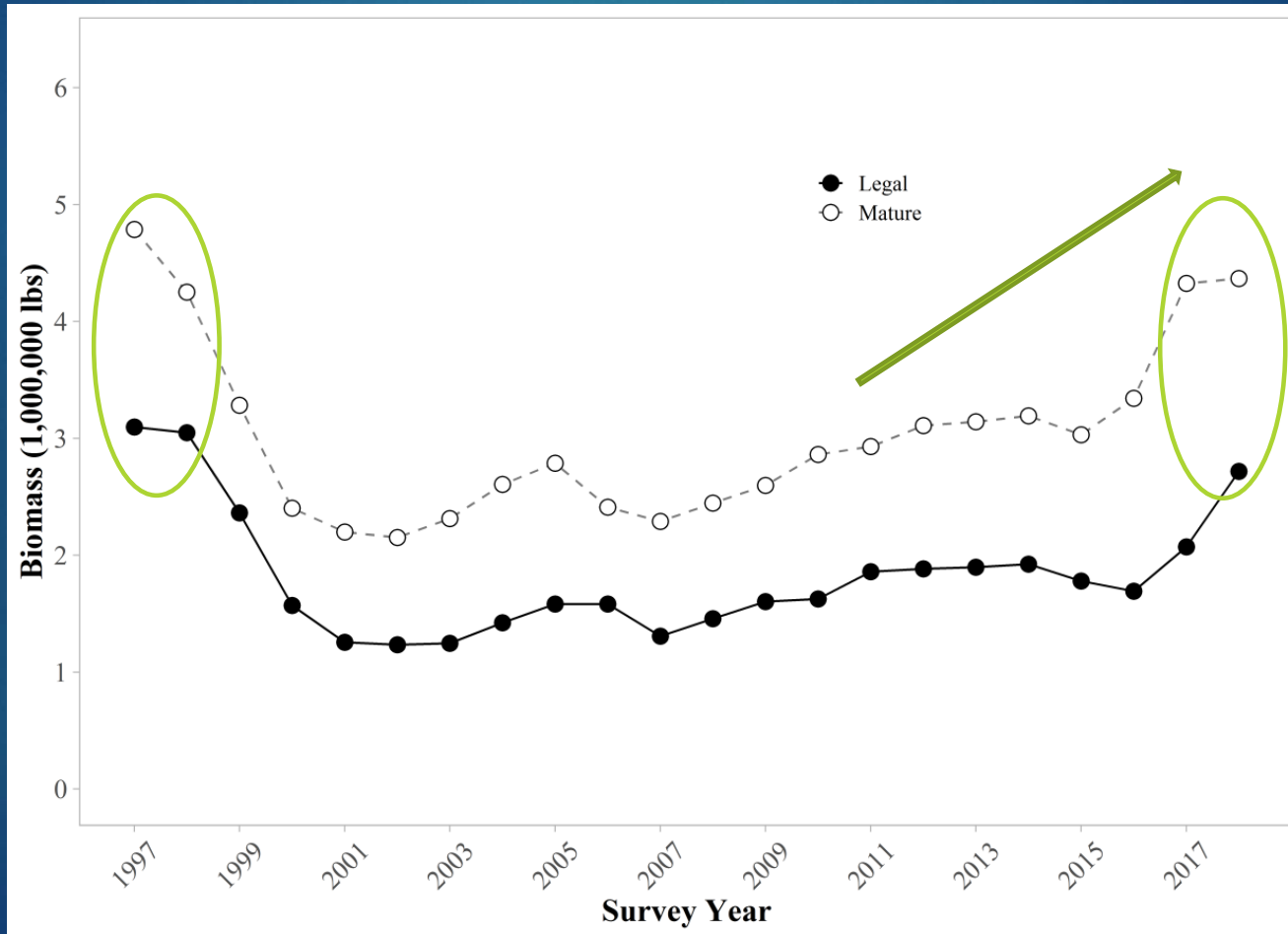


# 2018 Tanner Crab Survey Results



KING AND TANNER TASK FORCE MEETING  
12.13.2018

# Trends in Male Tanner crab: Mature and Legal Biomass Estimates





SEAK Mature  
Tanner Crab  
Biomass:

**2017/2018**

Estimate: 6.64 million pounds

**2018/2019 (current season):**

Estimate: 6.62 million pounds

# Tanner Crab Harvest Strategy

## 5 AAC 35.113

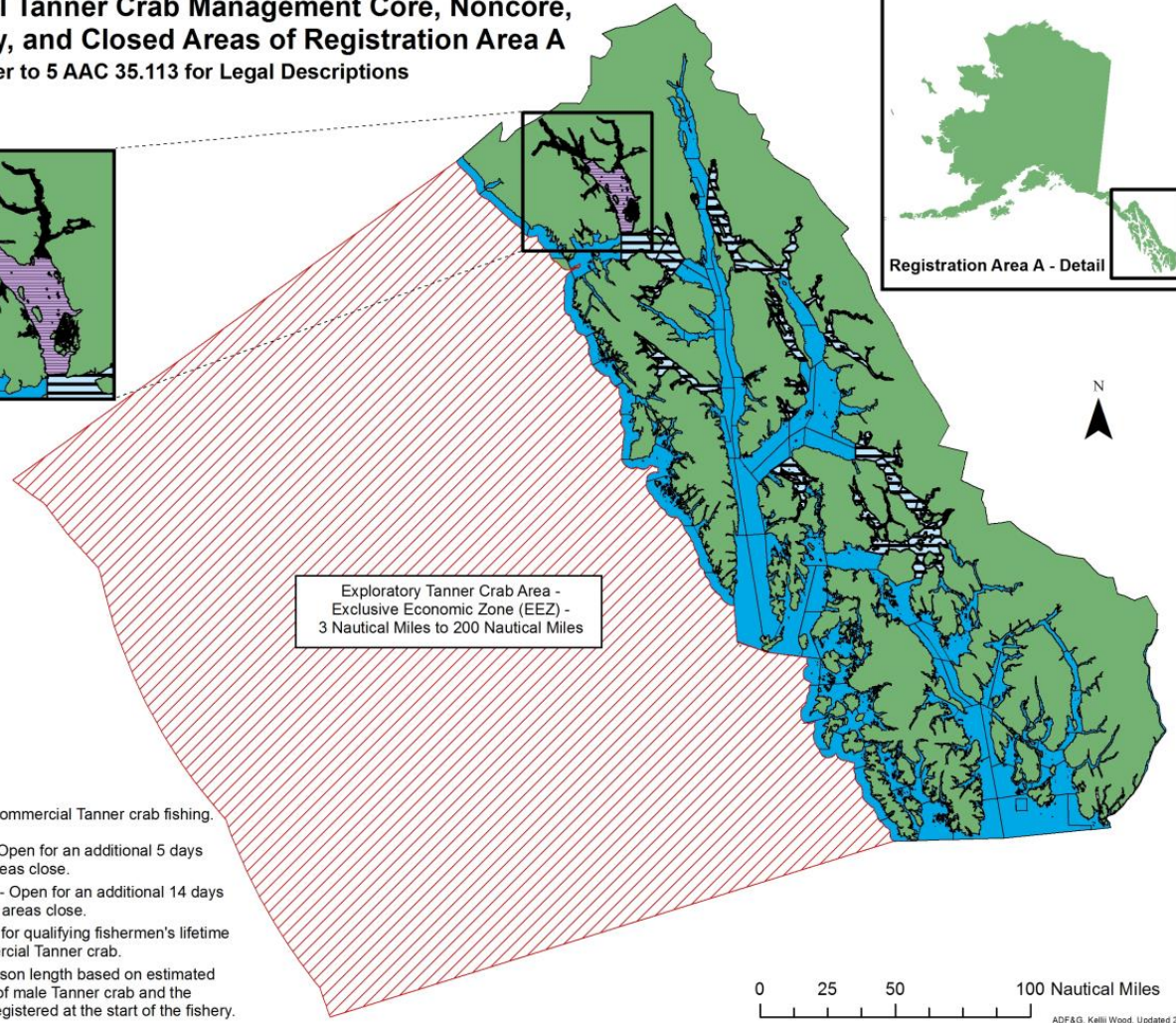
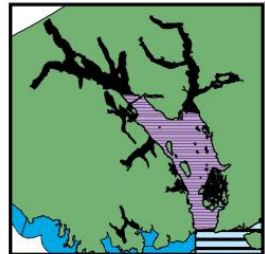
Pots Registered	Additional Fishing Days	Additional Fishing Days
	<i>Mature Biomass is Between 2,300,000 and 5,500,000 lb</i>	<i>Mature Biomass is Greater than 5,500,000 lb</i>
1,600 – 2,399	4 Additional Days	5 Additional Days
2,400 – 3,199	3 Additional Days	4 Additional Days
3,200 – 3,999	2 Additional Days	3 Additional Days
4,000 – 5,599	1 Additional Days	2 Additional Days
5,600 – 7,000	0 Additional Days	1 Additional Days

2018/2019

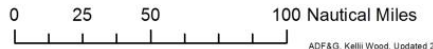
# Core and Non-Core Survey Areas

## Commercial Tanner Crab Management Core, Noncore, Exploratory, and Closed Areas of Registration Area A

Refer to 5 AAC 35.113 for Legal Descriptions



- Legend**
- Areas closed to commercial Tanner crab fishing.
  - Noncore Areas - Open for an additional 5 days after the 'Core' areas close.
  - Exploratory Area - Open for an additional 14 days after the noncore areas close.
  - Core Areas open for qualifying fishermen's lifetime permit for commercial Tanner crab.
  - Core Areas - Season length based on estimated mature biomass of male Tanner crab and the number of pots registered at the start of the fishery.



ADF&G, Kelli Wood, Updated 2018

# Catch Survey Analysis (CSA) Overview



# 2015 CSA Changes:

- Port Camden and Port Frederick removed from survey.
- Stephens Passage removed from Tanner crab survey, but Tanner crab abundance is still assessed through red king crab survey.

## Highlights →

- 6.62 million pounds of mature male crab (>108 mm carapace width).
- 4.12 million pounds of legal male crab (>137 mm carapace width).
- Decrease of 0.84 million pounds of legal male Tanner crab (~26%) from the 2017 estimate.

### Stock Health:

- Poor in One area
- Moderate in FOUR areas.
- Above Average in SIX areas.
- Healthy in ONE area.



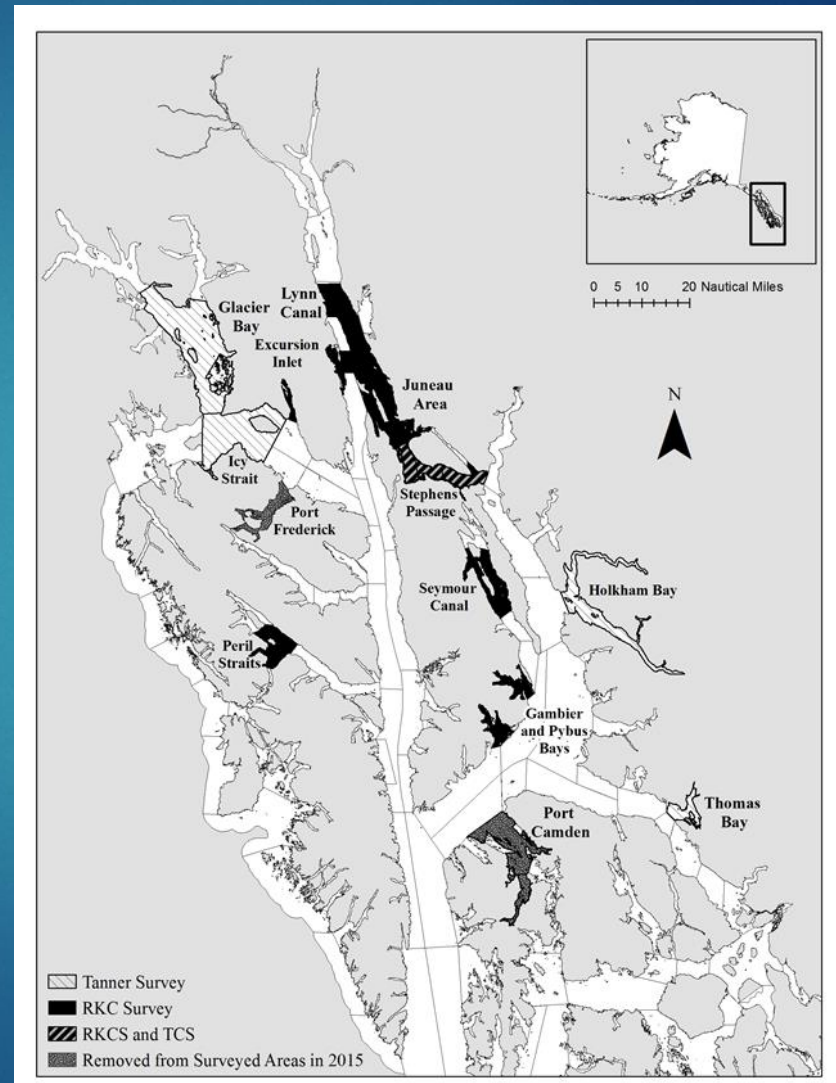
# Survey Areas

## Tanner Crab:

Icy Strait  
Glacier Bay  
Thomas Bay  
Holkham Bay

## Red King Crab:

Stephens Passage  
Seymour Canal  
North Juneau  
Excursion Inlet  
Pybus Bay  
Gambier Bay  
Peril Strait  
Lynn Sisters

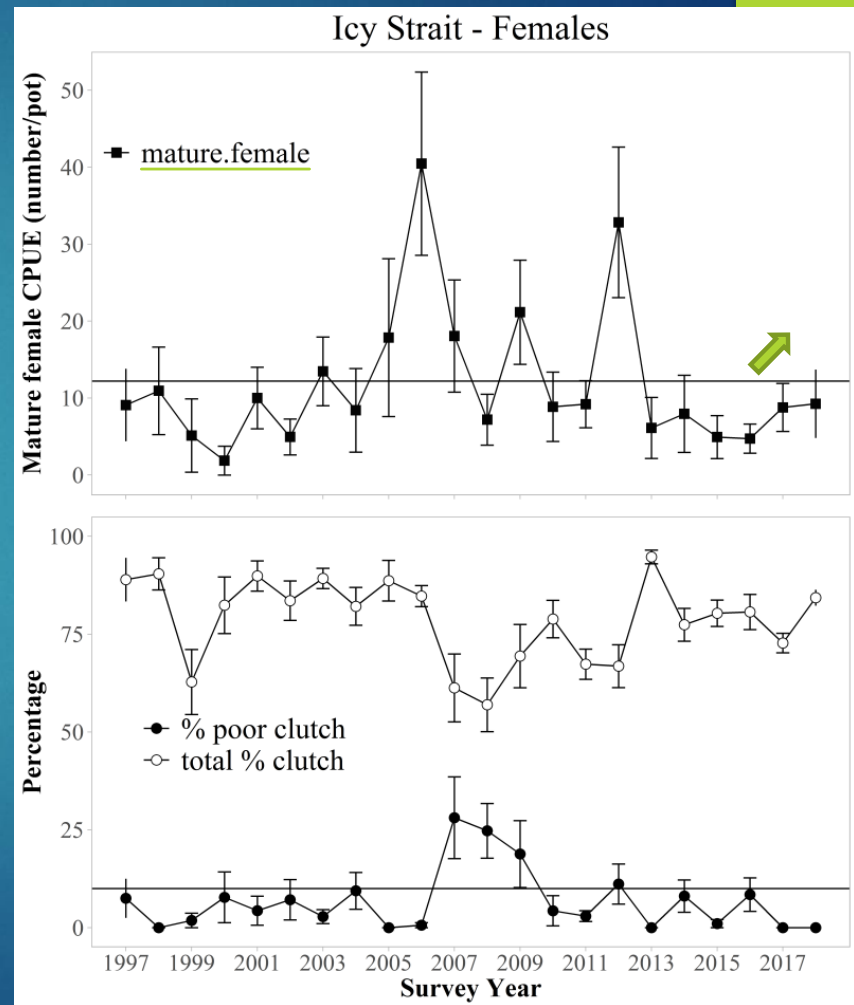
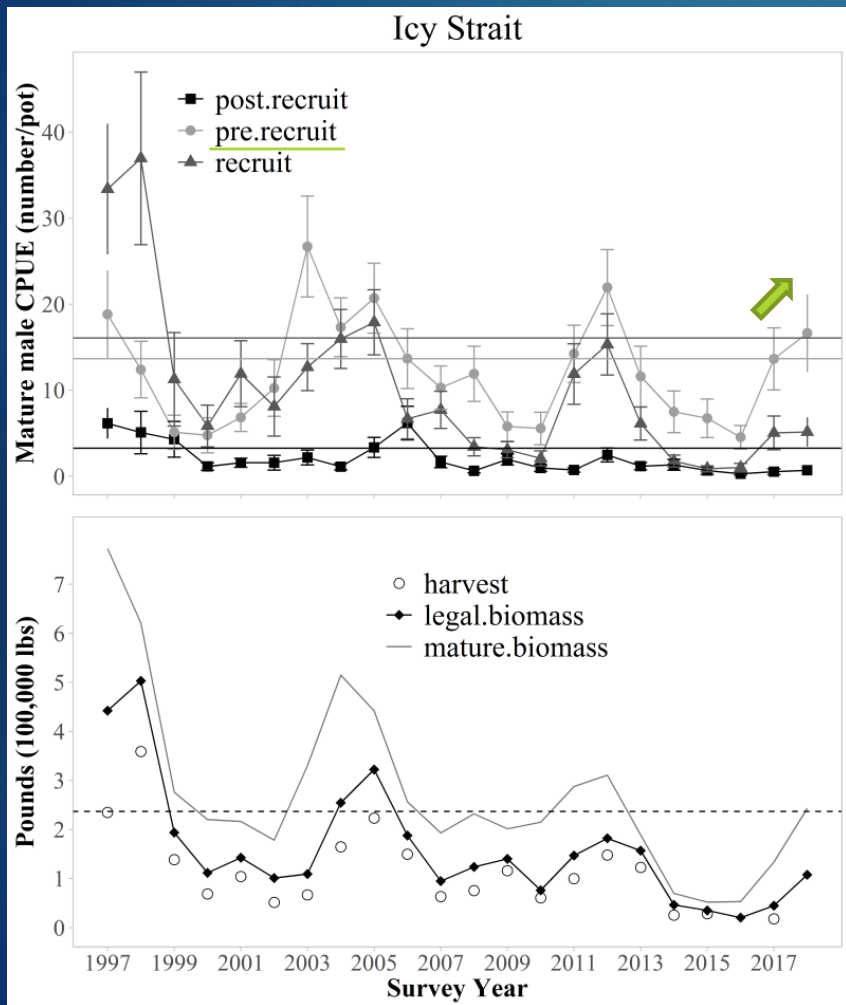


# Bay by Bay Review

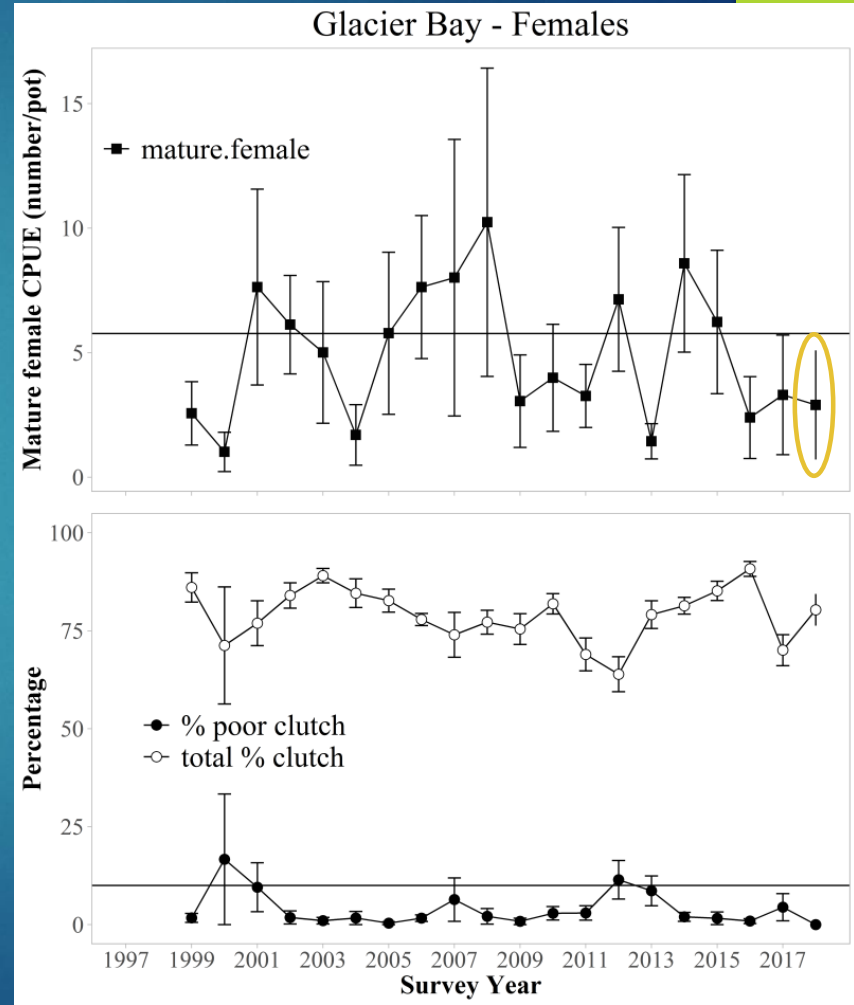
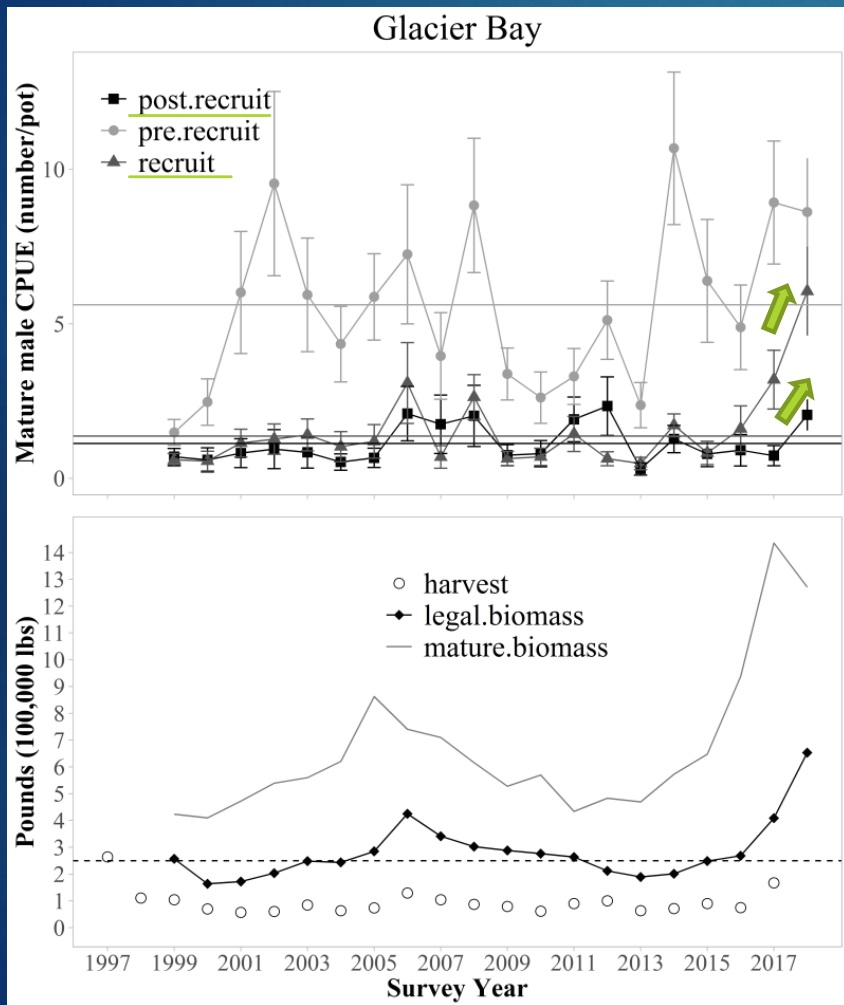
...



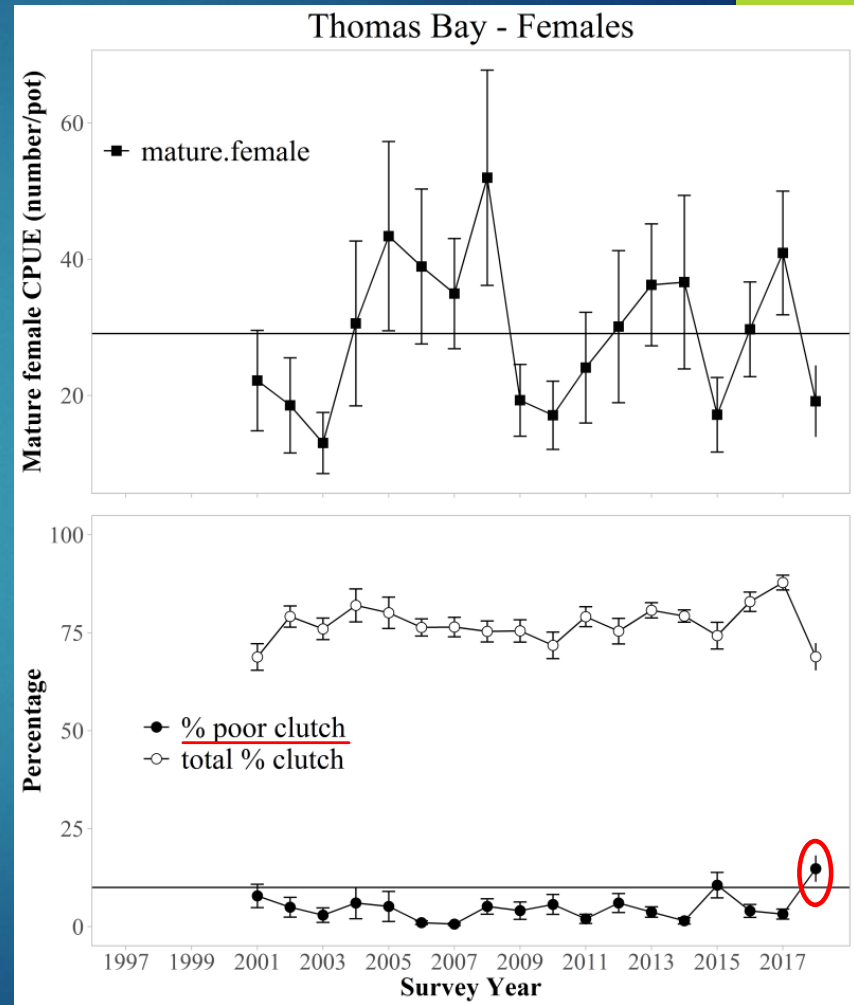
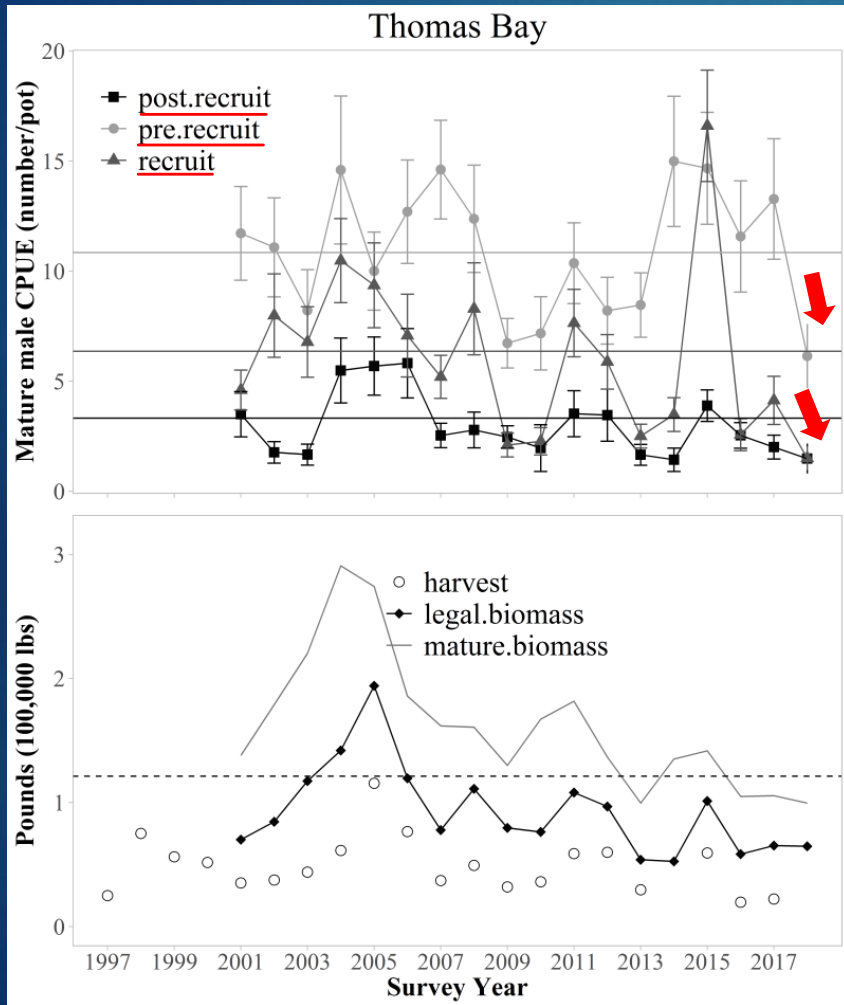
# Icy Strait



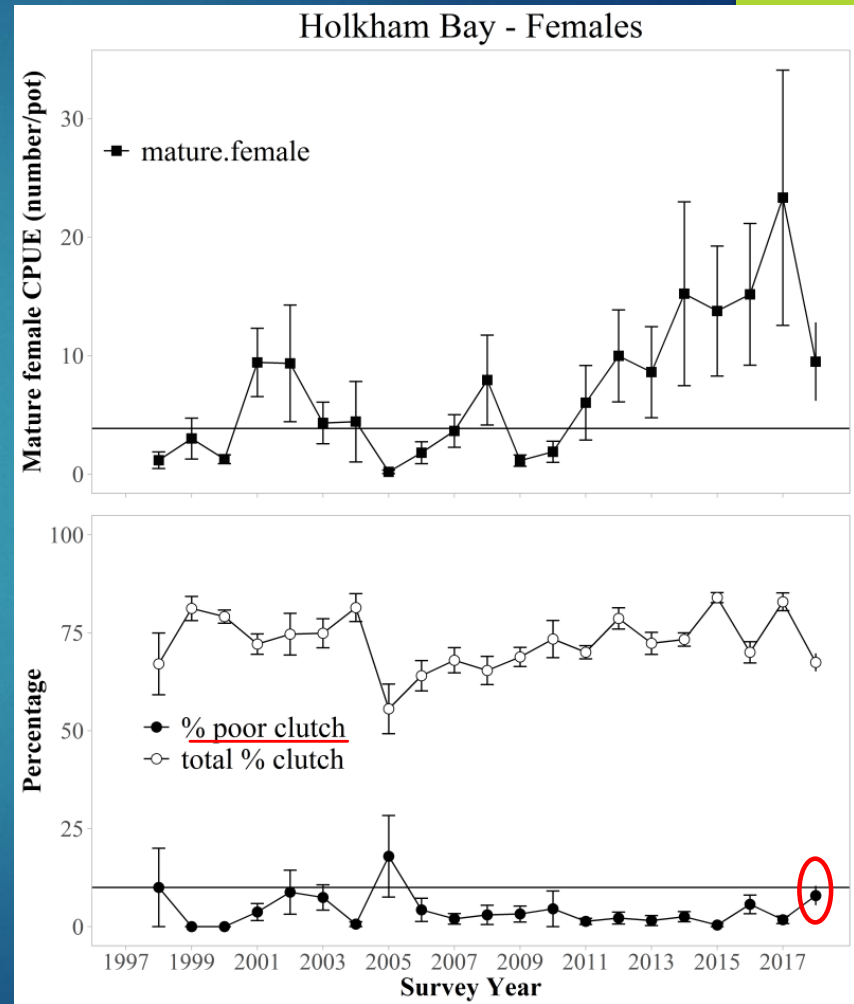
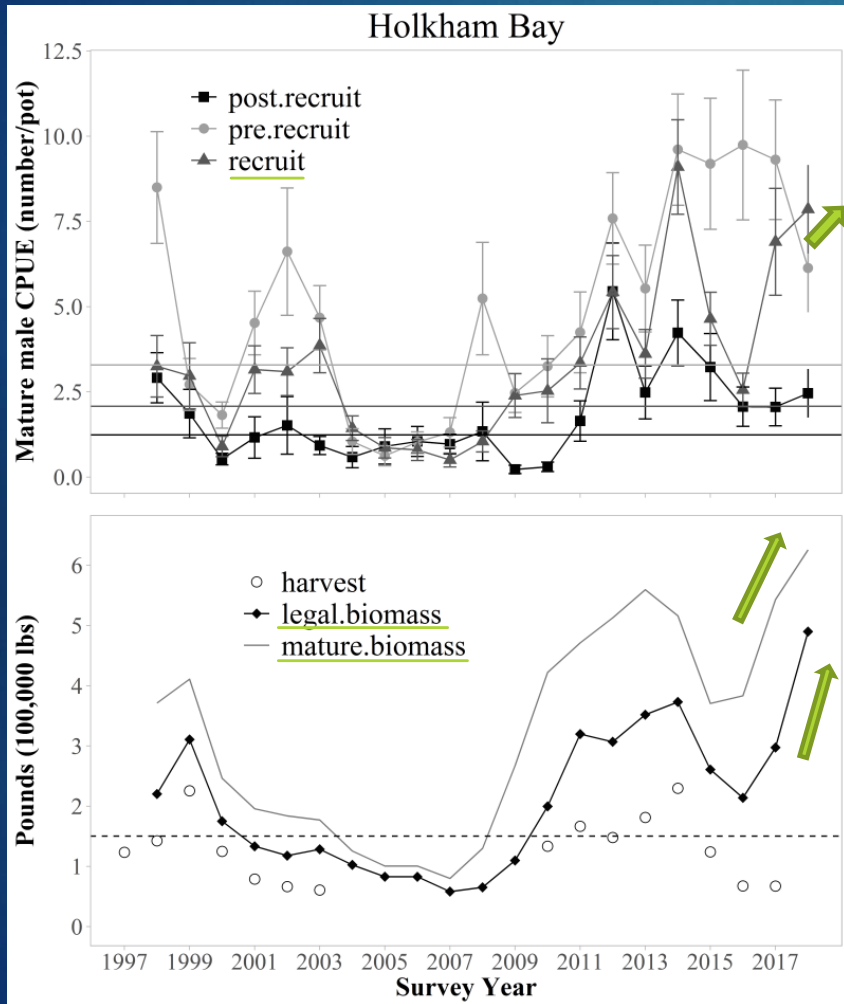
# Glacier Bay



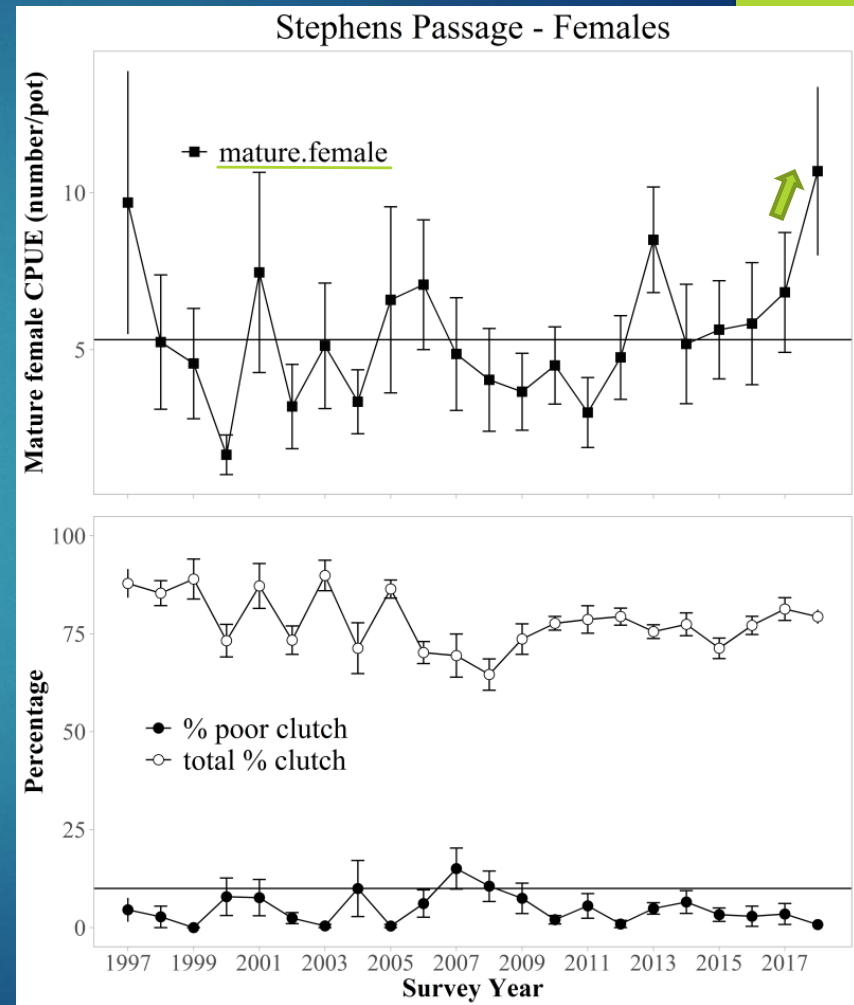
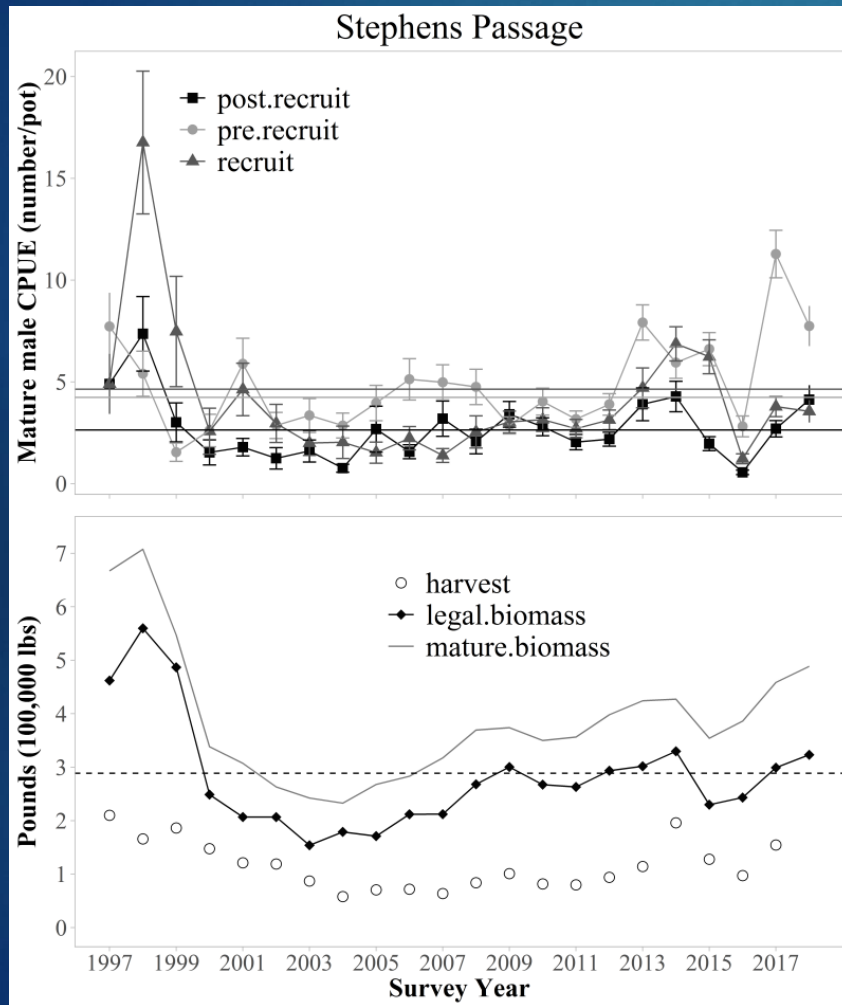
# Thomas Bay



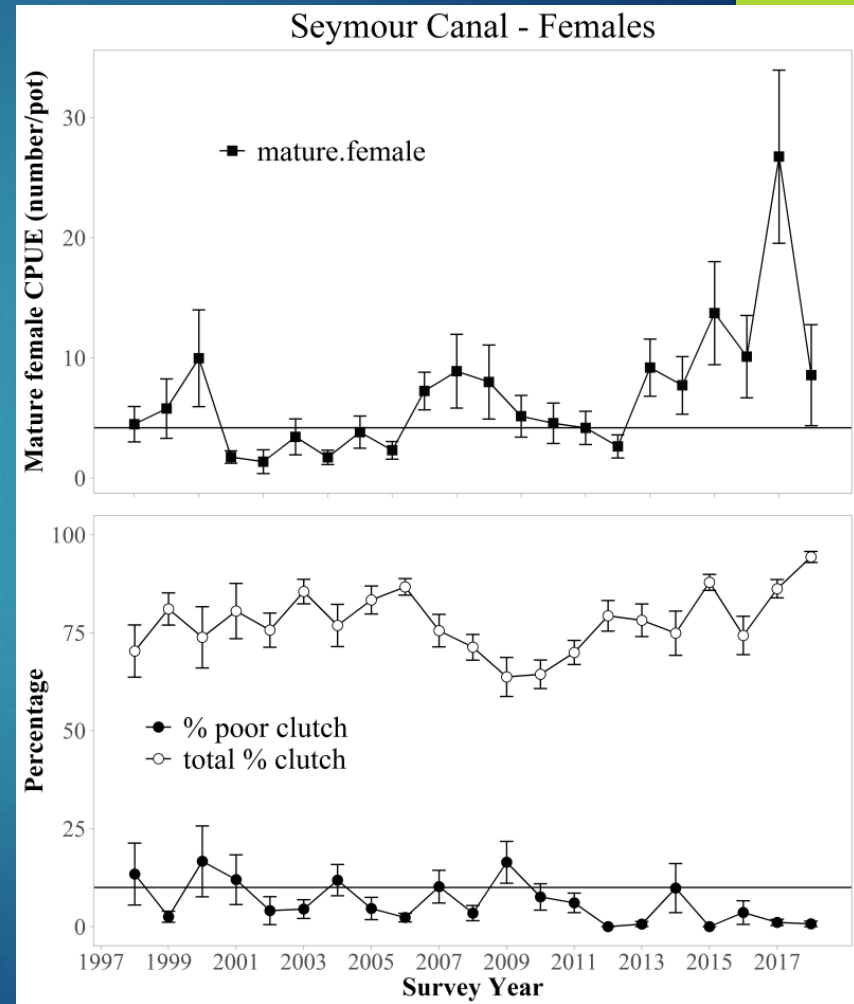
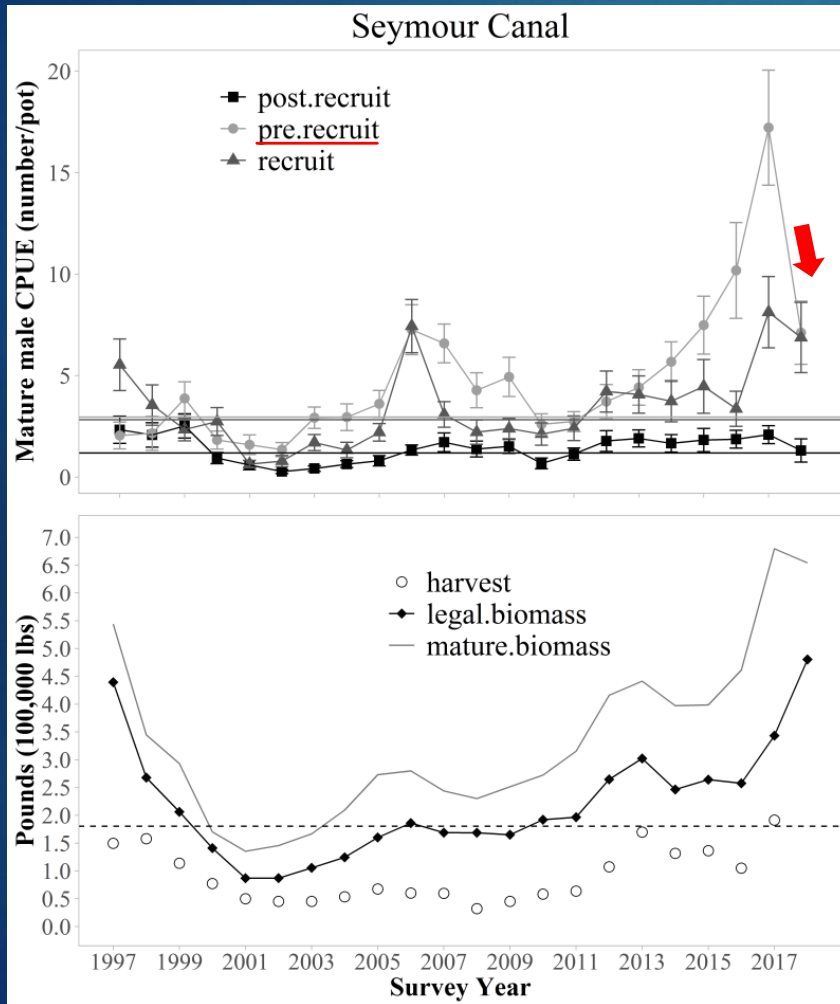
# Holkham Bay



# Stephens Passage

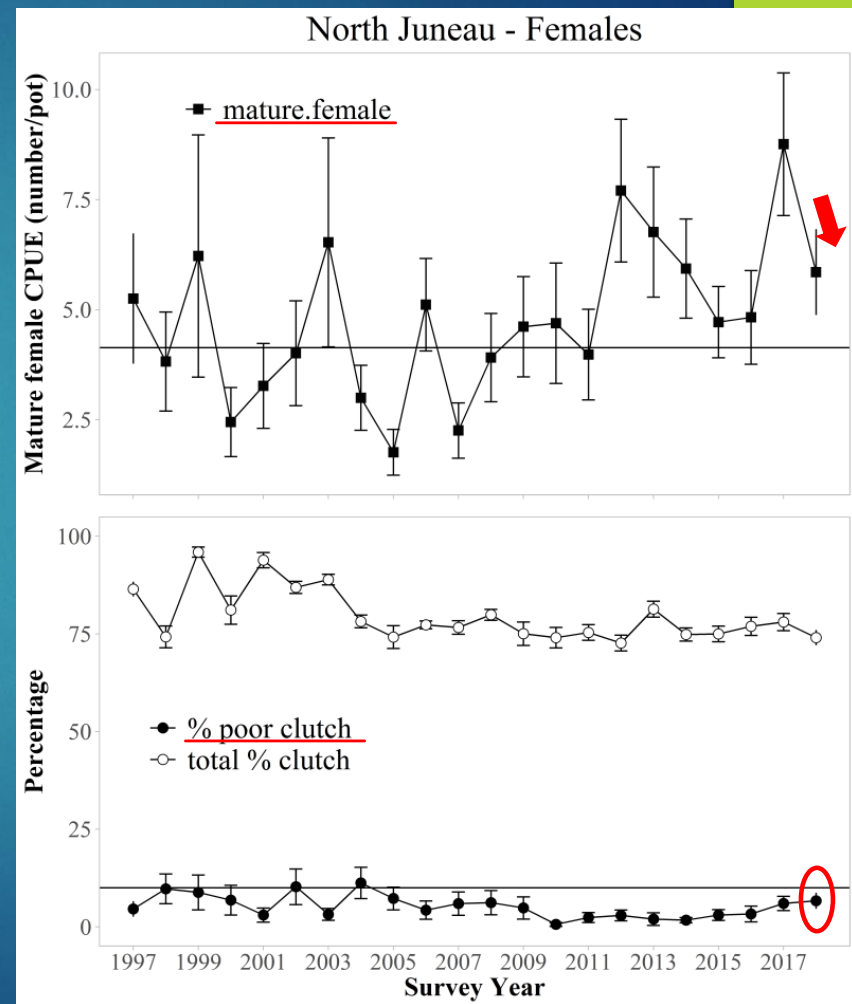
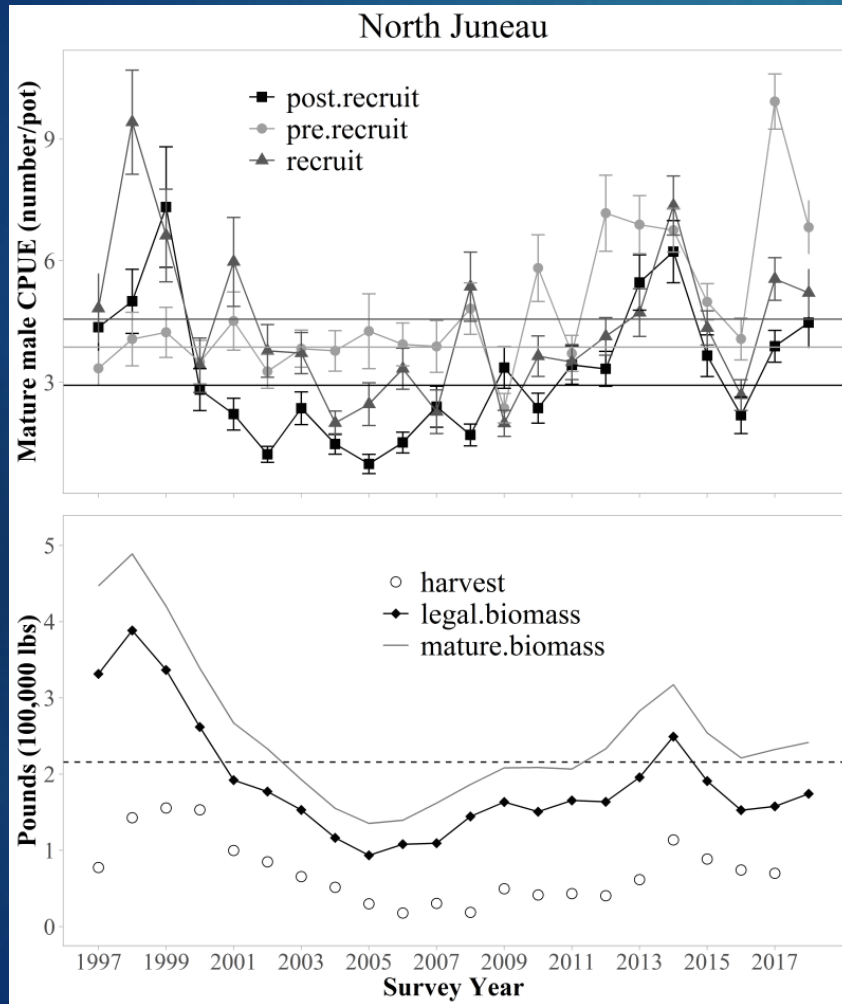


# Seymour Canal

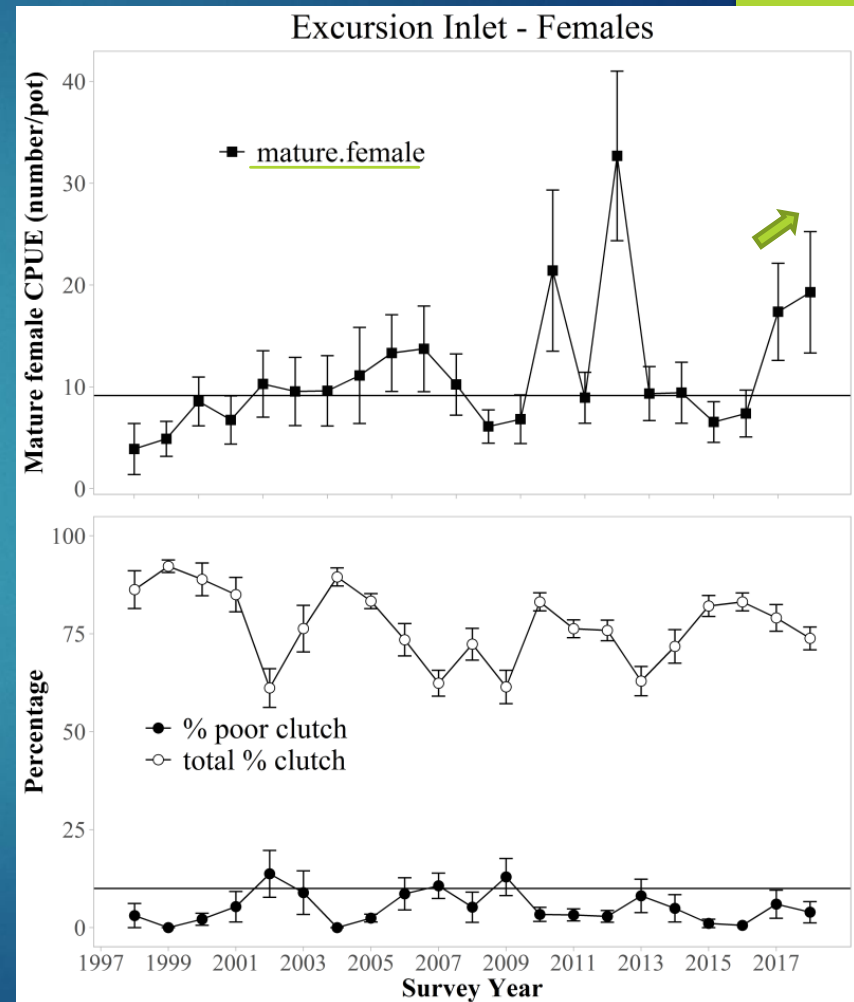
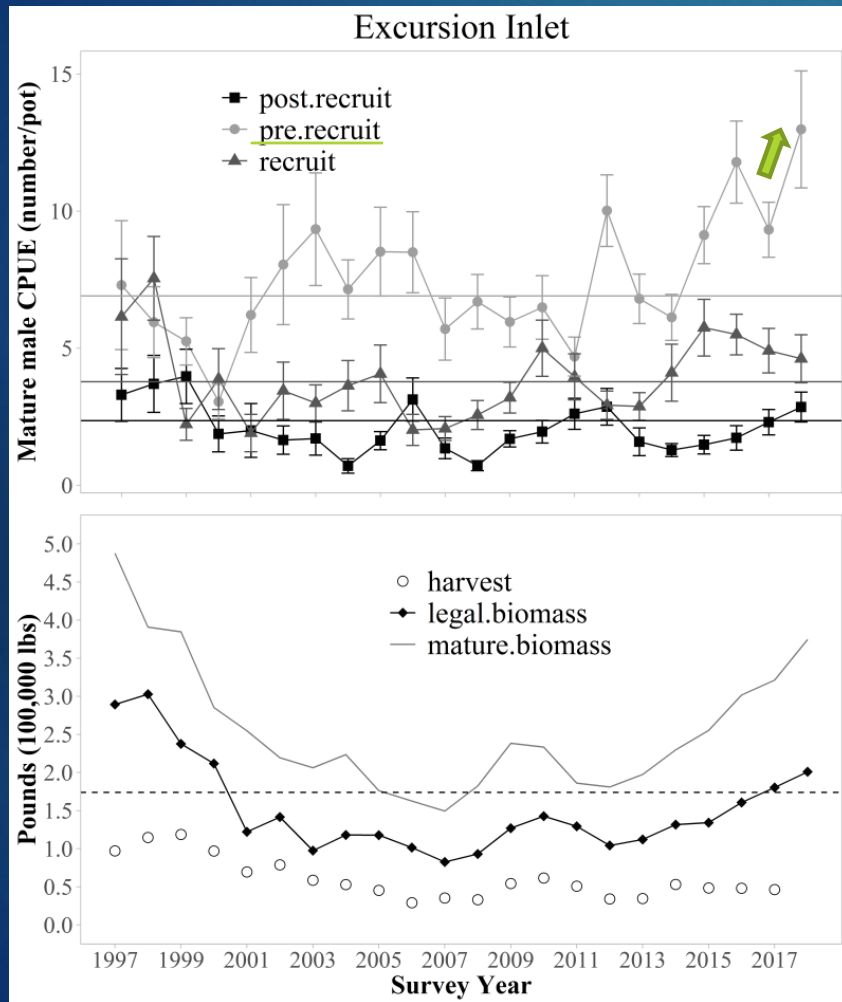




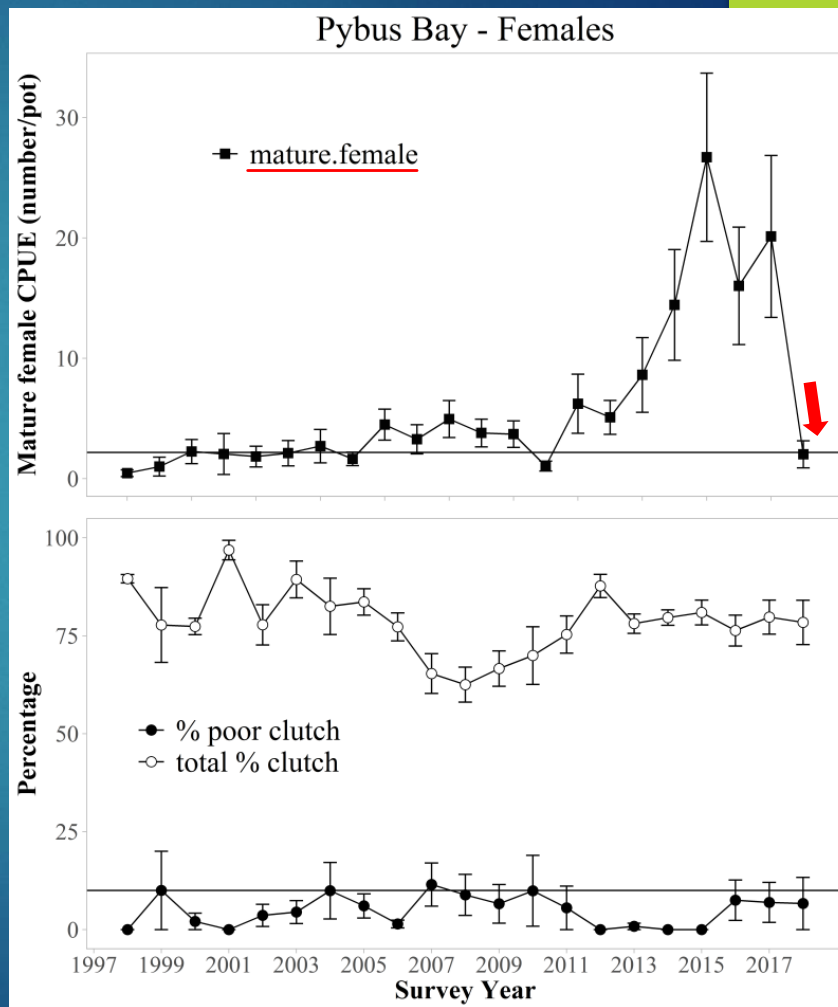
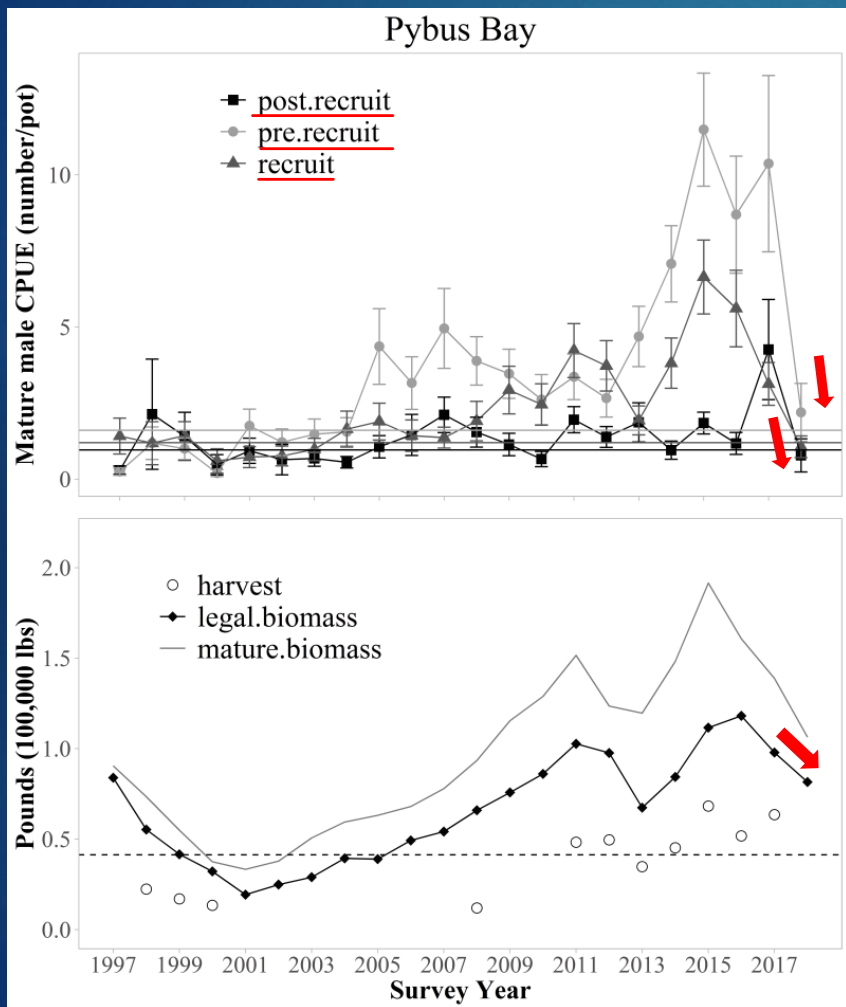
# North Juneau



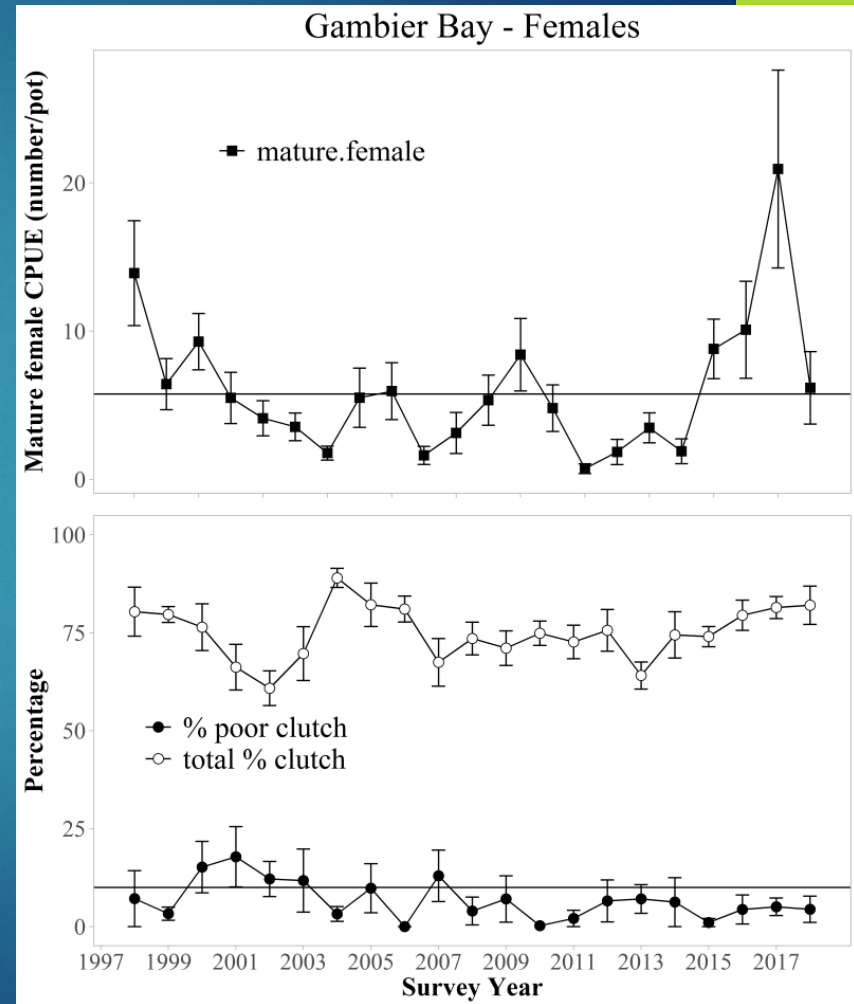
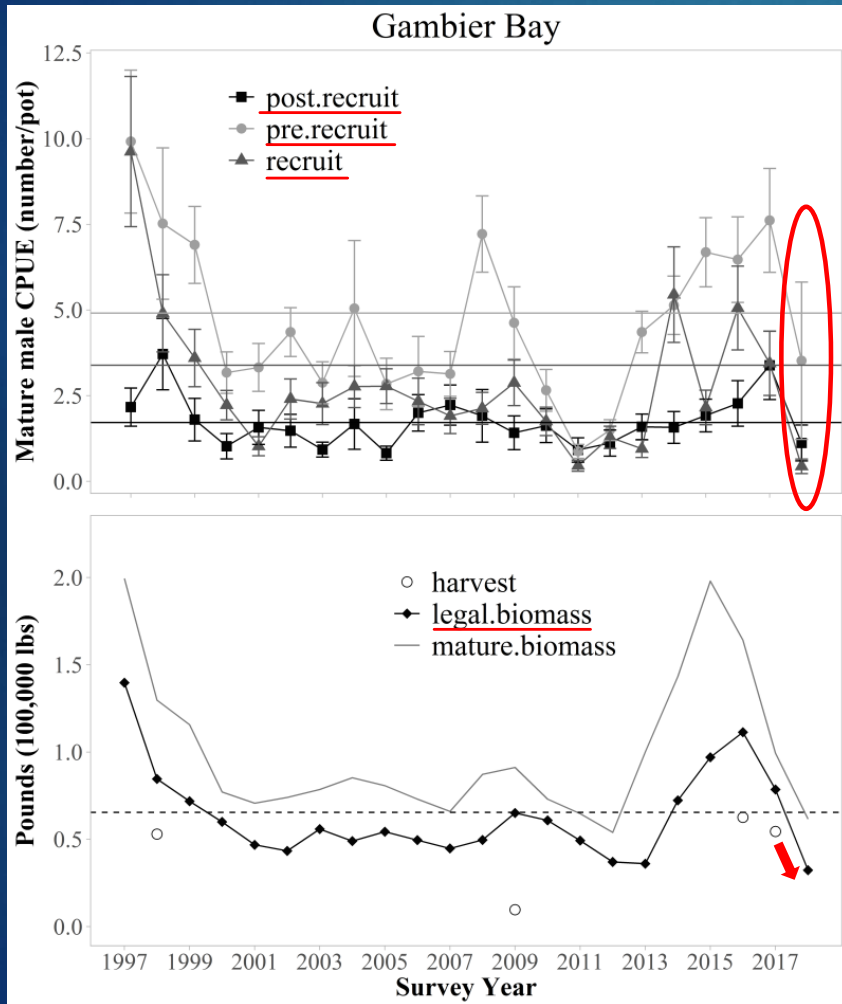
# Excursion Inlet



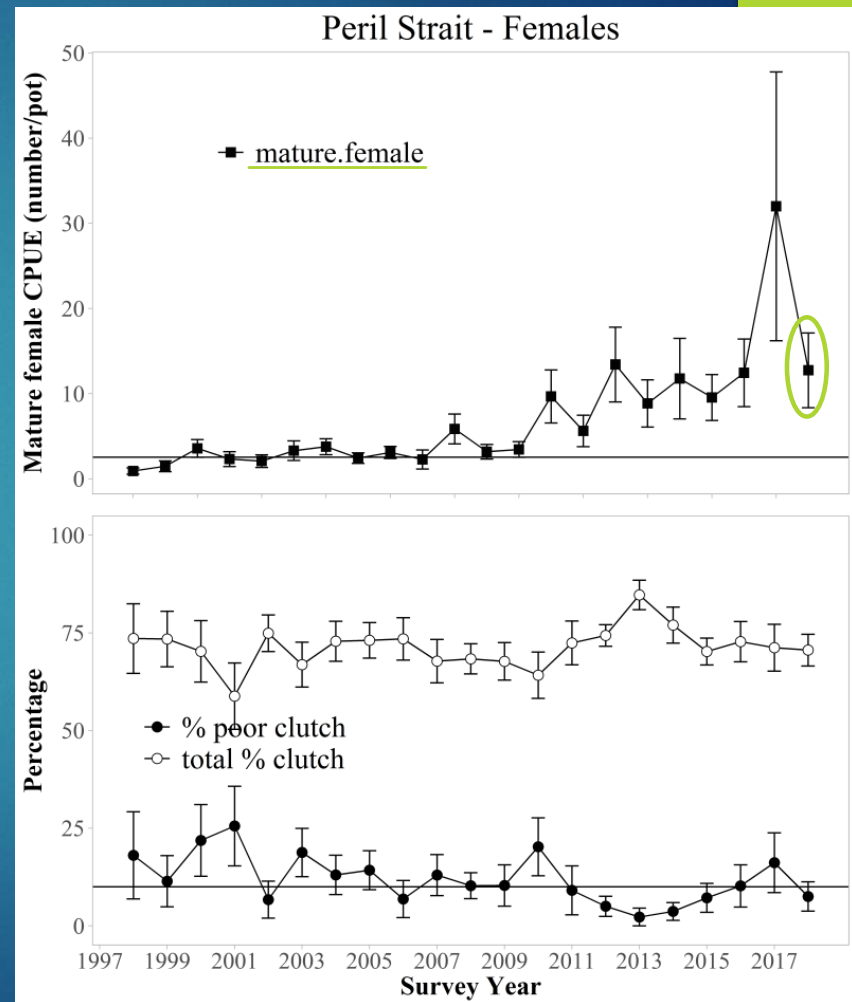
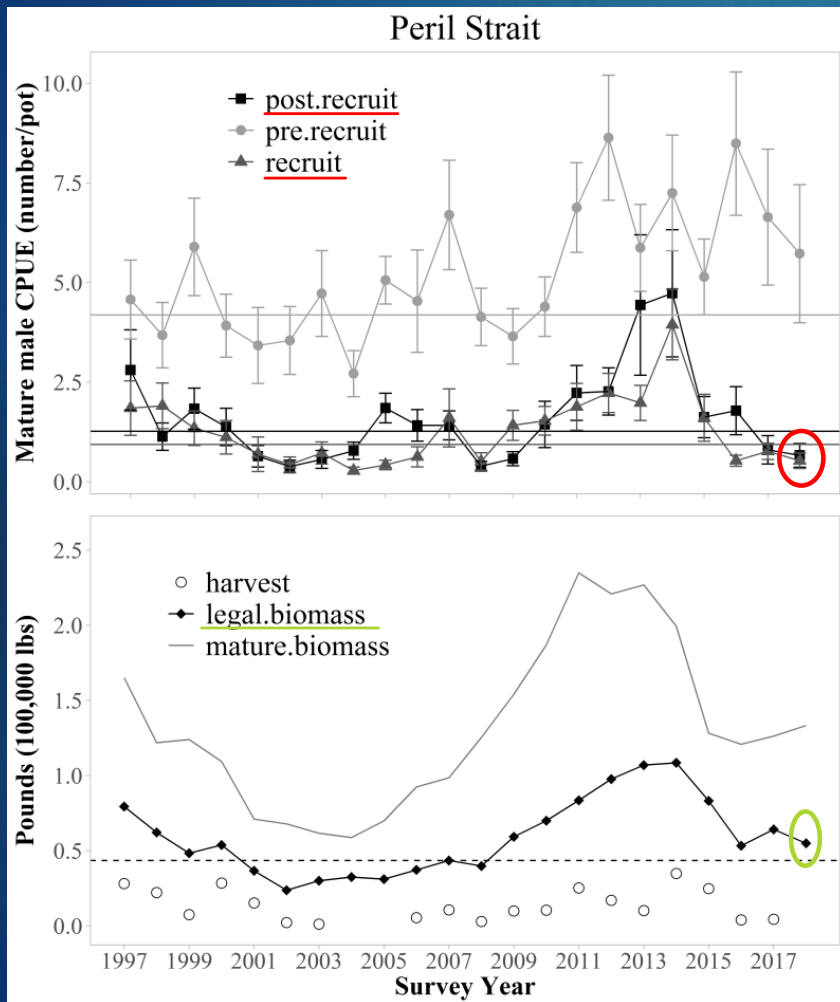
# Pybus Bay



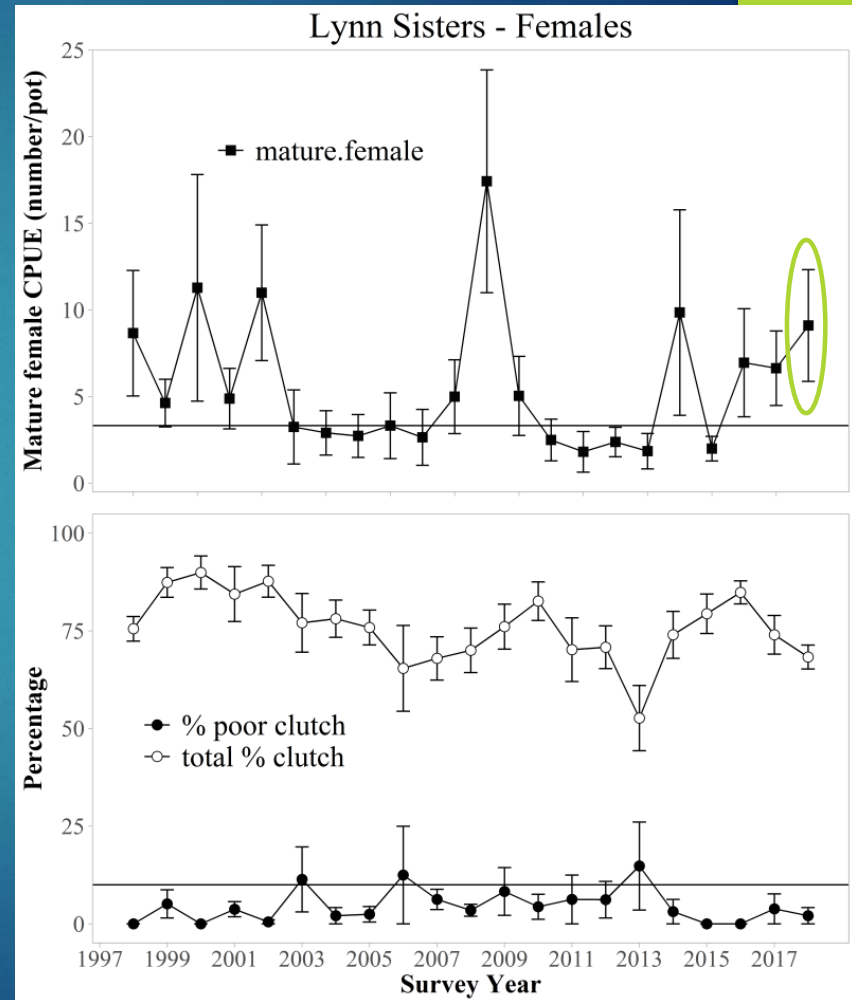
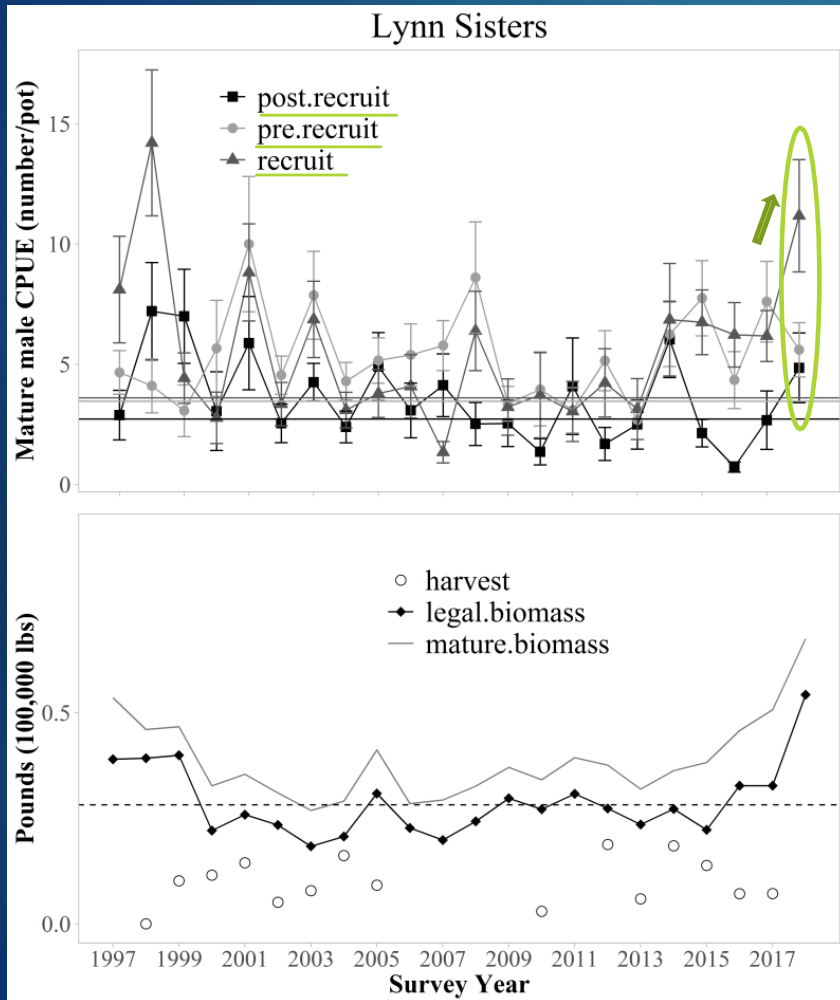
# Gambier Bay



# Peril Strait



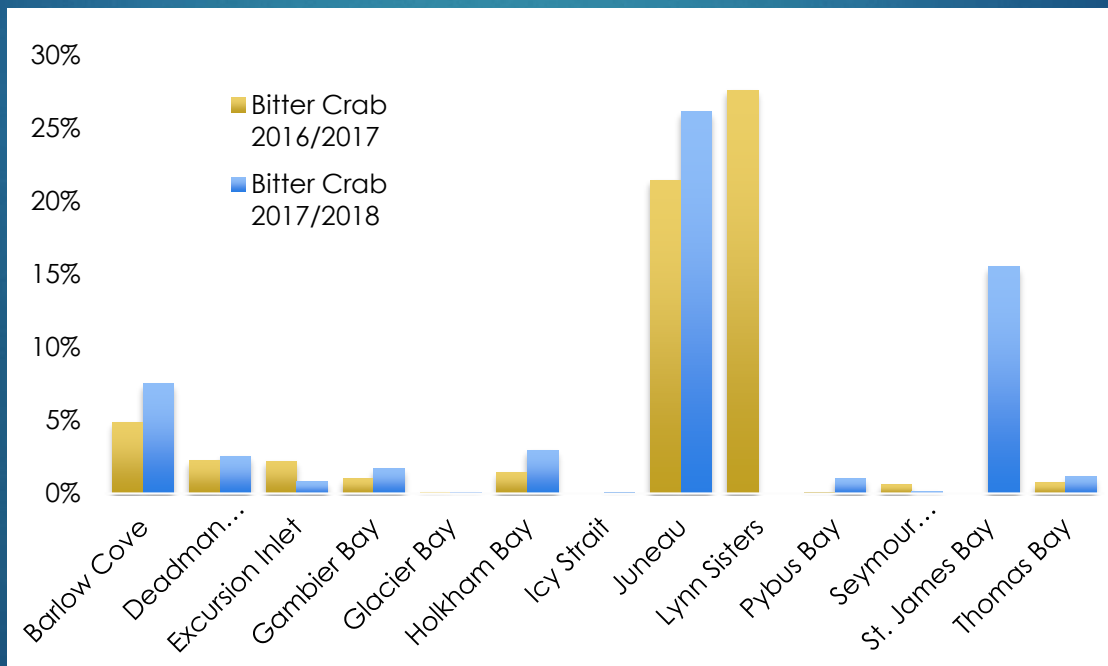
# Lynn Sisters



# Bitter Crab

## Survey

Survey Area	% Bitter 2017/18	% Bitter 2016/17
Lynn...	---	27.6
Juneau	26.1	21.4
Barlow...	7.5	4.9
Deadman...	2.5	2.2
Excursion...	0.8	2.2
Holkham...	2.9	1.5
Gambier...	1.7	1.0
Thomas...	1.1	0.7
Seymour...	0.2	0.6
Glacier...	0.1	0.1
Pybus...	1.0	0.1
Icy...	0.0	0.0



## Fishery

Southeast Area	% Bitter 2017/18	% Bitter 2016/17
11-A	27	21
15-C & B	28	13
15-A	46	41

# Thanks!

