



**2018
Post Season
Review**

**Purse Seine
Districts 101-104**

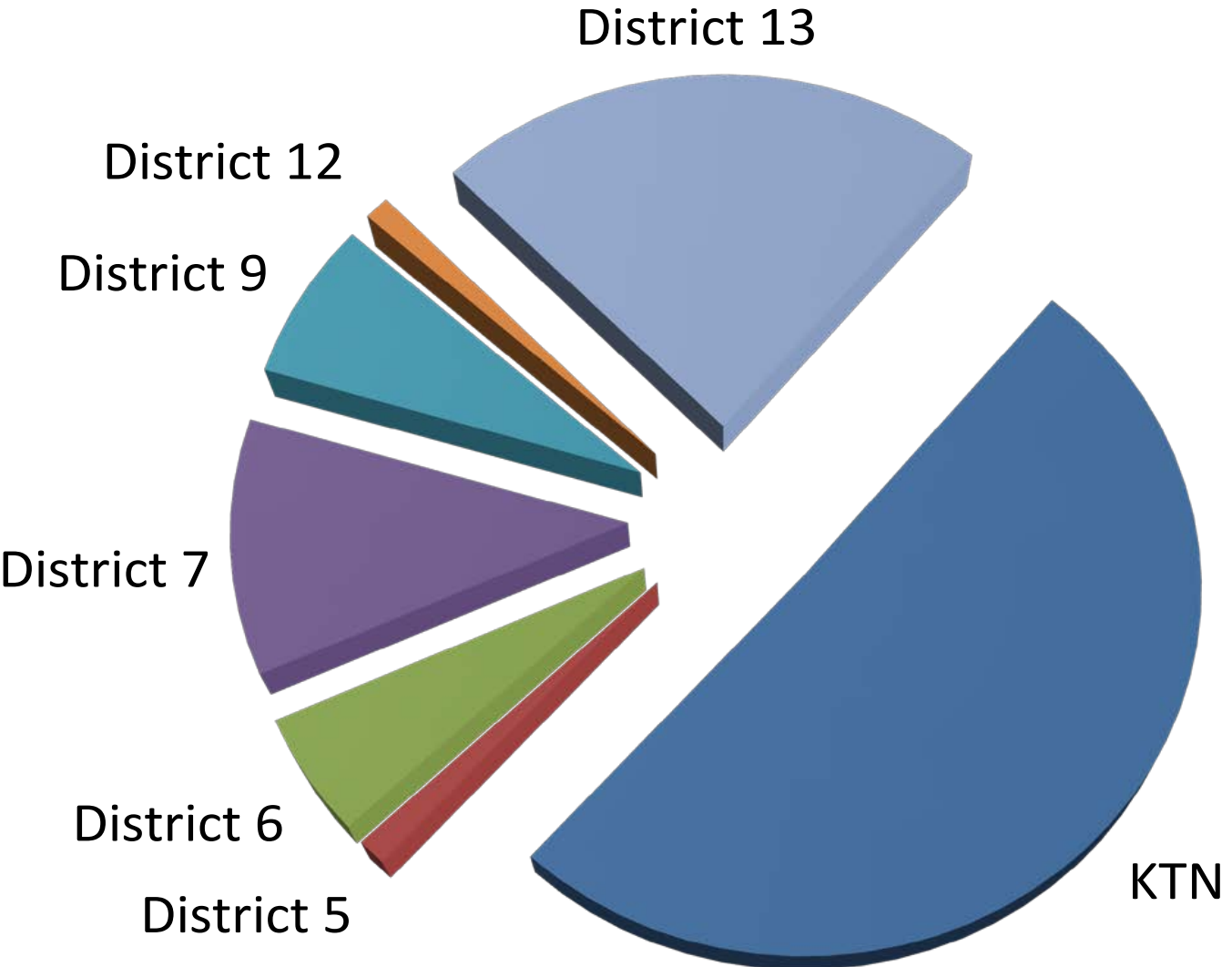
Bo Meredith and Scott Walker

Purse Seine Catch – 2018 – All Districts Traditional Harvest Only

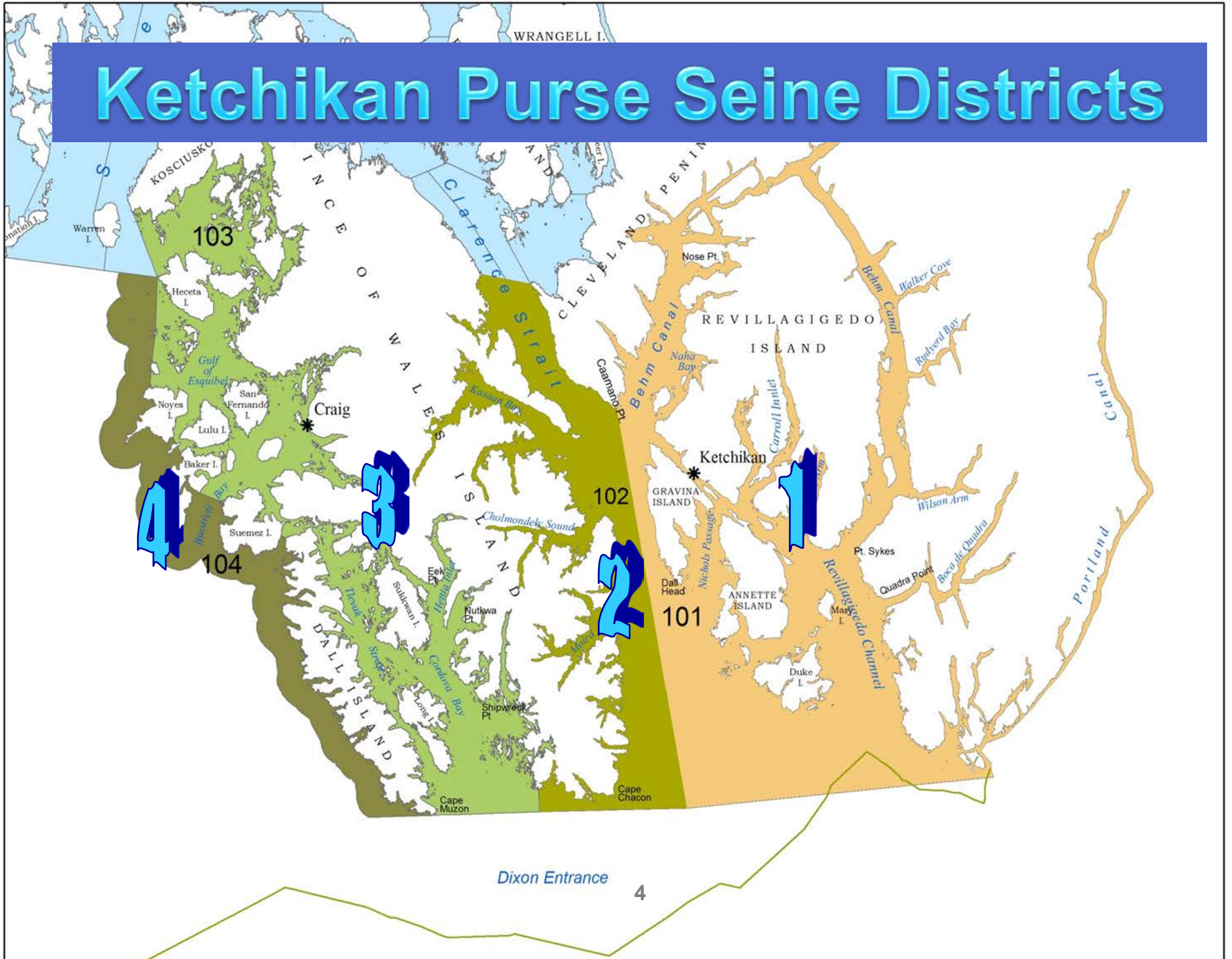
District	Chinook >28"	Sockeye	Coho	Pink	Chum	Total	Number of Permits
District 1	0	22,993	8,513	630,185	120,995	782,686	95
District 2	0	22,604	16,911	474,439	418,049	932,003	133
District 3	0	16,637	23,643	1,465,716	86,132	1,592,128	93
District 4	0	121,365	37,511	789,552	114,796	1,063,224	85
District 5	0	1,098	572	98,916	4,397	104,983	12
District 6	0	4,384	7,392	357,976	45,615	415,367	44
District 7	0	5,788	7,989	750,707	259,587	1,024,071	100
District 9	0	1,638	5,906	466,562	29,120	503,226	36
District 12	0	2,800	922	71,366	31,929	107,017	46
District 13	0	19,758	9,983	1,554,493	241,856	1,826,090	89
Total	0	219,065	119,342	6,659,912	1,352,476	8,350,795	239

Total boats all Southeast = 239

SE AK Purse Seine Pink Salmon Harvest – 2018



Ketchikan Purse Seine Districts



Ketchikan Net Harvests – 2018 – All Fisheries

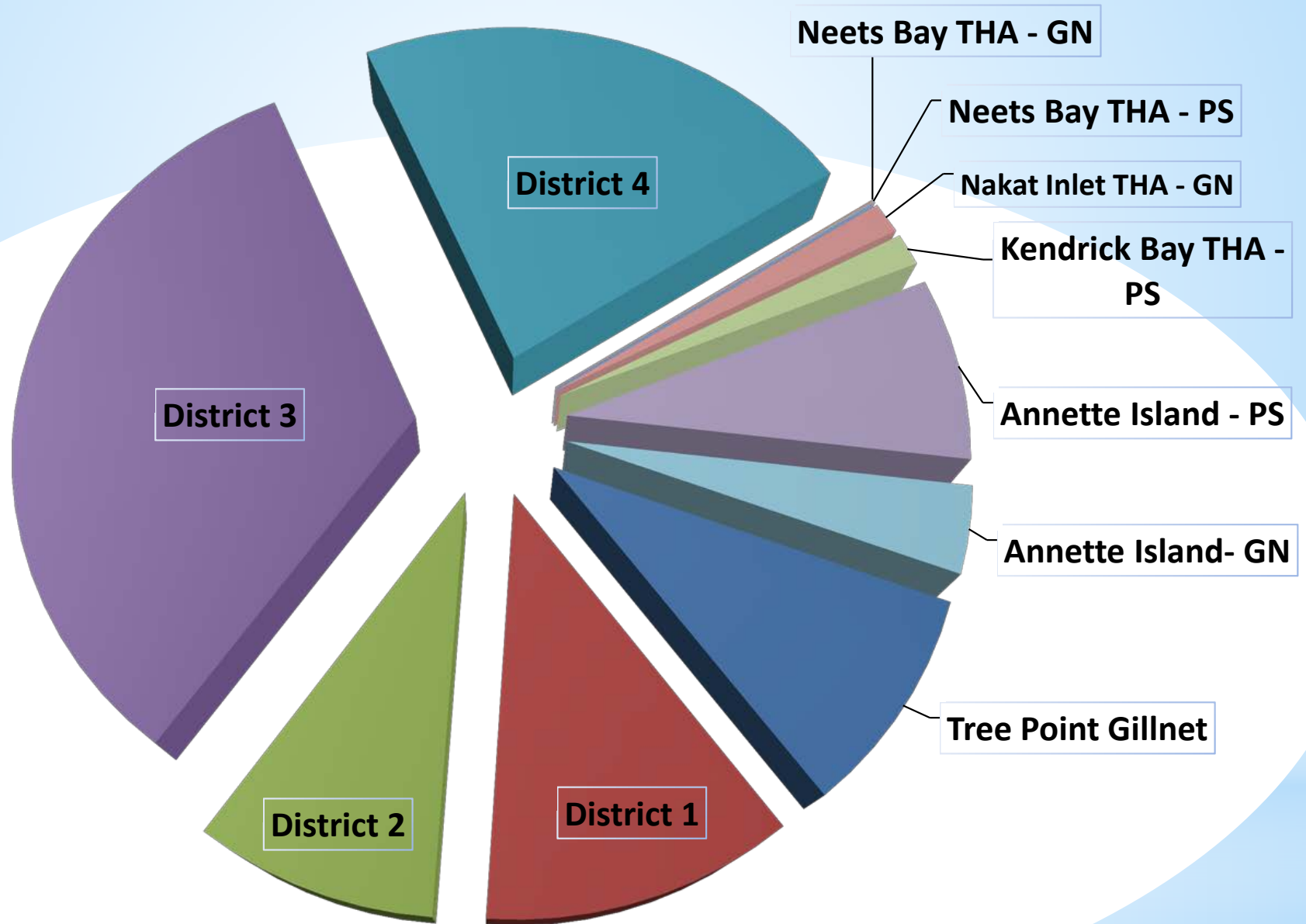
2018 Ketchikan Area Commercial Net Harvests

Purse Seine and Gillnet Common Property Fisheries - Districts 1-4

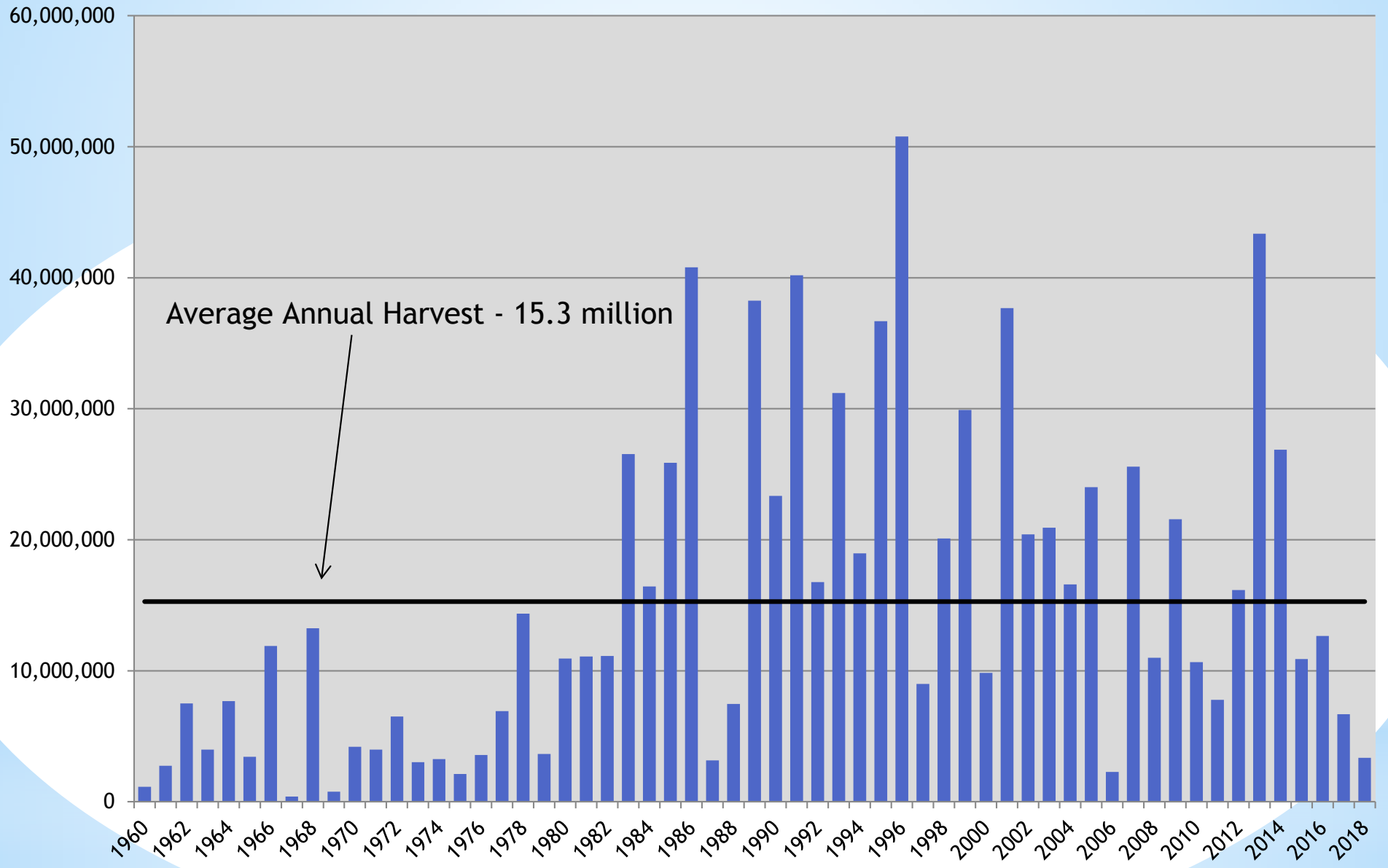
Fishery	Chinook	Sockeye	Coho	Pink	Chum	Totals
PS 101	46	22,993	8,513	630,185	120,995	782,732
PS 102	23	22,604	16,911	474,439	418,049	932,026
PS 103	5	16,637	23,643	1,465,716	86,132	1,592,133
PS 104	146	120,930	37,472	789,435	114,796	1,062,779
GN 101	1,620	19,920	35,457	113,346	187,309	357,652
Neet Bay THA GN	2,463	2	529	19	18,514	120,110
Neets Bay THA PS	5,530	37	1,066	692	58,148	65,473
Nakat THA GN	192	890	8,134	10,991	99,903	120,110
Kendrick THA PS	2	1,783	988	14,415	152,084	169,272
Annette Island GN	1,120	1,803	13,859	126,356	152,276	295,414
Annette Island PS	421	4,488	2,584	169,208	40,610	217,311
Totals	11,634	212,053	147,259	3,785,278	1,437,203	5,692,010

PS - Boats in Districts 1-4 = 187 Districts 5-16 = 218 All Southeast = 242

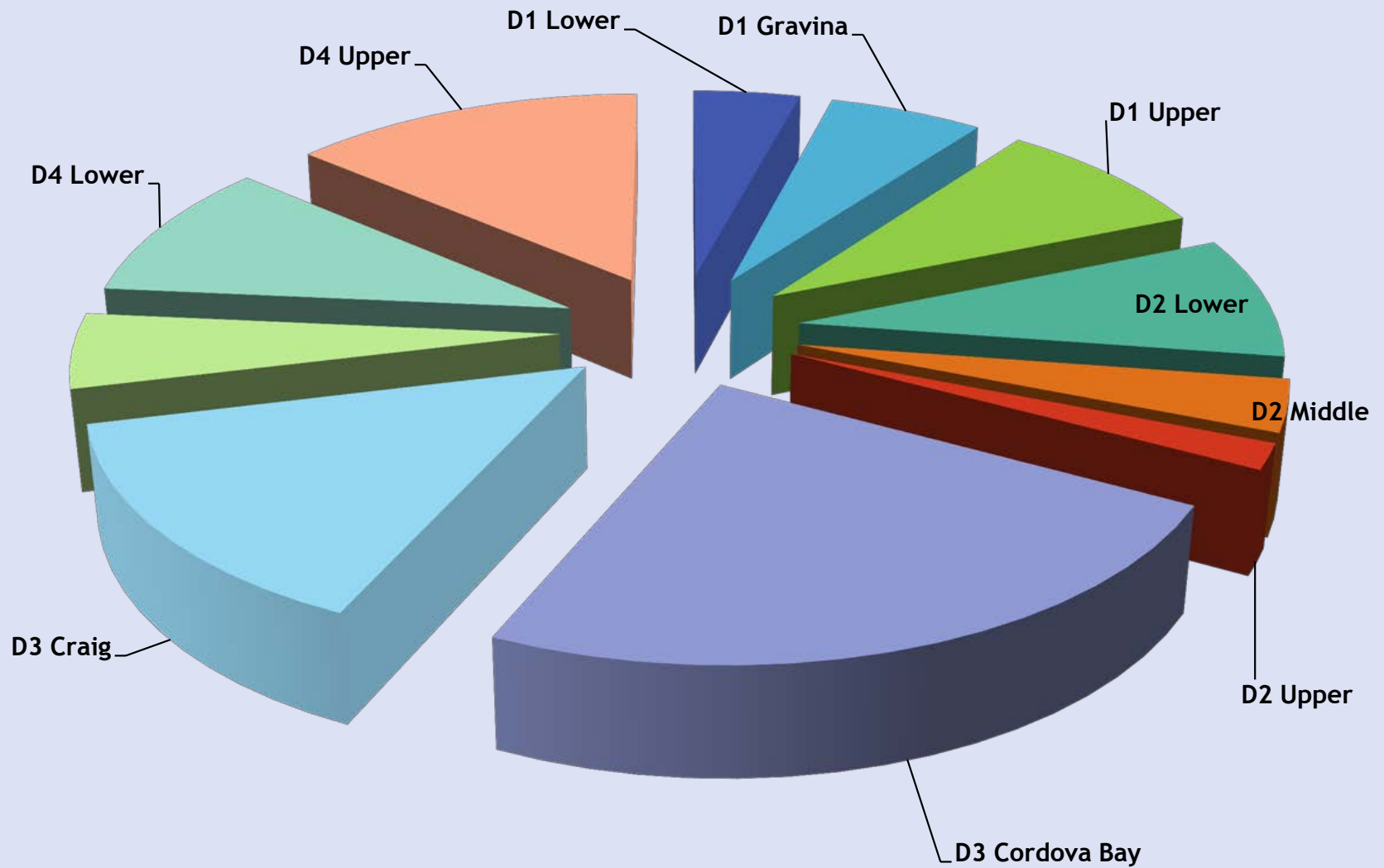
2018 Ketchikan Harvest by Fishing Area – Harvest of all Species



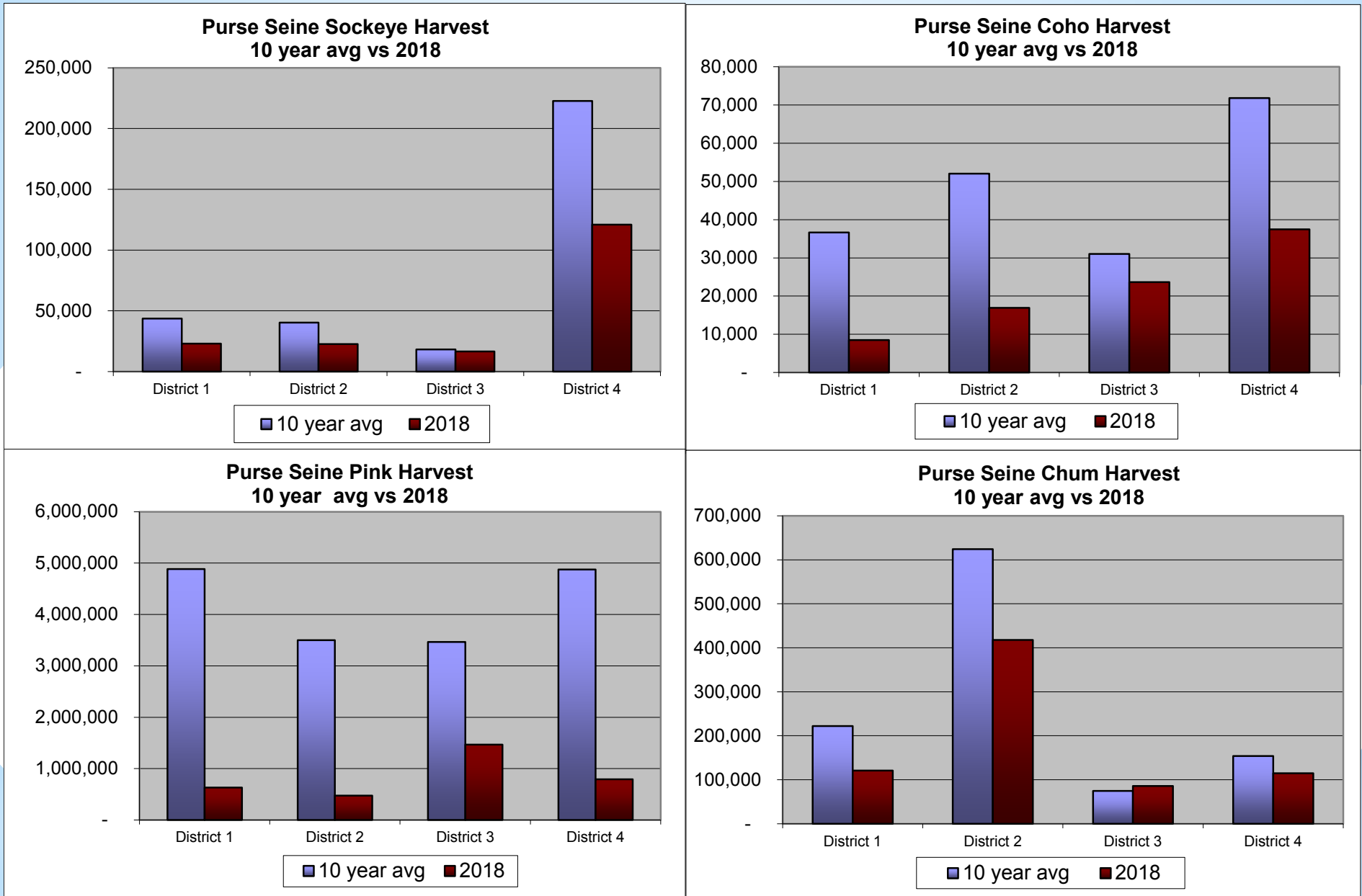
Ketchikan Management Area Traditional Purse Seine Pink Salmon Harvest, 1960-2018



2018 Pink Salmon Catch in the Ketchikan Management Area



Purse Seine Traditional Harvest – 2018 – By District



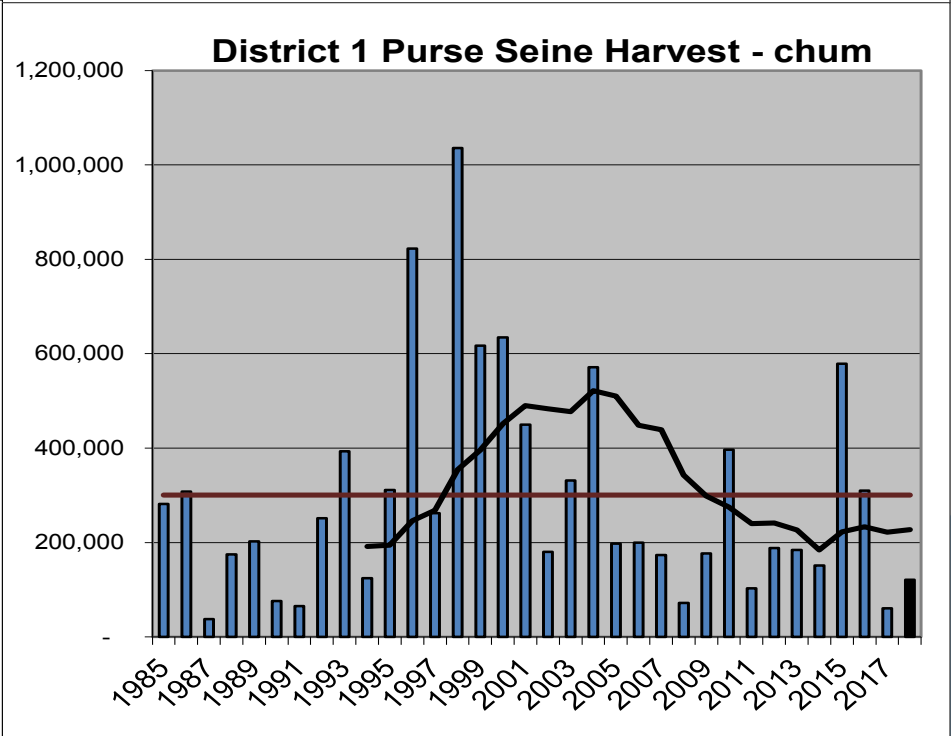
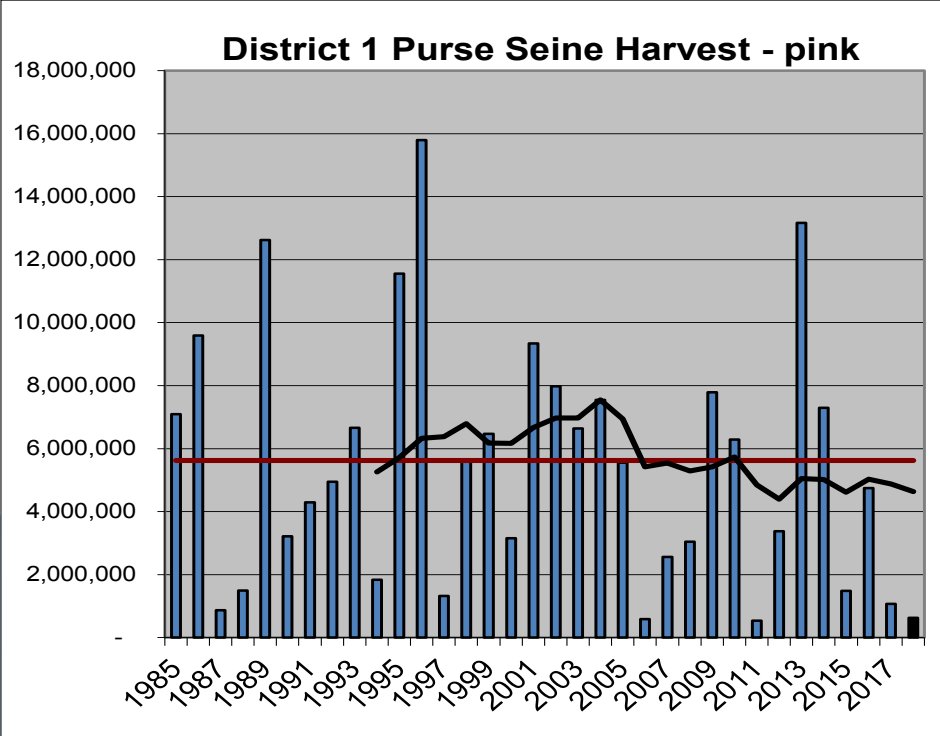
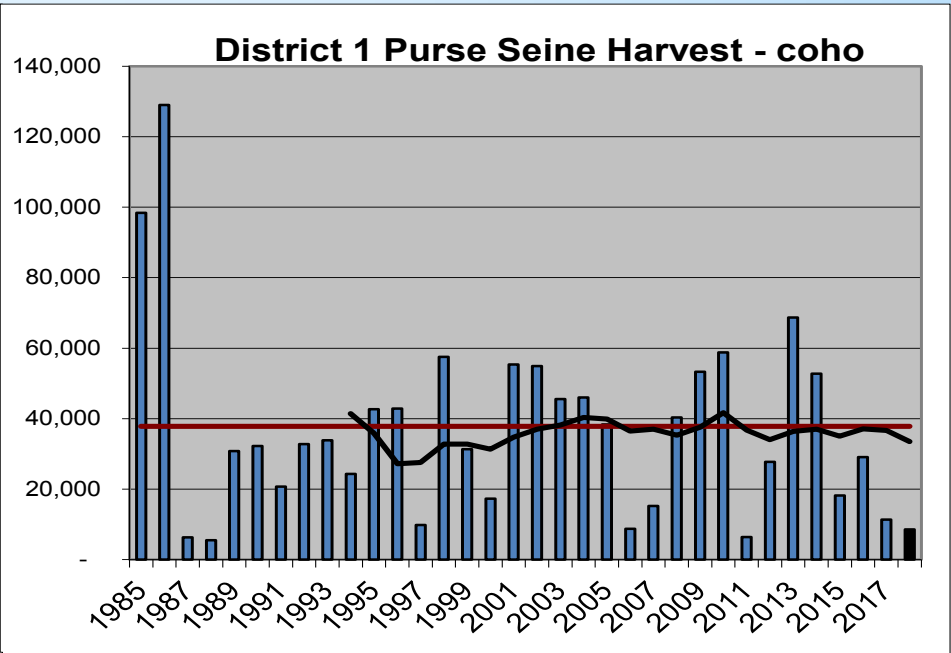
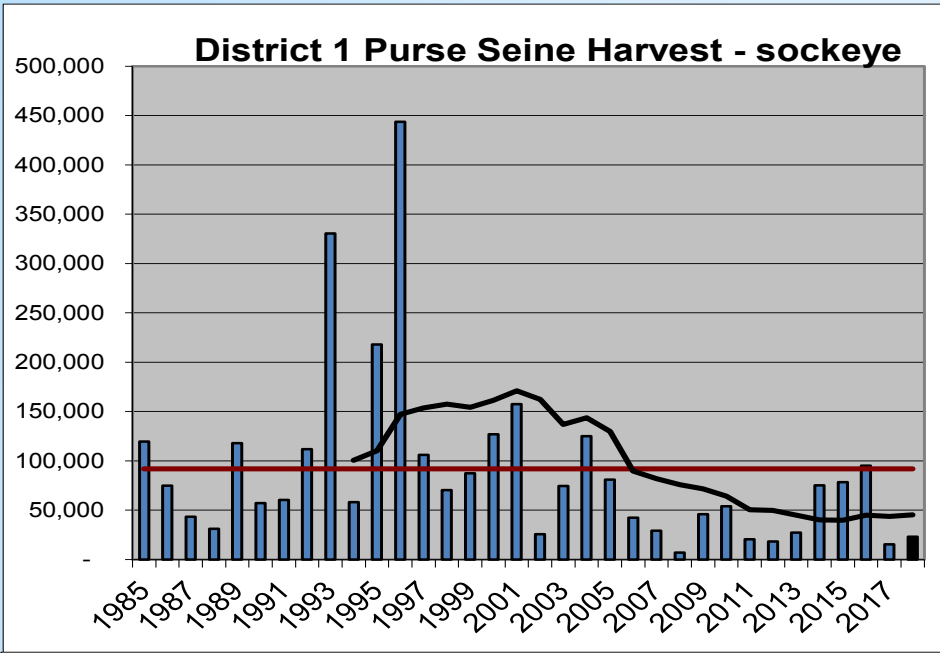
2018 District 1 Purse Seine – Harvest by Opening

2018 District 1 Purse Seine

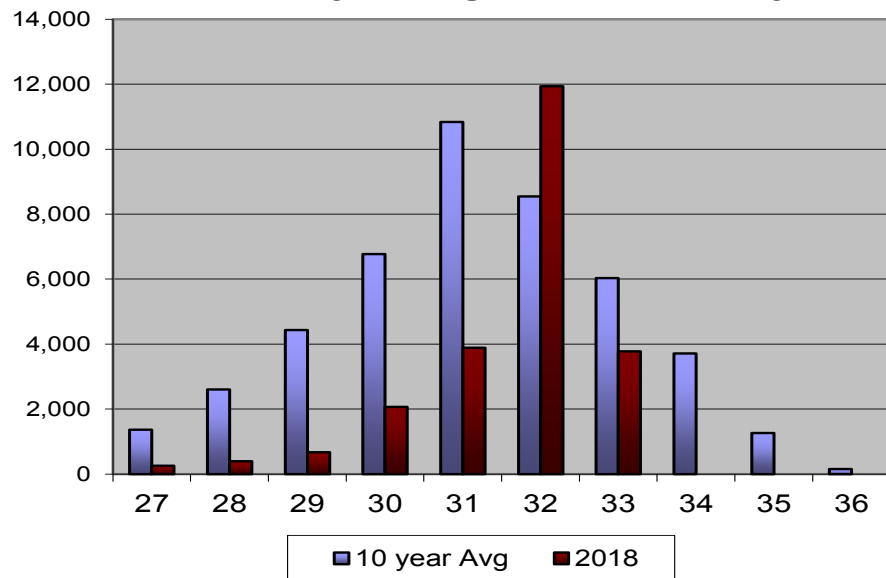
Opening	Chinook					Boats	Hours
	> 28"	Sockeye	Coho	Pink	Chum		
27	0	259	161	1,212	8,898	19	15
28	0	394	265	14,724	7,141	29	15
29	0	673	514	53,441	12,687	22	15
30	0	678	491	75,498	18,028	33	15
30B	0	1,389	514	46,897	13,507	29	15
31	0	1,138	927	95,793	17,681	50	15
31B	0	2,745	1,131	116,937	9,994	43	15
32	0	8,627	1,815	109,789	19,770	39	15
32B	0	3,312	1,136	57,109	5,945	19	15
33	0	1,827	784	36,133	4,490	13	15
33B	0	1,951	775	22,652	2,854	18	15
Total	0	22,993	8,513	630,185	120,995	95	165

D1 closed on August 16.

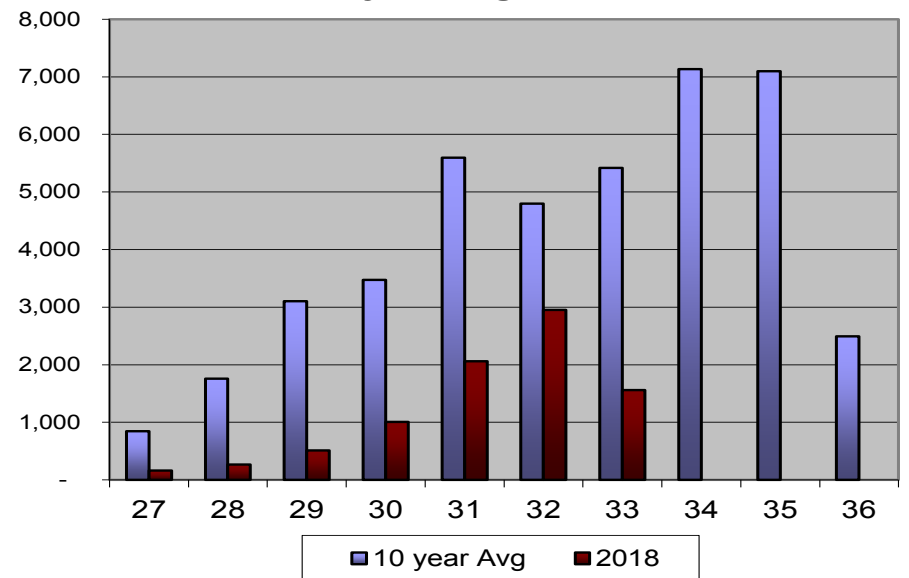
Pinks ranked 48 of 59 since 1960. 3rd lowest since 1985, behind 2006 and 2011.



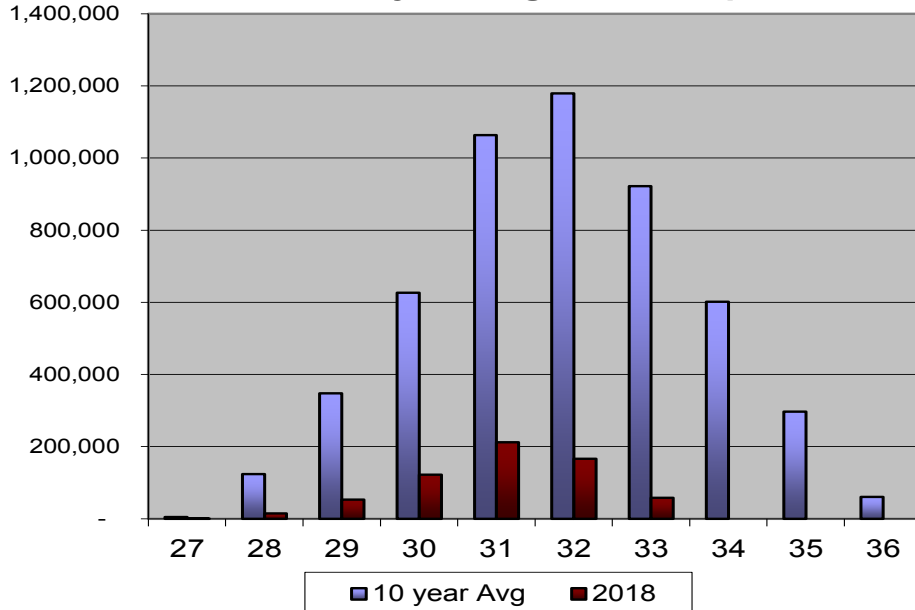
**District 1 Purse Seine Weekly Harvest
10 year avg vs 2018 - sockeye**



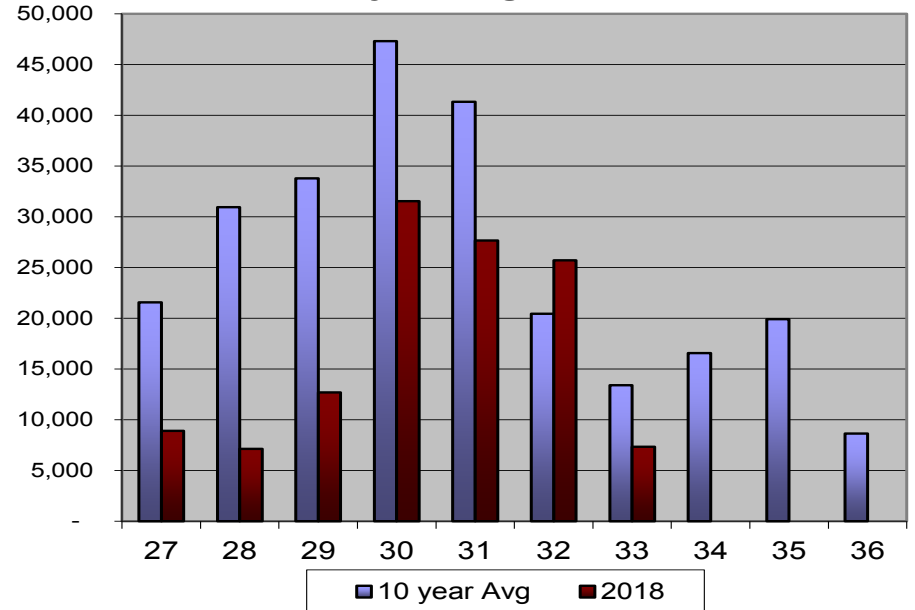
**District 1 Purse Seine Weekly Harvest
10 year avg vs 2018 - coho**



**District 1 Purse Seine Weekly Harvest
10 year avg vs 2018 - pink**



**District 1 Purse Seine Weekly Harvest
10 year avg vs 2018 - chum**



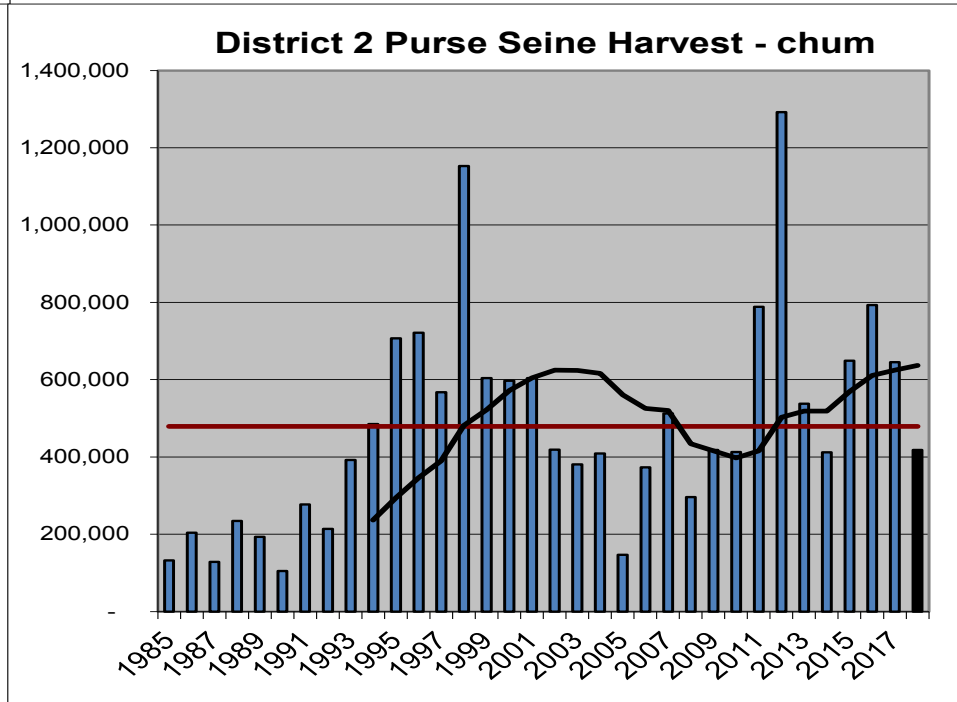
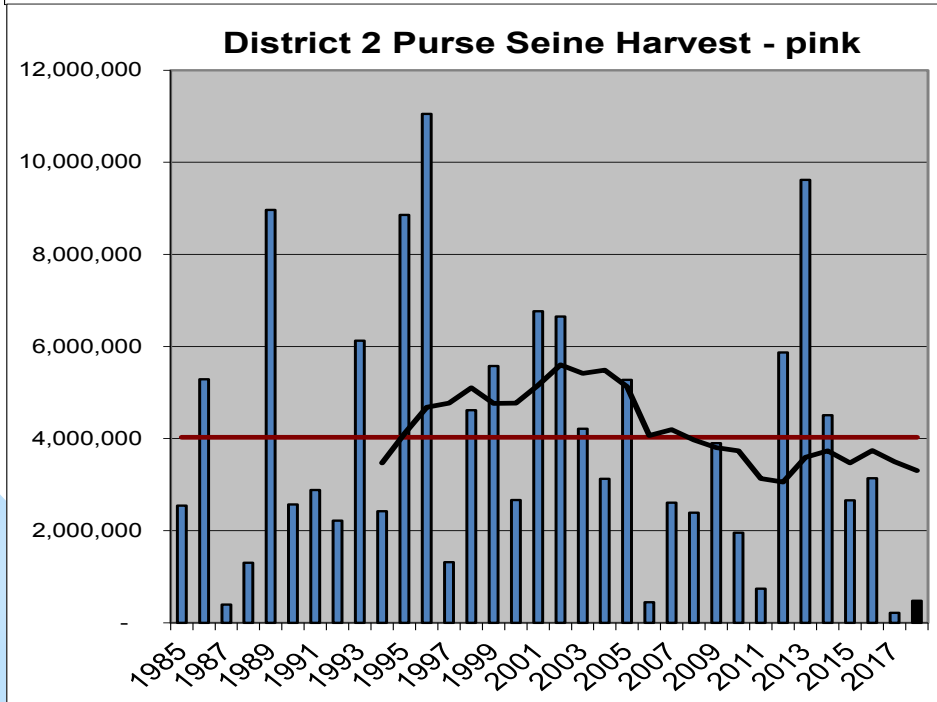
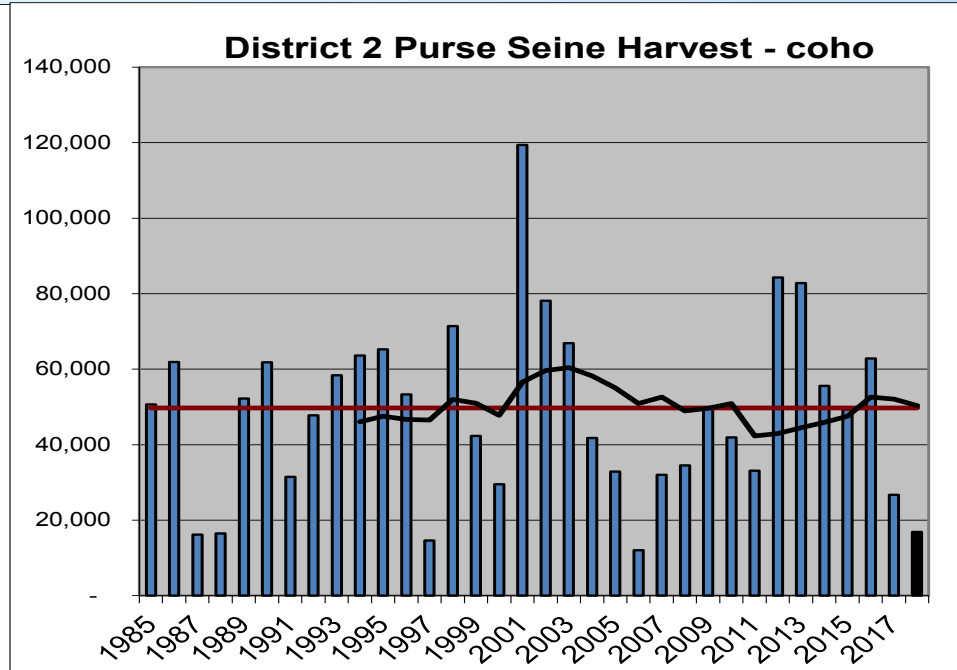
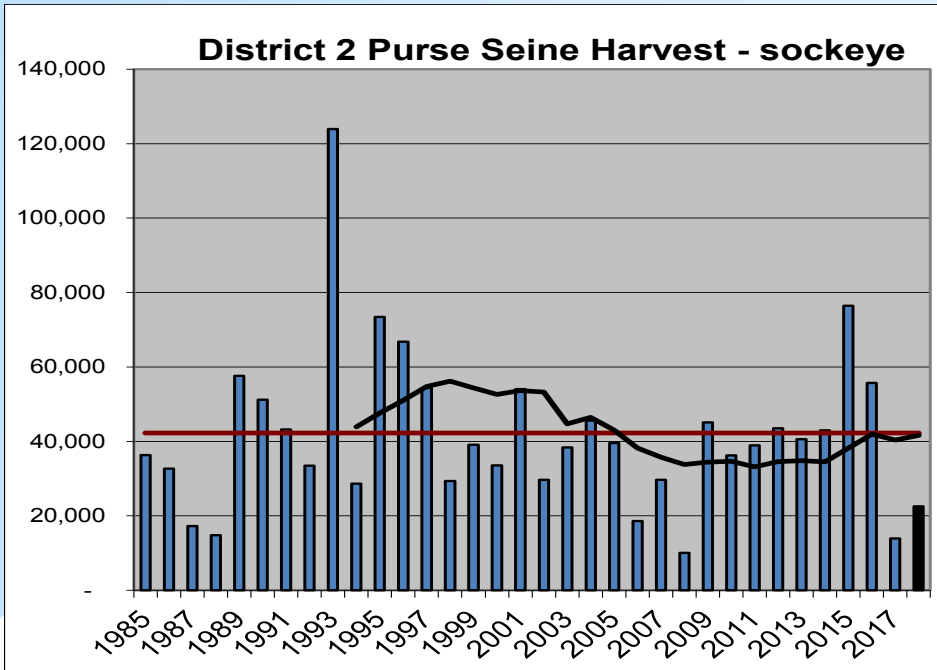
2018 District 2 Purse Seine – Harvest by Opening

2018 District 2 Purse Seine

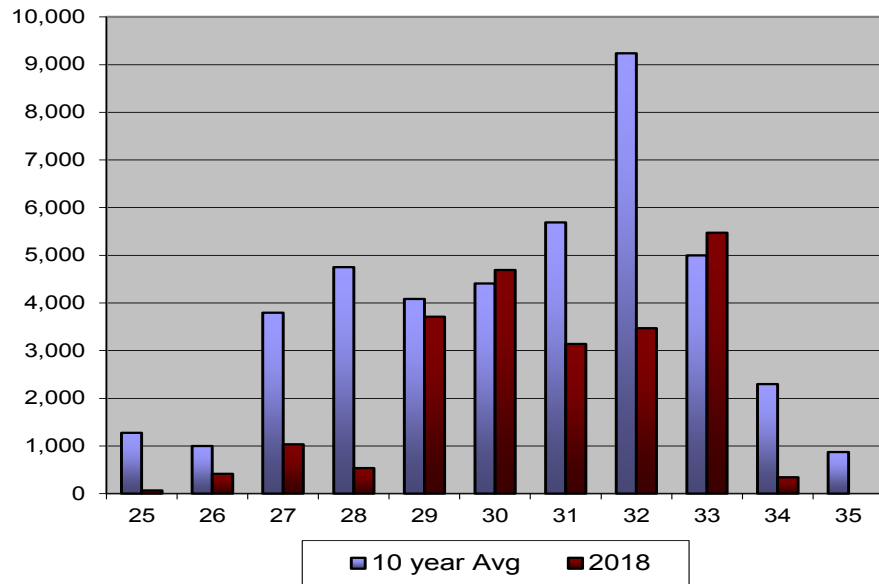
Chinook

	Opening	>28"	Sockeye	Coho	Pink	Chum	Boats	Hours
Early outside Kendrick	25	0	65	246	451	8,680	47	87
	26	0	409	846	737	34,178	53	87
	27	0	581	767	1,799	35,055	52	15
	27B	0	118	104	270	6,945	22	15
	27C	0	332	528	3,579	19,292	35	15
	28	0	542	585	3,192	31,072	31	15
	29	0	1,539	1,669	43,990	68,732	60	15
	29B	0	2,171	2,181	37,649	51,724	65	15
	30	0	2,028	1,222	47,144	40,463	34	15
	30B	0	2,663	664	47,048	21,692	31	15
	31	0	1,558	589	32,577	9,175	26	15
	31B	0	1,581	1,075	53,390	9,947	17	15
	32	0	2,377	1,097	46,853	16,036	17	15
	32B	0	1,094	1,757	49,931	9,570	15	15
Fall Chum Fishery	33	0	2,218	1,080	44,801	7,239	14	15
	33B	0	3,252	2,029	57,996	8,578	27	15
	36	0	49	104	2,689	26,302	7	12
	37	0	27	368	343	13,369	30	12
	Total	0	22,604	16,911	474,439	418,049	133	408

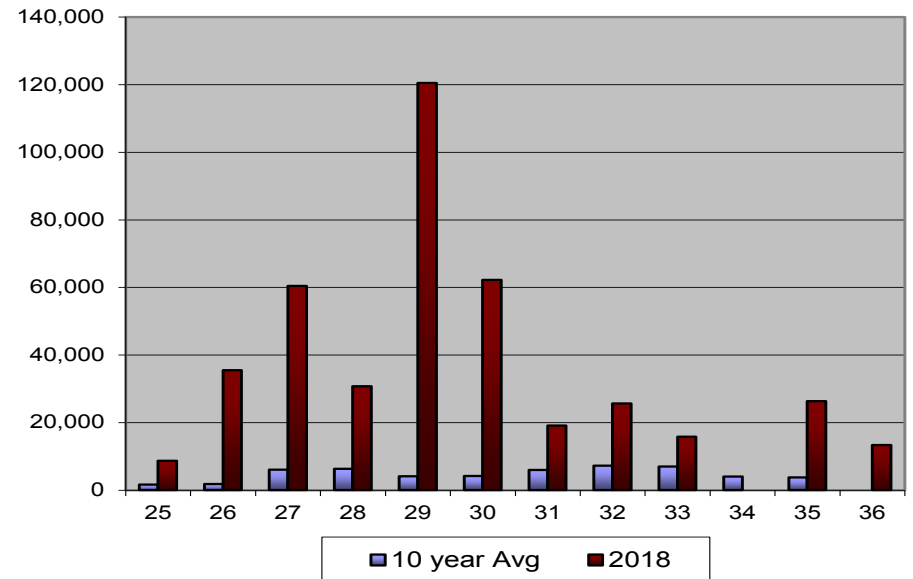
Pinks 6th lowest on record since 1960.



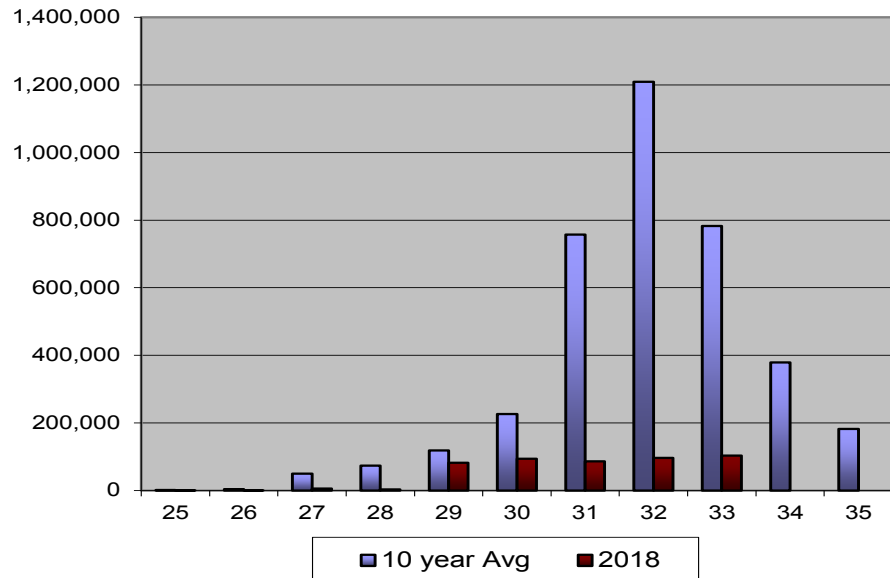
**District 2 Purse Seine Weekly Harvest
10 year avg vs 2018 -sockeye**



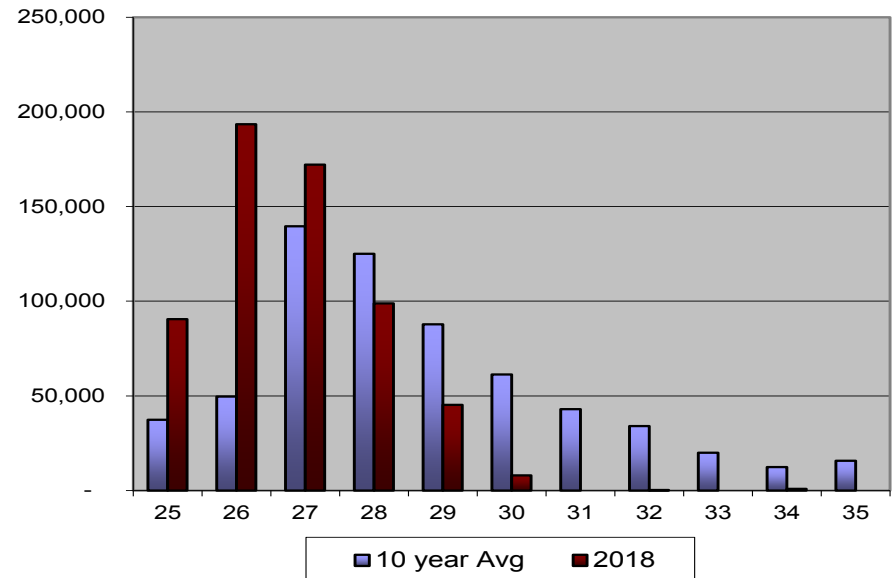
**District 2 Purse Seine Weekly Harvest
10 year avg vs 2018 -coho**



**District 2 Purse Seine Weekly Harvest
10 year avg vs 2018 -pink**



**District 2 Purse Seine Weekly Harvest
10 year avg vs 2018 -chum**



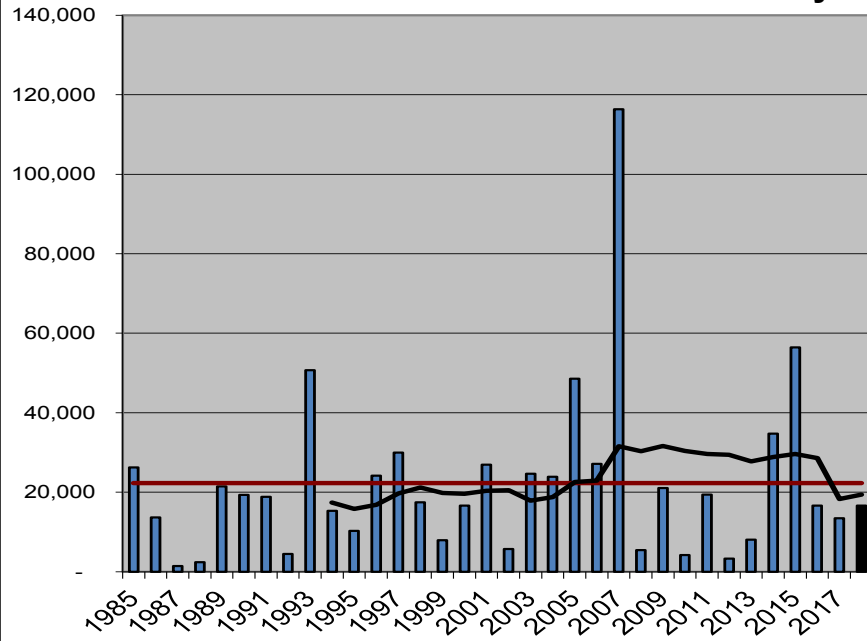
2018 District 3 Purse Seine – Harvest by Opening

2018 District 3 Purse Seine

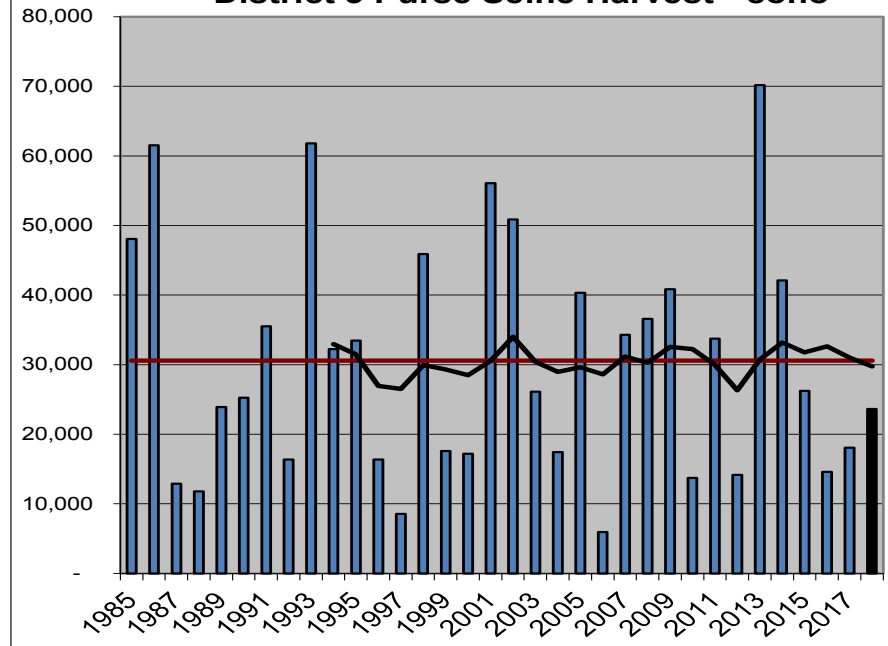
Opening	Chinook					Boats	Hours
	>28"	Sockeye	Coho	Pink	Chum		
30 & 30B	0	1,120	1,294	20,770	3,048	8	30
31	0	575	1,475	33,173	2,201	7	15
31B	0	2,285	2,519	159,258	5,851	27	15
32	0	2,083	4,081	161,418	11,445	34	15
32B	0	2,793	6,202	364,851	17,657	50	15
33	0	1,953	3,816	344,403	19,164	61	15
33B	0	1,135	2,377	219,067	13,658	39	15
34	0	4,228	1,361	110,147	9,911	28	15
34B	0	465	518	52,629	3,197	13	15
Total	0	16,637	23,643	1,465,716	86,132	93	150

Opening 30 & 30B combined
 Confidential – less than 3 boats in 30B

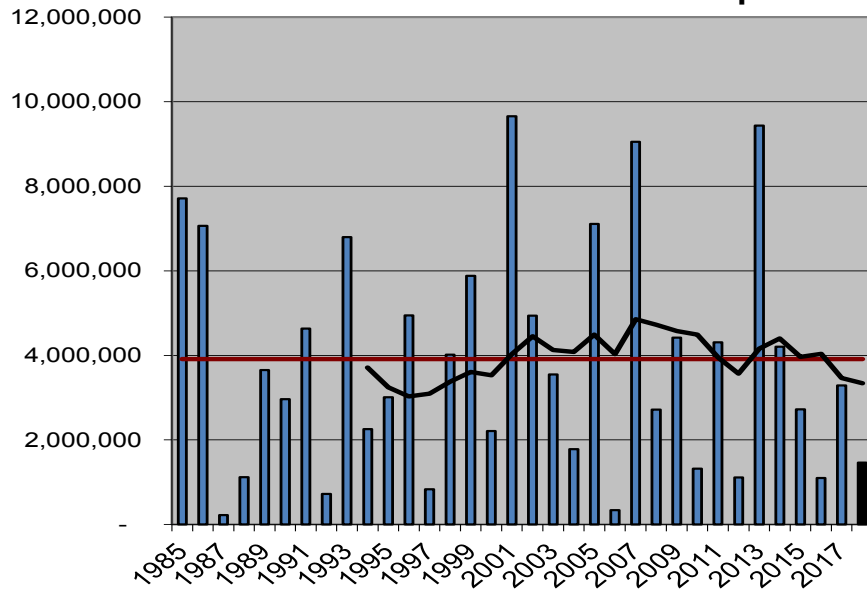
District 3 Purse Seine Harvest - sockeye



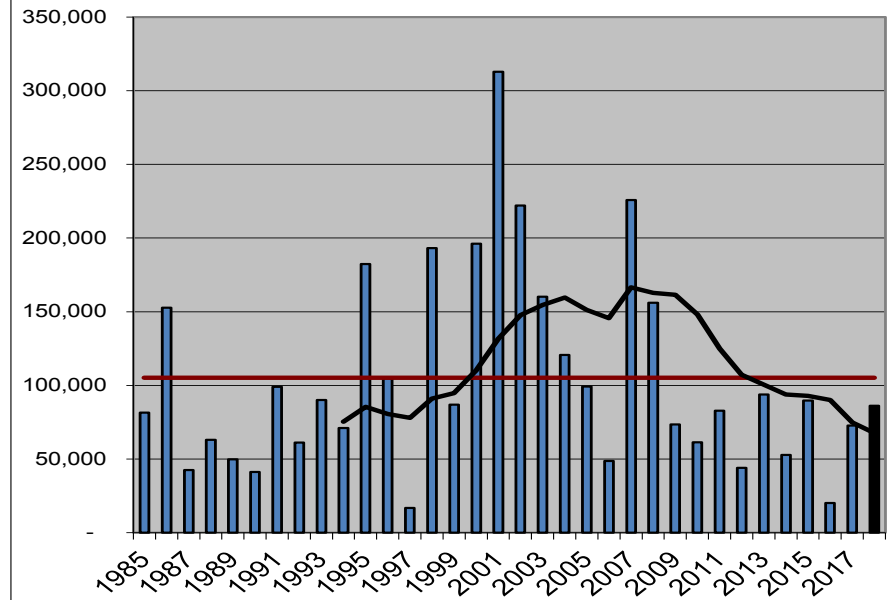
District 3 Purse Seine Harvest - coho



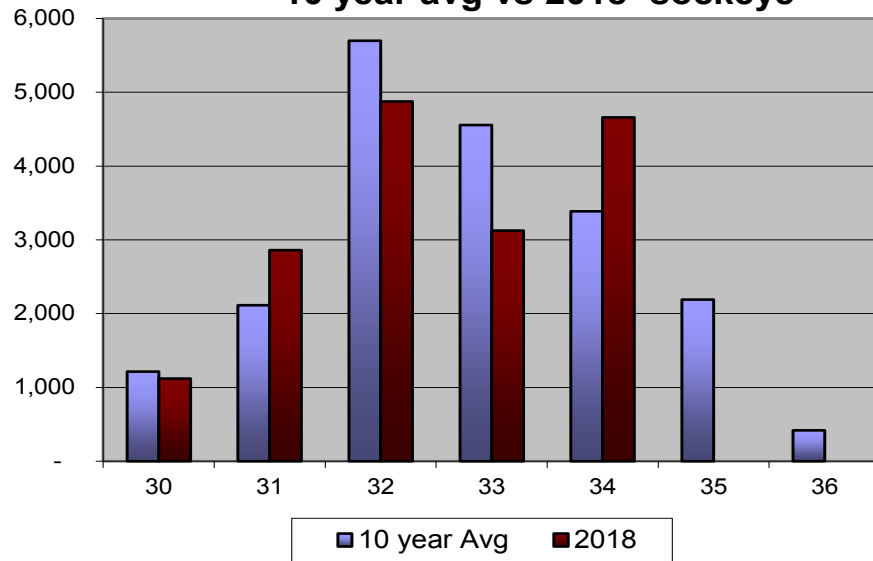
District 3 Purse Seine Harvest - pink



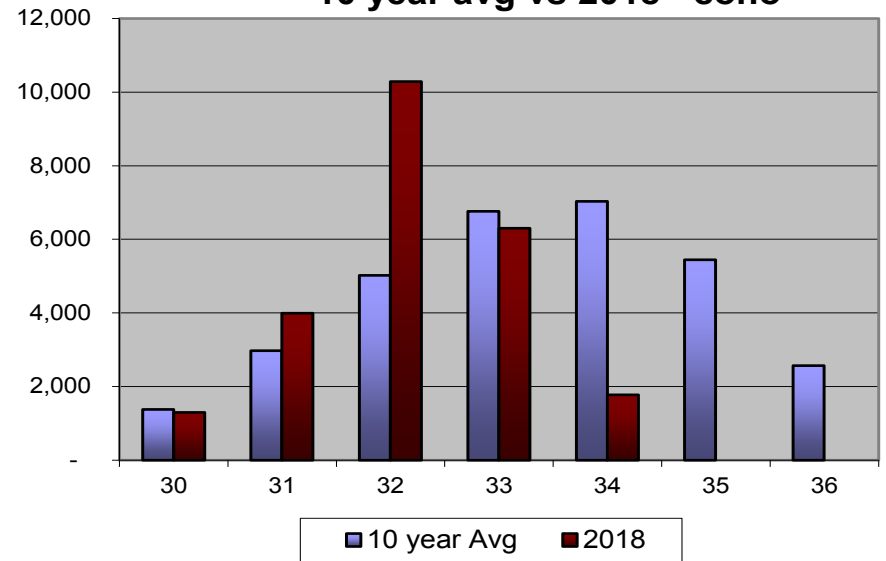
District 3 Purse Seine Harvest - chum



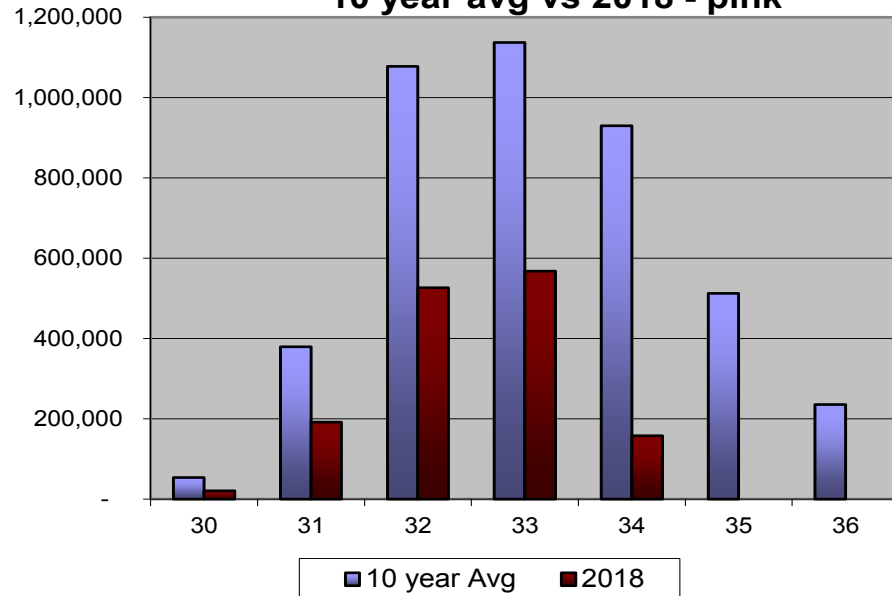
**District 3 Purse Seine Weekly Harvest
10 year avg vs 2018 - sockeye**



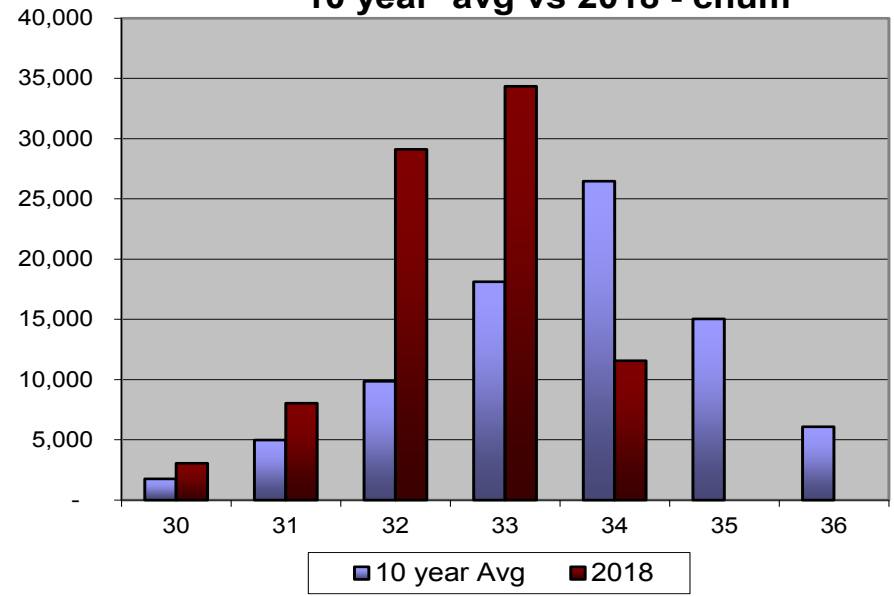
**District 3 Purse Seine Weekly Harvest
10 year avg vs 2018 - coho**



**District 3 Purse Seine Weekly Harvest
10 year avg vs 2018 - pink**



**District 3 Purse Seine Weekly Harvest
10 year avg vs 2018 - chum**



2018 District 4 Purse Seine – Harvest by Opening

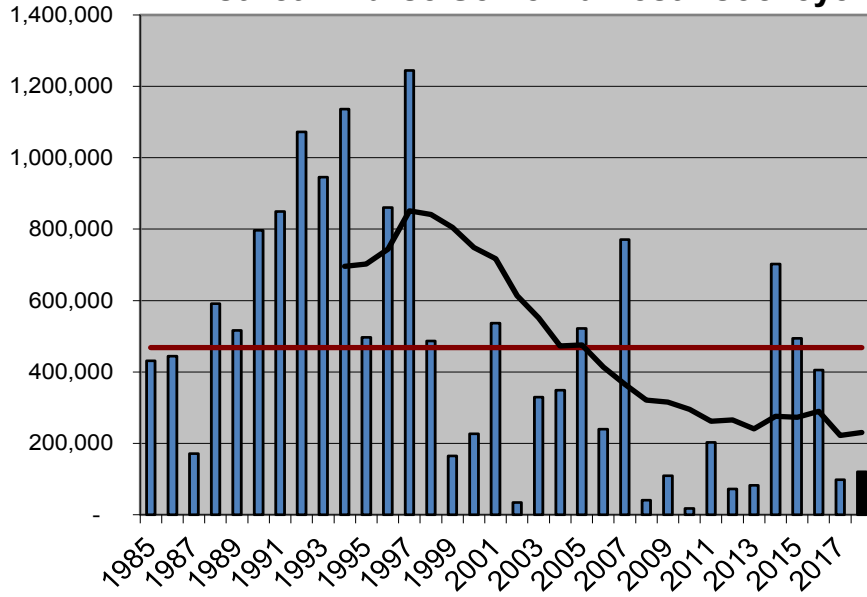
2018 District 4 Purse Seine

Treaty
Period

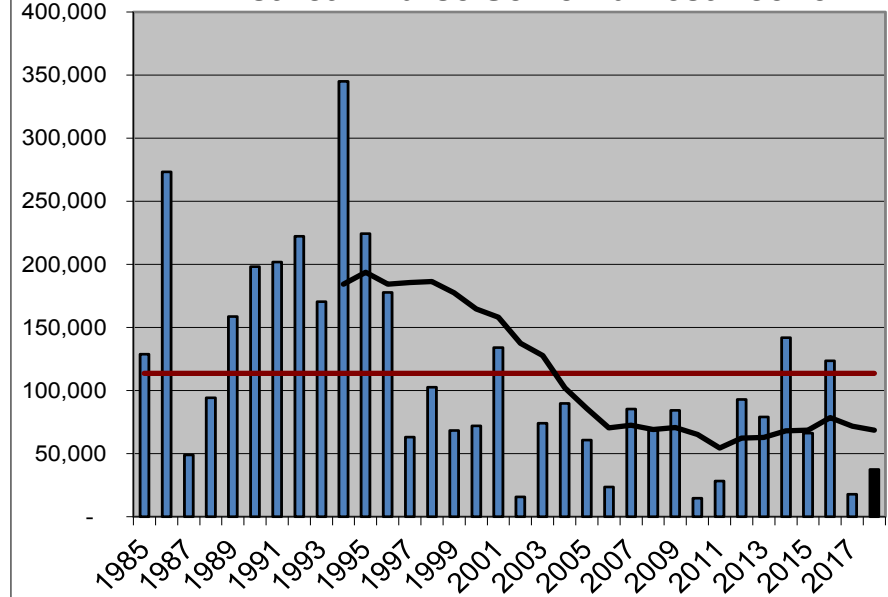
	Chinook					Boats	Hours
Opening	>28"	Sockeye	Coho	Pink	Chum		
27							
27B							
28	Did Not Open						
28B							
29	0	2,860	1,661	25,777	6,615	31	8
29B	0	4,698	2,047	31,085	6,272	10	10
30	0	6,833	2,253	74,338	11,411	22	15
30B	0	5,352	7,817	127,090	15,322	36	15
31	0	1,252	1,532	38,504	3,124	20	15
31B	0	2,506	2,887	96,272	9,634	33	15
32	0	7,119	5,344	137,126	14,931	27	15
32B	0	3,651	2,566	109,448	9,567	23	15
33	0	1,949	614	32,483	3,930	9	15
33B	0	8,608	1,744	43,340	8,864	12	15
34	0	43,329	4,868	47,303	12,187	27	15
34B	0	33,208	4,178	26,786	12,939	45	15
Total	0	121,365	37,472	789,435	114,796	85	168

- Pre-week 31 sockeye catch = 19,743 – ranked 26 of 34 since 1985 (Avg. = 97,600)
- D4 was open for 48 hours out of a potential 120 hours during the treaty period. Avg. hours is 57.

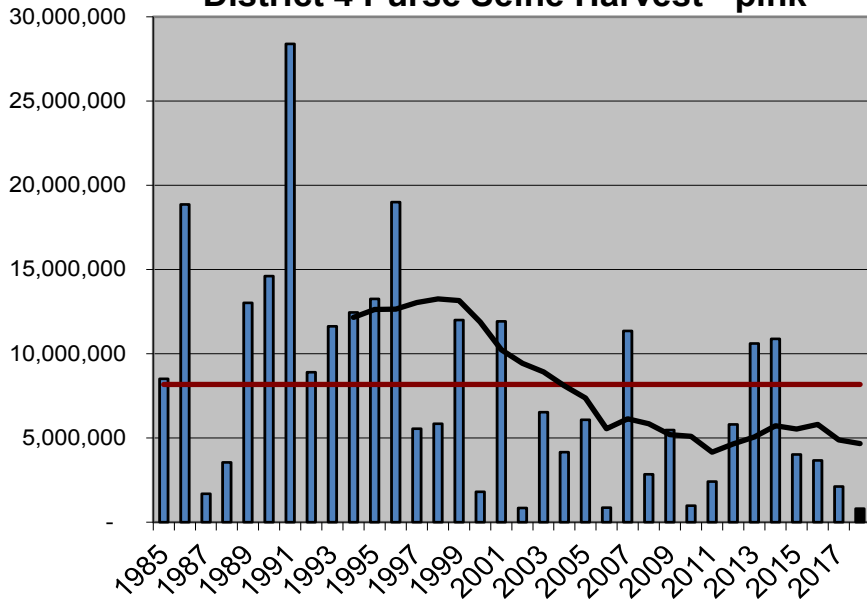
District 4 Purse Seine Harvest - sockeye



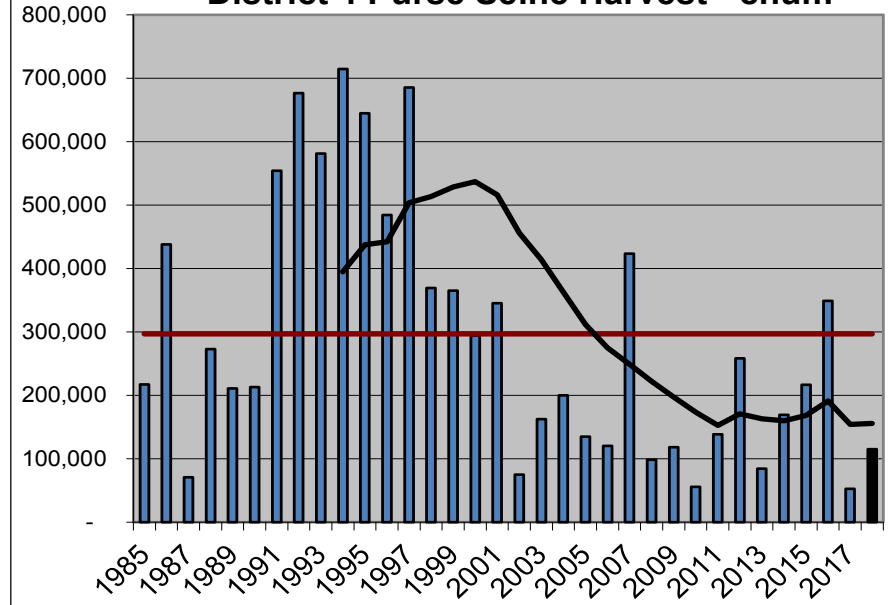
District 4 Purse Seine Harvest - coho



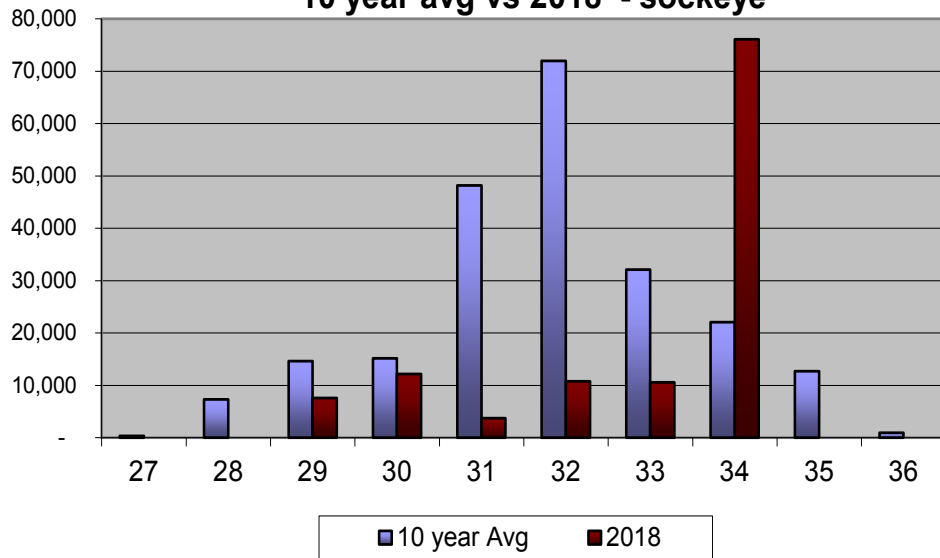
District 4 Purse Seine Harvest - pink



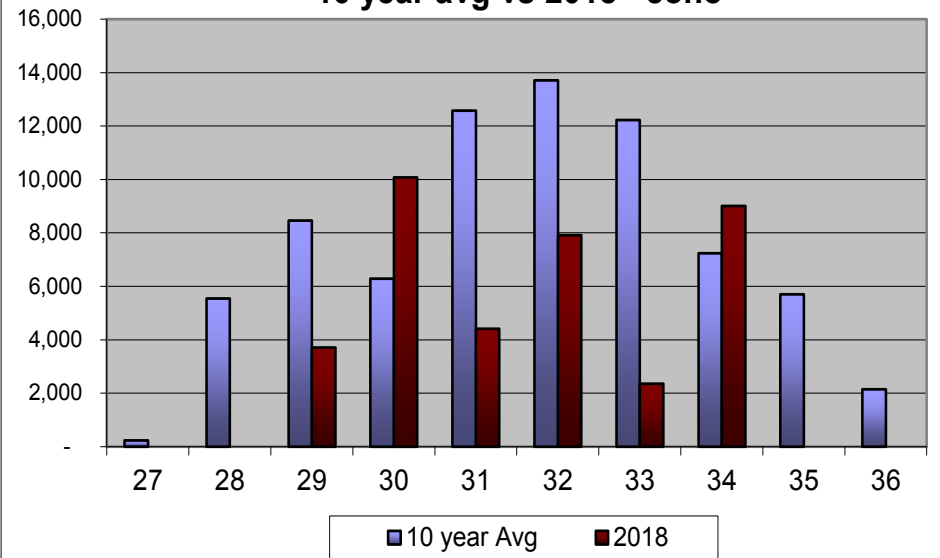
District 4 Purse Seine Harvest - chum



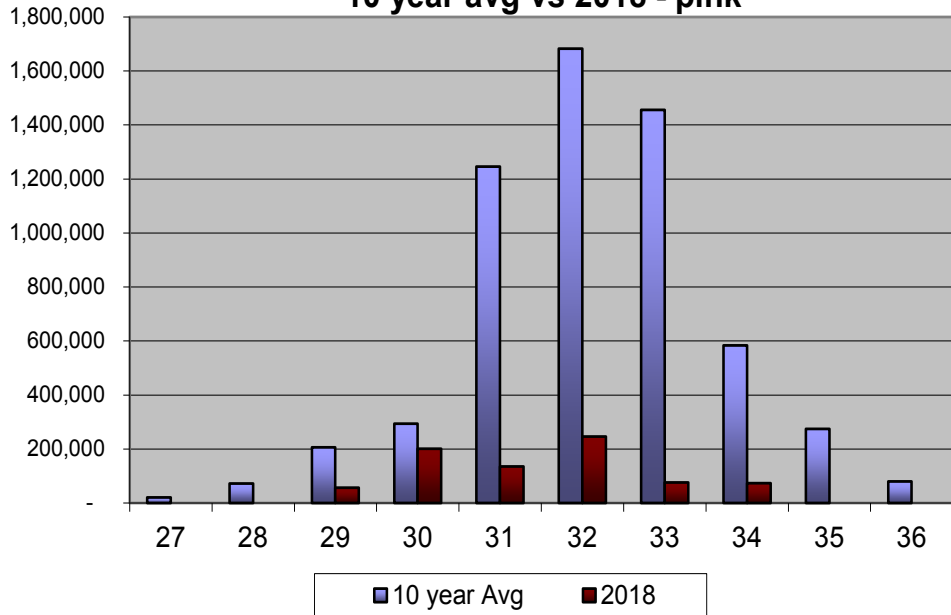
**District 4 Purse Seine Weekly Harvest
10 year avg vs 2018 - sockeye**



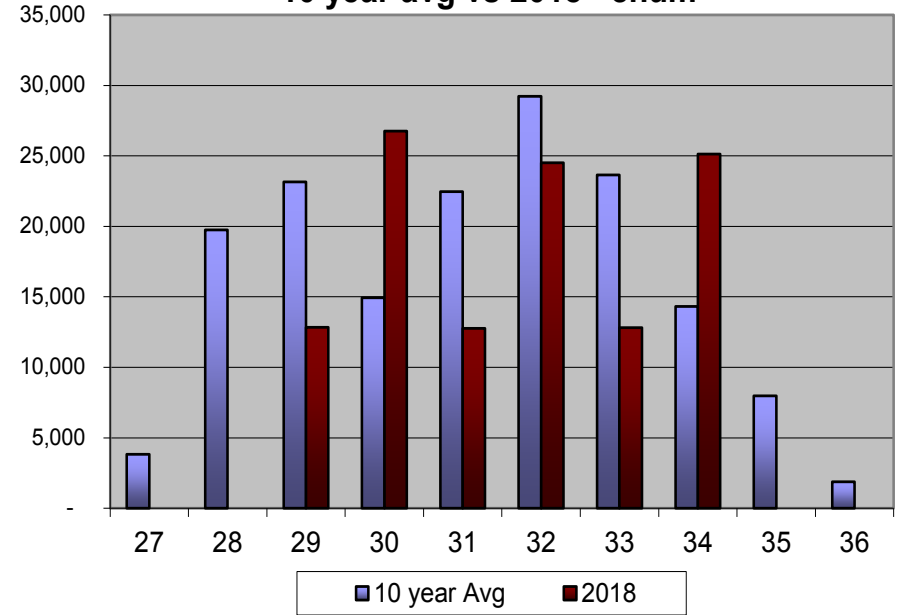
**District 4 Purse Seine Weekly Harvest
10 year avg vs 2018 - coho**



**District 4 Purse Seine Weekly Harvest
10 year avg vs 2018 - pink**



**District 4 Purse Seine Weekly Harvest
10 year avg vs 2018 - chum**



District 104 – Purse Seine

Fishery Performance, 2018 (preliminary)

11-8-18

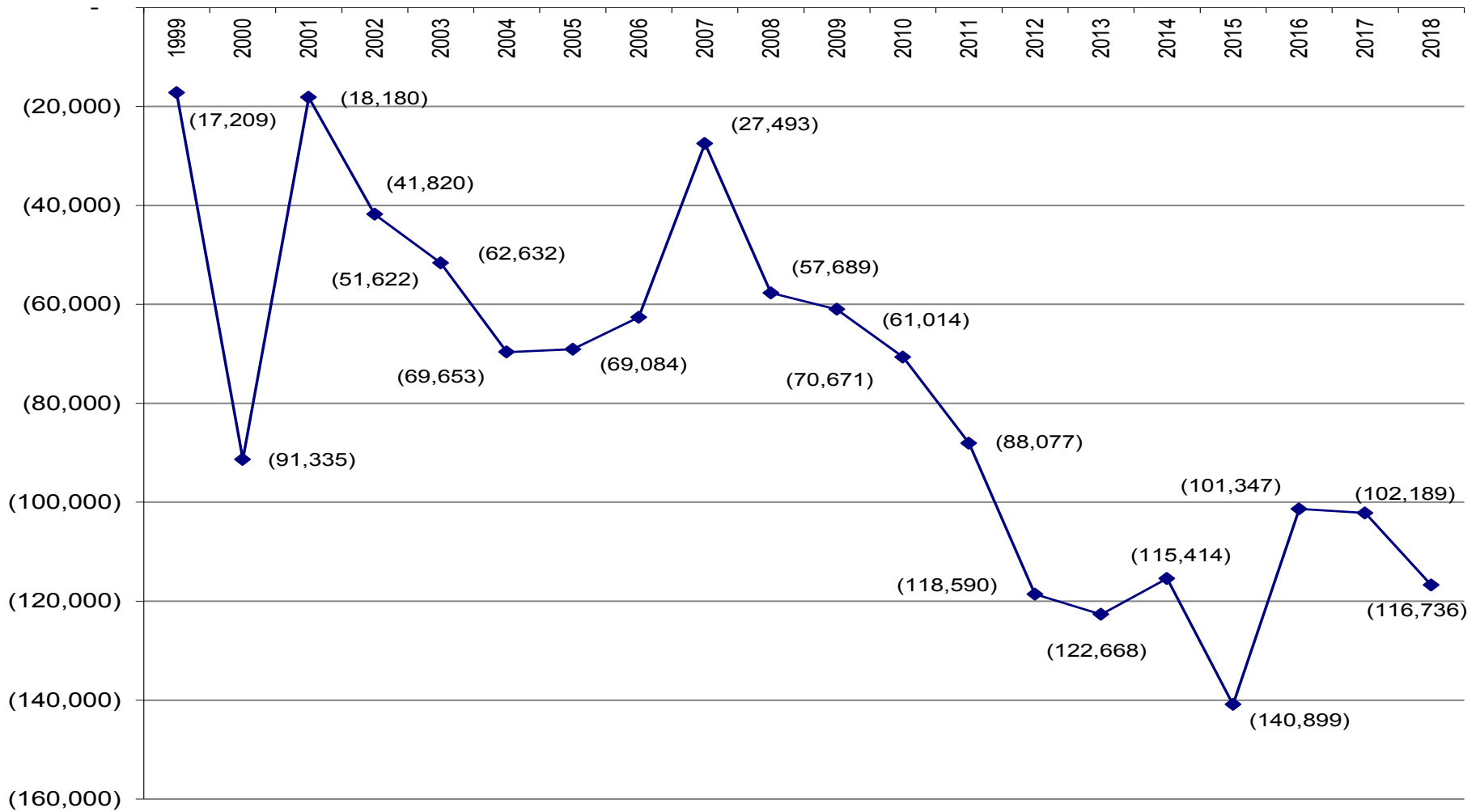
	Nass/Skeena Total Return	Nass/Skeena Escapement	Allowable Nass/Skeena AAH	Allowable D4 Harvest (2.45%)	Total Pre- Week 31 Sockeye Harvest	Actual Nass/Skeena Harvest	Overage/ Underage Per Year	Cumulative overage / (underage)
1999	1,771,048	936,705	834,343	20,441	7,664	3,232	(17,209)	(17,209)
2000	5,318,227	1,100,000	4,218,227	103,347	48,969	29,221	(74,126)	(91,335)
2001	4,965,286	1,100,000	3,865,286	94,700	203,090	167,854	73,154	(18,180)
2002	2,776,504	1,051,335	1,725,169	42,267	26,554	18,627	(23,640)	(41,820)
2003	3,306,526	1,100,000	2,206,526	54,060	84,742	44,258	(9,802)	(51,622)
2004	2,620,994	1,100,000	1,520,994	37,264	30,758	19,233	(18,031)	(69,653)
2005	1,770,472	1,000,142	770,330	18,873	35,690	19,442	569	(69,084)
2006	3,650,525	1,100,000	2,550,525	62,488	89,615	68,940	6,452	(62,632)
2007	2,752,076	1,100,000	1,652,076	40,476	112,135	75,615	35,139	(27,493)
2008	2,531,703	1,100,000	1,431,703	35,077	6,262	4,880	(30,197)	(57,689)
2009	1,602,960	1,053,859	549,101	13,453	15,971	10,128	(3,325)	(61,014)
2010	1,395,619	956,957	438,662	10,747	4,612	1,091	(9,656)	(70,671)
2011	2,487,985	1,100,000	1,387,985	34,006	25,280	16,599	(17,407)	(88,077)
2012	2,737,168	1,100,000	1,637,168	40,111	18,300	9,598	(30,513)	(118,590)
2013	981,476	642,461	339,015	8,306	13,102	4,228	(4,078)	(122,668)
2014	3,824,537	1,100,000	2,724,537	66,751	114,375	74,005	7,254	(115,414)
2015	3,015,042	1,100,000	1,915,042	46,919	43,873	21,433	(25,486)	(140,899)
2016	2,140,259	1,100,000	1,040,259	25,486	110,346	65,039	39,553	(101,347)
2017	1,416,653	1,100,000	316,653	7,758	12,036	6,916	(842)	(102,189)
2018	2,100,000	1,100,000	1,000,000	24,500	19,743	9,953	(14,547)	(116,736)

2018 pre-season AAH = approx. 8,000

Final AAH = approx. 19,600 ²²

District 104 – Purse Seine

104-PS - Cumulative Overage/Underage



New Northern Boundary Treaty Language for 2019 Pertinent to D4 seine:

- Federal Funding. Previous versions failed to identify funding.
- Treaty extended through 2028, unless both parties agree that modifications are required, than a five year review.
- Establishes in treaty language what is already being done with regards to Canada providing the pre-season run forecast for both the Nass and Skeena rivers.
- Review of D4 pink salmon fishery.
 - New agreement stipulates the U.S. will complete a review that evaluates long-term changes in abundance of pink salmon stocks; changes in timing, location of harvest, impacts of pink harvest on Nass/Skeena sockeye, and efficacy (if any) of assessing pink salmon run timing through D4 using available data.
- Establishes in the treaty what was done in 2017 and 2018 with regards to low pre-season forecasts, specifically:
 - Expected total run is below 900,000 sockeye salmon. At this level, there are no Canadian commercial marine harvests. The United States shall undertake measures to reduce the impact of the D104 purse seine fishery, which may include delaying the start date and duration of the fishery.
 - Expected total run is below 600,000 sockeye salmon. At this level, there are no Canadian marine or in-river commercial harvests with the exception of terminal fisheries adjacent to enhancement spawning channels. The United States shall undertake additional measures to reduce the impact of the D104 purse seine fishery, which may include delaying the start date and duration of the fishery, and/or reducing the fishing area.
- Review of current run reconstruction model. Less complex model with the accuracy of genetic stock id.

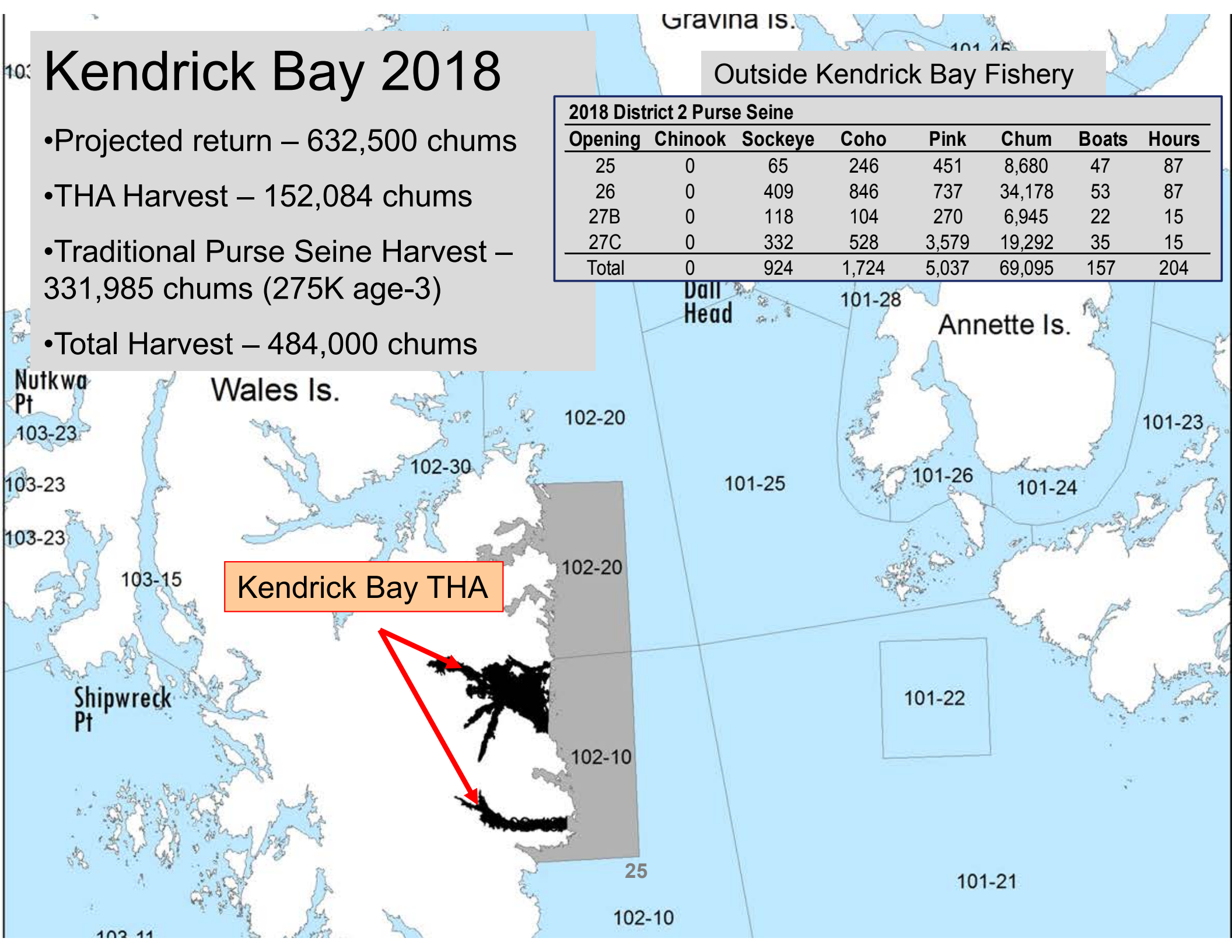
Kendrick Bay 2018

- Projected return – 632,500 chums
- THA Harvest – 152,084 chums
- Traditional Purse Seine Harvest – 331,985 chums (275K age-3)
- Total Harvest – 484,000 chums

Outside Kendrick Bay Fishery

2018 District 2 Purse Seine

Opening	Chinook	Sockeye	Coho	Pink	Chum	Boats	Hours
25	0	65	246	451	8,680	47	87
26	0	409	846	737	34,178	53	87
27B	0	118	104	270	6,945	22	15
27C	0	332	528	3,579	19,292	35	15
Total	0	924	1,724	5,037	69,095	157	204



District 102 Fall Fishing

Peak Cholmondeley Sound
Chum Index counts
Total = 70,000

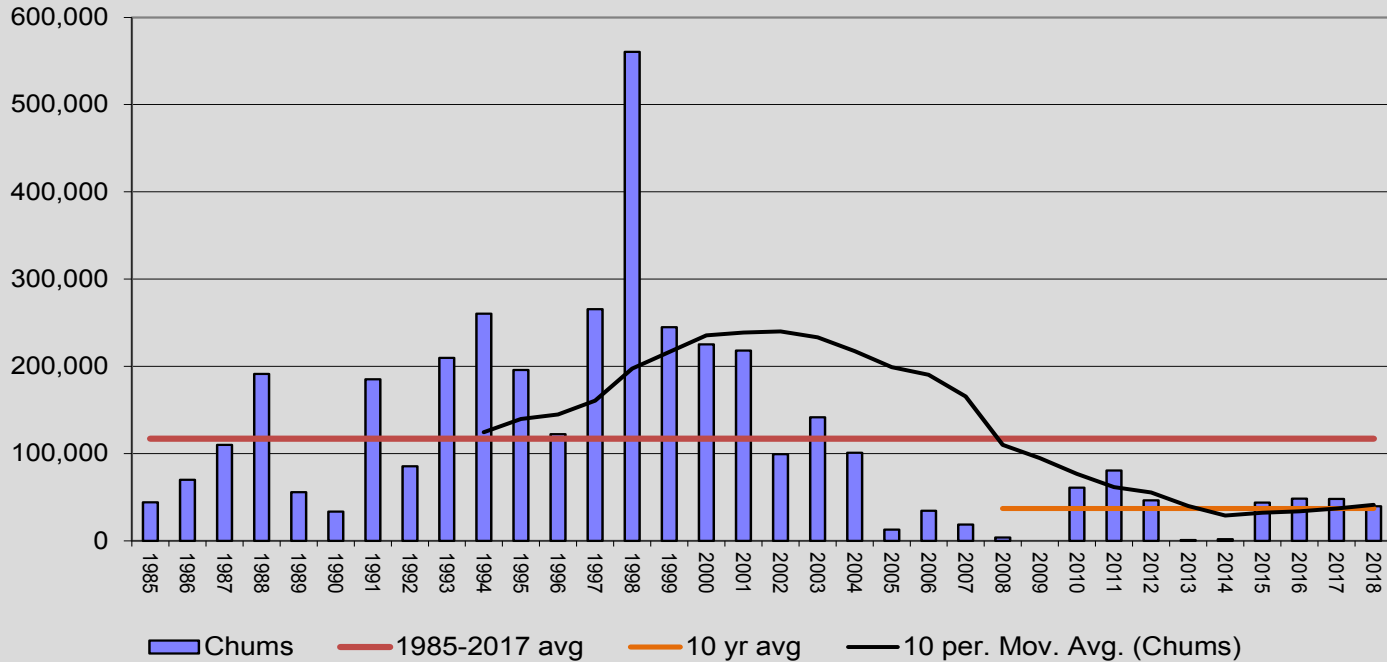
Disappearance – 26,000
Lagoon – 44,000

2018 District 2 Purse Seine

Opening	Chinook	Sockeye	Coho	Pink	Chum	Boats	Hours
36	0	49	104	2,689	26,302	7	12
37	0	27	368	343	13,369	30	12
Total	0	76	472	3,032	39,671	37	24

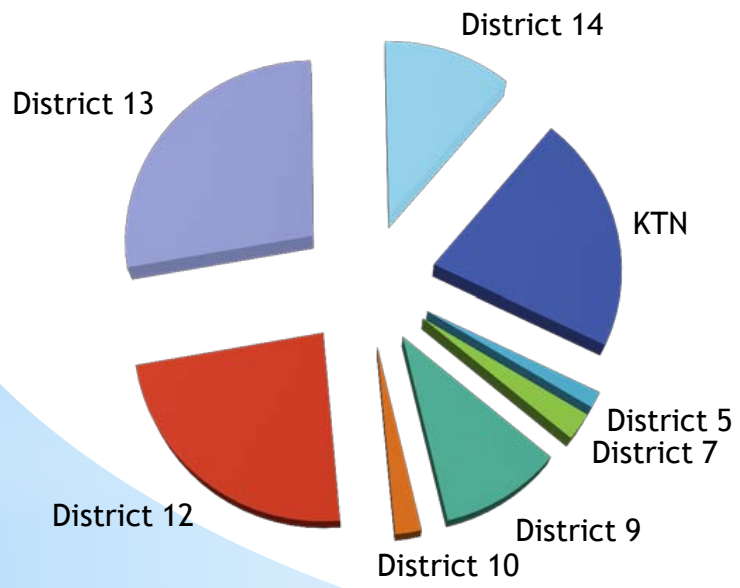


**District 2 Fall Chum Harvest
All of District 2 - 1985 to 2018**



2019 Expectations?

Pink Salmon Harvest in 2017

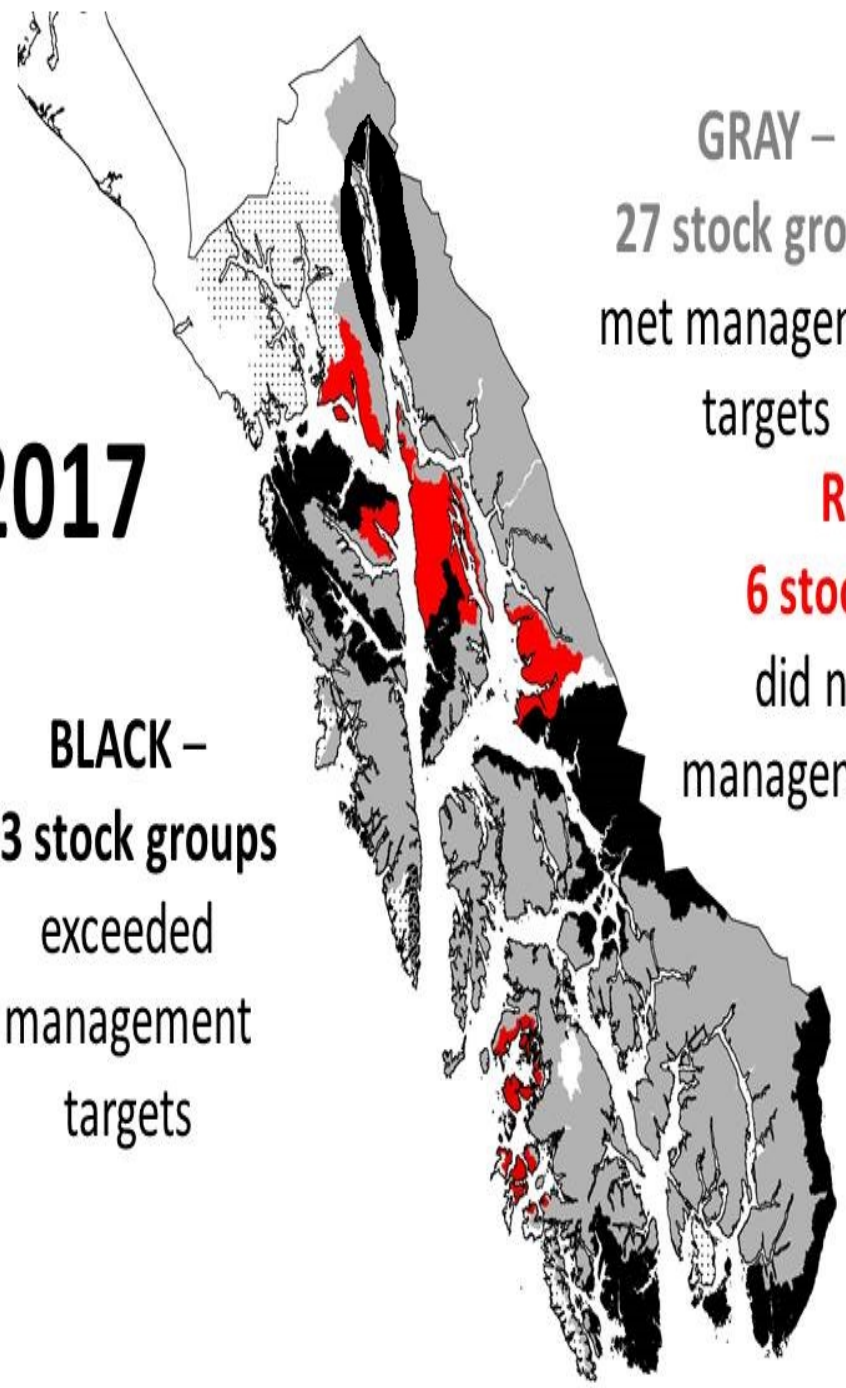


2017

BLACK –
13 stock groups
exceeded
management
targets

GRAY –
27 stock groups
met management
targets

RED –
6 stock group
did not meet
management targets



THE CURSE OF THE RETIREING KETCHIKAN AMB. IS IT REAL??

