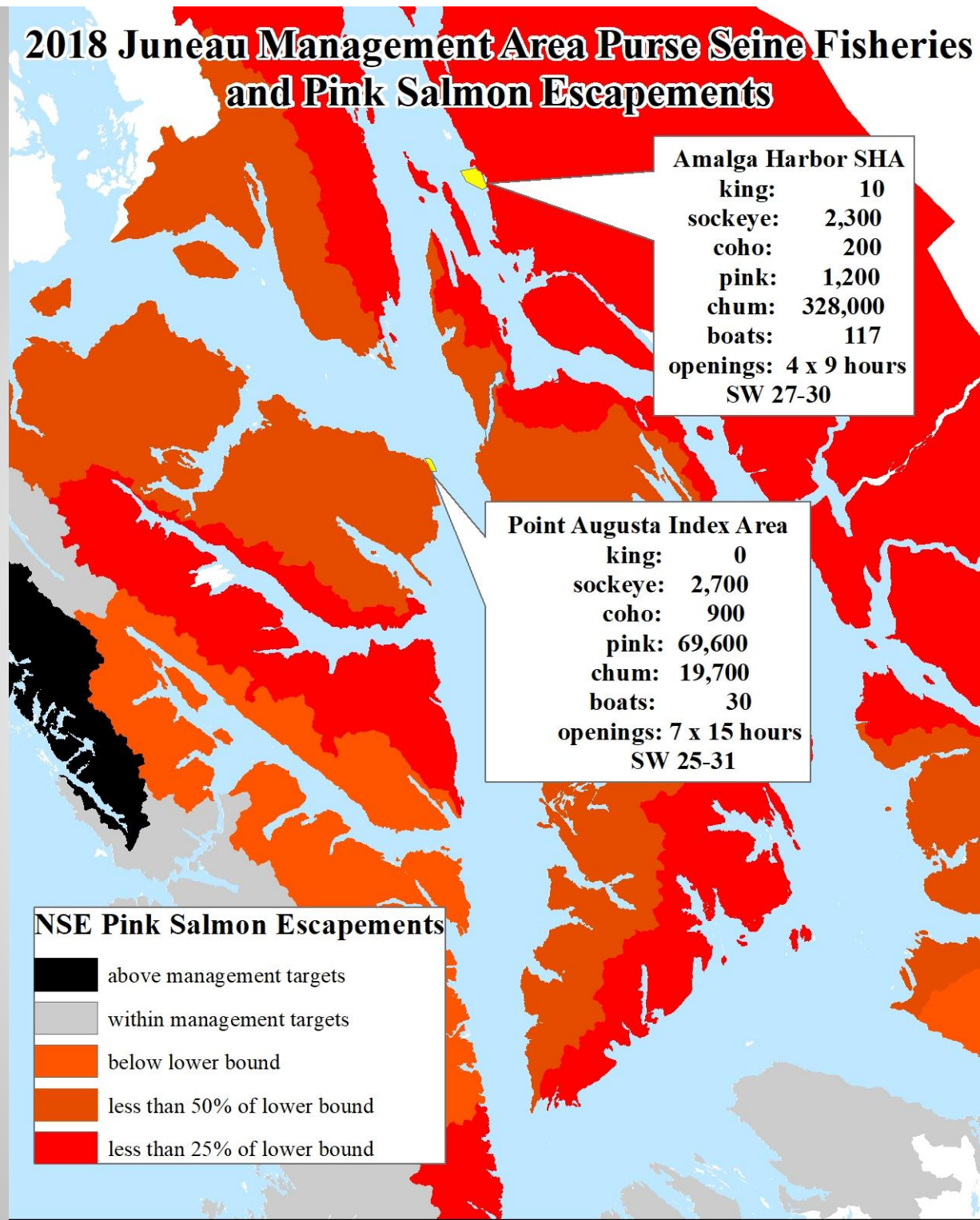


# 2018 Juneau Area Purse Seine



**Dave Harris  
Juneau AMB  
Purse Seine Task Force  
November 28, 2018**

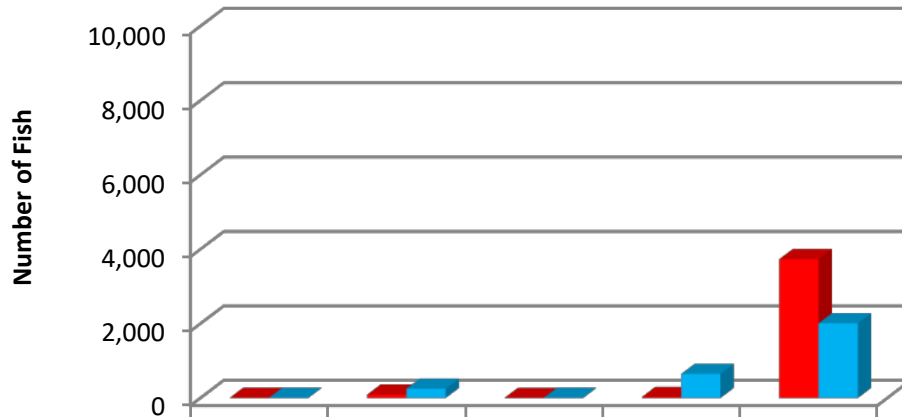
# 2018 Juneau Management Area Purse Seine Fisheries and Pink Salmon Escapements



# Hawk Inlet Test Fishery

**June 29, 2018 SW 26**

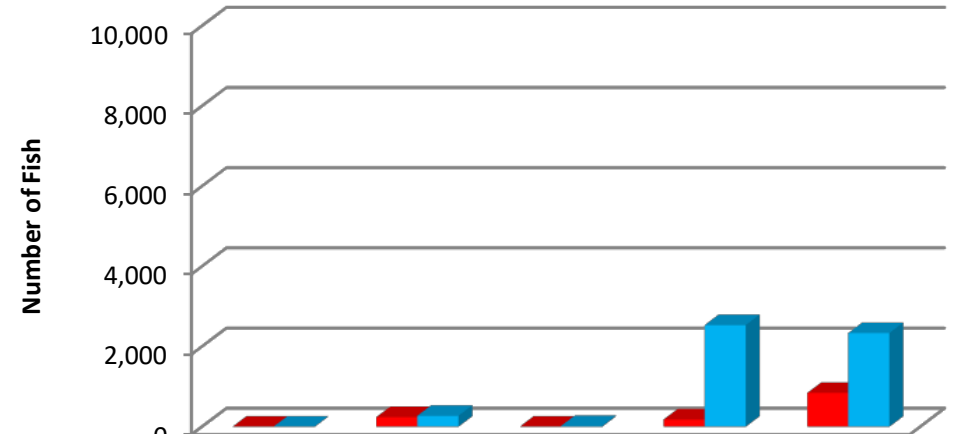
■ 2018 ■ 10-Year Average



	Chinook	Sockeye	Coho	Pink	Chum
■ 2018	8	92	3	26	3,735
■ 10-Year Average	7	249	6	645	2,009

**July 6, 2018 SW 27**

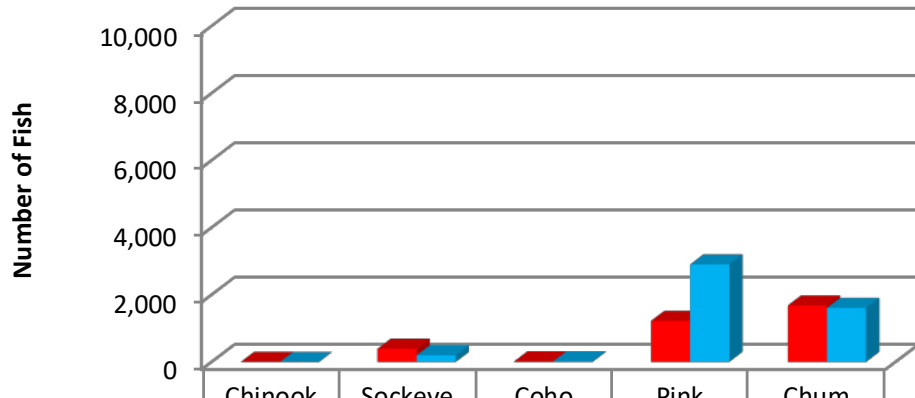
■ 2018 ■ 10-Year Average



	Chinook	Sockeye	Coho	Pink	Chum
■ 2018	2	239	3	178	843
■ 10-Year Average	3	272	19	2,534	2,335

**July 13, 2018 SW 28**

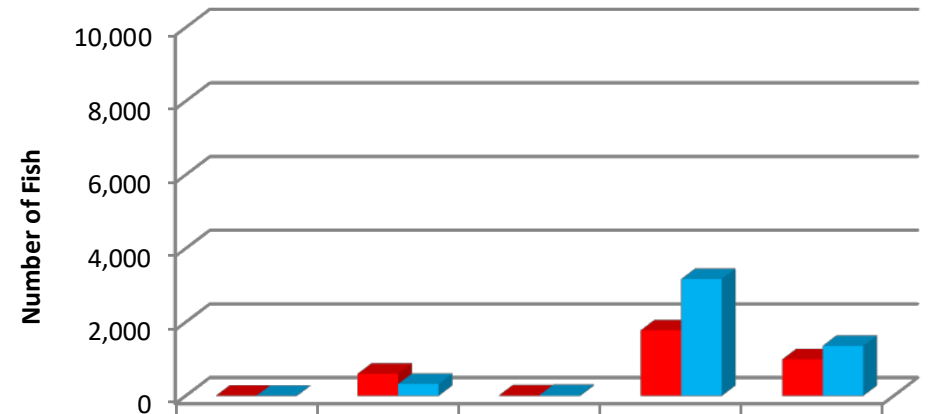
■ 2018 ■ 10-Year Average



	Chinook	Sockeye	Coho	Pink	Chum
■ 2018	4	395	22	1,225	1,683
■ 10-Year Average	1	202	22	2,905	1,610

**July 20, 2018 SW 29**

■ 2018 ■ 10-Year Average



	Chinook	Sockeye	Coho	Pink	Chum
■ 2018	3	600	13	1,780	990
■ 10-Year Average	1	322	25	3,170	1,356

## 2018 Amalga Harbor SHA fisheries

SW	chinook	sockeye	coho	pink	chum	boats
27	0	514	45	85	90,311	89
28	10	841	43	437	119,420	81
29	0	917	101	610	111,343	74
30	0	28	4	55	7,167	21
	10	2,300	193	1,187	328,241	117

	Chinook	sockeye	coho	pink	chum	boats
2012	32	4,015	137	4,677	411,397	96
2013	144	4,429	162	33,557	1,081,913	105
2014	28	1,440	132	860	227,048	101
2015	18	912	208	41,731	222,594	57
2016	49	2,684	130	2,367	252,496	44
2017	103	2,689	554	79,390	513,689	99
2018	10	2,300	193	1,187	328,241	117
2012-17 avg	62	2,695	221	27,097	451,523	84

## **2019 Juneau Management Area Expectations Uncertain:**

**Parent year pink salmon escapements mixed:**

- Weak escapements for early-run Seymour Canal and Mainland D10, and late-run Homeshore and W Admiralty stock groups;**
- Good to excellent escapements for middle-run stock groups;**

**Very poor results from 2018 NOAA SECM survey**

**Initial openings at Pt. Augusta and Tenakee Inlet June 16**

**Amalga Harbor SHA openings in July dependent on enhanced chum salmon run strength and progress towards DIPAC cost recovery goals**