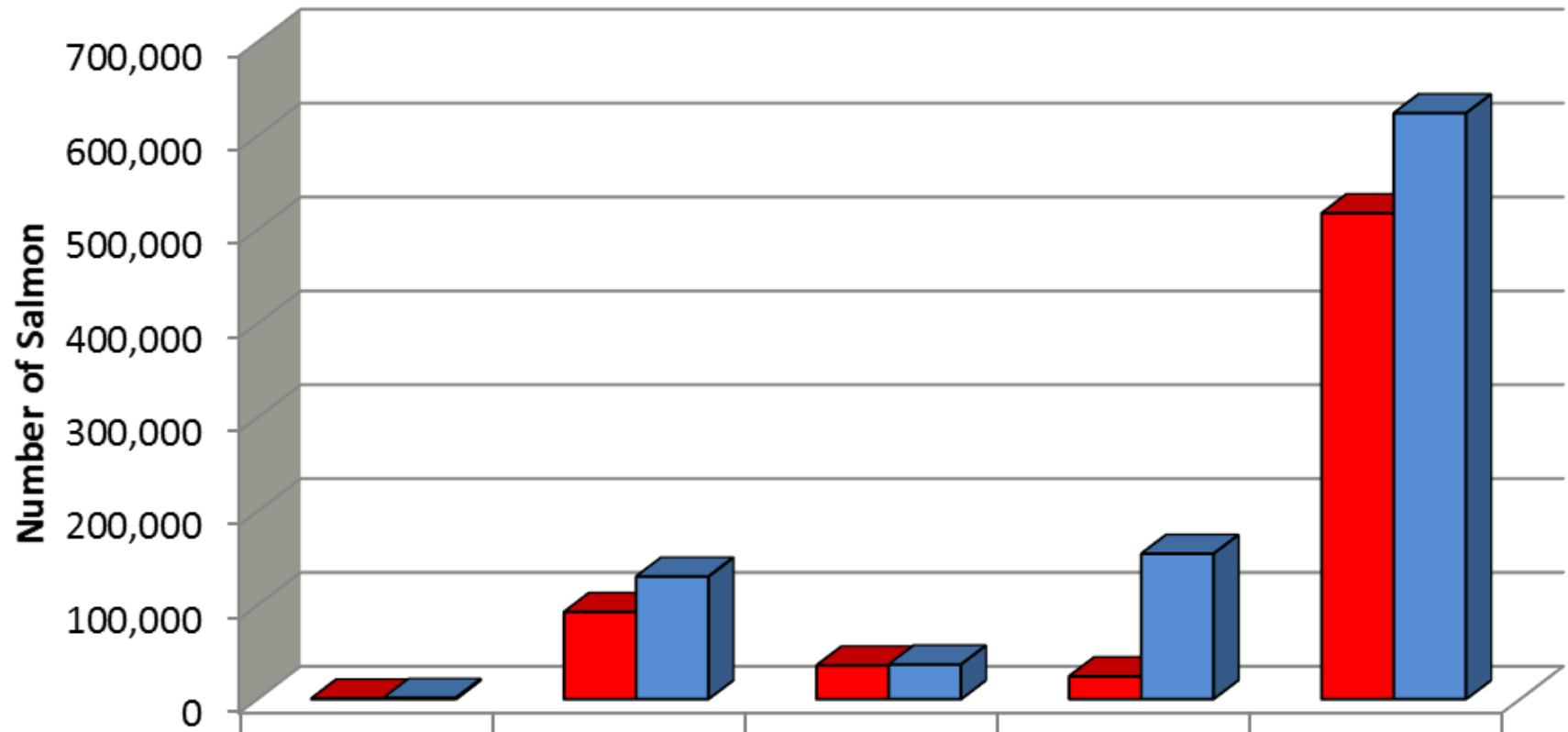


# 2018 DISTRICT I I DRIFT GILLNET FISHERY TAKU INLET, STEPHENS PASSAGE, AND PORT SNETTISHAM

*Scott Forbes  
Juneau Assistant AMB  
Gillnet Task Force Meeting  
November 27, 2018  
Petersburg, AK*

## 2018 District 11 Gillnet Harvest and 10-year Average



	Chinook	sockeye	coho	pink	chum
■ 2018	783	92,889	35,930	24,300	517,812
■ 10-year Average*	1,452	130,616	36,912	154,839	624,301

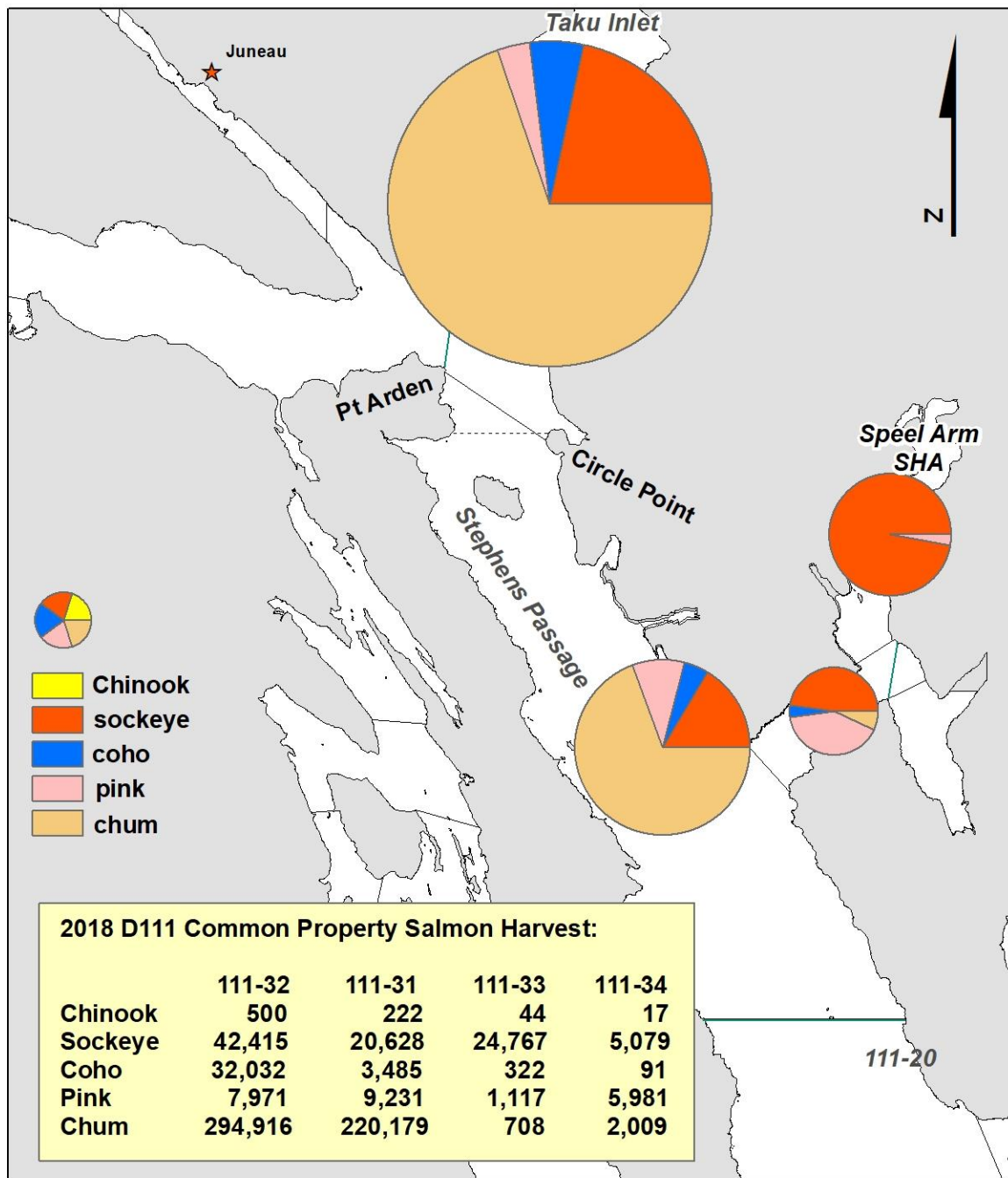
\*from SW25-42

## 2018 District 11 Common Property Commercial Drift Gillnet Effort and Harvest

	<u>Stat Week</u>	<u>Days Open</u>	<u>Boats</u>	<u>Boat Days</u>	<u>Chinook</u>	<u>Sockeye</u>	<u>Coho</u>	<u>Pink</u>	<u>Chum</u>
Sockeye Management	25	2	28	56	66	244	6	0	16,777
	26	2	64	128	89	1,100	8	0	39,971
	27	2	119	238	96	1,721	19	9	115,954
	28	3	154	462	133	6,208	53	404	160,306
	29	4	150	600	96	17,058	376	2,121	104,783
	30	4	123	492	108	18,588	1,724	6,113	48,844
	31	4	75	300	96	9,934	1,775	9,802	20,668
	32	4	79	506	56	19,124	1,599	5,298	7,696
Coho Management	33	3	37	173	11	11,718	792	483	1,130
	34	3	36	161	18	5,586	3,289	68	898
	35	3	25	86	5	1,377	4,484	2	319
	36	4	35	143	4	196	12,271	0	354
	37	3	34	102	5	31	6,633	0	79
	38	2	28	56	0	3	2,736	0	33
	39	1	7	7	0	1	165	0	0
	40	season closed							
Fishery Total		44	221	3,510	783	92,889	35,930	24,300	517,812
2008-2017 Average*		52	194	3,134	1,452	130,616	36,912	154,839	624,301
2018 % Average		85%	114%	112%	54%	71%	97%	16%	83%

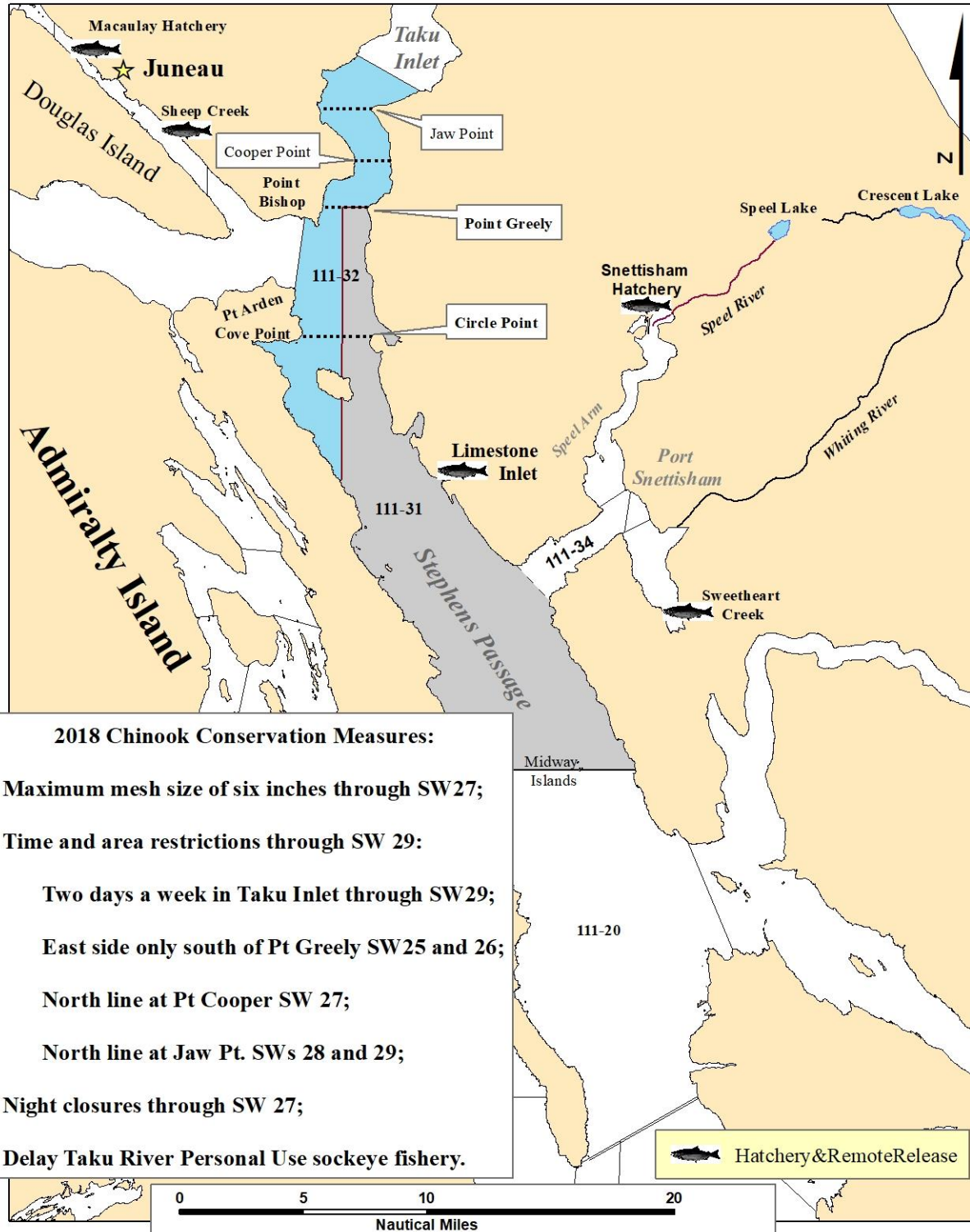
\*All averages from SW 25-42

# 2018 District 111 Drift Gillnet Harvest by Species

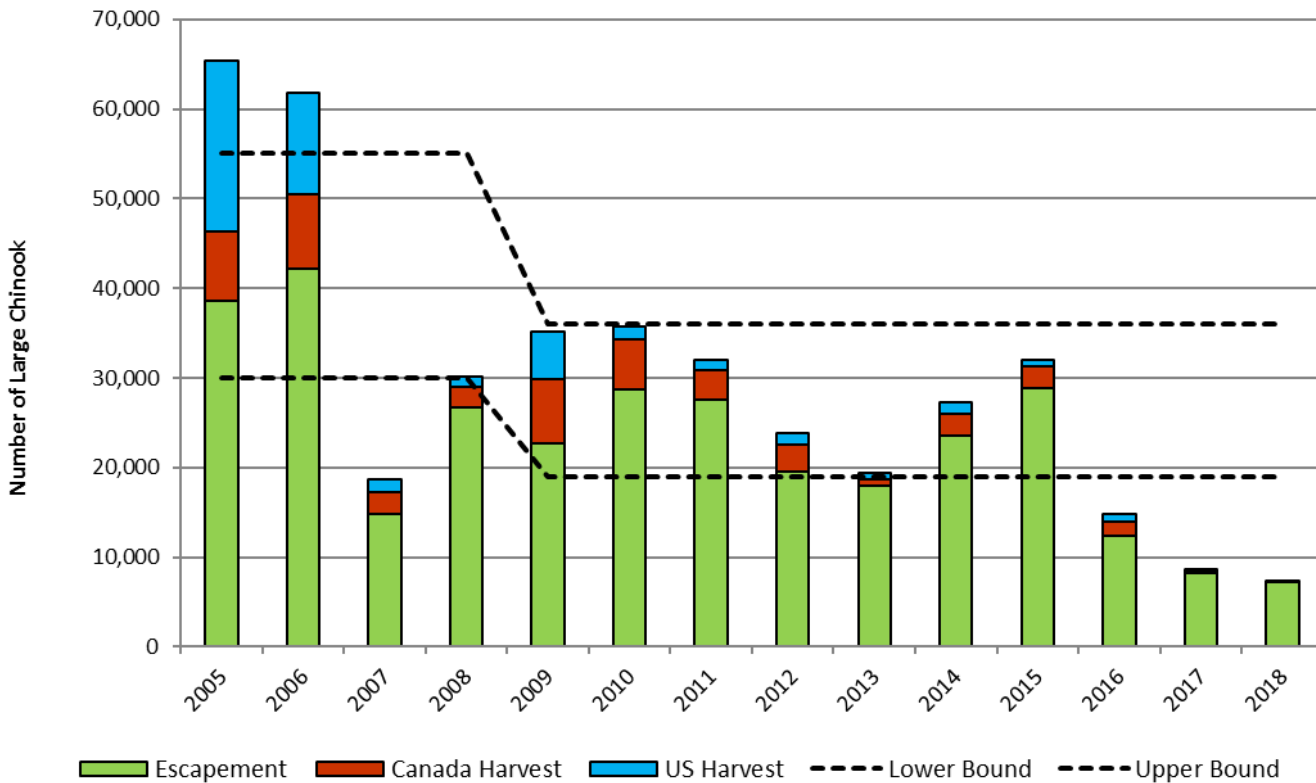




# 2018 District 111 Taku River Chinook Salmon Conservation



Taku River Large Chinook Salmon Terminal Run Size, 2005-2018



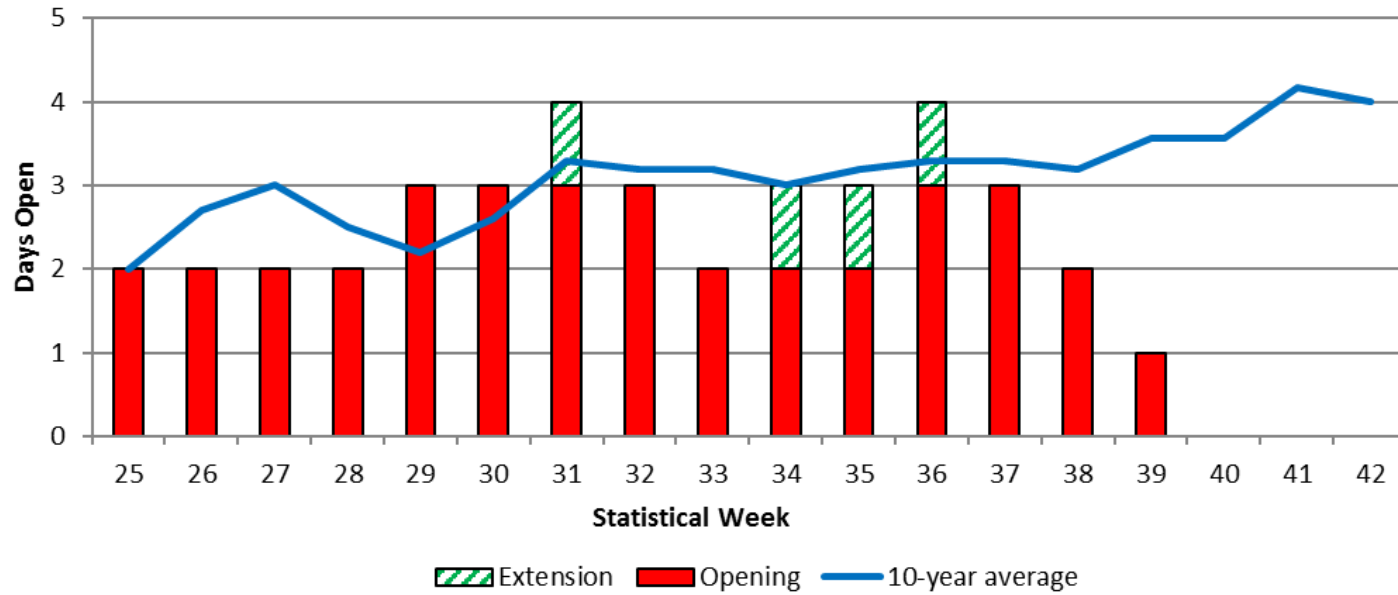
## 2018 Taku River Chinook

- Preseason forecast:  
4,700 large fish
- Escapement estimate:  
7,270 large fish
- U.S. GSI-based harvest:  
Comm + PU = 40  
Sport = 10
- Canada harvest:  
Aboriginal = 7

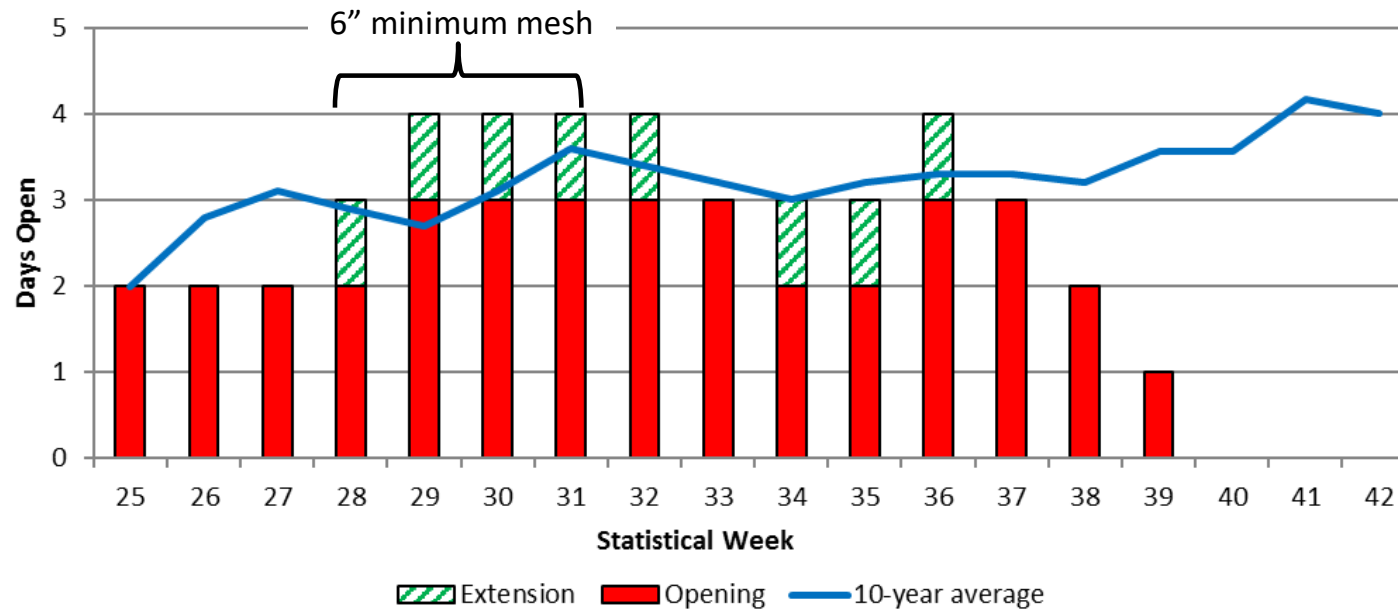
Preliminary ADF&G 2019 Taku River large Chinook salmon forecast:

Expect similar restrictions in early openings.

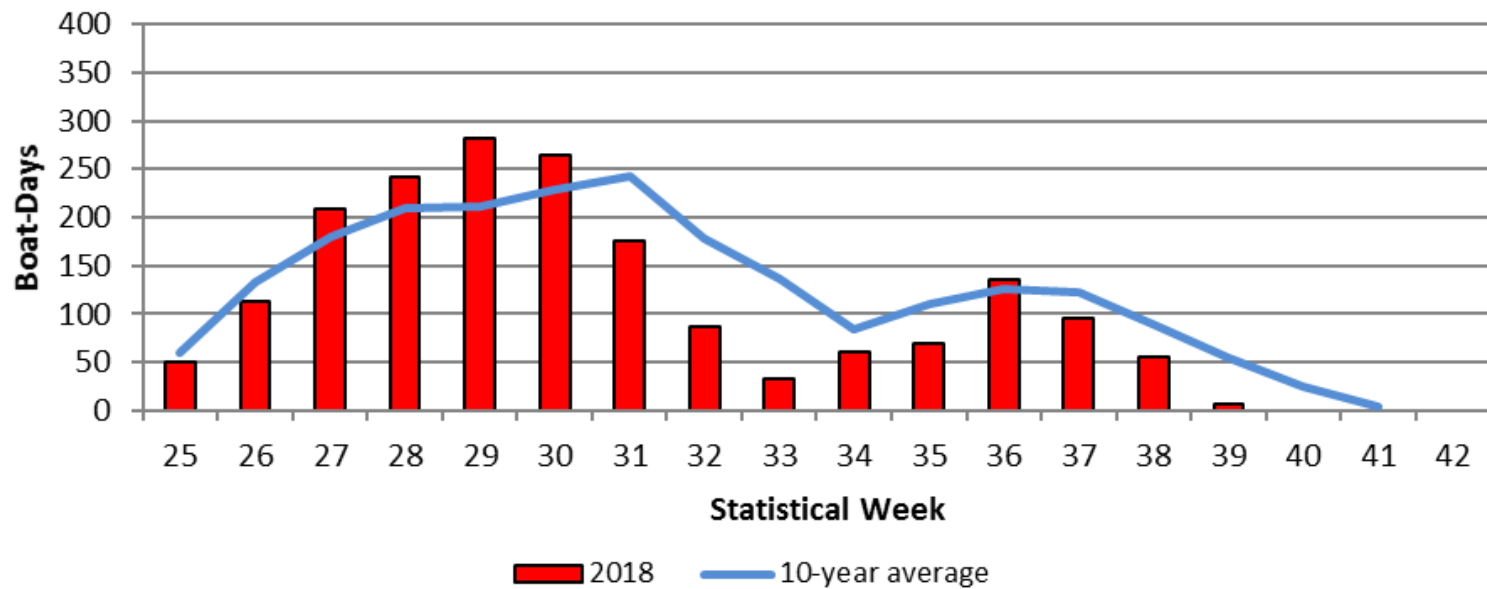
### 2018 Taku Inlet (111-32) Days Open



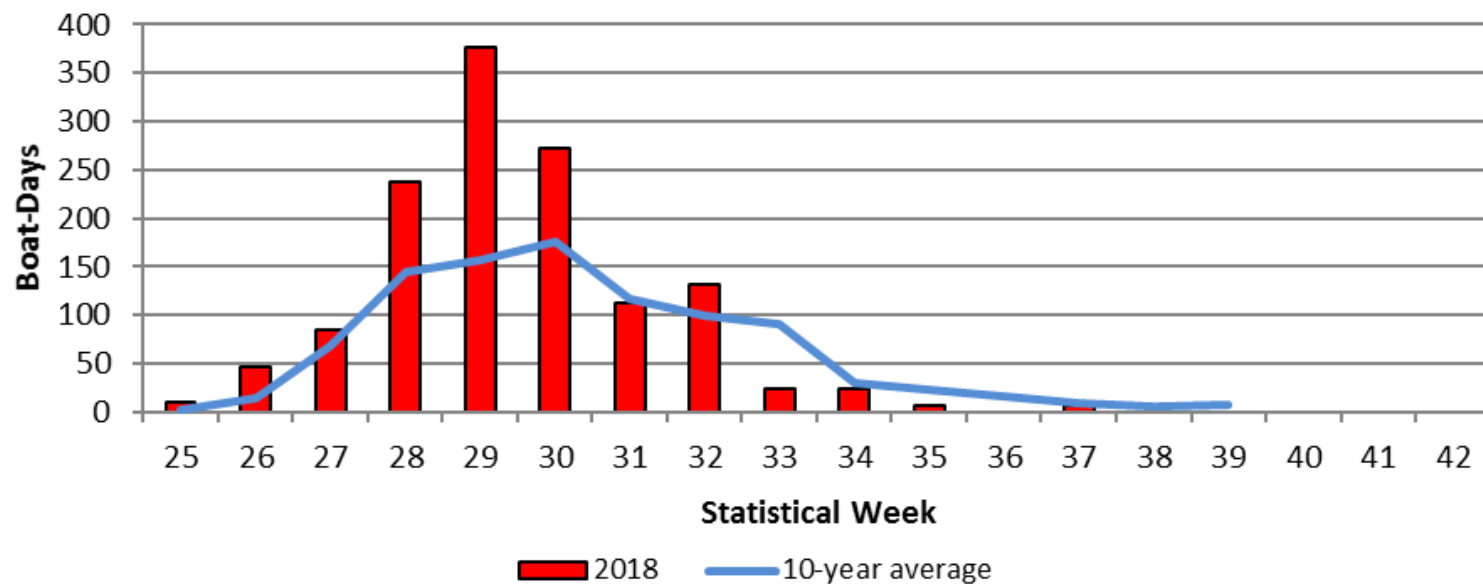
### 2018 Stephens Passage (111-31) Days Open



### 2018 Taku Inlet (111-32) Boat-Days

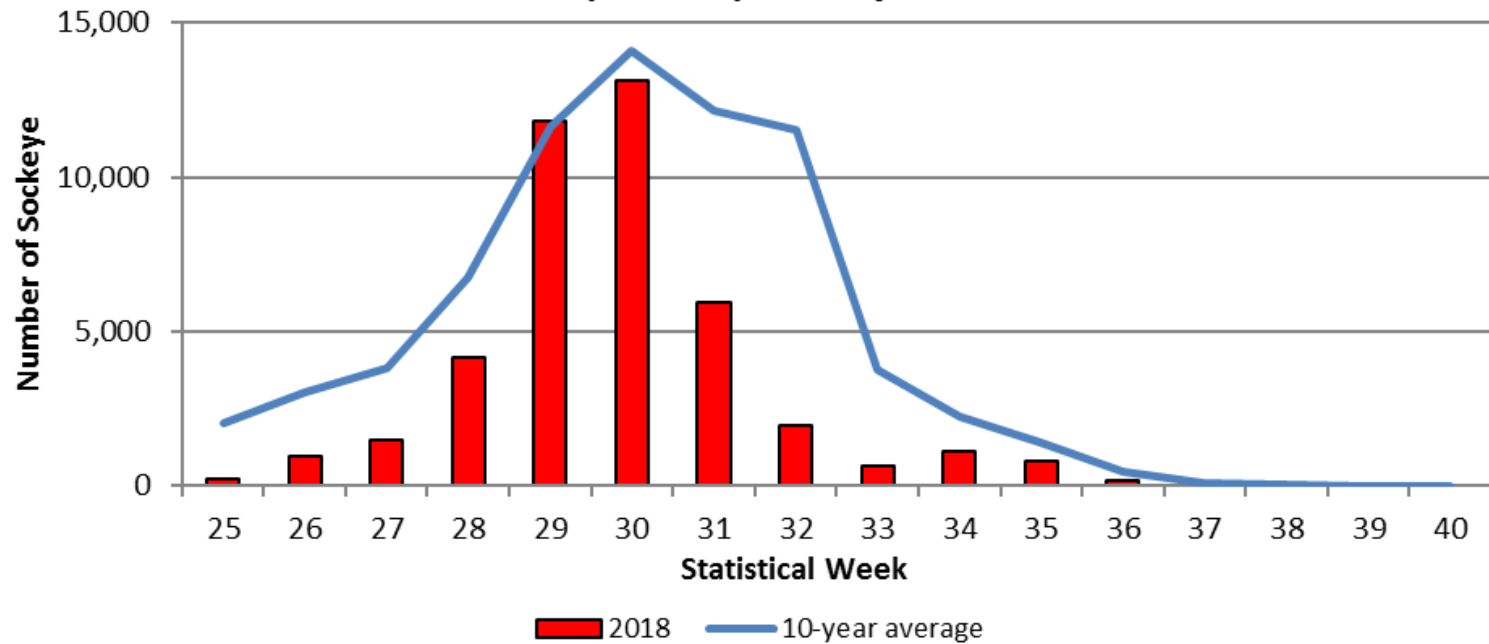


### 2018 Stephens Passage (111-31) Boat-Days

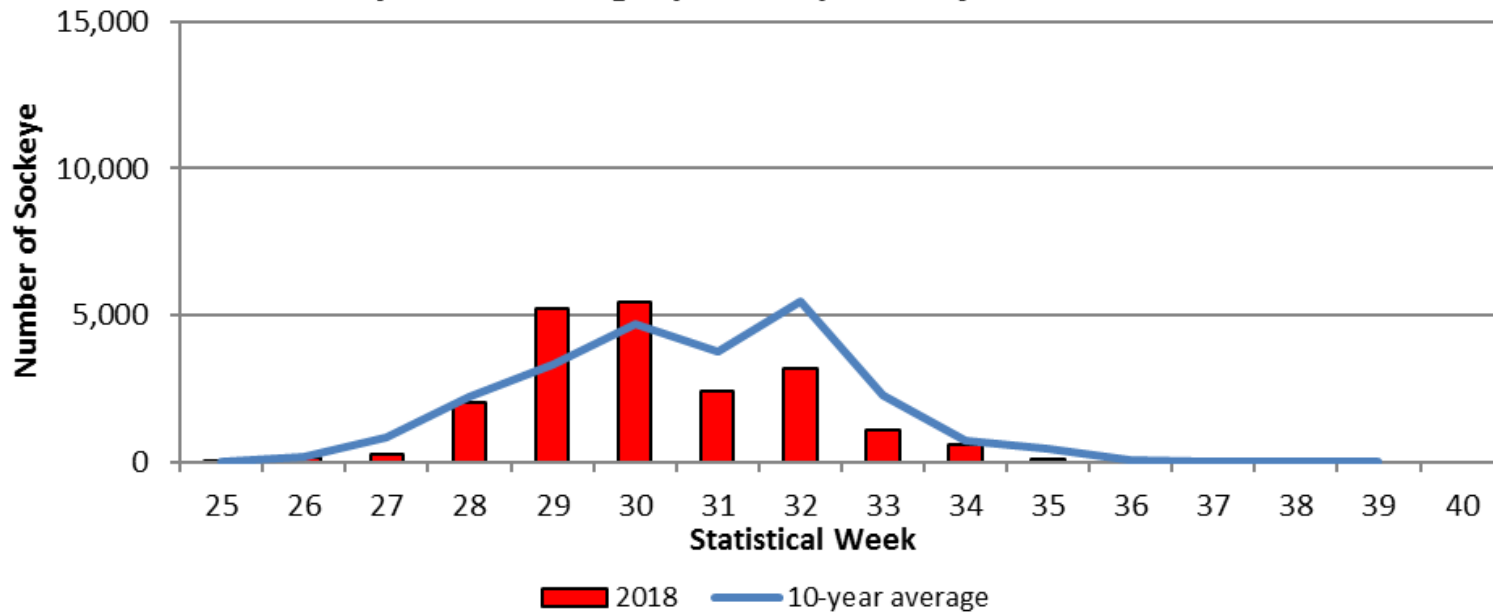




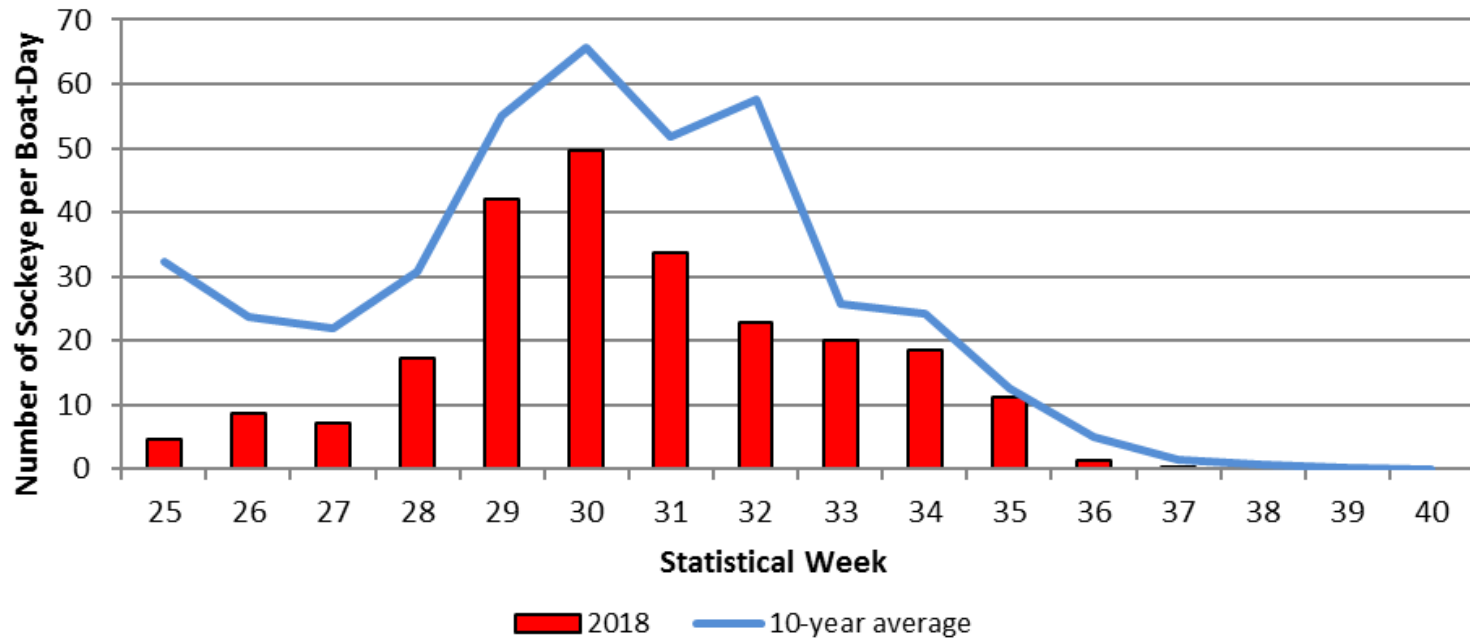
### 2018 Taku Inlet (111-32) Sockeye Salmon Harvest



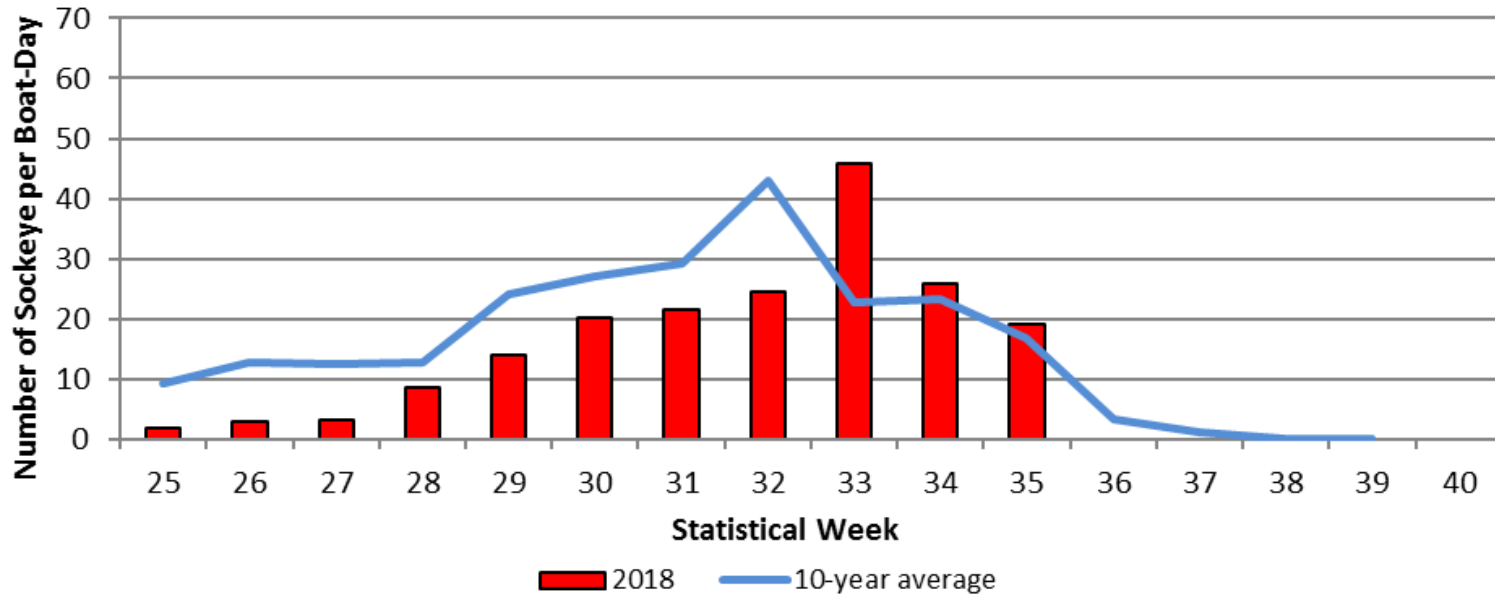
### 2018 Stephens Passage (111-31) Sockeye Salmon Harvest



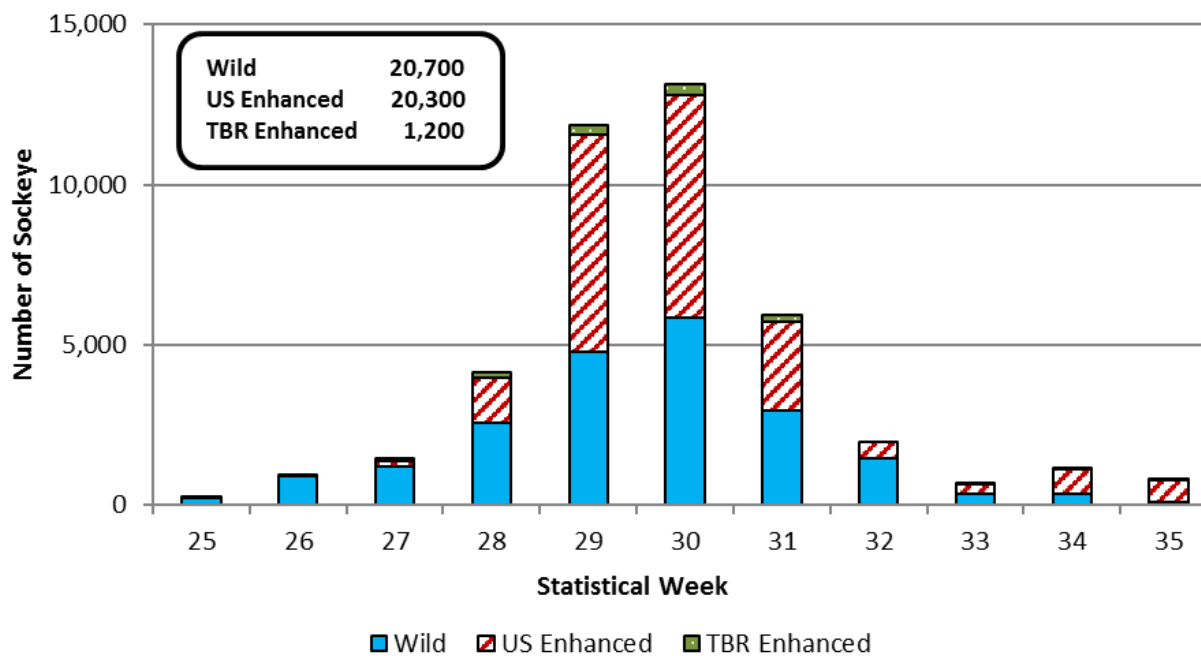
### 2018 Taku Inlet (111-32) Sockeye Salmon CPUE



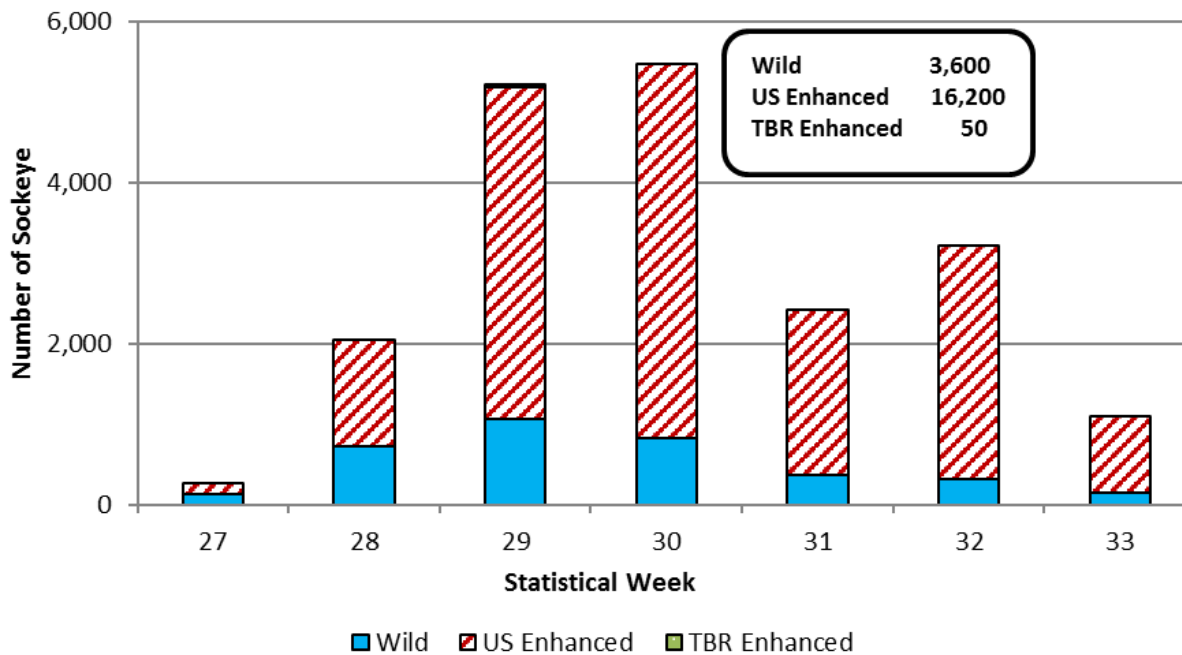
### 2018 Stephens Passage (111-31) Sockeye Salmon CPUE



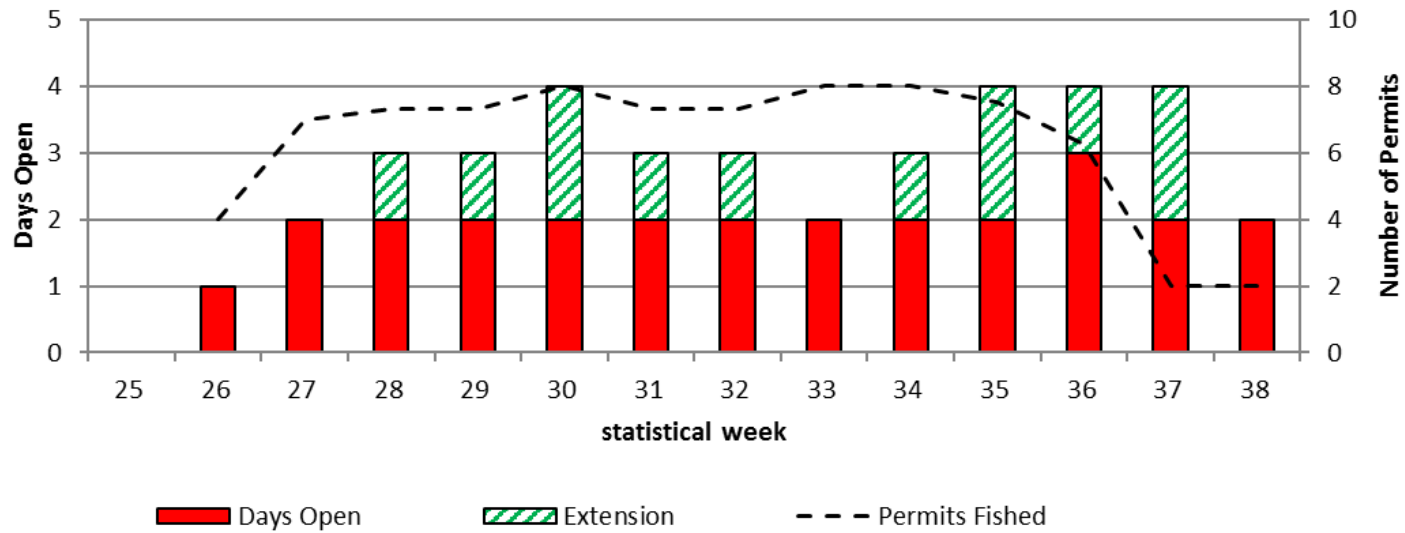
### 111-32 Wild and Enhanced Sockeye Salmon Harvest



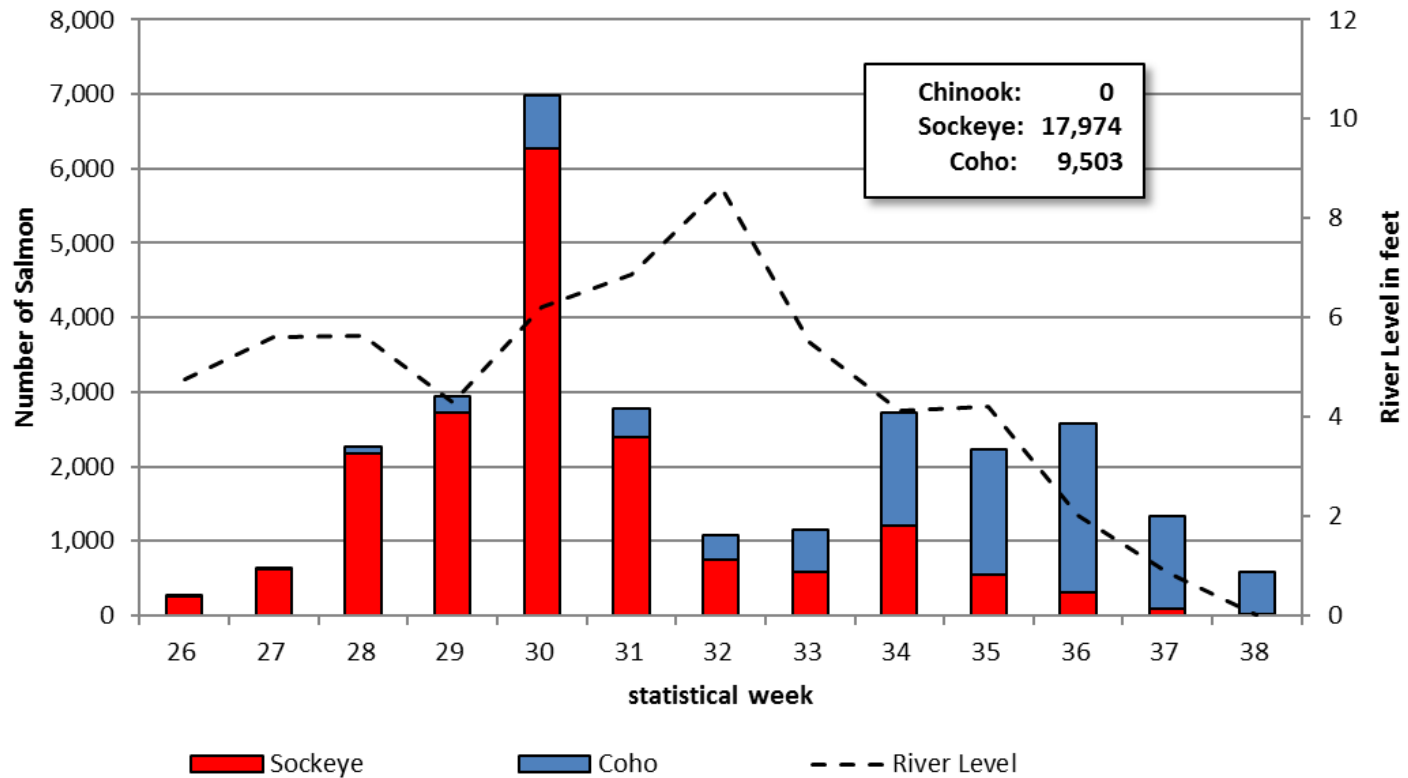
### 111-31 Wild and Enhanced Sockeye Salmon Harvest



### 2018 Canadian Taku River Commercial Gillnet Time and Effort



### 2018 Canadian Inriver Commercial Fishery Harvest



# Preliminary 2018 Taku River Sockeye Salmon Run Reconstruction

U.S. Harvest: 27,100 fish (includes PU harvest)

Canada Harvest: 17,988 fish (includes Aboriginal harvest)

Terminal Run Size: 152,700 fish (8,000 enhanced)

Inriver Run Size: 125,600 fish

Escapement: 107,600 fish

TAC = 77,700 fish

Harvest shares (5,001 – 15,000 enhanced fish) = 79% U.S., 21% Canada

U.S. AC = 61,400 fish (harvested 44%)

Canada AC = 16,300 fish (harvested 110%)

# Preliminary 2018 Sockeye Salmon Escapements

Taku River: 107,600 fish (5,400 enhanced)

Management Target: 71,000 – 80,000 fish

King Salmon Lake: 3,180 fish (10-year average: 2,230)

Kuthai Lake: 11 fish (10-year average: 910)

Little Trapper Lake: 8,249 fish (10-year average: 6,560)

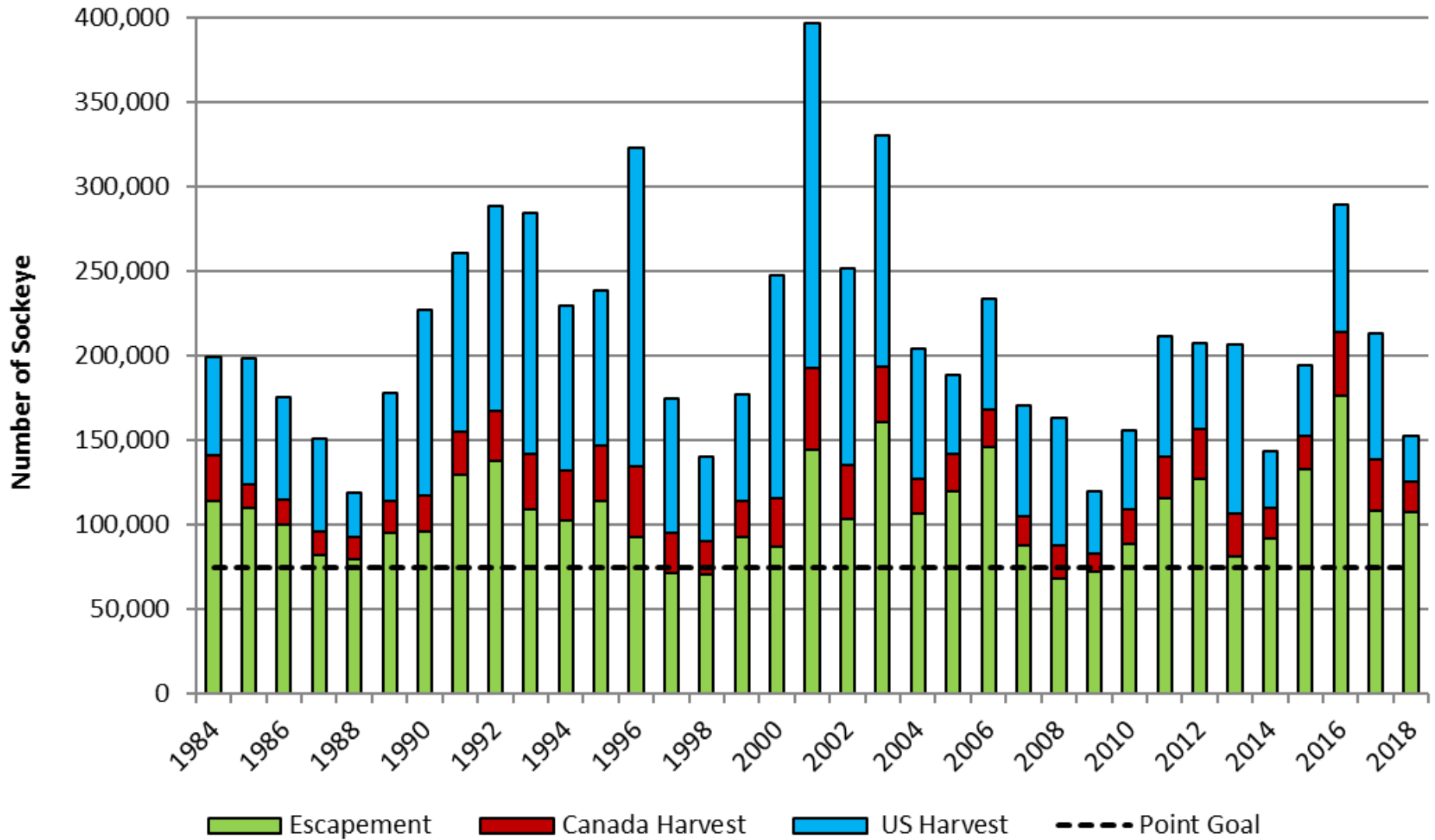
Tatsamenie Lake: 4,920 fish (10-year average: 11,210)

Speel Lake: 4,244 fish Goal Range: 4,000 – 9,000 fish

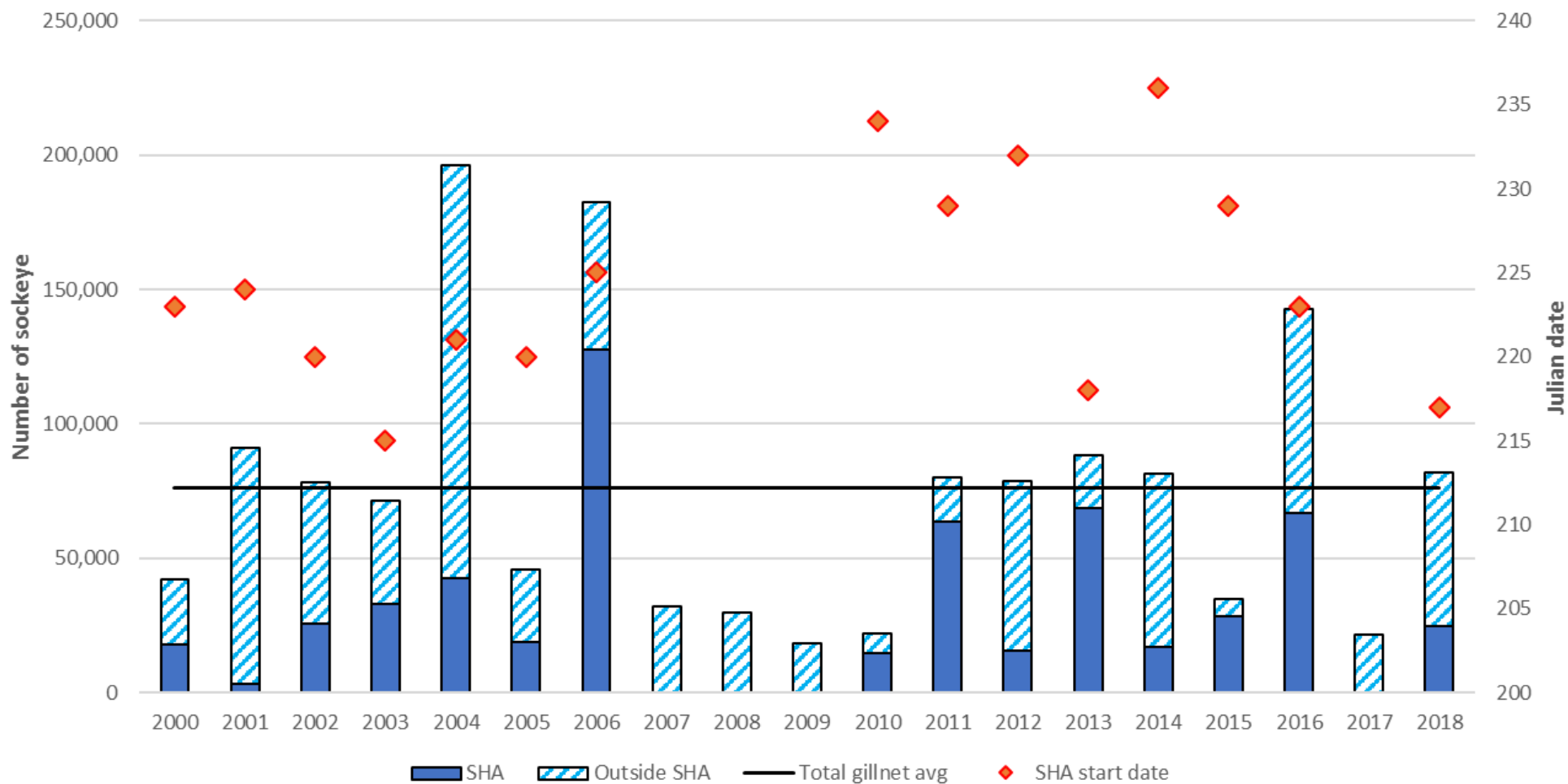
Crescent Lake: No fish observed on aerial surveys



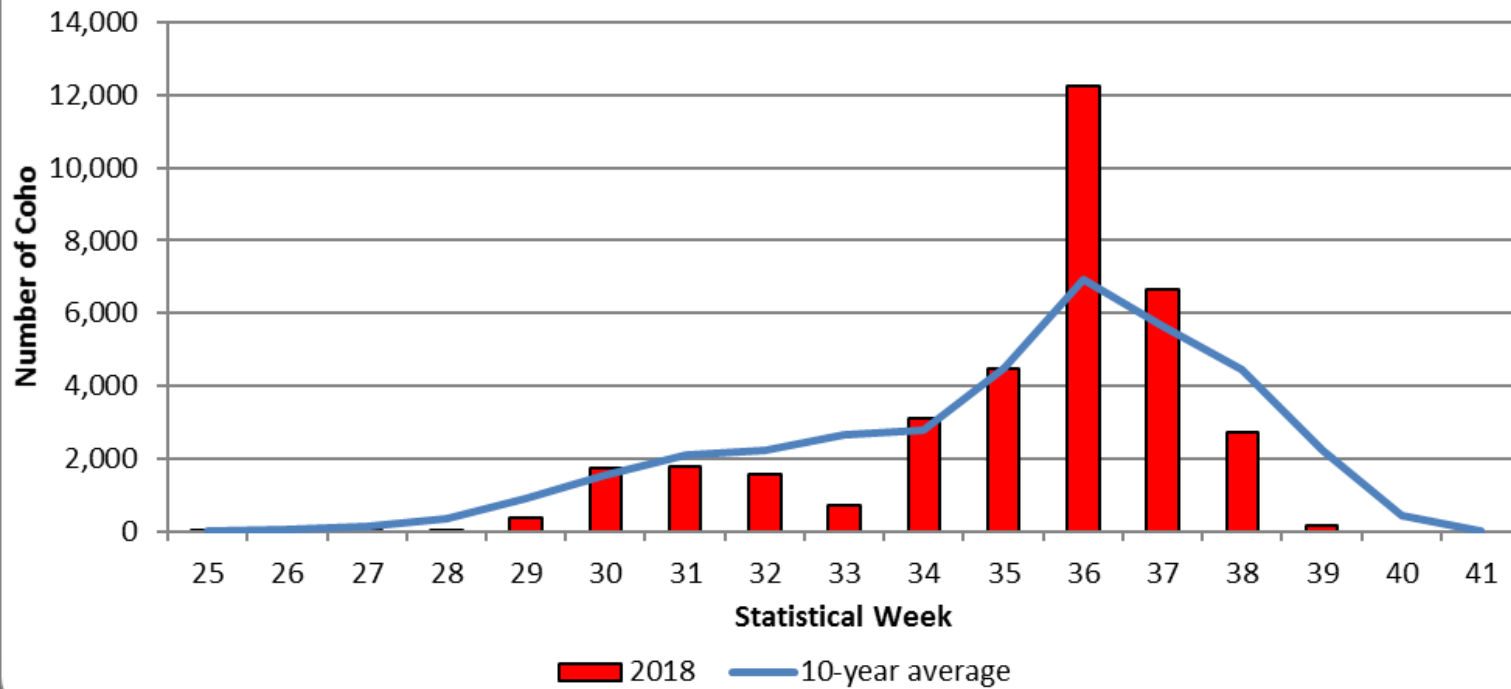
## Taku River Sockeye Salmon Terminal Run Size, 1984-2018



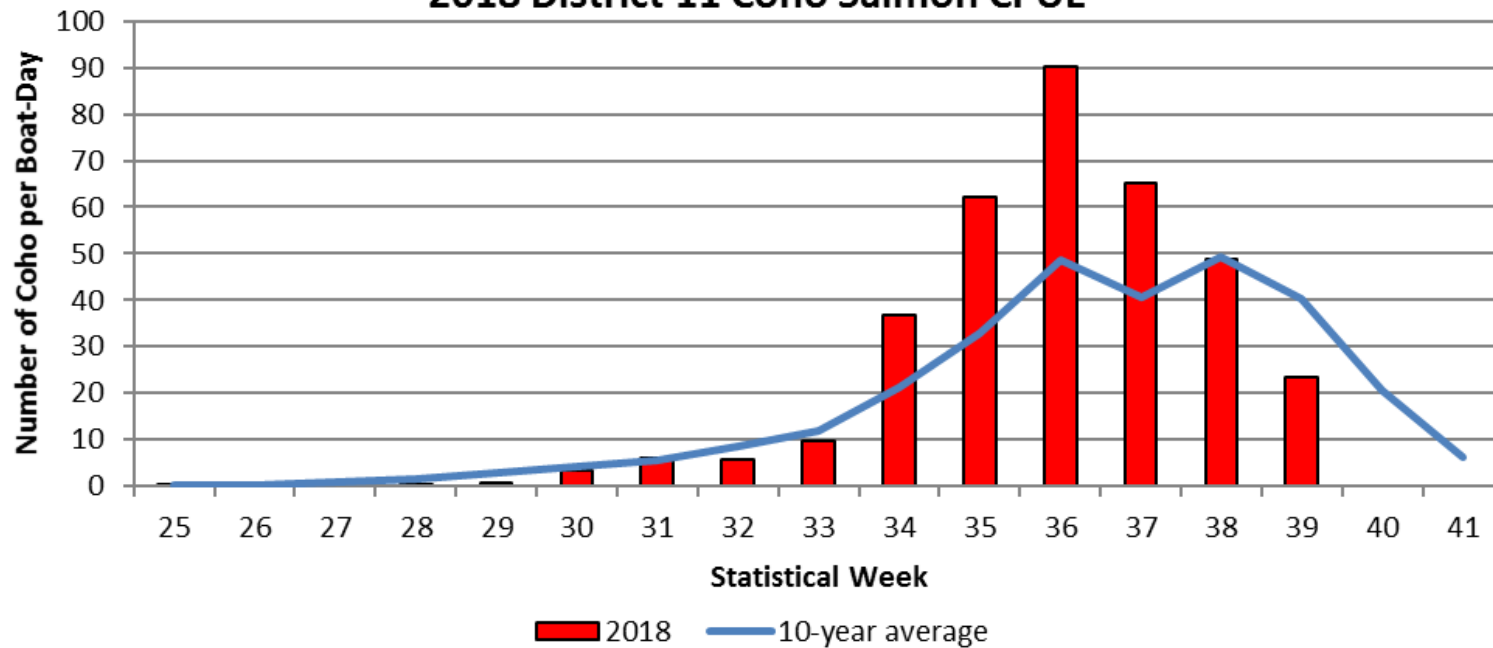
### Gillnet Harvest of Snettisham Hatchery Sockeye Salmon and Speel Arm SHA Start Date, 2000-2018



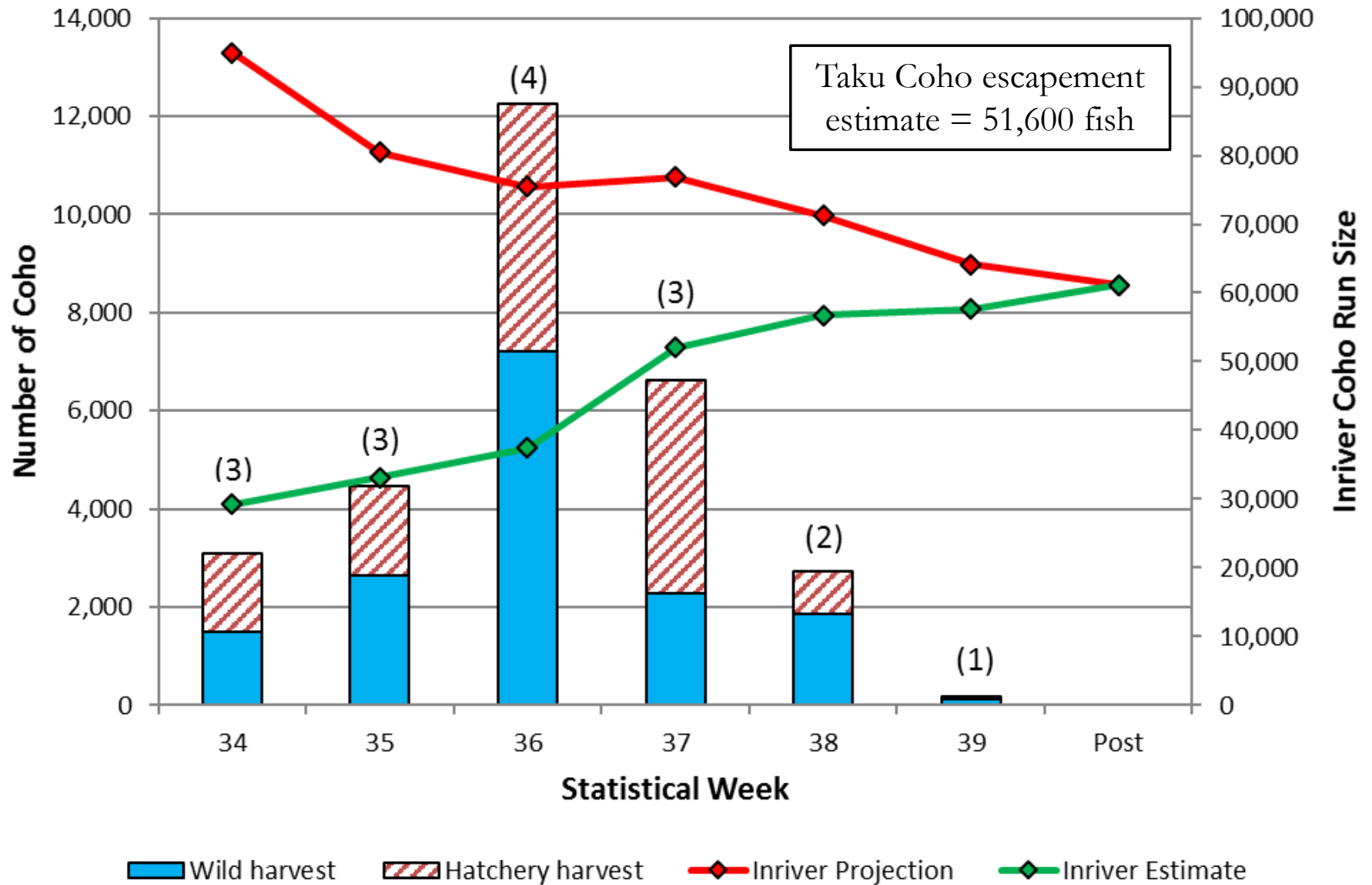
### 2018 District 11 Coho Salmon Harvest



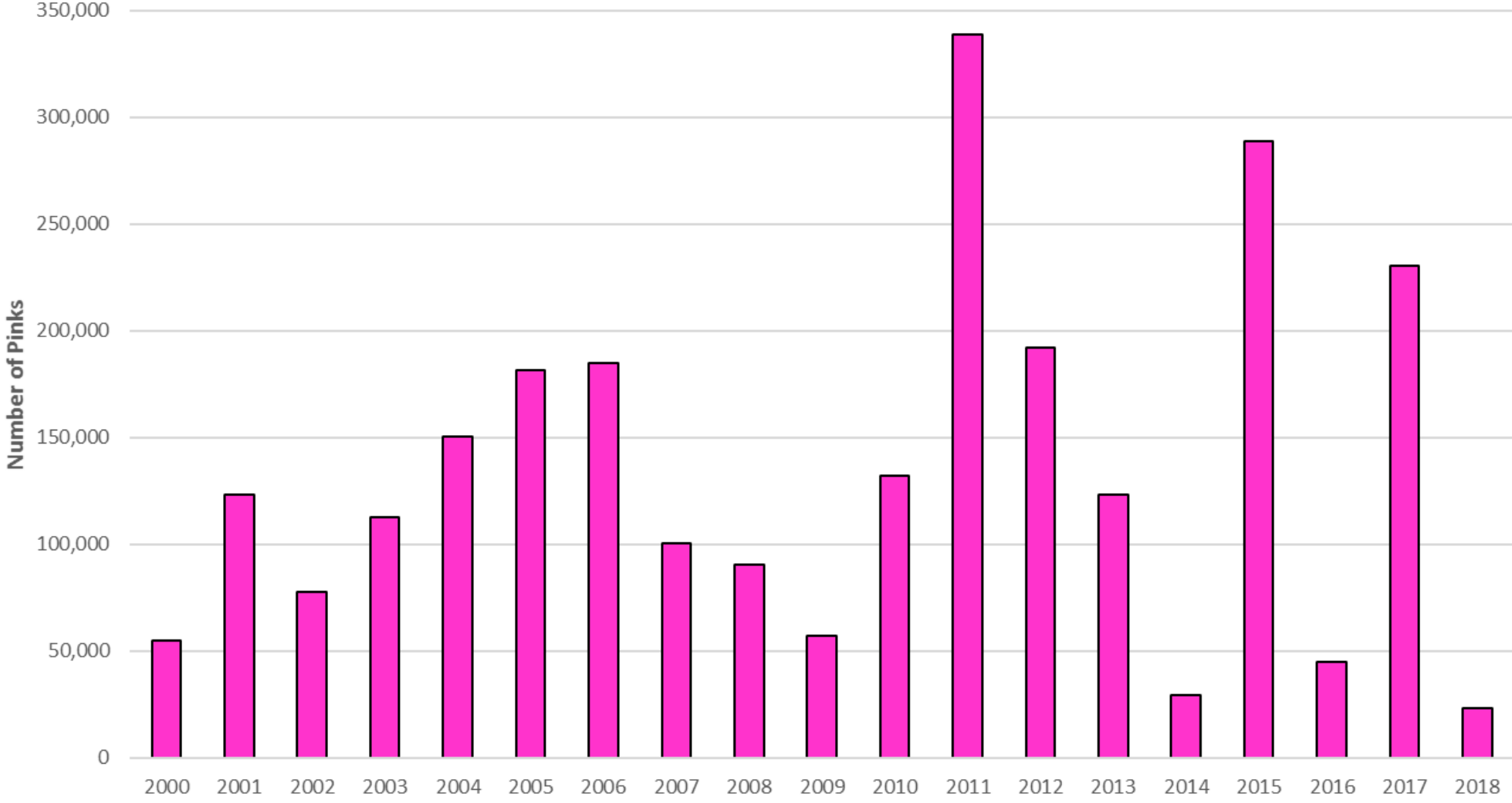
### 2018 District 11 Coho Salmon CPUE



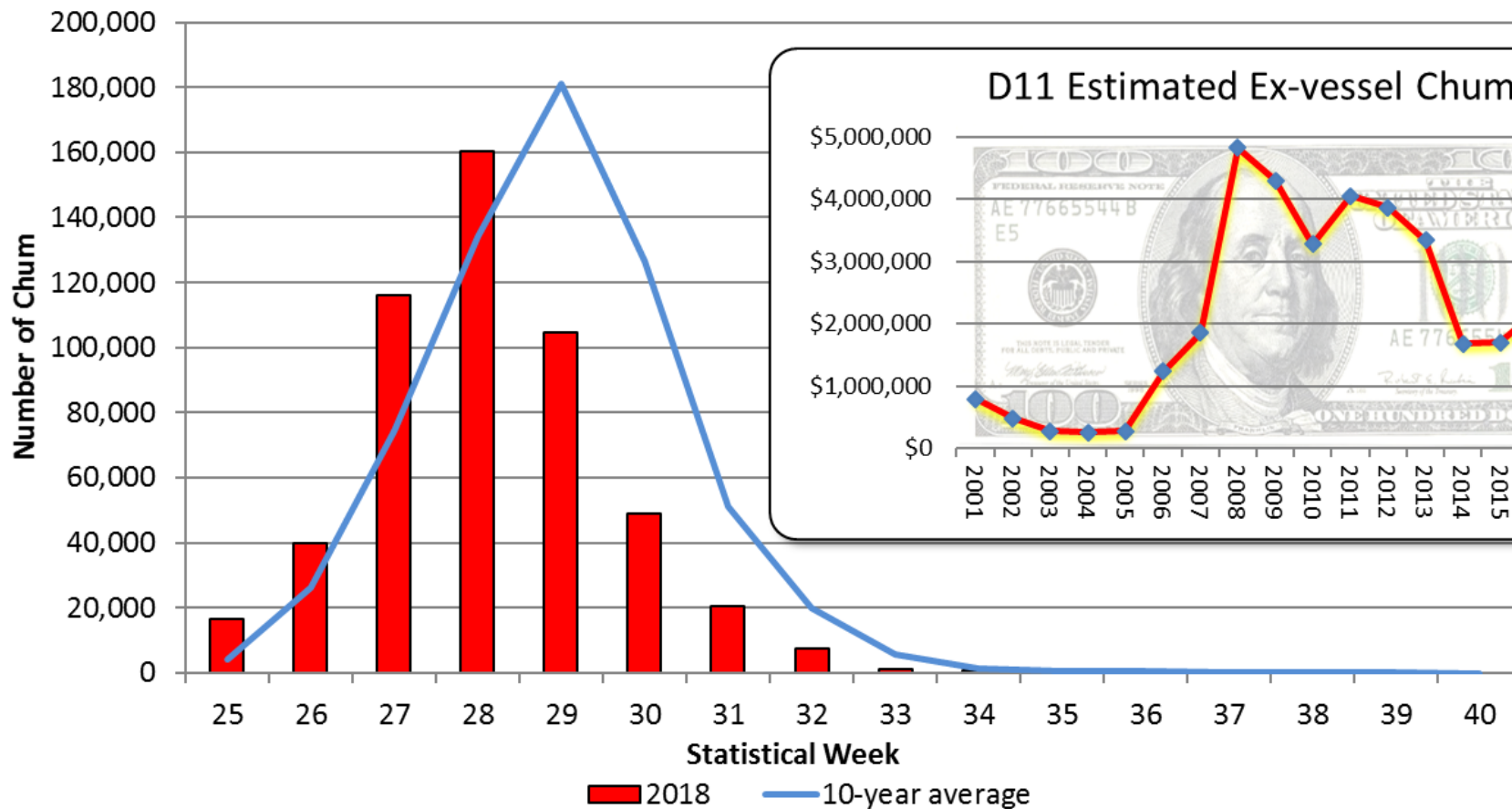
## 2018 District 11 Coho Salmon Harvest and Taku River Run Size



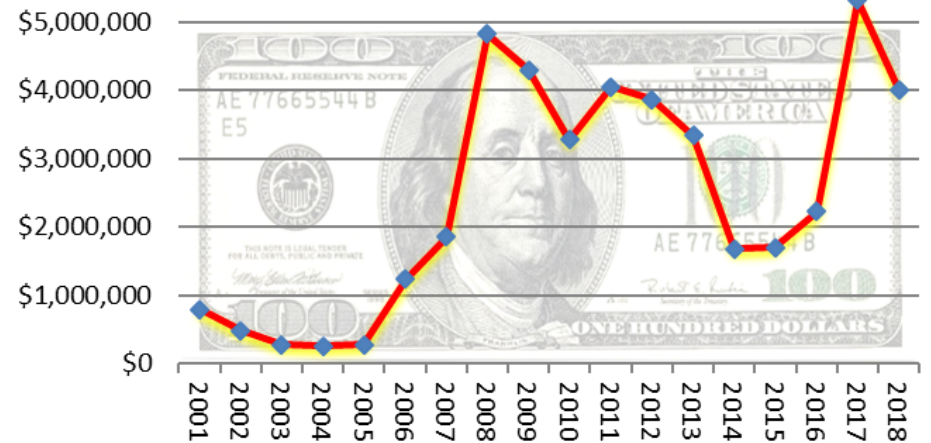
District 11 Gillnet Pink Salmon Harvest, 2000-2018



## 2018 District 11 Chum Salmon Harvest



### D11 Estimated Ex-vessel Chum Value





## D11 Drift Gillnet Estimated Ex-vessel Value by Species

