

# 2017 – Post Season Review

Section 1-B Drift Gillnet



Scott Walker,  
Justin Breese and Bo Meredith

# Ketchikan Area Commercial Net Harvests 2017 – All Fisheries

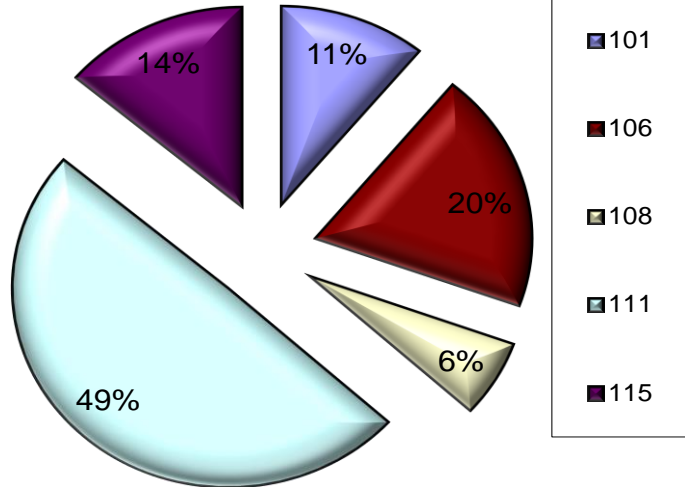
## 2017 Ketchikan Area Commercial Net Harvests

### Purse Seine and Gillnet Traditional Fisheries - Districts 1-4

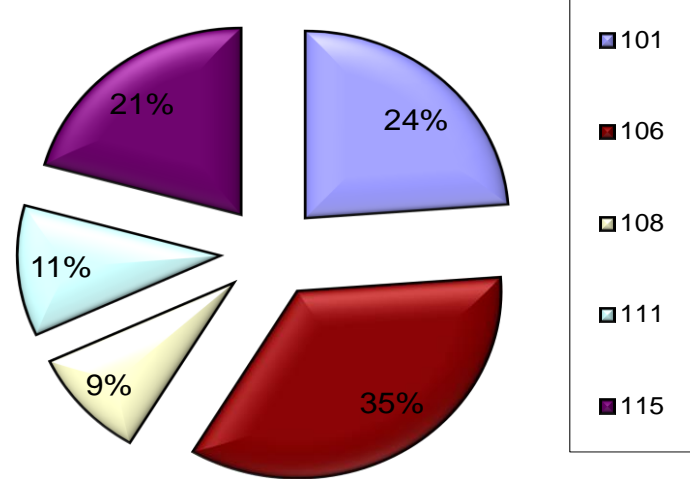
	<b>Chinook</b>	<b>Sockeye</b>	<b>Coho</b>	<b>Pink</b>	<b>Chum</b>	<b>Totals</b>
<b>Tree Point Gillnet</b>	1,664	25,073	33,853	223,439	222,394	506,423
<b>District 1</b>	67	15,370	11,379	1,066,879	61,028	1,154,723
<b>District 2</b>	24	13,971	26,743	213,387	645,464	899,589
<b>District 3</b>	0	13,483	18,067	3,292,208	72,827	3,396,585
<b>District 4</b>	1,090	98,024	17,810	2,107,243	52,472	2,276,639
<b>Neets Bay THA - GN</b>	1,752	0	0	0	2,810	4,562
<b>Neets Bay THA - PS</b>	2,531	27	7	32	7,847	10,444
<b>Nakat Inlet THA - GN</b>	232	924	9,506	16,704	113,413	140,779
<b>Kendrick Bay THA - PS</b>	10	1,010	1,783	3,994	137,605	144,402
<b>Annette Island - PS</b>	510	6,075	6,562	727,606	61,242	801,995
<b>Annette Island- GN</b>	1,039	5,200	29,273	150,878	187,729	374,119
<b>Totals</b>	<b>8,919</b>	<b>179,157</b>	<b>154,983</b>	<b>7,802,370</b>	<b>1,564,831</b>	<b>9,710,260</b>

# 2017 Gillnet Species Harvest by District – No THA Harvest

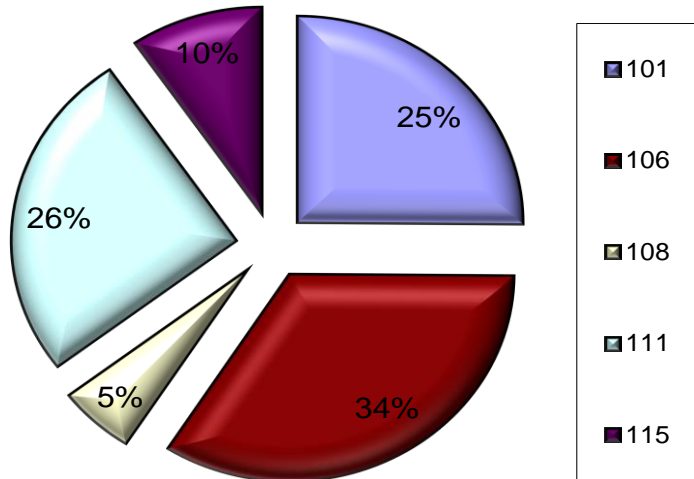
**Sockeye Harvest by Gillnet District**



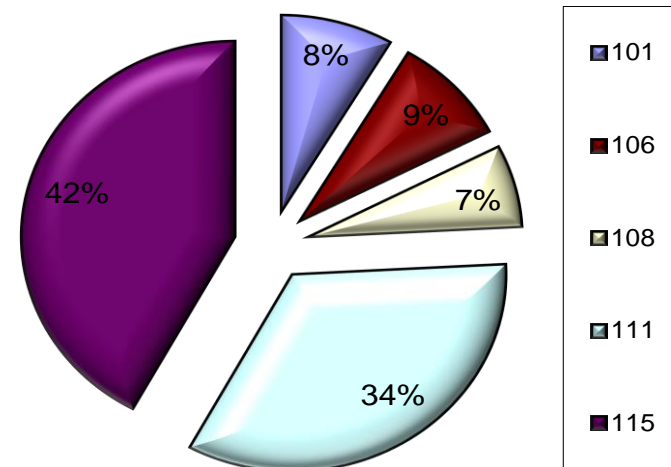
**Coho Harvest by Gillnet District**



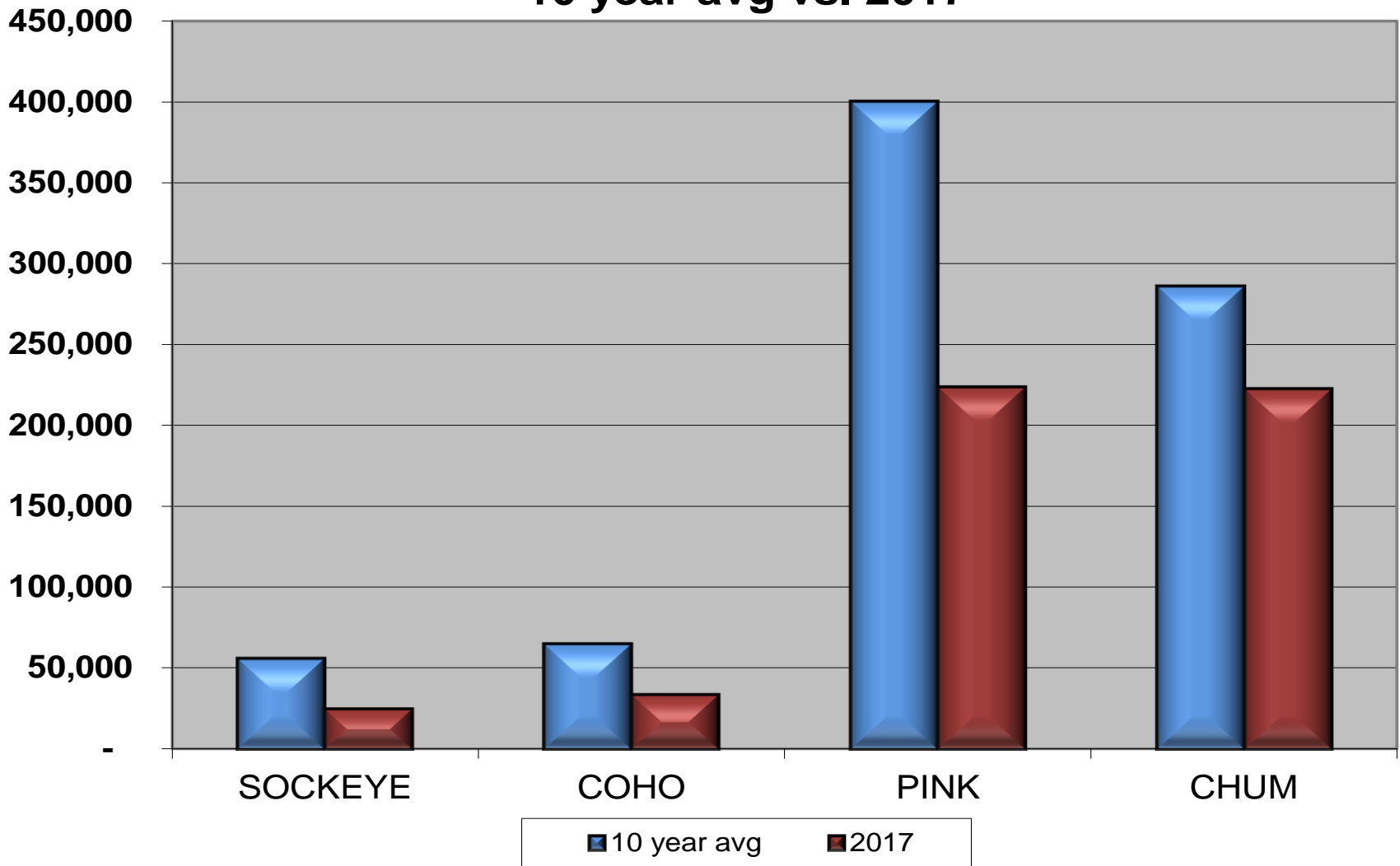
**Pink Harvest by Gillnet District**



**Chum Harvest by Gillnet District**



## Section 1-B Annual Harvest by Species 10 year avg vs. 2017



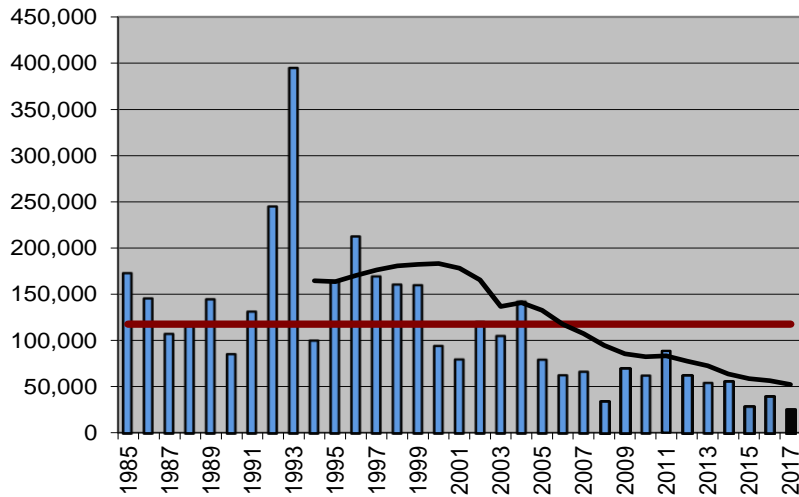
# 2017 Section 1-B gillnet – Harvest by Statistical Week

## 2017 Section 1-B Drift Gillnet Fishery

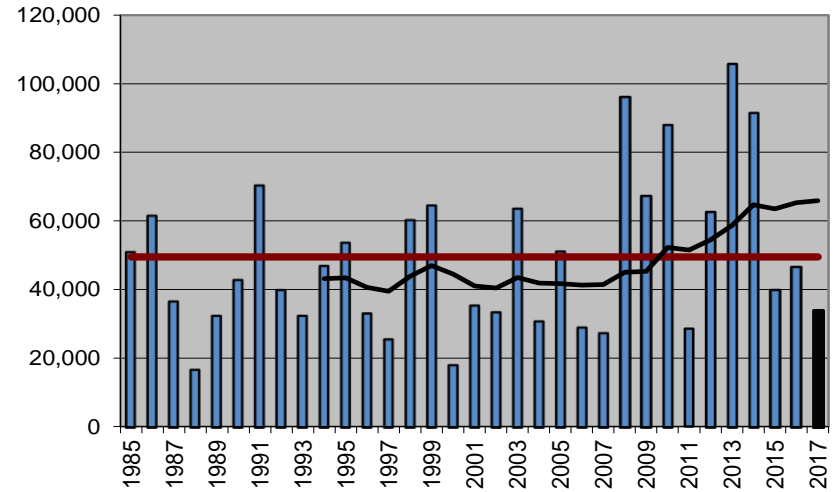
	Opening	Chinook	Sockeye	Coho	Pink	Chum	Boats	Hours
	25	383	4,898	225	22	12,959	43	96
	26	431	1,641	536	1,801	42,358	53	96
	27	336	2,891	738	18,916	56,873	48	96
	28	188	2,373	1,206	27,883	35,884	49	96
Pink salmon management stat weeks 29-35	29	178	2,084	3,553	19,395	20,956	48	96
	30	50	1,857	1,109	16,308	12,204	37	96
	31	49	3,273	1,040	29,374	12,004	39	96
	32	20	2,486	994	30,306	4,749	36	96
	33	4	1,011	652	30,343	4,470	26	96
	34	5	1,035	964	26,033	5,709	33	120
	35	6	1,079	2,927	18,351	5,451	36	96
	36	0	292	5,275	4,179	3,987	34	96
	37	12	85	7,569	361	3,456	39	96
	38	2	65	5,074	163	1,068	30	96
	39	0	3	1,991	4	266	18	96
<b>Total</b>	<b>1,664</b>	<b>25,073</b>	<b>33,853</b>	<b>223,439</b>	<b>222,394</b>	<b>73</b>	<b>1,464</b>	

# 2017 Section 1-B – Annual Harvest by Species

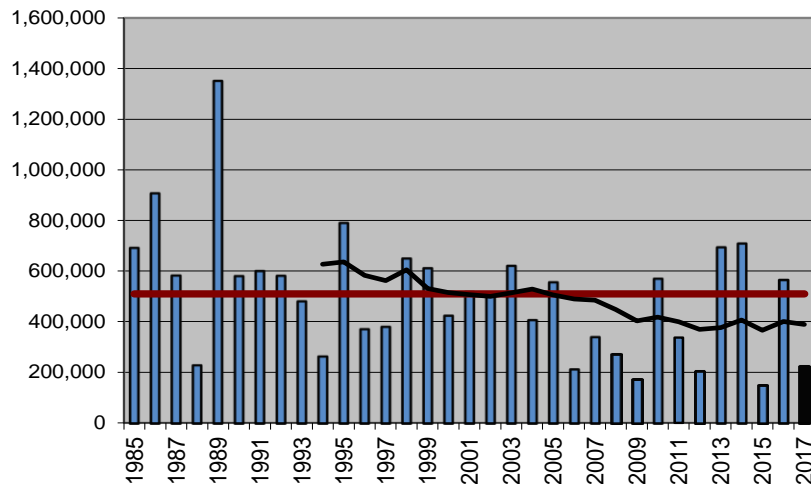
## Section 1-B Gillnet - Sockeye Harvest



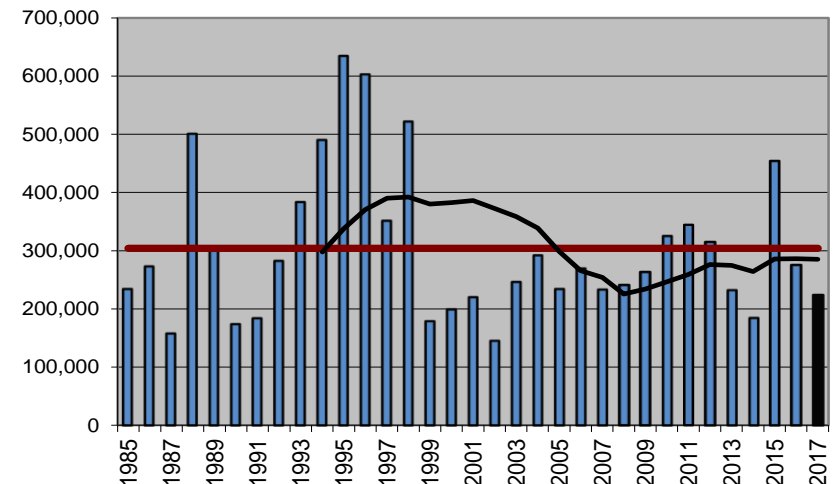
## Section 1-B Gillnet - Coho Harvest



## Section 1-B Gillnet - Pink Harvest

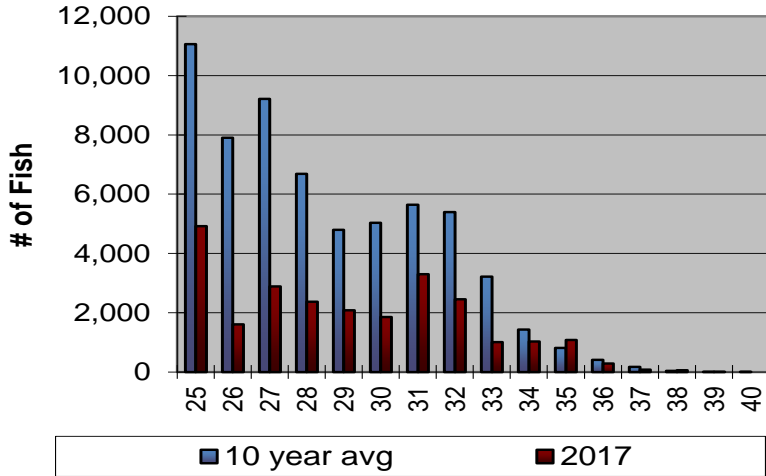


## Section 1-B Gillnet - Chum Harvest

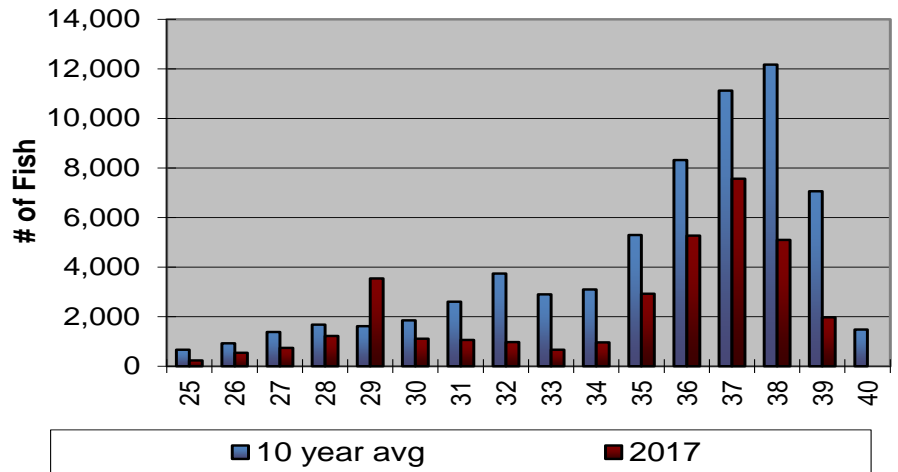


# 2017 Section 1-B – Weekly Harvest

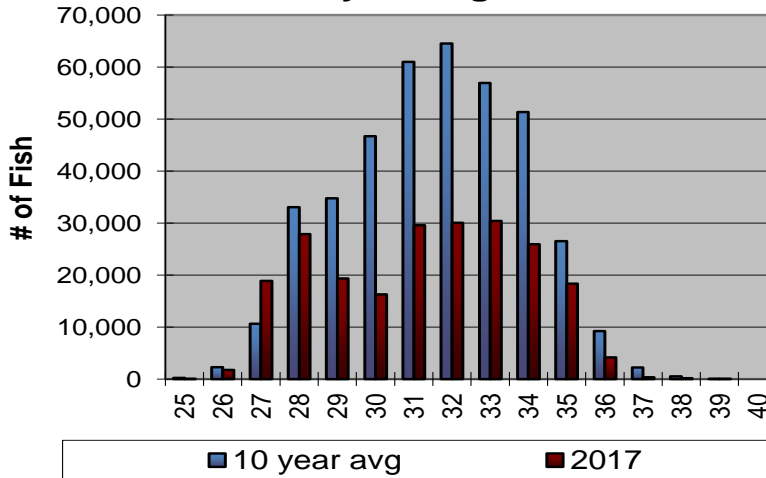
**Section 1-B Weekly Sockeye Harvest  
10 year avg vs 2017**



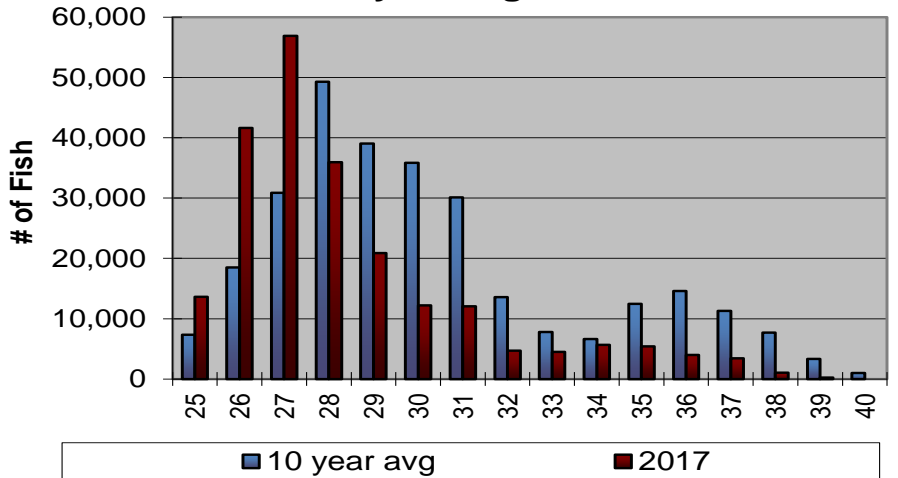
**Section 1-B Weekly Coho Harvest  
10 year avg vs 2017**



**Section 1-B Weekly Pink Harvest  
10 year avg vs 2017**

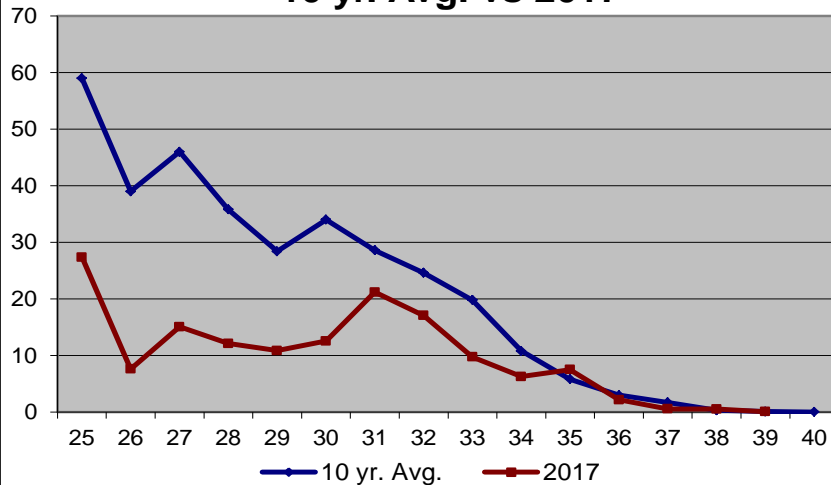


**Section 1-B Weekly Chum Harvest  
10 year avg vs 2017**

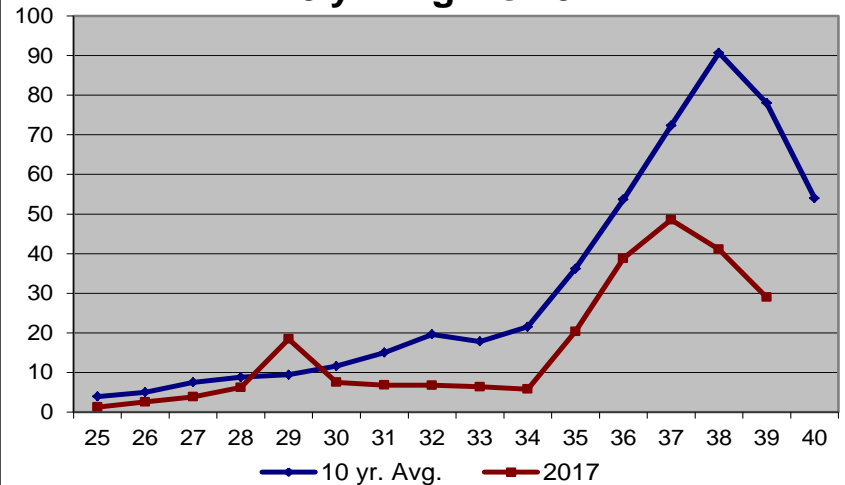


# 2017 Section 1-B – Average Harvest per boat per day

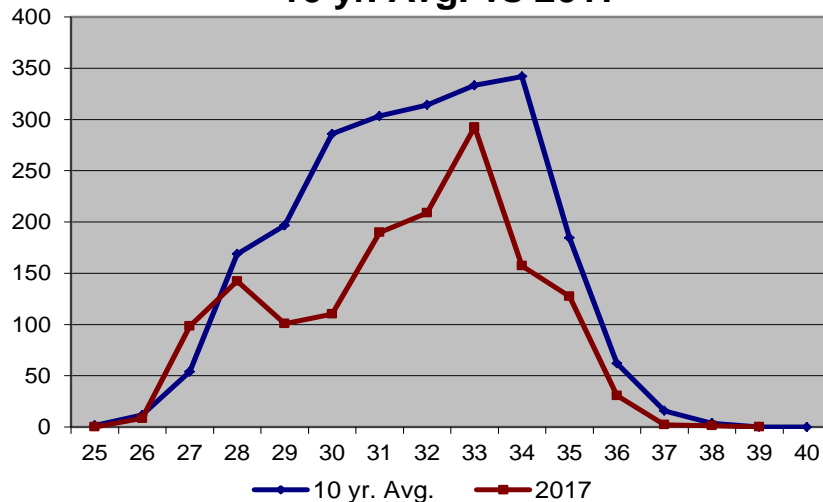
**Sockeye - CPUE**  
10 yr. Avg. vs 2017



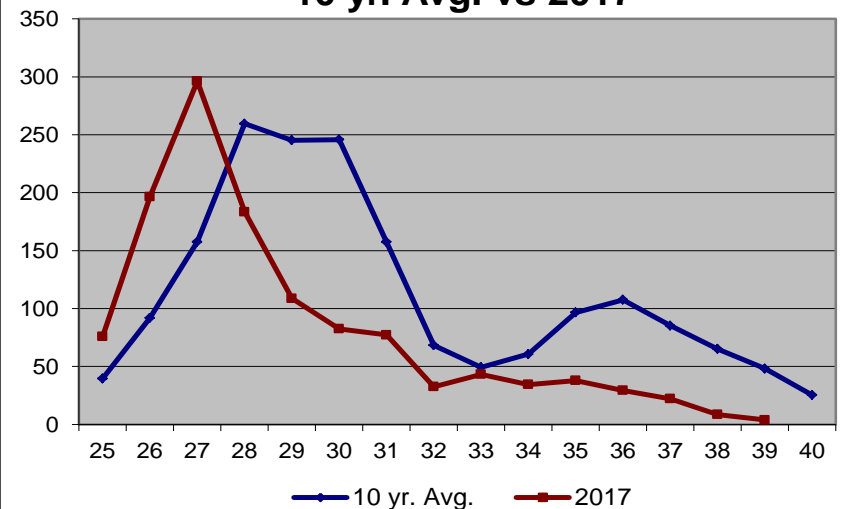
**Coho - CPUE**  
10 yr. Avg. vs 2017



**Pink - CPUE**  
10 yr. Avg. vs 2017

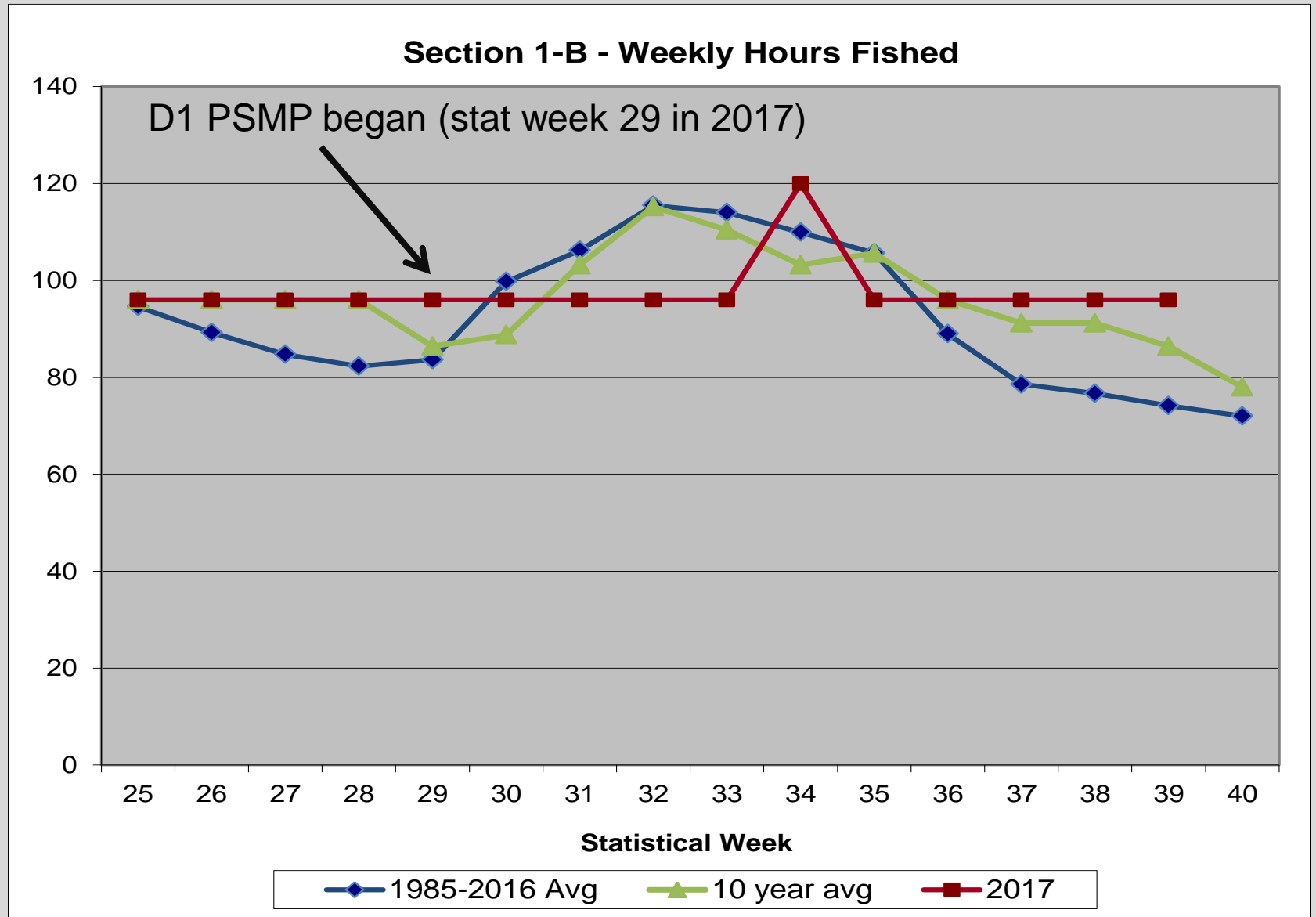


**Chum - CPUE**  
10 yr. Avg. vs 2017





# 2017 Section 1-B drift gillnet – Fishing Time



# Nakat Inlet THA

## Nakat Inlet THA Forecast for 2017

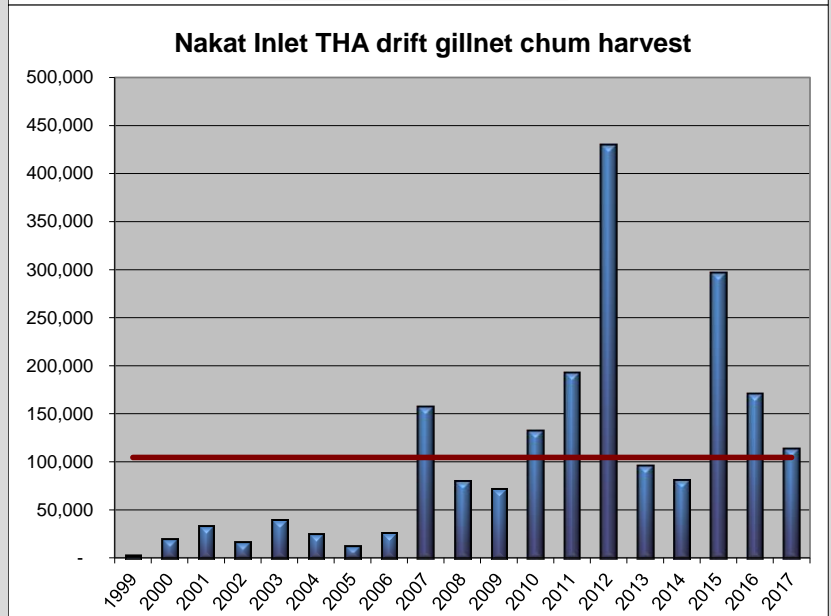
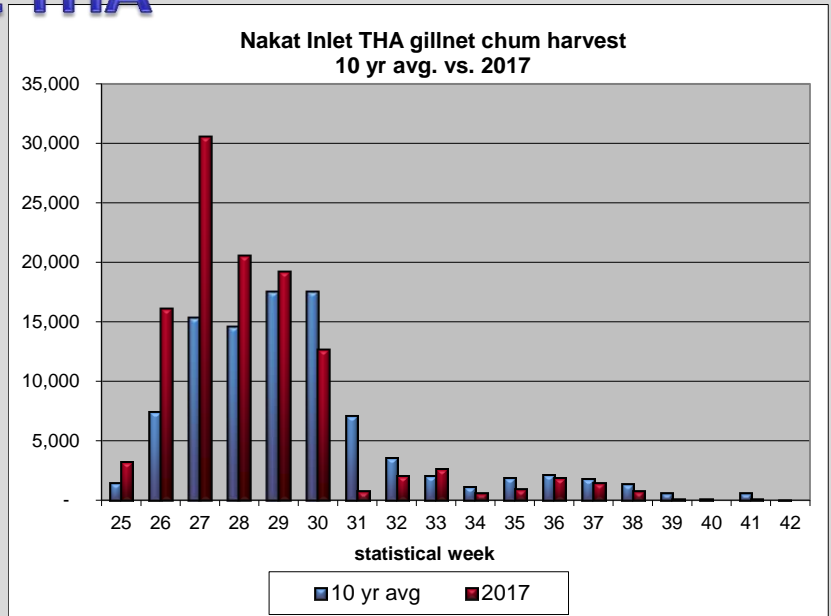
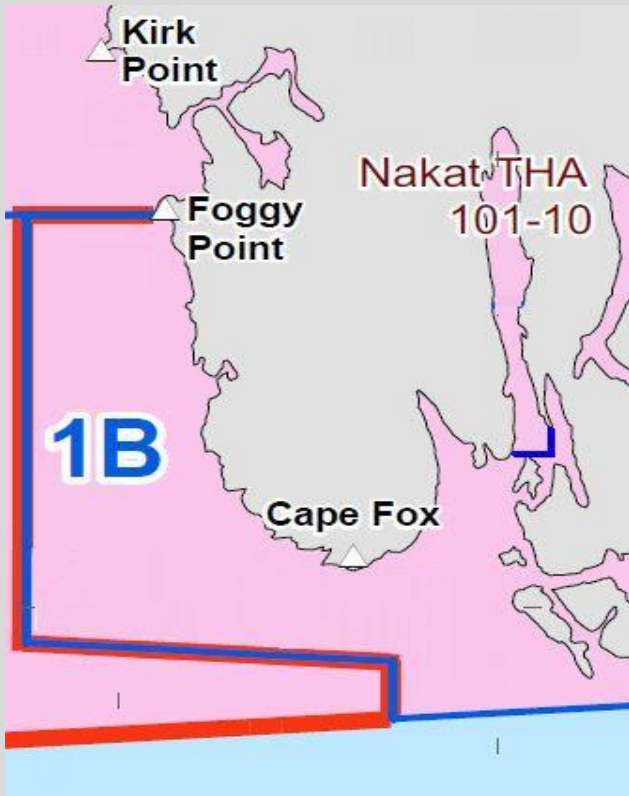
226,000 Summer Chum

62,920 Fall Chum

### Total enhanced Nakat Chum Harvest

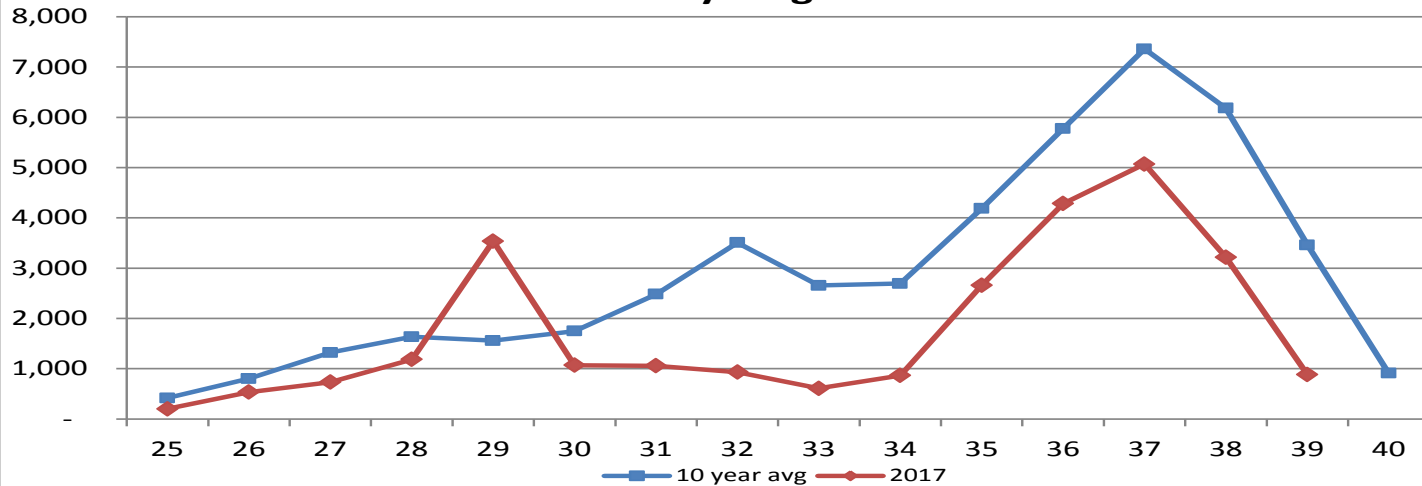
Gillnet CP	92,100
Seine CP	13,000
THA – Gillnet	113,500

**Total** ~ 218,600

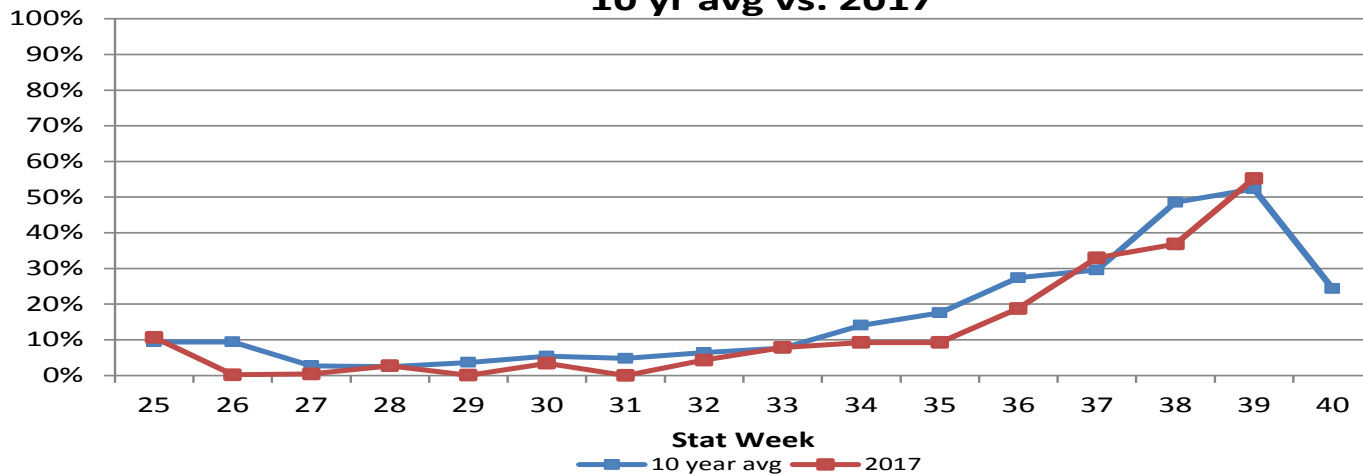


# 2017 Tree Point – Wild vs Hatchery Coho

**Numbers of Wild Coho in the Section 1-B drift gillnet fishery  
10 yr avg vs. 2017**



**Percent of Hatchery Fish in Section 1-B drift gillnet fishery  
10 yr avg vs. 2017**



## Peak coho salmon helicopter survey counts.

Combined survey count is the sum of counts and interpolated values. Interpolated values are shown in bold.

	2002	2003	2004	2005	2006	2007	2008	2009	2010	2011	2012	2013	2014	2015	2016	Average	2017
Herman Creek	88	242	150	510	165	134	115	<b>160</b>	85	<b>100</b>	25	<b>221</b>	425	20	160	166	40
Grant Creek	138	<b>197</b>	230	300	<b>124</b>	75	55	330	102	<b>94</b>	60	<b>138</b>	80	200	25	154	<b>167</b>
Eulachon River	1,105	875	801	1,240	190	<b>298</b>	570	330	370	350	400	<b>536</b>	50	550	810	589	540
Klahini River	20	39	170	360	176	35	25	340	<b>68</b>	<b>75</b>	<b>175</b>	<b>138</b>	<b>660</b>	<b>136</b>	450	135	280
Indian River	940	690	935	890	280	245	1,250	750	880	175	170	<b>864</b>	1,500	1,200	370	672	850
Barrier Creek	70	57	250	190	30	15	23	110	90	<b>74</b>	40	<b>164</b>	<b>242</b>	<b>146</b>	90	93	20
King Creek	700	1,140	640	810	405	290	420	1,050	570	110	<b>680</b>	<b>602</b>	850	550	540	618	100
Choca Creek	220	380	180	270	130	210	100	100	190	85	110	<b>200</b>	400	200	<b>315</b>	181	240
Carroll River	270	<b>427</b>	455	500	<b>272</b>	<b>171</b>	<b>613</b>	1,100	<b>202</b>	<b>225</b>	330	215	220	450	750	398	285
Blossom River	1,359	1,940	1,005	3,680	2,300	990	7,100	<b>1,041</b>	350	1,235	2,400	2,140	2,000	2,310	3,070	2,128	3,100
Keta River	1,368	1,934	1,200	3,290	645	970	<b>2,524</b>	315	550	<b>739</b>	3,300	1,560	1,300	1,470	2,470	1,533	2,450
Marten River	2,302	1,980	1,835	1,130	335	351	925	1,675	350	350	2,650	2,370	<b>2,661</b>	<b>1,555</b>	2,120	1,354	1,675
Humpback Creek	2,004	214	1,230	500	260	3	2,600	700	200	850	360	530	<b>1,110</b>	<b>210</b>	280	788	830
Tombstone River	1,639	1,745	823	1,170	1,600	<b>701</b>	360	225	<b>650</b>	<b>726</b>	1,250	1,340	5,000	1,035	1,970	1,019	980
Hugh Smith Lake - weir count	3,291	1,510	840	1,732	891	1,244	1,741	2,282	2,878	2,137	1,908	3,048	3,993	967	980	1,859	1,280
Combined Survey Count	12,223	11,859	9,904	14,840	6,912	4,488	16,680	8,226	4,656	5,189	11,950	11,018	16,498	10,032	13,420	9,829	11,557

# Section 1-B Drift Gillnet

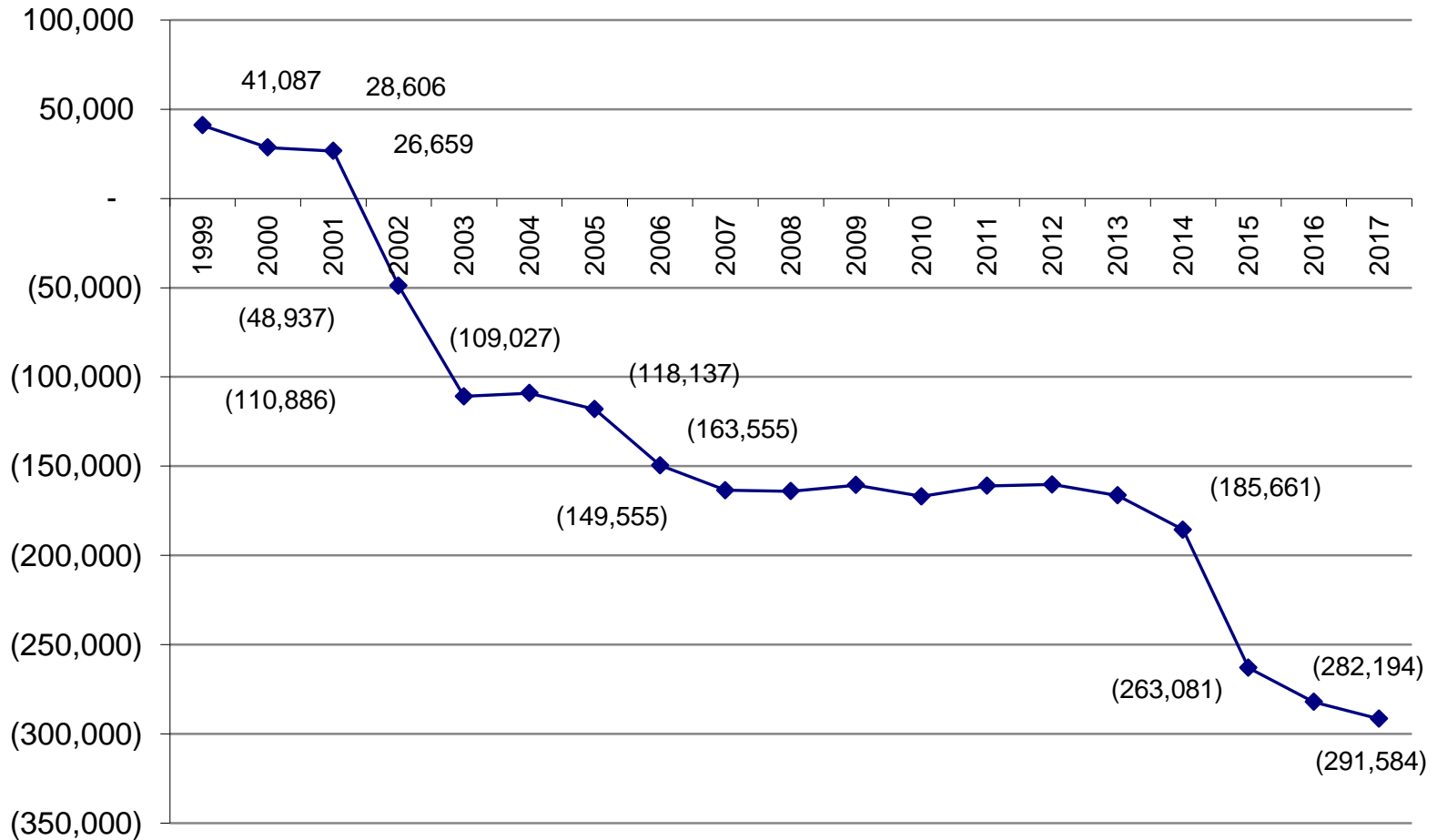
## Treaty Fishery Performance, 2017 (preliminary)

	Nass River		Allowable	Allowable D1	Total	Actual Nass	Overage	Cumulative
	Total	Nass River	Nass River	GN Harvest	Sockeye	River Alaska	Underage	overage / -
	Return	Escapement	AAH	(13.8%)	Harvest	Harvest	Per Year	underage
1999	842,806	200,000	642,806	88,707	160,028	129,794	41,087	41,087
2000	625,982	200,000	425,983	58,786	94,651	46,305	(12,481)	28,606
2001	580,611	167,258	413,358	57,043	80,041	55,096	(1,947)	26,659
2002	1,403,975	200,000	1,203,975	166,149	120,353	90,553	(75,596)	(48,937)
2003	1,177,472	200,000	977,472	134,891	105,263	72,942	(61,949)	(110,886)
2004	986,095	200,000	786,095	108,481	142,357	110,340	1,859	(109,027)
2005	666,877	200,000	466,877	64,429	79,725	55,319	(9,110)	(118,137)
2006	775,112	200,000	575,112	79,365	62,770	47,948	(31,417)	(149,555)
2007	602,210	164,747	437,463	60,370	66,822	46,369	(14,001)	(163,555)
2008	380,397	200,000	180,397	24,895	34,113	24,359	(536)	(164,091)
2009	575,336	200,000	375,336	51,796	69,859	55,270	3,474	(160,618)
2010	438,941	200,000	238,941	32,974	62,651	26,613	(6,361)	(166,979)
2011	556,710	200,000	356,710	49,226	88,618	55,122	5,896	(161,083)
2012	476,818	200,000	276,818	38,201	62,342	38,983	782	(160,300)
2013	501,428	200,000	301,428	41,597	54,589	35,471	(6,126)	(166,426)
2014	549,685	200,000	349,685	48,257	55,828	29,023	(19,234)	(185,660)
2015	868,744	200,000	668,744	92,287	28,155	14,867	(77,420)	(263,080)
2016	442,767	200,000	242,767	33,502	39,912	14,388	(19,114)	(282,193)
2017	355,000	200,000	155,000	21,390	25,073	12,000	(9,390)	(291,583)

13.8% of AAH of Nass River Sockeye (AAH=Total return - 200,000 or actual in-river escapement-lowest)

# Section 1-B Drift Gillnet Treaty Performance

## Treaty Performance - Section 1-B - Cumulative Overage/Underage



**The End**

**Questions?**