

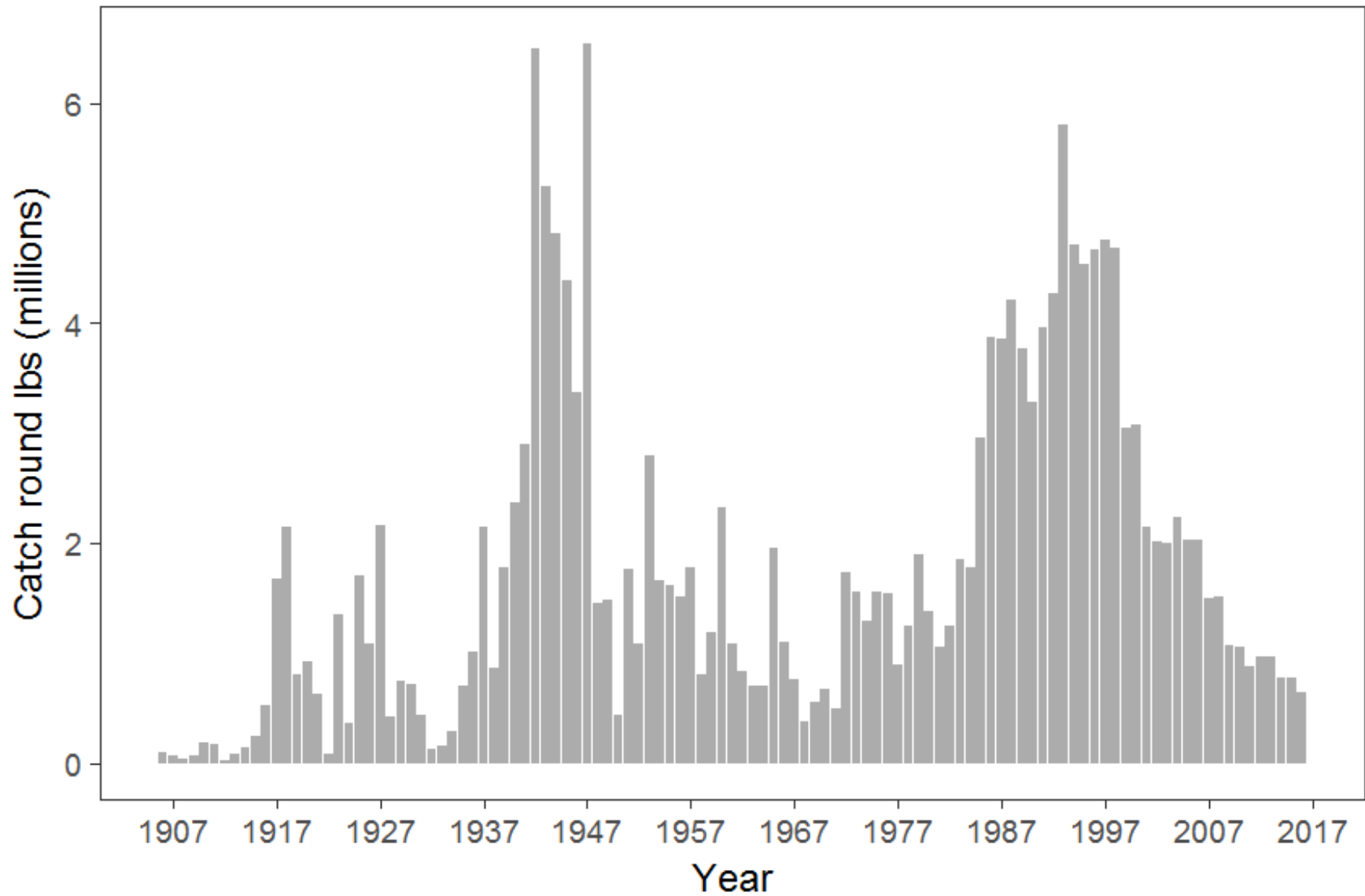
NSEI Sablefish Fishery and Survey Data Review

Ben Williams
ben.williams@alaska.gov

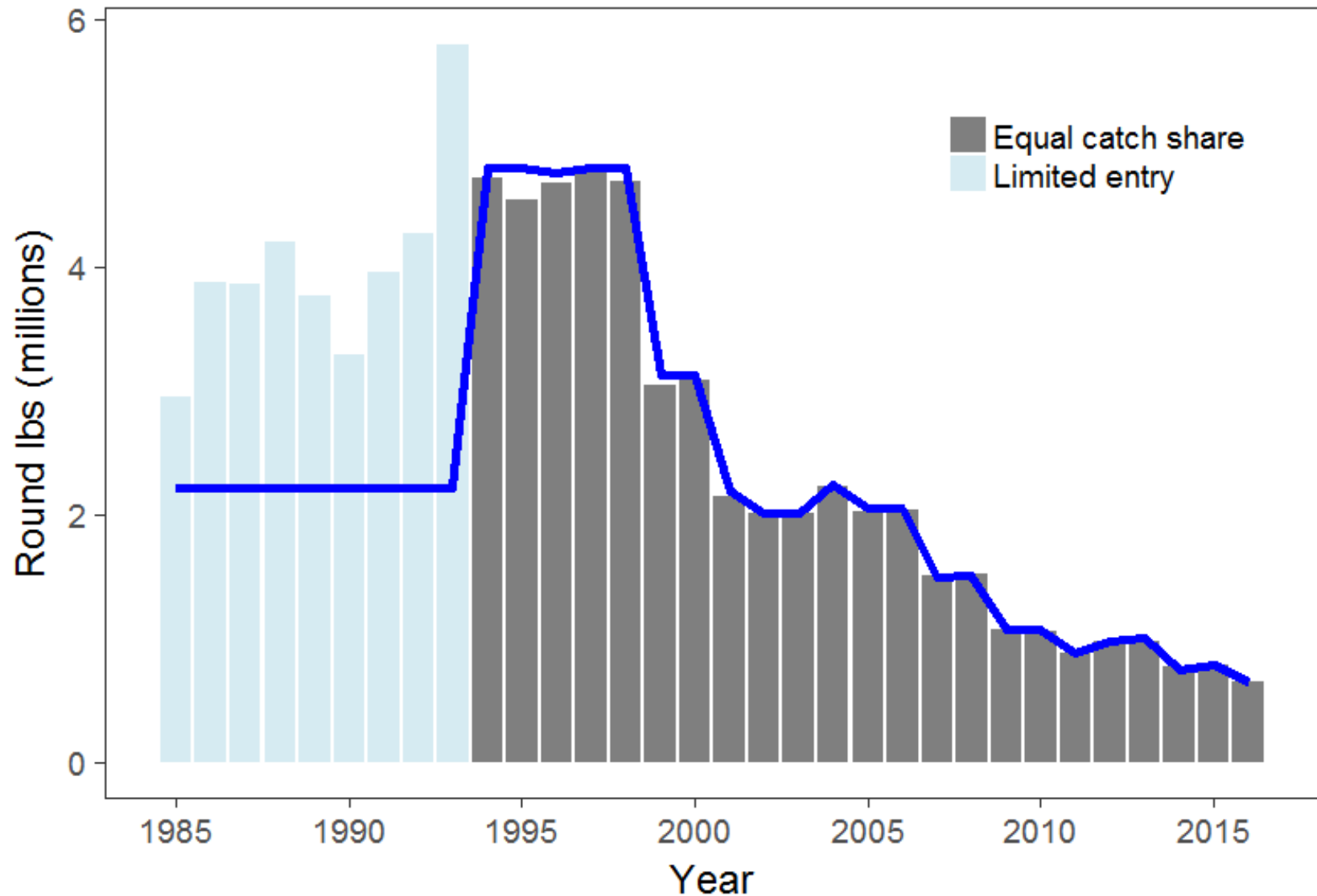
Sablefish Industry Meeting
2017-3-3



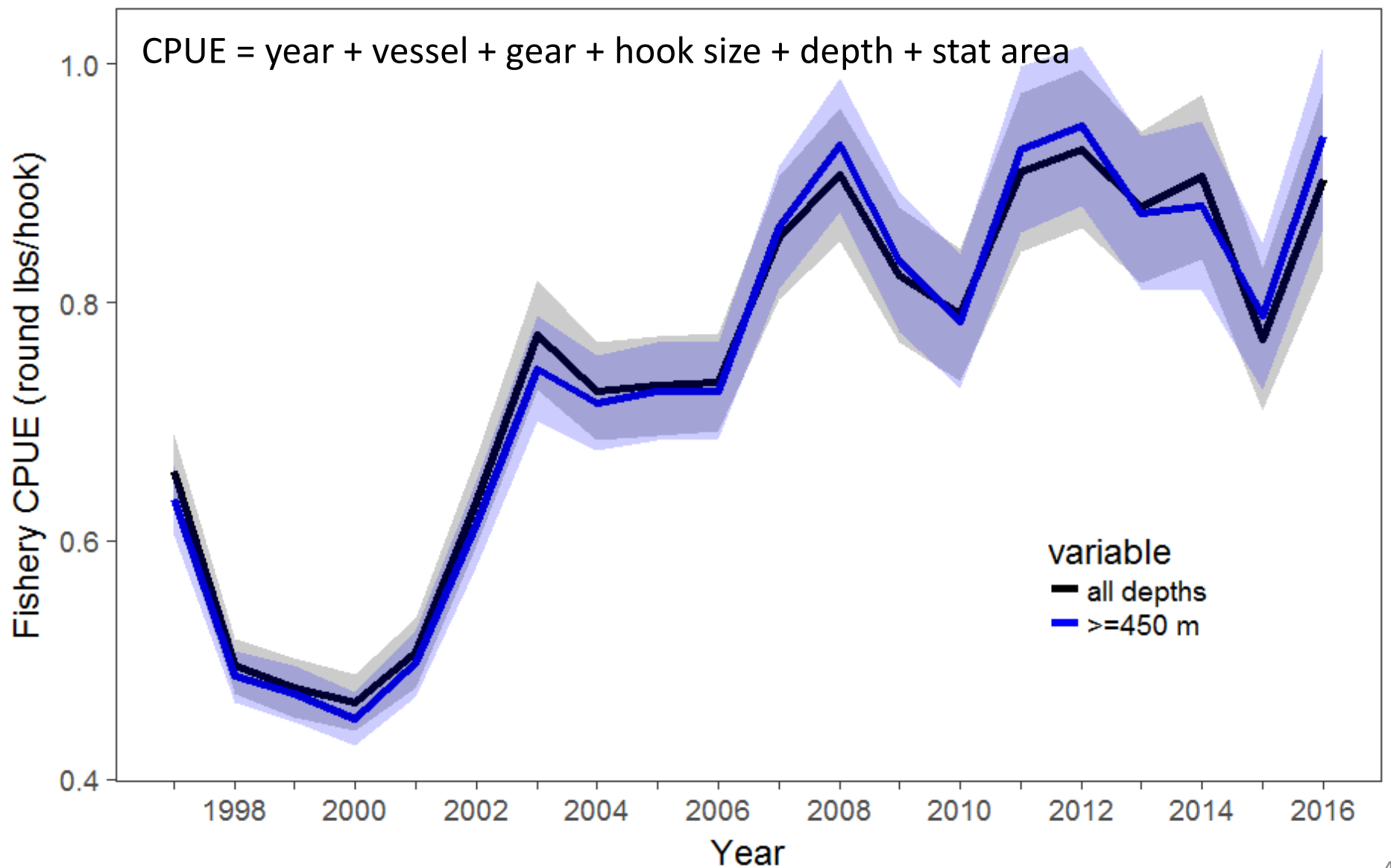
Historic context



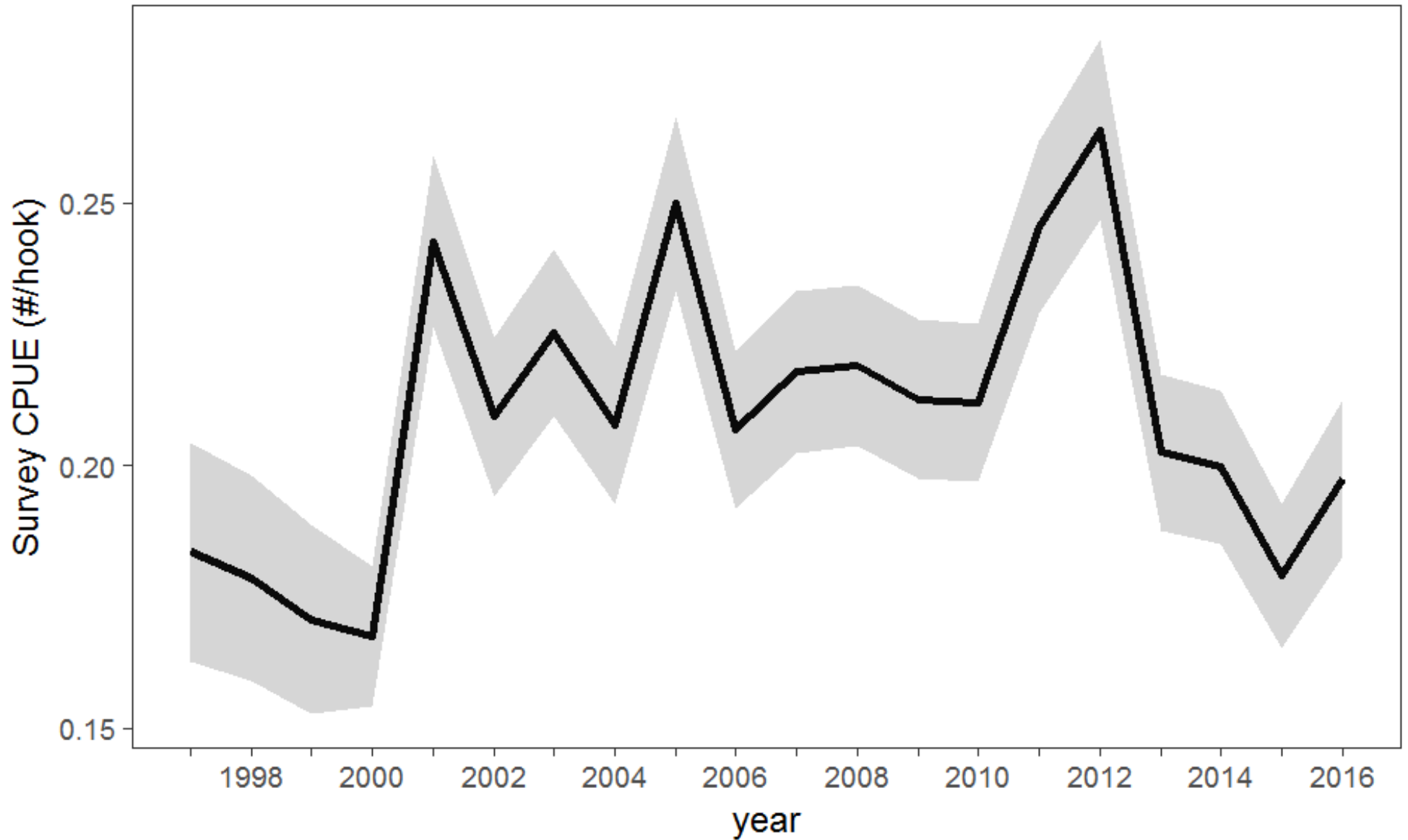
Historic context



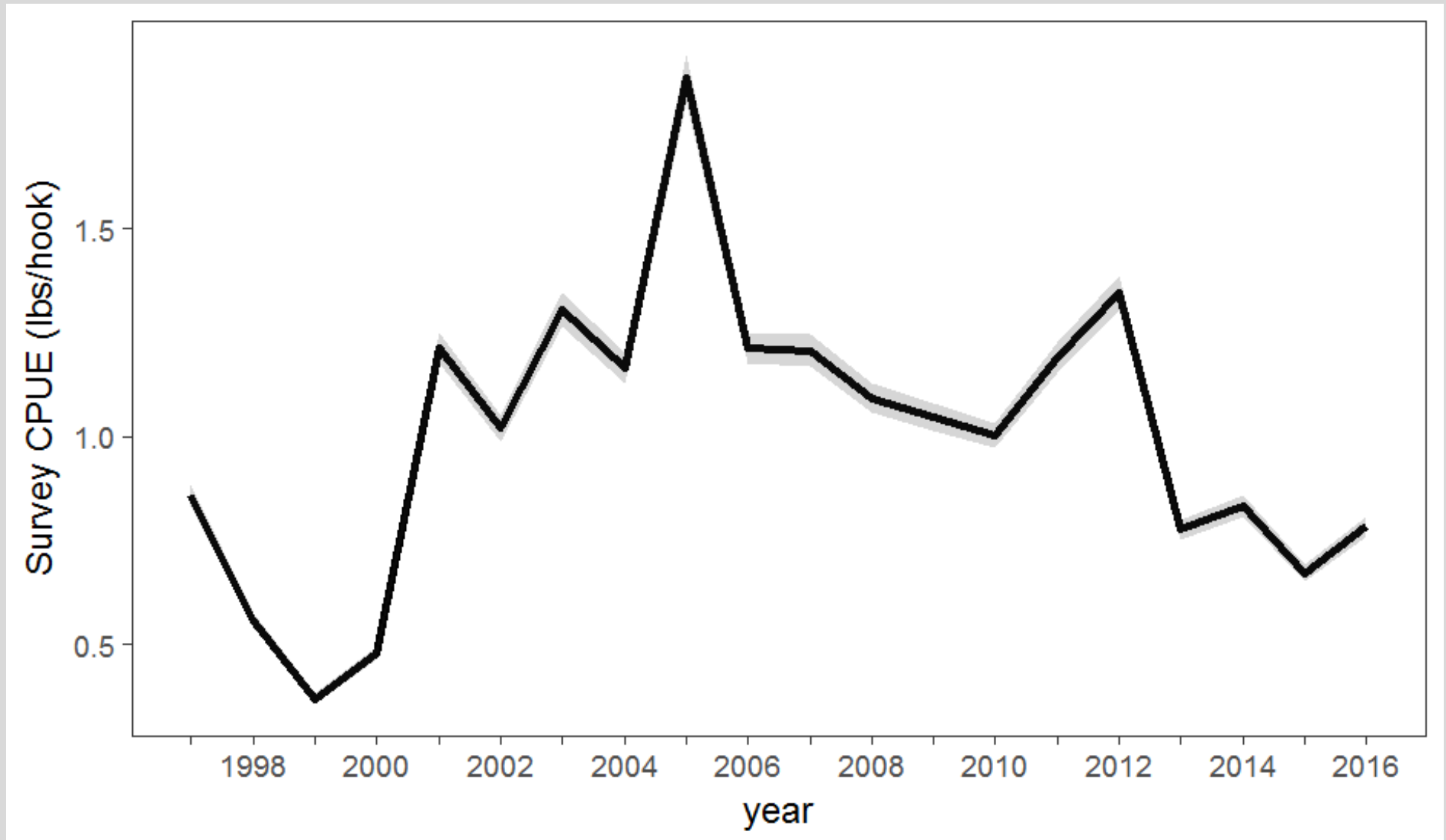
Fishery performance



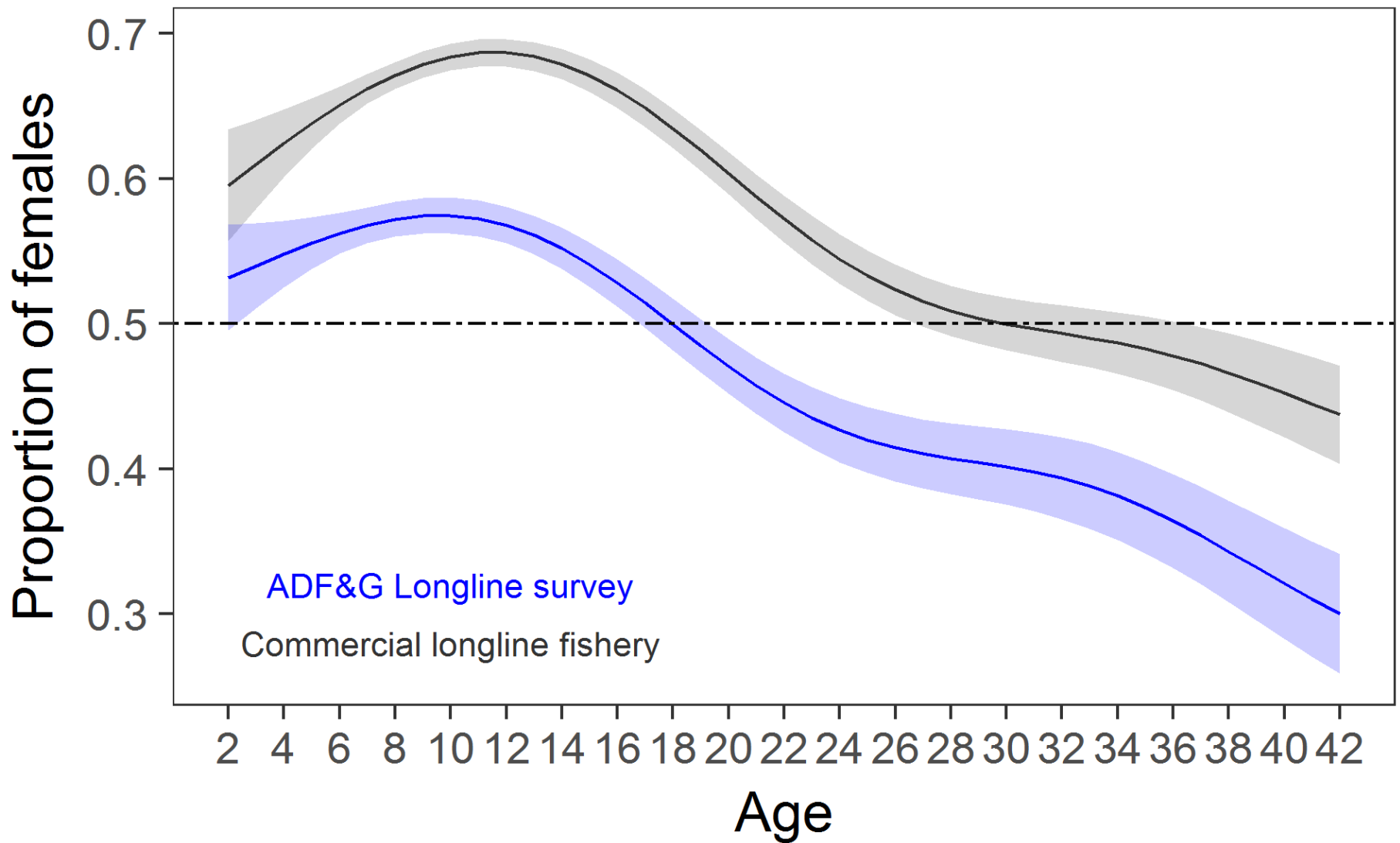
Survey performance (numbers)



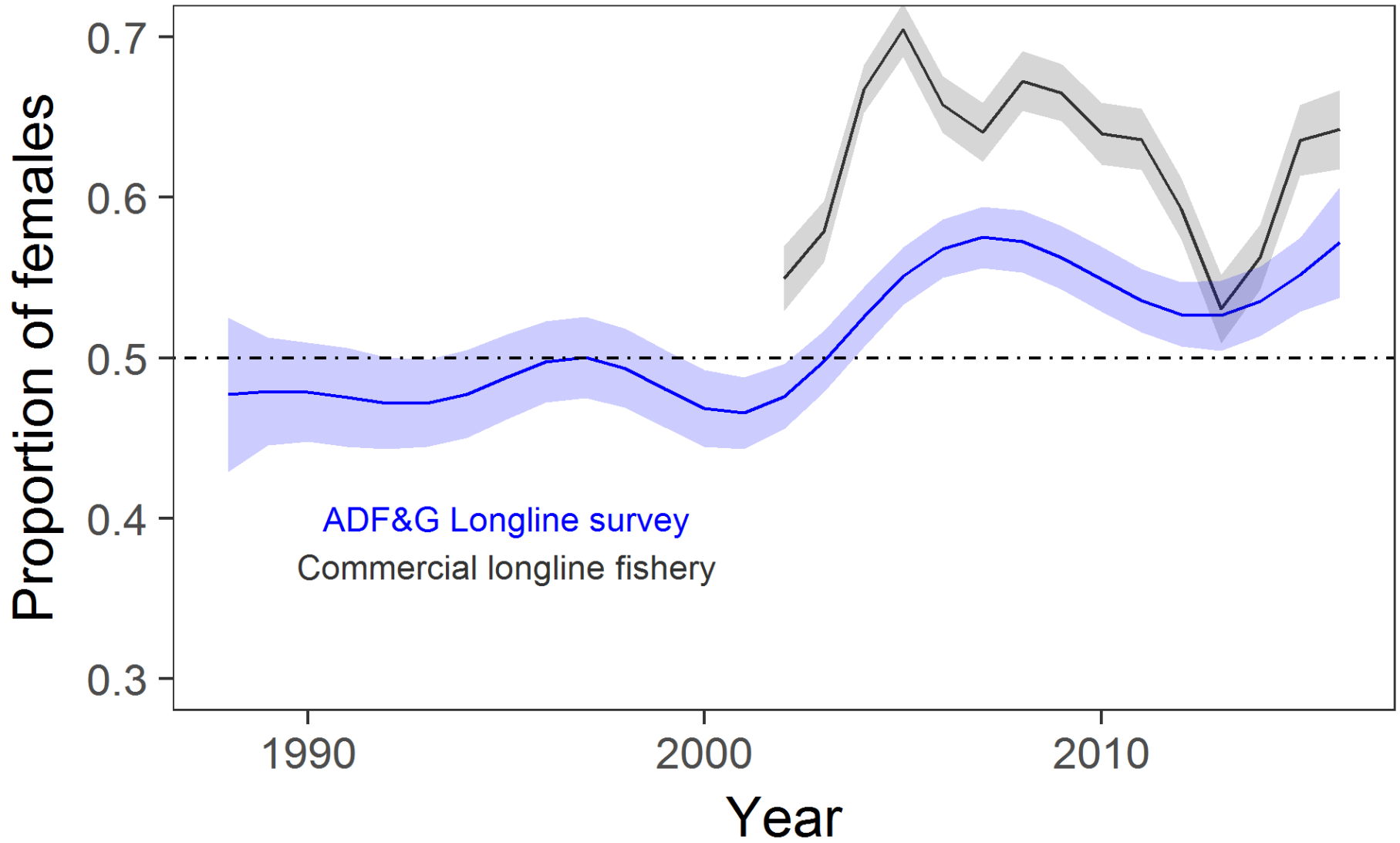
Survey performance (mean weight)



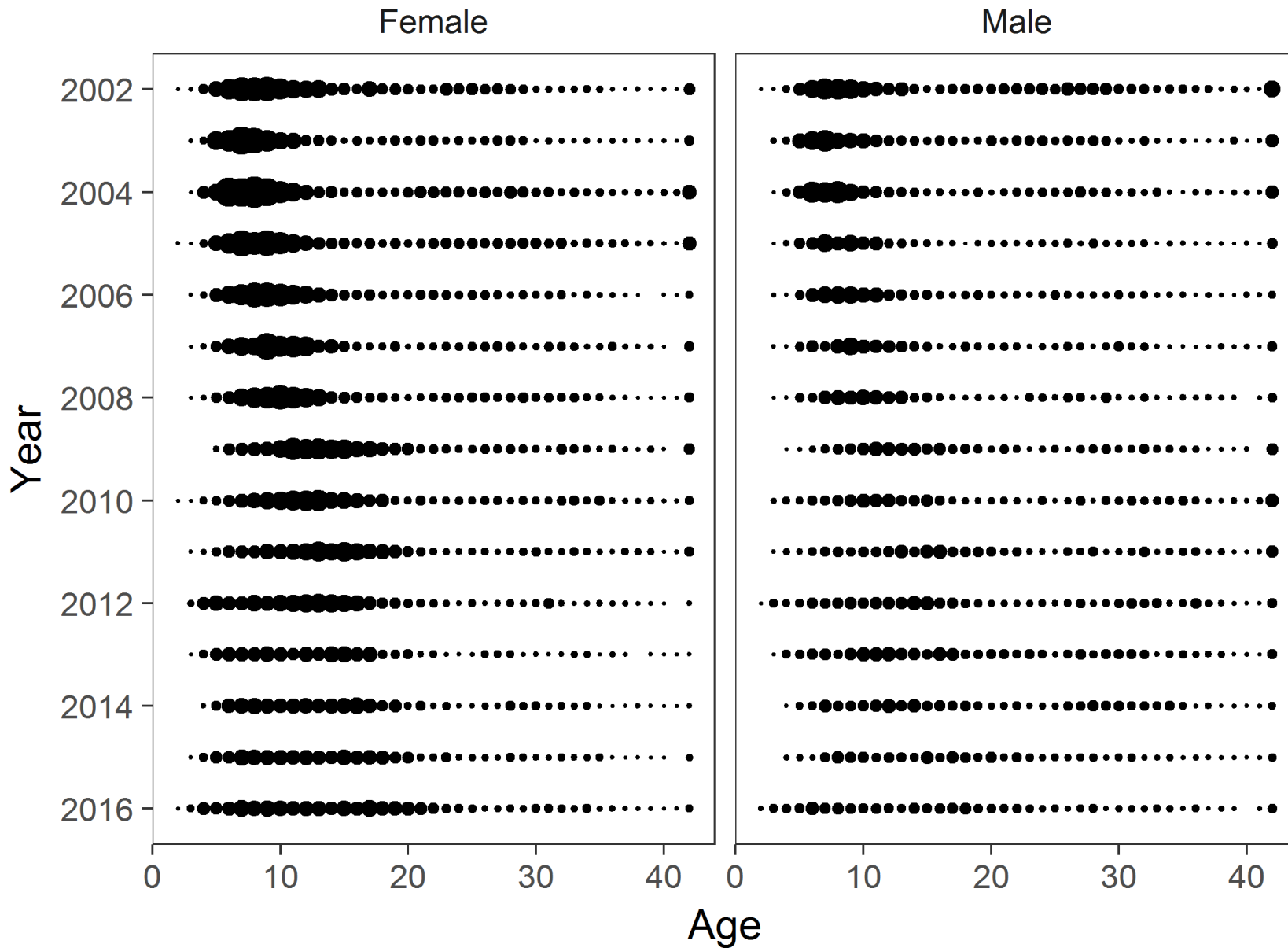
Sex ratios



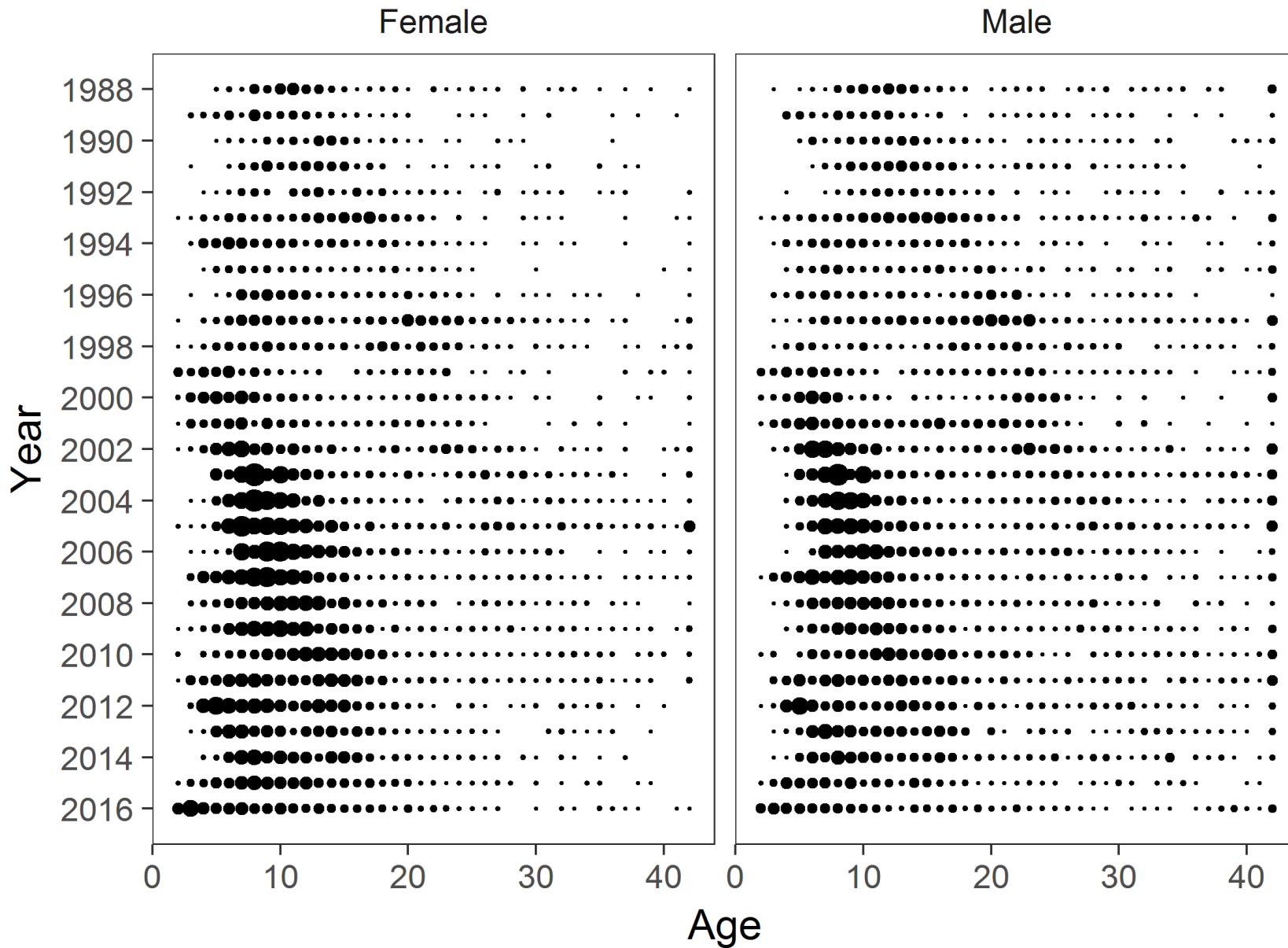
Sex ratios



Age structure (fishery)

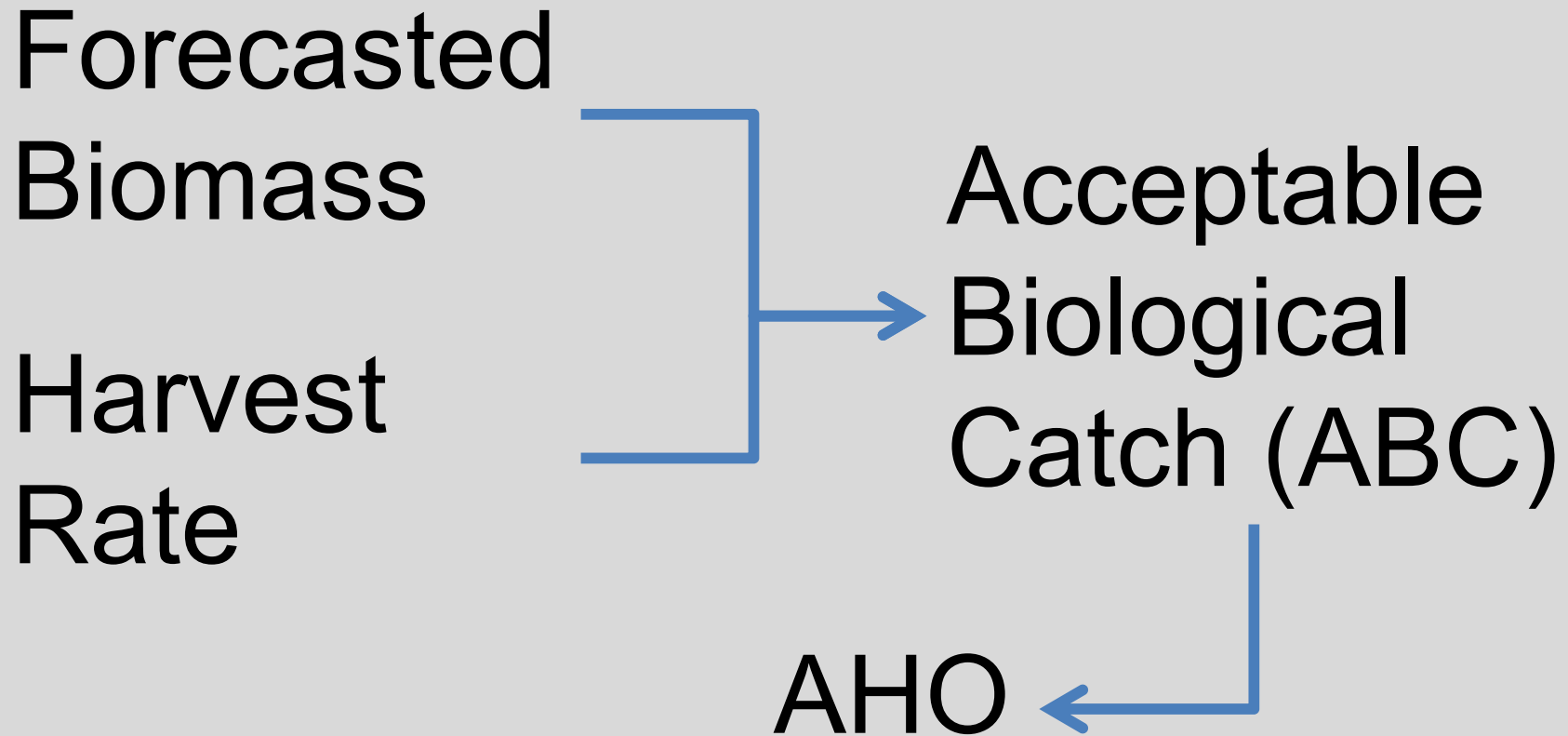


Age structure (survey)



Current Methods

Abundance-based management



Abundance-based management

- Mark-recapture abundance estimate
 - Tagged via pot survey
 - Recaptured in LL survey and fishery

Abundance-based management

- Mark-recapture abundance estimate
- Sex/age composition from commercial fishery

Abundance-based management

- Mark-recapture abundance estimate
- Sex/age composition from commercial fishery
- Scale by age-specific selectivity
- Calculate spawning biomass using $M=0.10$, previous F_{50} , maturity, and weight at age.

Abundance-based management

- Mark-recapture abundance estimate
- Age/sex composition from commercial fishery
- Scale by age-specific selectivity
- Calculate spawning biomass using $M=0.10$, previous F_{50} , maturity, and weight at age.
- Determine new quota based upon target F



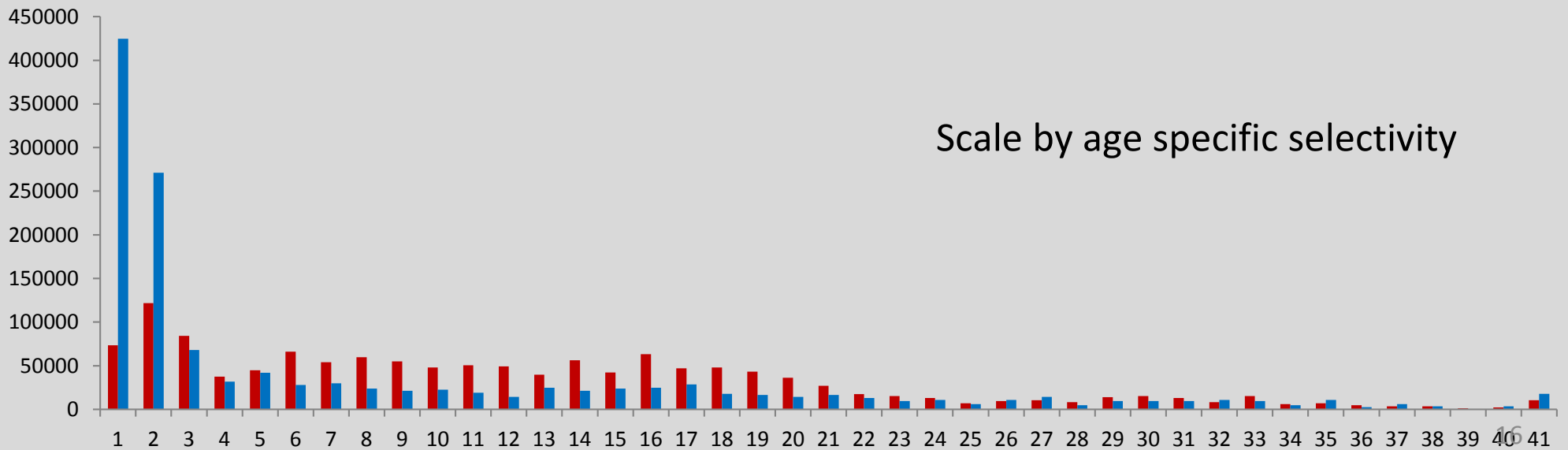
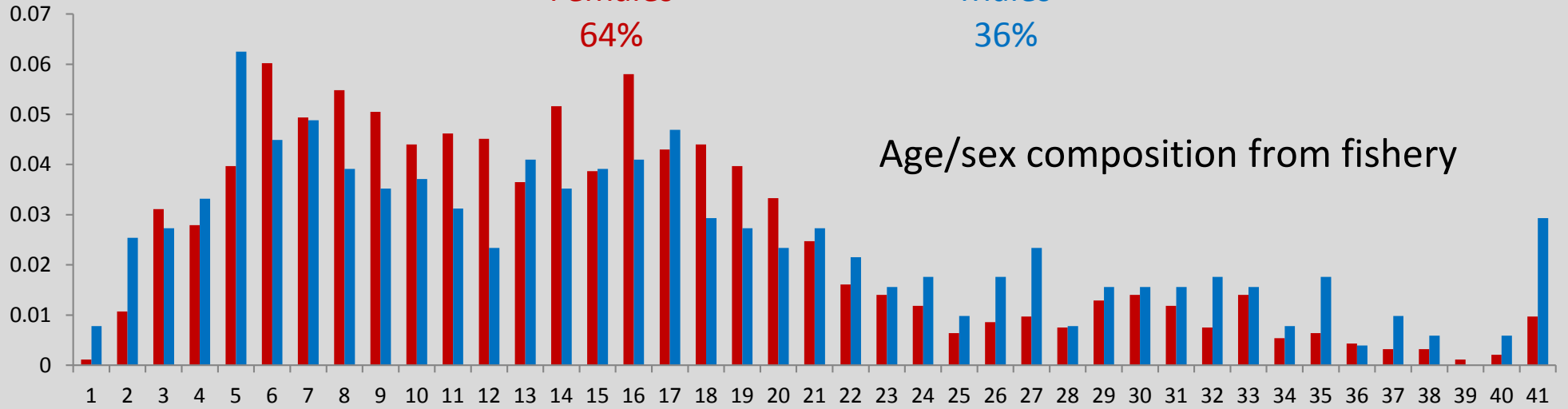
Chatham Strait sablefish: Current Methods



Mark-Recapture estimate

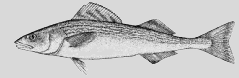
Females
64%

Males
36%

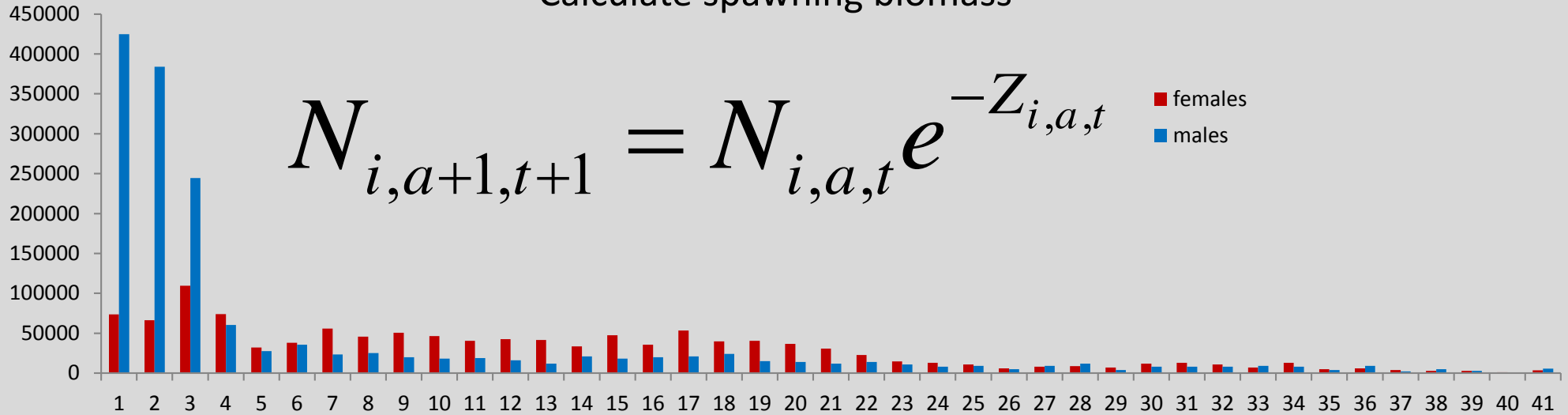




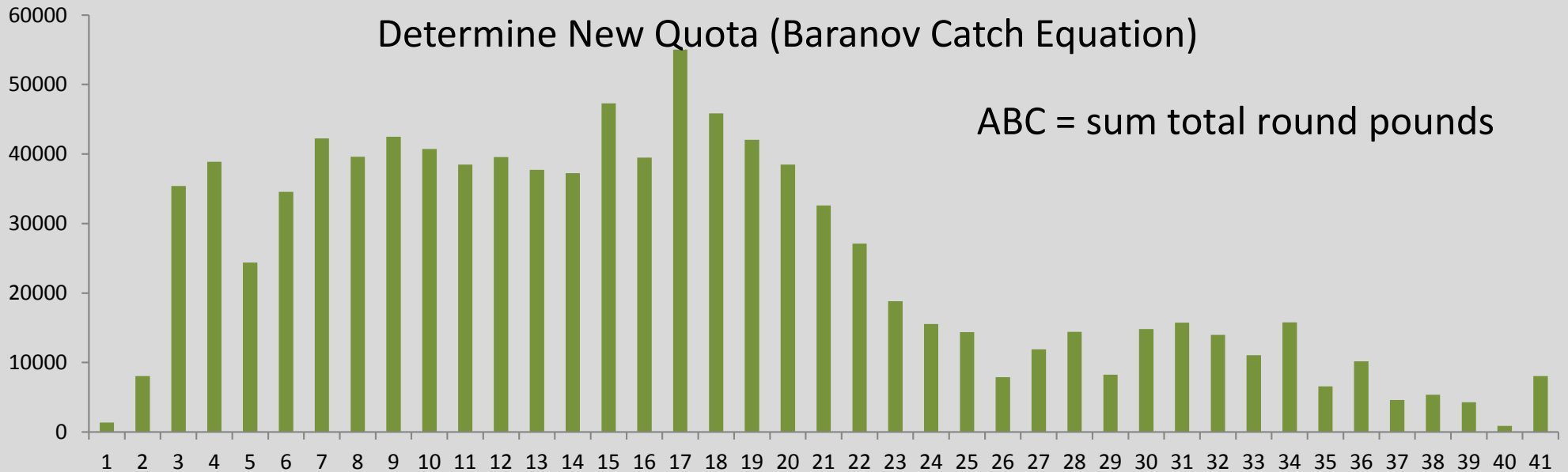
Chatham Strait sablefish: Current Methods



Calculate spawning biomass



Determine New Quota (Baranov Catch Equation)



2017 Preliminary forecast exploited biomass

13.5 million round pounds

ABC ~ 850,00 lbs

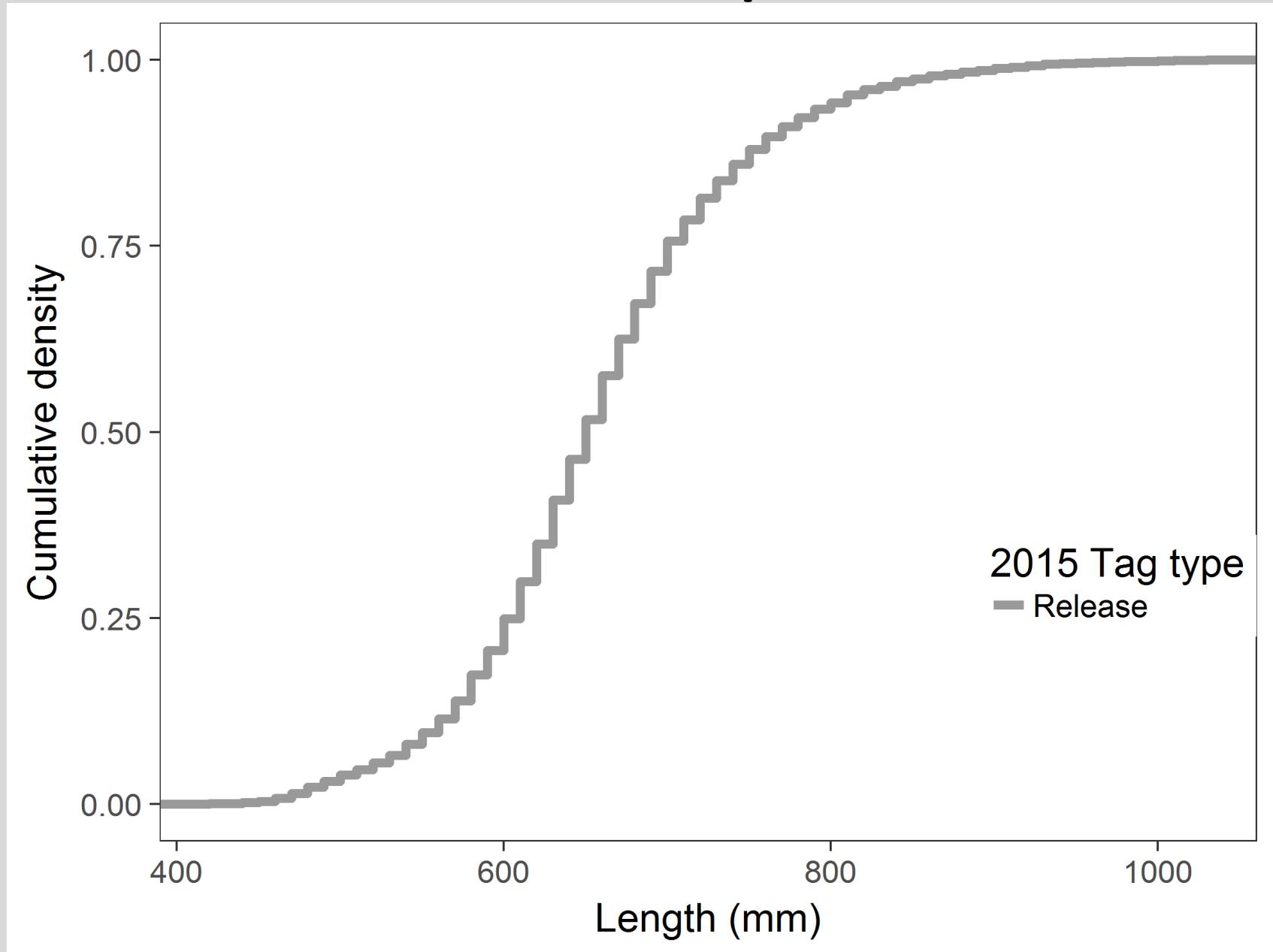
~5 % increase from 2016

Update: Age-structured assessment

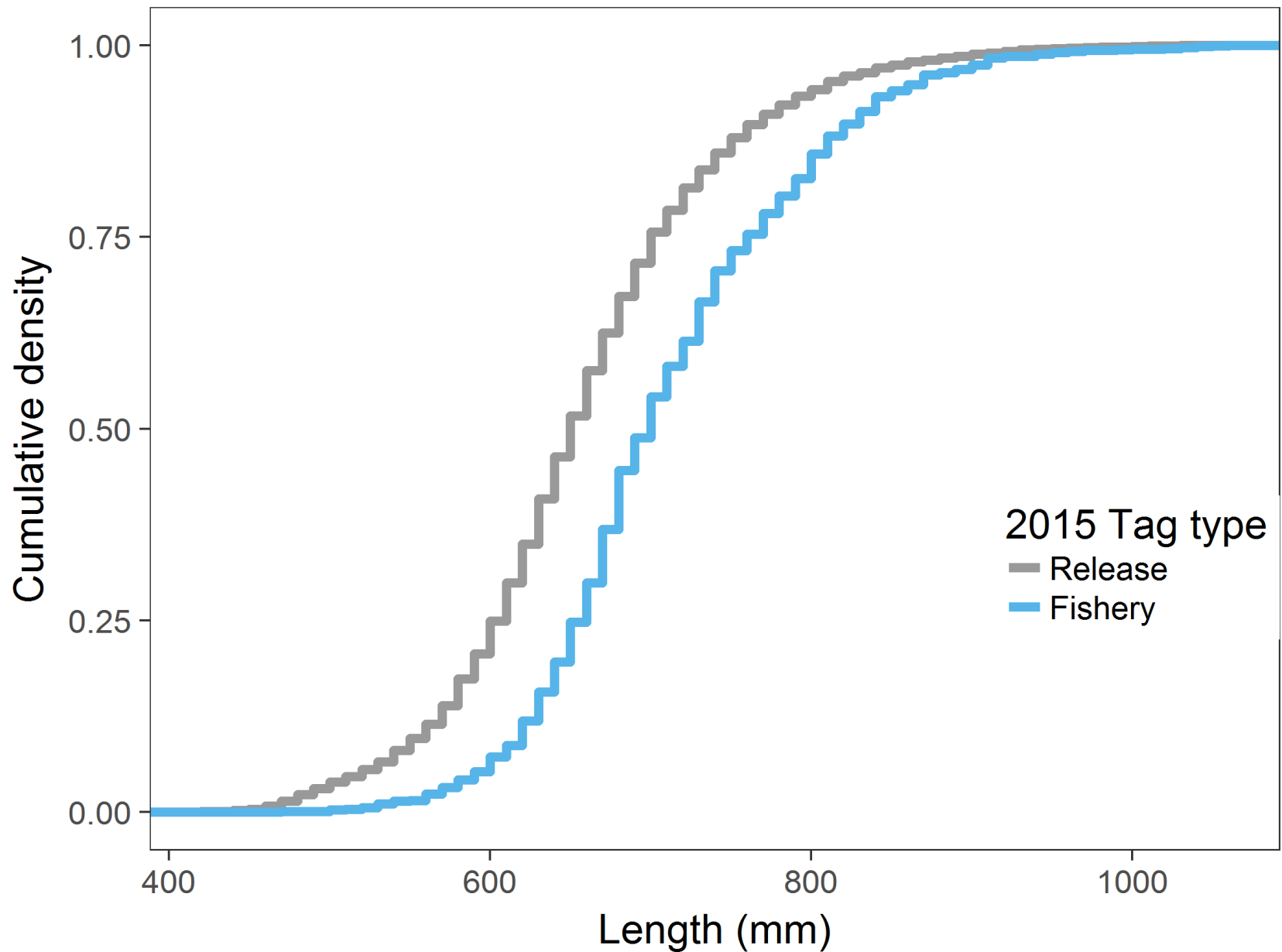
- New biometrician
- Mark-recapture survey 2017
- Present current and ASA results for 2018
forecast

Questions

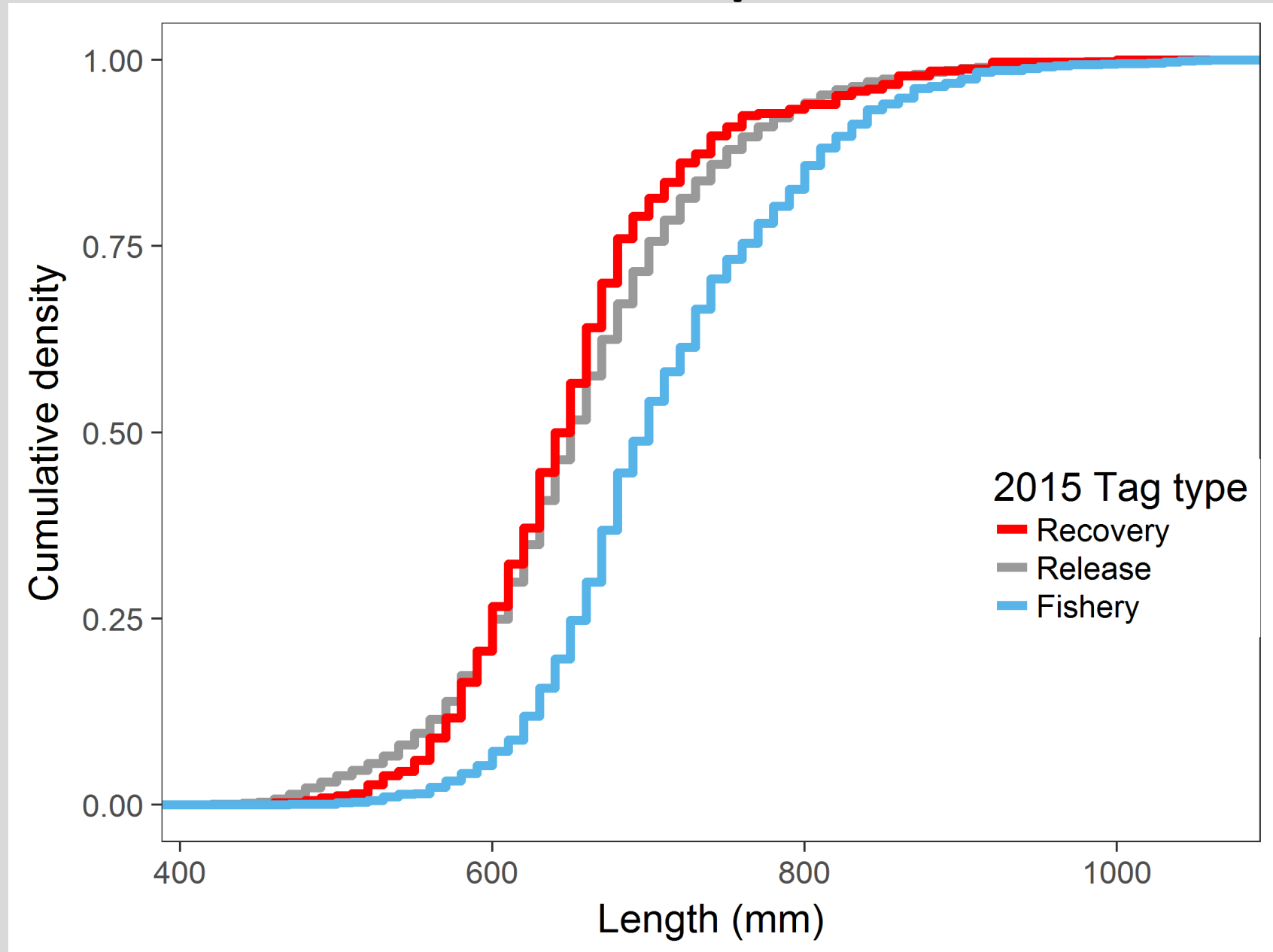
Mark-recapture



Mark-recapture



Mark-recapture



Mark-recapture

