



2016 Sablefish Industry Meeting



Northern Southeast Inside (NSEI) Sablefish

Kristen Green, ADF&G





Agenda



-
- Introduction – Kristen Green (ADF&G)
 - NSEI fishery and survey data review – Kray Van Kirk (ADF&G)
 - NSEI age structured assessment model– Kray Van Kirk (ADF&G)
 - 2016 Outlook: NSEI sablefish quota/ decrement review – Kristen Green (ADF&G)
 - NSEI future fieldwork/ budget update – Kristen Green (ADF&G)
 - Gulf of Alaska federal sablefish fishery stock status – Dana Hanselman (NOAA)
 - Whale tagging and depredation – Neve Baker (SEASWAP)
 - Seabird Bycatch – Rob Suryan (Oregon State)



ADFG Presentation Overview



-
- History of NSEI fishery and stock assessment
 - Current NSEI stock assessment methodology
 - Stock assessment review (CPUE/mark recapture)
 - 2017: proposing an Age Structured Assessment model
 - Decrement process
 - Future NSEI plans: 2016 and beyond
 - ADF&G Longline/Marking survey future
 - Collaborative research



Stock Assessment History

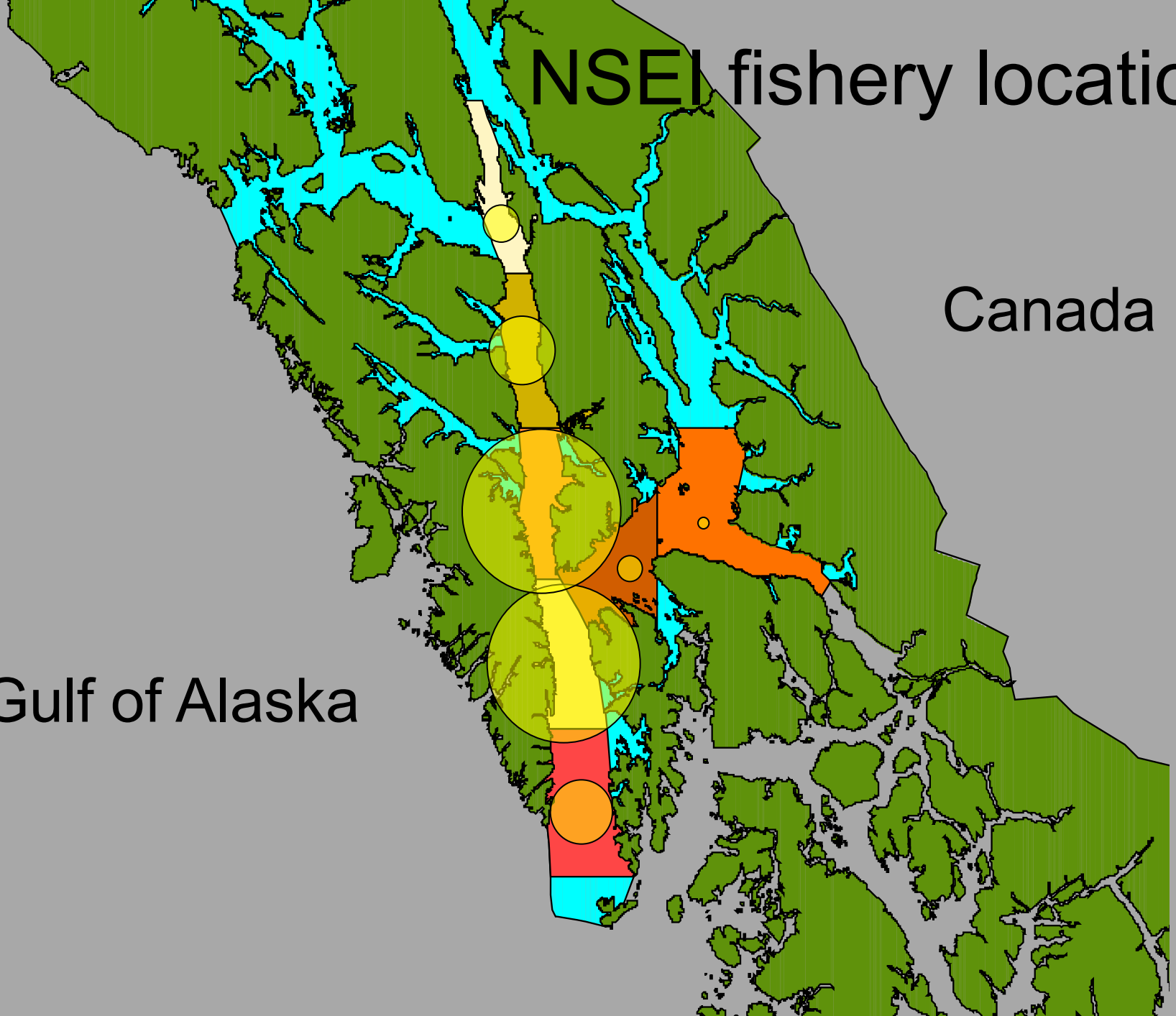


-
- Survey CPUE (1988 to present)
 - Fishery CPUE (1997: logbooks implemented)
 - Mark-recapture study
 - Tagged fish released from longline survey 1997–1999
 - Concern over hook shyness – reduced catch in longline fishery
 - Since 2000, tagged fish have been released with pots;
 - use this to estimate abundance, use fishery/survey data to convert to biomass/calculate harvest rate

NSEI fishery location

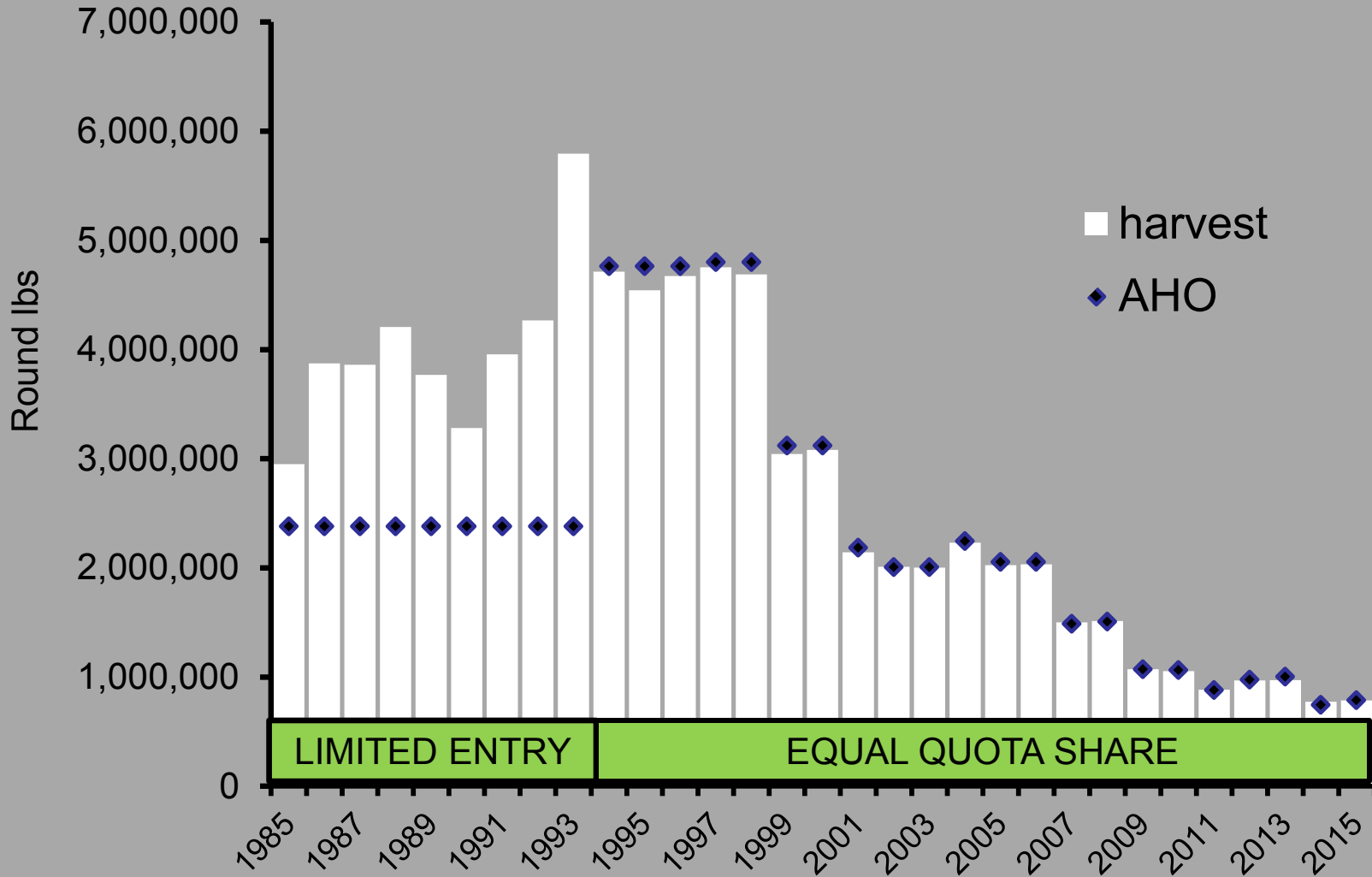
Canada

Gulf of Alaska



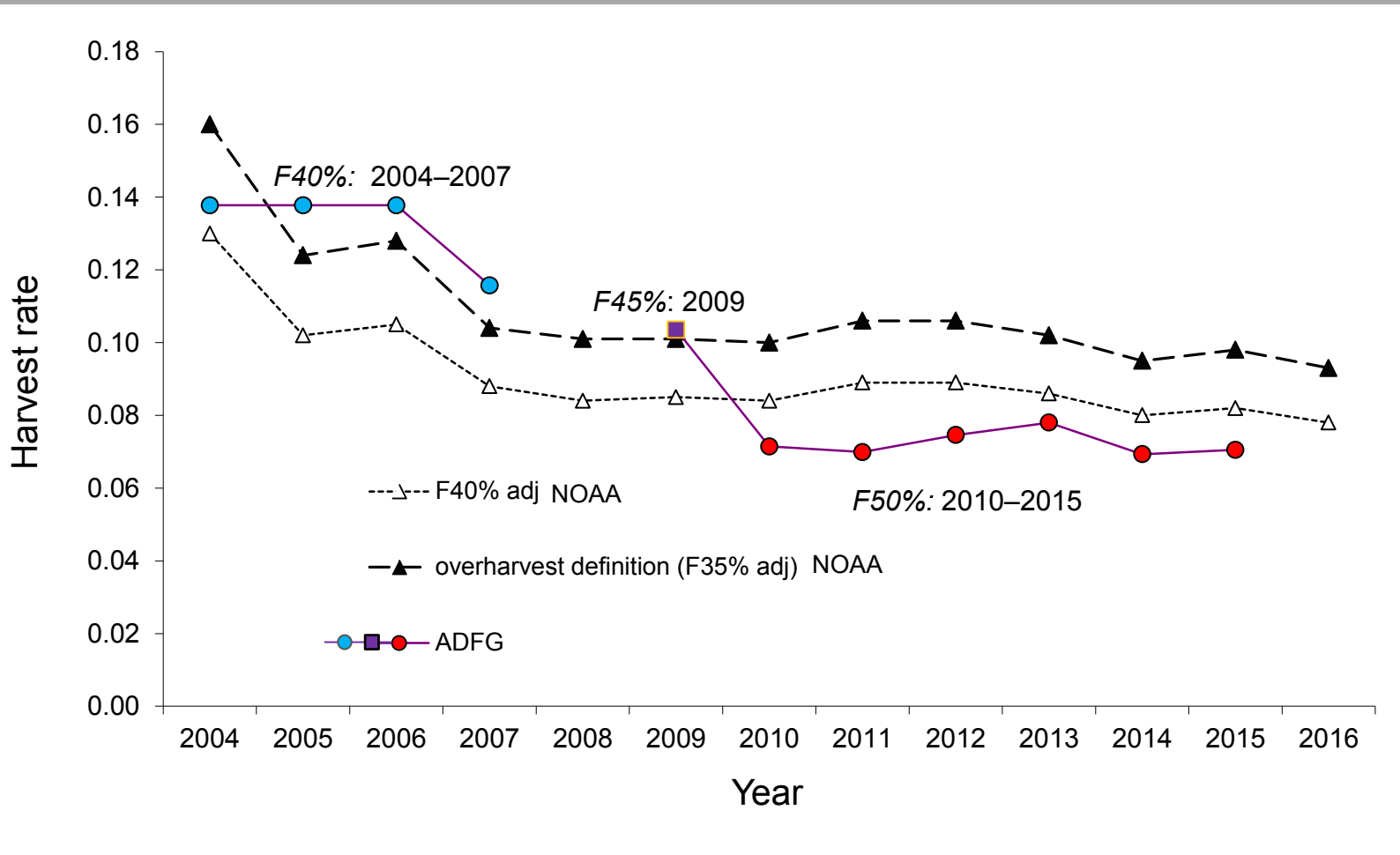


History of the NSEI fishery





NSEI Harvest Rate History

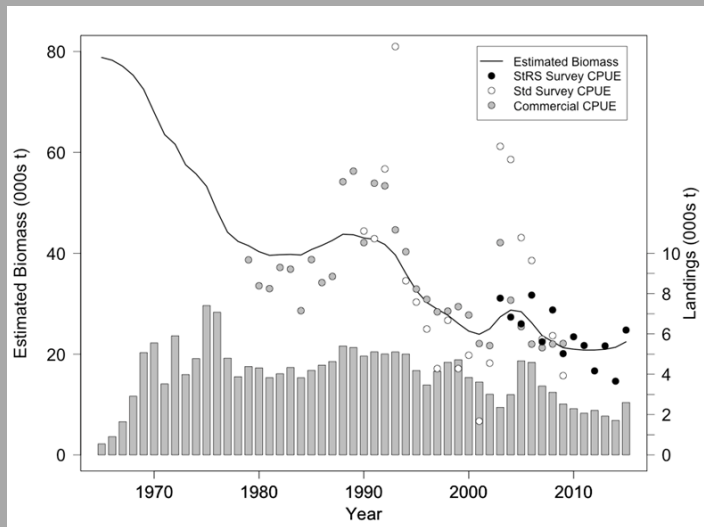




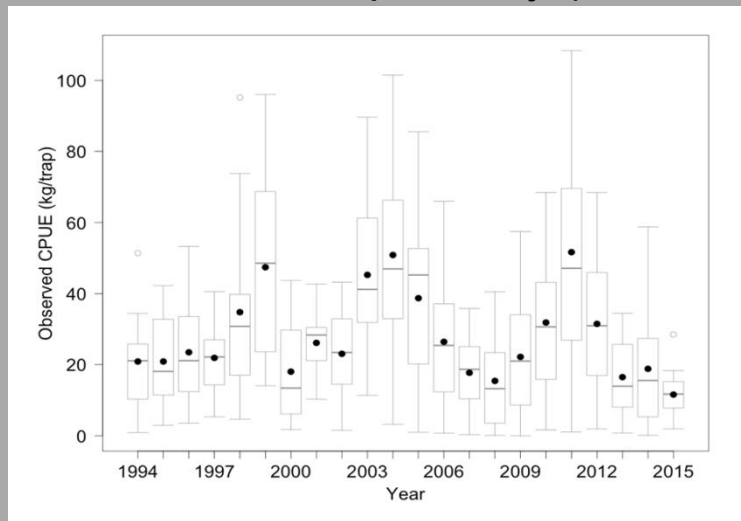
Sablefish Geographic Trends



DFO Canada biomass

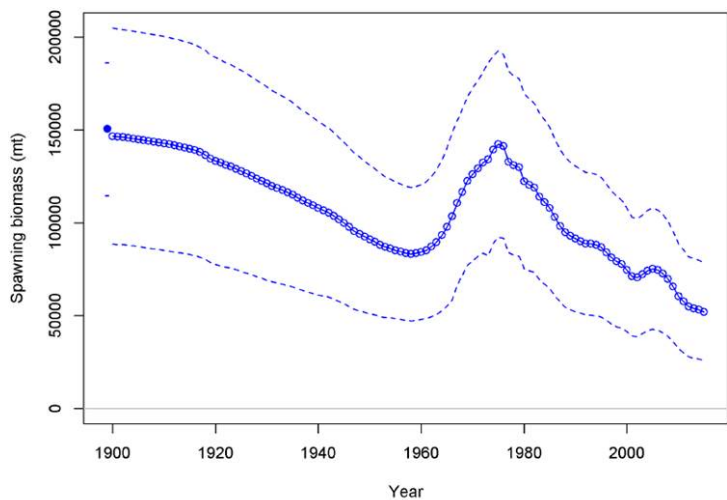


DFO Canada trap survey (inside waters)

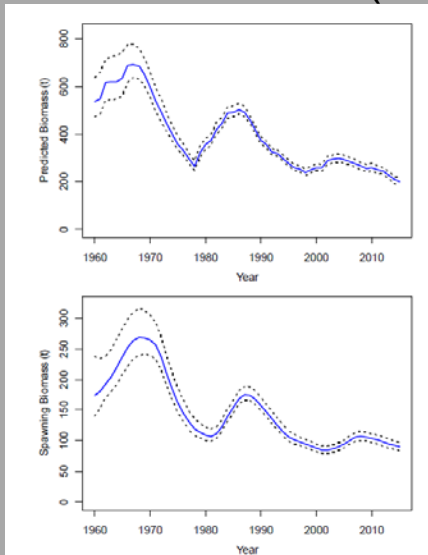


West Coast biomass

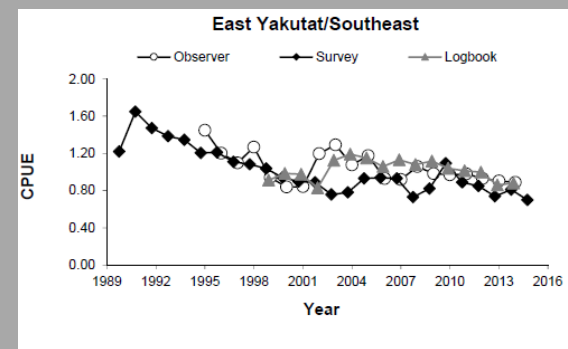
Spawning biomass (mt) with ~95% asymptotic intervals



Alaska biomass (outside waters)



SE Alaska CPUE (outside waters)





Outlook to 2016 AHO



- Decrease in 2015 fishery and survey CPUE
- No signs of recruitment in fishery/survey, (but hopeful for small juveniles in the future!)
- Finalizing analyses for ABC
- *F*50% Harvest rate policy



Juvenile sablefish removed from troll-caught coho stomachs, September 2015



Decrements



.....

The AHO is calculated by making the following decrements from the ABC:

- 1) estimated sablefish bycatch mortality in the commercial halibut fishery;
- 2) ADF&G longline survey removals;
- 3) recreational charter harvest;
- 4) 2014 subsistence and personal use harvest,
- 5) sablefish discard mortality in non-halibut fisheries.



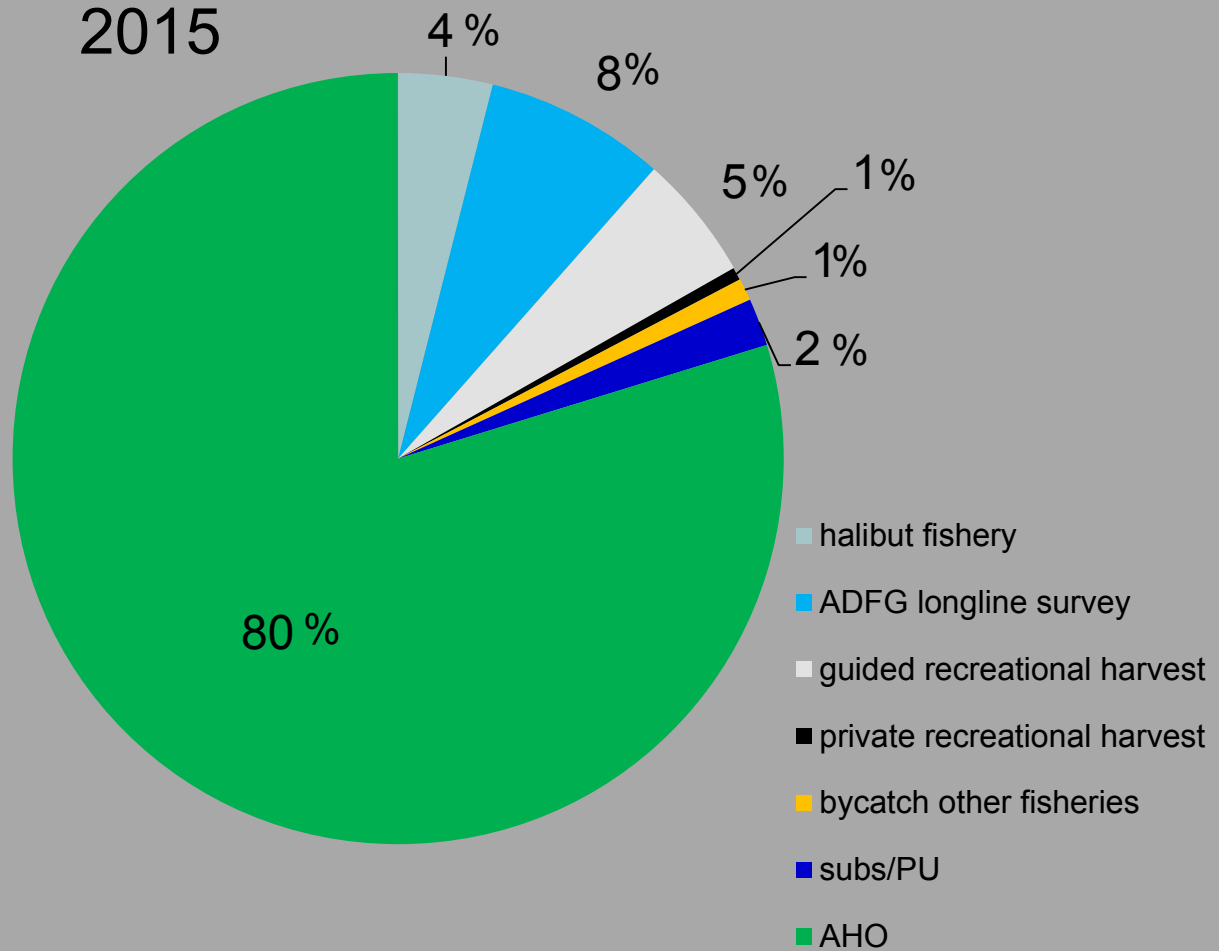
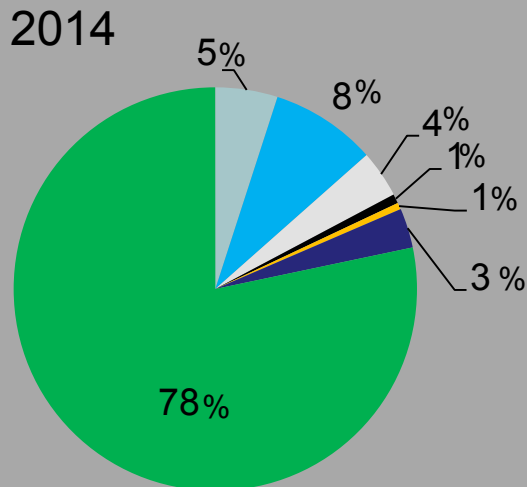
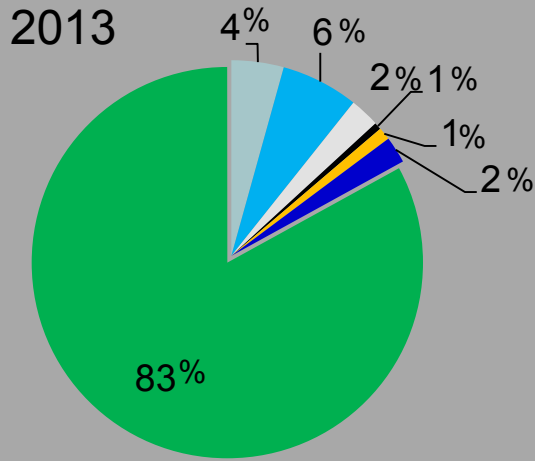
Decrement amounts for 2013–2015



<u>Year</u>	2013	2014	2015
<u>Decrement type</u>			
Bycatch mortality in halibut fishery	52,114	47,514	38,963
ADF&G longline survey removals (excluding catch retained by permit holders)	77,261	80,814	74,689
Guided recreational harvest	29,601	35,944	51,910
Private recreational harvest (unguided)	7,076	7,076	5,212
Bycatch mortality in non-halibut fisheries	12,533	5,081	9,218
Subsistence and personal use	26,535	30,335	19,741
Total Decrements	205,120	206,764	199,733
AHO	1,002,162	745,774	786,748
Permit Holders	78	78	78
EQS	12,848	9,561	10,087



NSEI AHO/Decrement as % of ABC





ADF&G NSEI Tagging Survey



- Conducted successful surveys in 2012, 2013, 2015 (2012 first yr on ADF&G vessel)
- Plan to survey every other year
- Tag between 6,000–8,000 fish each year throughout NSEI
- 2015 Survey Summary
 - 6,862 sablefish tagged
 - 210–445 fm depth (avg=342 fm)
 - 17–41” sablefish length (avg=26”)





ADF&G NSEI Longline Survey



- Continue annual LL surveys (cost recovery)
- 3 vessels, up to 9 permit holders can participate
 - Permit holders need to be present while PQS is harvested.
- Goal is to continue to **REDUCE** survey removal impact, benefit fleet
- Three vessels under contract
 - New contract bid next year (5 year)





Collaborative research: ADF&G funded graduate study: Movement Patterns Juvenile Sablefish (Rhea Ehresmann-ADFG)



Goals: examine movements and improve knowledge of early life history of sablefish

Fieldwork: 2015 & 2016: total of 40 age-1 fish will be tagged





Budgets



-
- Legislative cuts will likely continue
 - General fund sablefish Increment cut
 - Funding for longline surveys (cost recovery)
 - Funding for marking survey

Questions

